

Commander Series

Lifting **7,000 LB** Capacity

The **Commander 7000™** and **Commander 7000X™** are the most popular in the Danmar line. The reason is quite simple: its versatility. It is the perfect solution for parking and storing vehicles in both the shop and at home. No matter what job, the Commander series lifts are the premiere lift of choice.

The Commander is equipped with multiple height locking positions for parking convenience. A pull-lever pneumatic safety lock control releases all four independent safety locks simultaneously, ensuring even weight distribution while lowering. Each lift is covered with a durable powder coat finish that protects your lift- giving it a high quality, durable finish that can withstand harsh weather and chemicals.

The Commander 7000X is the wider version of the Commander 7000.

What sets the Commander Apart?

- Power Unit Made in USA
- Visible Locking system for added security
- Runways constructed of solid plate steel
- Runways coated with the best nonskid textured surface available



Commander 7000X



Commander 7000



Commander 7000/7000X meets the standards as prescribed by ANSI/ALI ALCTV-2006

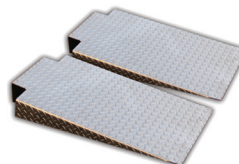


MOTORCYCLE VISE

This optional motor-cycle vise creates the perfect motorcycle storage solution. Adjustable screw clamp adapts to narrow or wide tire sizes. A built-in hinge allows for quick storage.

ALUMINUM RAMPS

These low-profile lightweight aluminum ramps feature quick-mount brackets to make ramp removal and installation a cinch. Feature an attractive diamond-plate finish that provides a non-slip surface. 16 lbs. each.



FEATURES

- Simple Controls for Easy Operation
- Spring loaded safety locks on each column
- Self-Lubricating UHMW polyethylene internal slide blocks.
- Single safety lock release handle
- Single hydraulic cylinder underneath runway
- Reliable electric/hydraulic power system
- Detachable drive-up ramps
- Free standing design
- Self-Lubricating bearings and cable sleeves
- Runways include rail-kit for optional accessories

Four-Post Models

OPTIONAL ACCESSORIES



DRIP TRAYS

These affordable, impact-resistant polypropylene drip trays are sold in packs of three. Each tray comes with 56 articulated catches and gutters to restrain fluid within individual compartments.



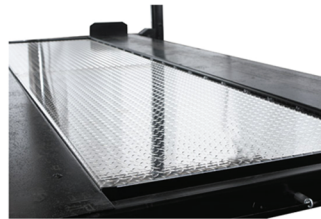
JACK PLATFORM

This optional 3,500-lb. capacity sliding jack platform is perfect for elevating your vehicle off the runways for easy brake and wheel service capability. The easy-slide design allows the jack platform to be positioned anywhere under the vehicle. Bottle jacks not included.



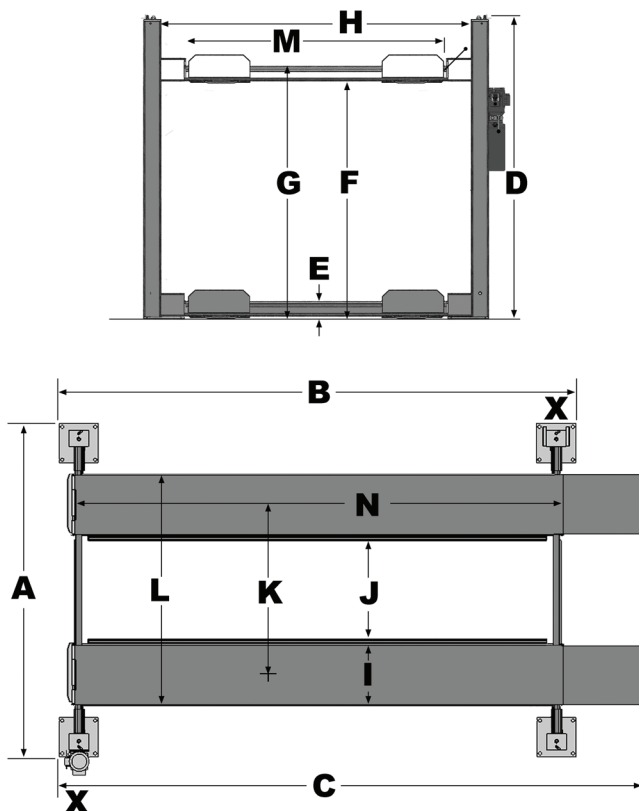
CASTER KIT

Make your Danmar Commander lifts mobile with four-post lift caster kit. These sturdy built steel units with 6 in. polyurethane casters allow you to move it, store it, or take it outside; make your Commander more versatile with caster kits from Danmar.



SOLID DECK

This optional two-piece, full-length middle deck platform fits all Commander Series lifts providing additional storage space. Lightweight aluminum construction makes removal and installation easy.



NOTE: Power unit can be located at either X location.

MODEL	Commander 7000	Commander 7000X
Lifting Capacity:	7,000 lbs.	7,000 lbs.
A - Overall Width:	105" / 2667 mm.	117" / 2972 mm.
B - Outside Length:	170-1/2" / 4331 mm.	194-1/2" / 4940 mm.
C - Overall Length:	203-1/2" / 5169 mm.	227-1/2" / 5779 mm.
D - Height of Columns:	82" / 2083 mm.	94" / 2388 mm.
E - Min. Runway Height:	4-1/2" / 114 mm.	4-1/2" / 114 mm.
F - Max. Rise:	68" / 1791 mm.	80" / 2159 mm.
G - Max. Lifting Height:	72-1/2" / 1841 mm.	84-1/2" / 2146.29 mm.
H - Width Between Columns:	92-1/2" / 2350 mm.	103" / 2616 mm.
I - Runway Width:	18-1/2" / 470 mm.	18-1/2" / 470 mm.
J - Width Between Runways:	37-1/2" / 953 mm.	37-1/2" / 953 mm.
K - Runway Centerline:	52-1/4" / 1327.14 mm.	57" / 1447.8 mm.
L - Outside Edge of Runways:	74-1/2" / 1892.3 mm.	74-1/2" / 1892.3 mm.
M - Drive-Thru-Clearance:	68" / 1727.19 mm.	80" / 2032 mm.
N - Length of Runways:	160-1/2" / 4077 mm.	185" / 4699 mm.
Motor:	110 VAC 60Hz. 1Ph	110 VAC 60Hz. 1Ph
Lock Spacing:	Every 4-1/2"	Every 4-1/2"
Time of Full Rise:	45 sec.	45 sec.