



73100

Pneumatic Tire Spreader

Instruction Manual



AME INTERNATIONAL

2324 Circuit Way, Brooksville, Florida USA 34604

Phone: (+1) 352.799.1111 • Toll Free: (+1) 877.755.4AME (4263) • Fax: (+1) 352.799.1112

E-mail: sales@ameintl.net • www.ameintl.net

CAUTION

- ❗ Before using the product, ensure that you carefully read and fully understand the instructions manual and all notes on the product. This is necessary to avoid injury to the operator and damage to the product.

- ❗ Use this product only for spreading tire and repairing the tire protective wrap. Do not use this product for any other purpose. Our company will not be responsible for the problems caused by any wrong operation.

- ❗ Keep the hook and claw of the machine clean during working. Clean excess matter such as grease in order to avoid injury to the operator caused by sliding.

- ❗ Do not use this product if it is visibly worn, distorted or damaged, handle with it according to the local rules and regulations on waste disposal.

In order to avoid injury to the eyes by the sundries during repairing process, always operate this product using appropriate eye protection.

PRODUCT ILLUMINATION

Vertical pneumatic tire spreader is specially designed for fixing and spreading the tires during repairs on cars and small trucks, microbus in order to work for the tire polishing, cleaning and films affixed etc, equipped with work light and tools rack to improve work efficiency, enabling the tire repair work to be more convenient. Manifest personalized design.

TECHNICAL PARAMETER

Be propitious to:

Tire width: 145MM-275MM 5.7" - 10.9"

Tire diameter: 11"-24", 5"-1"

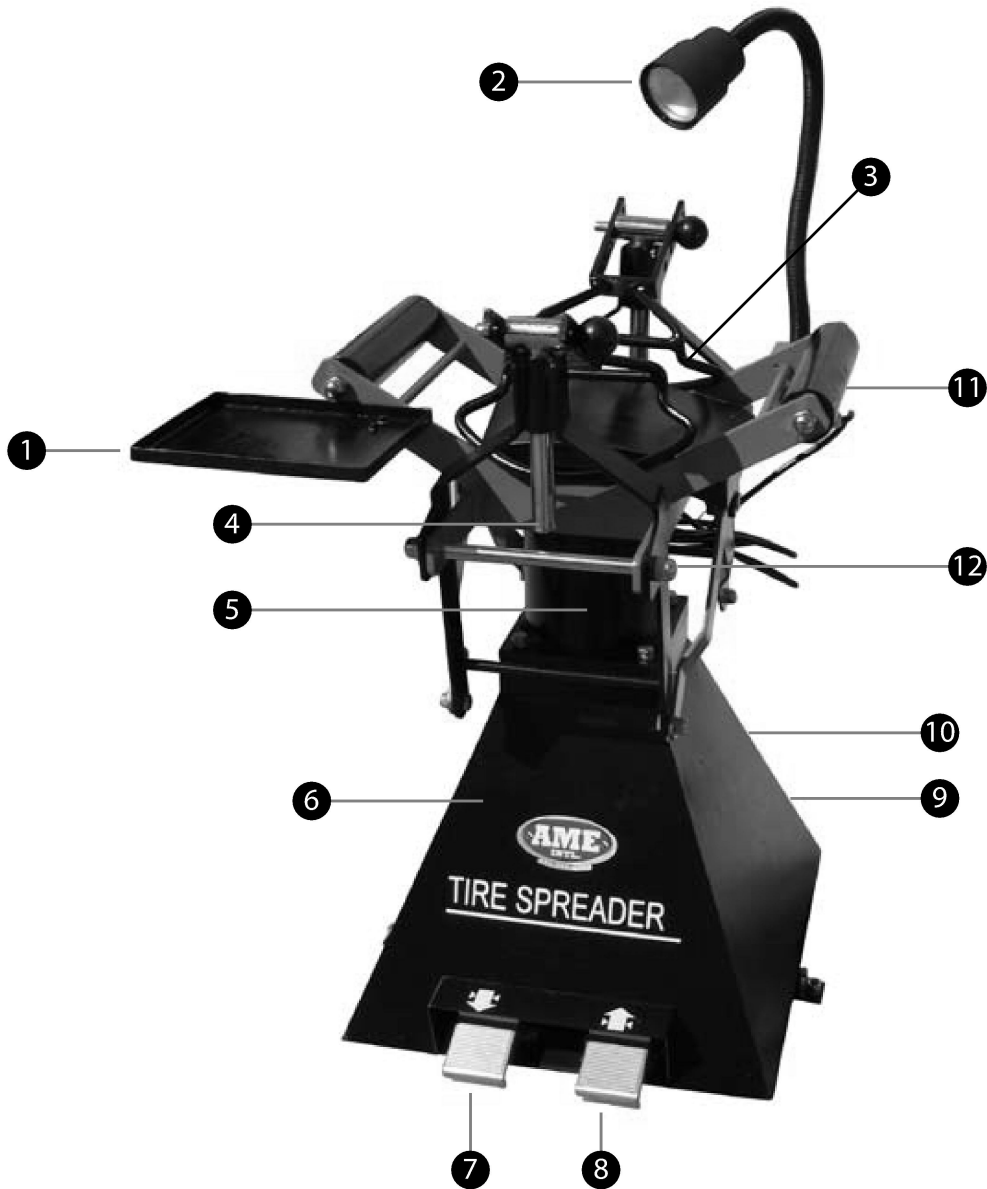
Work voltage:

Input Voltage: 220V 50/60HZ

Work light voltage: 12V

Air pressure: 6-8 KG/CM² 13lbs - 17lbs

PRODUCT CONFIGURATION



(1) Tools Tray

(2) Work Light

(3) Spreading Hook

(4) Orientation Pin

(5) Power

(6) Body

(7) Release Foot Valve

(8) Clamp Foot Valve

(9) Pneumatic Pump Union

(10) Pneumatic Tool Union

(11) Main Body Power

(12) Air Regulator Device

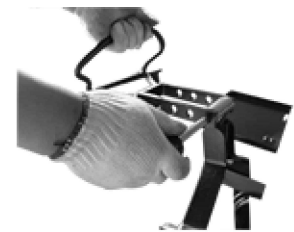
INSTALLATION

- 1 Place this product on solid ground and keep it flat. Securing the unit on the floor is recommended.

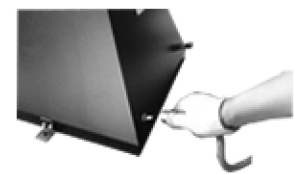
- 2 Attach work tray.



- 3 Install the spreading hook on the machine using orientation pin like the picture illustrates.



- 4 Attach a 1/4 NPT quick coupler nipple (not provided) into the fitting located on the treadle valve assembly. Use 1/4 inch air nose with 100 p.s.i. minimum.



OPERATION

- 1 Before starting the machine, check carefully whether the fasteners on the machine are secured.

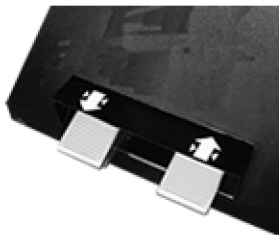
- 2 Fix the tire on the tire spreader with claw by hand.



- 3 Adjust the spreading claw to the appropriate height. Place the spreading hook to the link pin of the hanging device. Adjust the spreading hook, move the link pin and spreading hook up and down in order to insert into one of the adjusting holes.



- 4 Pedal the clamp foot valve, spread the tire to be the required width.

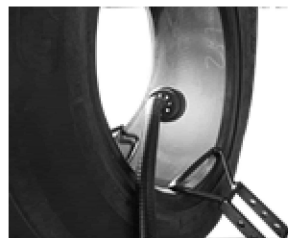


During the process of spreading if the tire separates from the machine then the spreading hook is too high. Reduce its height to the normal position.

- 5 Tires need to be rotated to a new location, use the release foot valve to release air pressure till the spreading hook loosens, then put the tire on the machine rotary to find out a suitable location. Then repeat.



- 6 The work light equipped with the machine also needs to be adjusted to the most suitable location for full illumination.



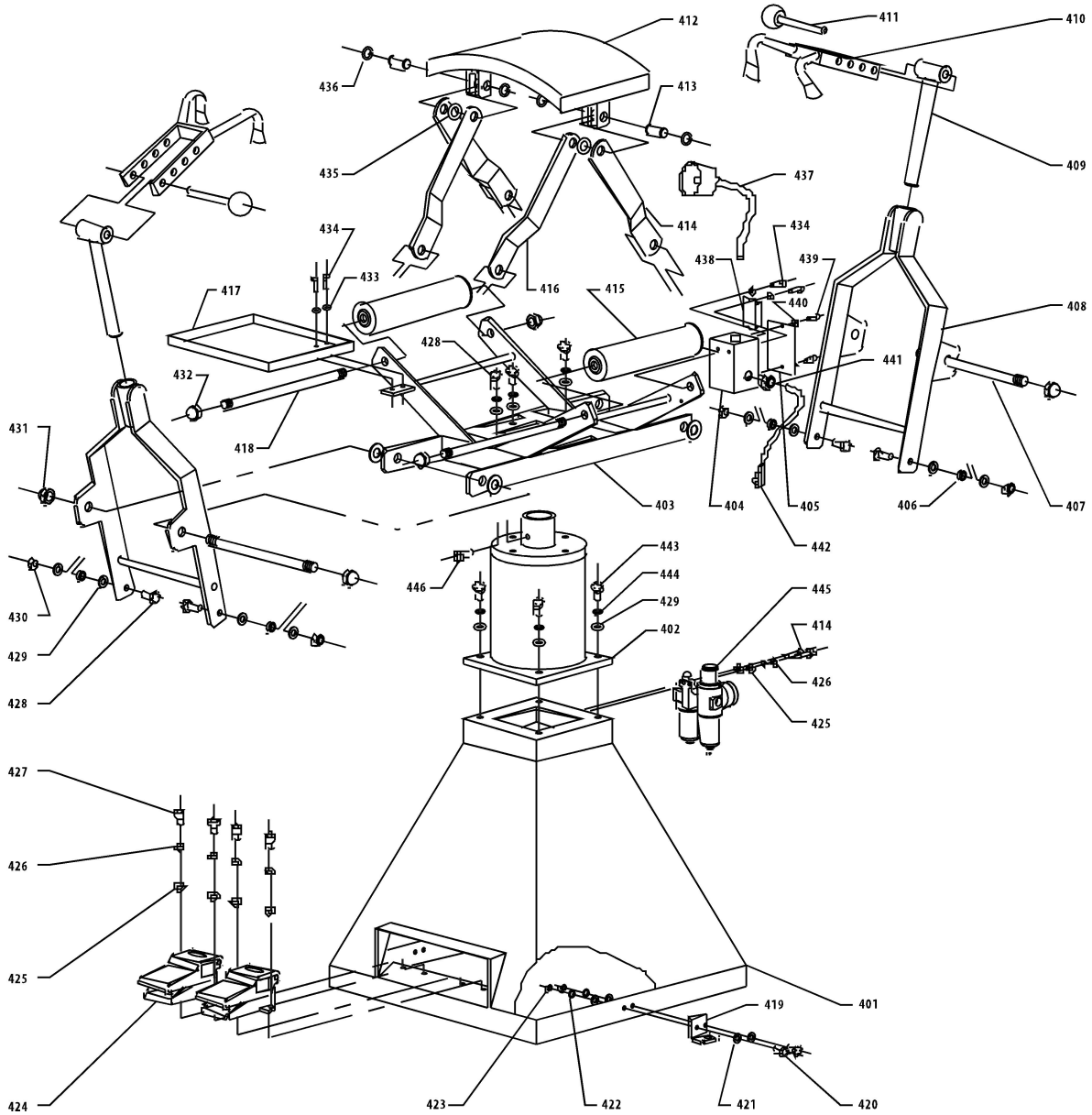
- 7 When finished repairing tires, step down the release foot valve to release air pressure, spread hook to release then demount the tire from machine.



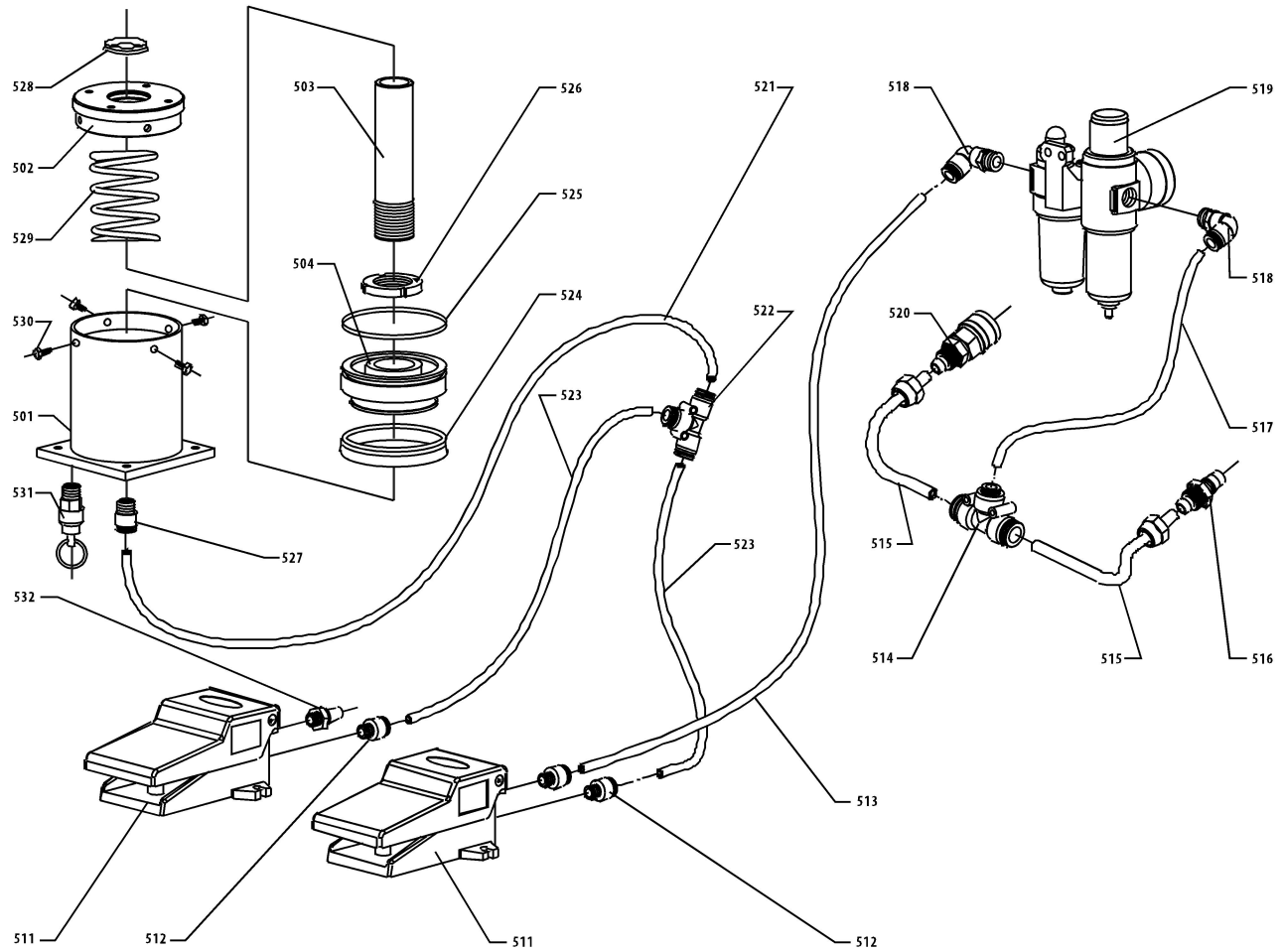
MAINTENANCE

- * Add the lubrication oil to the oil cup at any time, always guarantee that the oil quantity in the cup is $\frac{1}{3}$ - $\frac{2}{3}$ of the total volume. For every 5-6 uses adjust drip oil in piston. Ensure that the oil pathway is clear.
- * Clear away the dust and sundries always, check whether the fasteners are loose or not.
- * Drip oil to the piston rod and the various parts of pin regularly. Reducing friction, extending machine life.

Body Assembly



Pneumatics Assembly



| AME | NO | DESCRIPTION | QUANTITY |
|-------|-----|------------------------------|----------|
| 73100 | 401 | Main Body | 1 |
| 73100 | 402 | Cylinder | 1 |
| 73100 | 403 | Bracket | 1 |
| 73100 | 404 | Power box | 1 |
| 73100 | 405 | Box cover | 1 |
| 73100 | 406 | sheath | 4 |
| 73100 | 407 | Staff 1 | 2 |
| 73100 | 408 | Waver rack | 2 |
| 73100 | 409 | Shaft | 2 |
| 73100 | 410 | Spread hook | 2 |
| 73100 | 411 | Align pin | 2 |
| 73100 | 412 | Coping | 1 |
| 73100 | 413 | Coping shaft | 2 |
| 73100 | 414 | Connect board 2 | 2 |
| 73100 | 415 | Bracket unite element | 2 |
| 73100 | 416 | Connect board 1 | 2 |
| 73100 | 417 | Tool salver | 1 |
| 73100 | 418 | Staff 2 | 2 |
| 73100 | 419 | Corner angle iron | 2 |
| 73100 | 420 | Hexangular bolt M6X16 | 4 |
| 73100 | 421 | Even gasket 6 | 8 |
| 73100 | 422 | Spring gasket 6 | 4 |
| 73100 | 423 | Hexangular nut M6 | 4 |
| 73100 | 424 | Step valve | 2 |
| 73100 | 425 | Big even gasket 5 | 2 |
| 73100 | 426 | Spring gasket 5 | 6 |
| 73100 | 427 | Column hexangular bolt M5X16 | 8 |
| 73100 | 428 | Hexangular bolt M10X25 | 8 |
| 73100 | 429 | Even gasket 10 | 8 |
| 73100 | 430 | Cease nut M10 | 16 |
| 73100 | 431 | Cover nut M16 | 4 |
| 73100 | 432 | Hexangular nut M5 | 4 |
| 73100 | 433 | Even gasket 5 | 2 |
| 73100 | 434 | Cover nut M14 | 4 |
| 73100 | 435 | Even gasket 16 | 6 |
| 73100 | 436 | Shaft pring block ring16 | 4 |
| 73100 | 437 | Working light | 1 |
| 73100 | 438 | Column hexangular bolt M5X10 | 2 |
| 73100 | 439 | Crossed setboltM4X8 | 2 |
| 73100 | 440 | Transformer | 1 |
| 73100 | 441 | Even gasket 4 | 2 |
| 73100 | 442 | Across line | 1 |
| 73100 | 443 | Power line | 1 |
| 73100 | 444 | Hexangular bolt M10X30 | 4 |
| 73100 | 445 | Column hexangular bolt M8X16 | 1 |
| 73100 | 446 | Spring gasket 10 | 8 |
| 73100 | 447 | Oil-water separator | 1 |

| AME | NO | DESCRIPTION | QUANTITY |
|-------|-----|-------------------------|----------|
| 73100 | 501 | Cylinder | 1 |
| 73100 | 502 | Cylinder cover | 1 |
| 73100 | 503 | Piston staff | 1 |
| 73100 | 504 | Piston | 1 |
| 73100 | 511 | Step valve | 2 |
| 73100 | 512 | Direct tie-in | 3 |
| 73100 | 513 | PU pipe | 2 |
| 73100 | 514 | red-tee | 1 |
| 73100 | 515 | PU pipe | 2 |
| 73100 | 516 | Metal speediness tie-in | 1 |
| 73100 | 517 | PU pipe | 1 |
| 73100 | 518 | Right angle tie-in | 2 |
| 73100 | 519 | Oil-water separator | 1 |
| 73100 | 520 | Metal speediness tie-in | 1 |
| 73100 | 521 | PU pipe | 1 |
| 73100 | 522 | Straight tee | 1 |
| 73100 | 523 | PU pipe | 1 |
| 73100 | 526 | PU pipe | 1 |
| 73100 | 527 | PU pipe | 1 |
| 73100 | 528 | Y- windtight ring | 1 |
| 73100 | 529 | O- windtight ring | 1 |
| 73100 | 530 | Circinal nut M56X2 | 1 |
| 73100 | 531 | Dustproof ring | 1 |
| 73100 | 532 | constringent spring | 1 |
| 73100 | 533 | Hexangular bolt M10X16 | 4 |
| 73100 | 534 | Safety valve | 1 |
| 73100 | 535 | Silencer | 1 |