



# Speed Rollers

**Model:** ZSUW, ZDUW, ZDUB  
**Capacity:** 1 to 10 tons



Model:  
ZDUW (top view)



Model:  
ZDUW (bottom view)



ZDUB (bottom view)



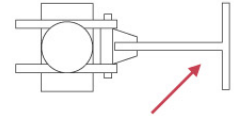
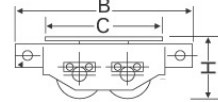
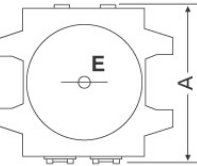
ZDUB (top view)



ZSUW (top view)



ZSUW (bottom view)



For applications w/ more than 2 rollers, please use connecting bar to avoid wiggle movement.

## Usage

Our line of speed rollers are designed for moving heavy, oversized equipment, cargo and machinery. All-steel or heavy-duty aluminum speed rollers securely support and transport extra heavy loads in a safe, worker-wise manner.

## Special Features

1. Selection of three different types of speed rollers.
2. Low-profile type (P Series) are lightweight with a low overall height, assuring user safety while transferring heavy loads with a low center of gravity.
3. Standard type rollers contain single or double rows of rollers for straight forward movement.
4. Swing rollers (Bogie type) can turn up to 35°, enabling an easy change of direction while loaded.
5. Urethane rollers made of high-strength elastic are used to reduce the starting force. In addition, they are oil resistant and extremely durable.
6. All models feature a free-turning top plate making it easy to rotate a heavy load.

Model Number	Capacity (Tons)	Overall Height (in) H	Overall Width (in) A	Overall Length (in) B	Table C Ø	Threaded Hole E Ø	Roller (Pcs) Ø l (in)	Roller pc	Ship Wt. (lbs)
<b>Heavy Duty Steel Body Rollers</b>									
<b>Single row, Urethane rollers, Standard</b>									
ZSUW-1.5	1.5	4 1/8	8 1/2	8 1/4	4 1/8	M16	3 1/8 X 3 1/8	2	18
ZSUW-2.5	2.5	5	12 3/8	9 7/8	6	M16	3 7/8 x 4 7/8	2	42
<b>Double rows, Urethane rollers, Low-profile</b>									
ZDUW-1P	1	2 5/8	7 3/4	10 1/4	6 1/8	M16	2 3/8 x 3 1/8	4	11
ZDUW-3P	3	3 1/8	8 5/8	10 1/4	6 1/8	M20	3 1/8 X 3 1/8	4	20
ZDUW-5P	5	4 1/8	8 5/8	12	7	M20	3 7/8 x 4 7/8	4	32
<b>Double rows, Urethane rollers, Standard</b>									
ZDUW-2	2	3 1/8	8 1/2	9 7/8	6	M16	2 3/8 x 3 1/8	4	25
ZDUW-3	3	4 1/8	8 1/2	11 5/8	7 7/8	M20	3 1/8 X 3 1/8	4	33
ZDUW-5	5	5	12 3/8	14	9 1/2	M20	3 7/8 x 4 7/8	4	79
<b>Double rows, Urethane rollers, Bogie Type</b>									
ZDUB-2	2	4 1/8	9 7/8	11 7/8	7 7/8	M20	3 1/8 X 3 1/8 2 x 2 7/8	2 2	40
ZDUB-3	3	5	12 1/8	14	9 1/2	M20	3 7/8 x 4 7/8 2 7/8 x 4 7/8	2 2	66
<b>Aluminum Body Rollers</b>									
<b>Double rows, Urethane rollers, Standard</b>									
ZDUW-3A	3	3 3/8	8 5/8	11	6 3/4	M16	2 3/8 x 3 1/8	4	18
ZDUW-5A	5	4 3/8	9	13	7 7/8	M20	3 1/8 X 3 1/8	4	31