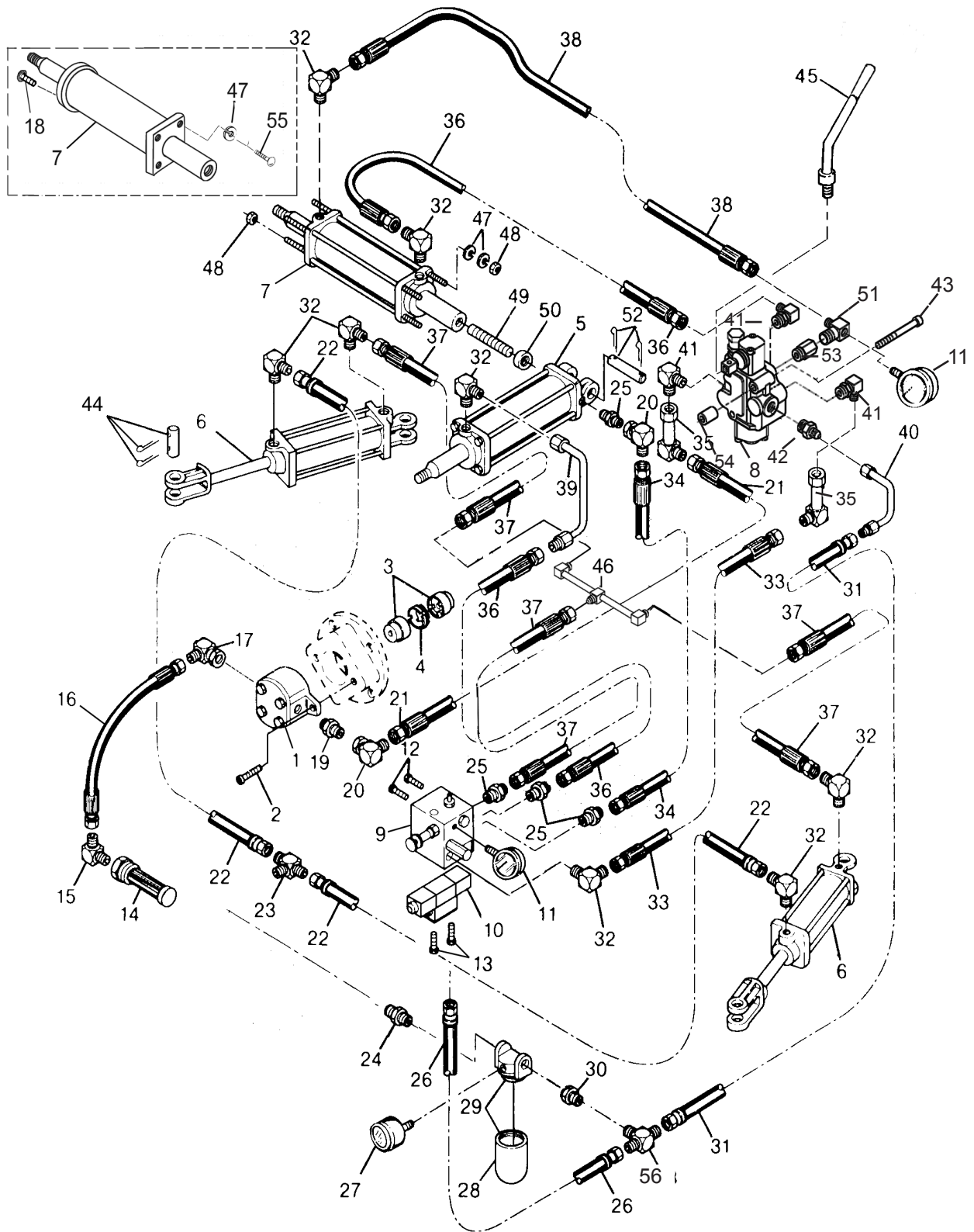


Section VI

Hydraulic Replacement Parts - 2008, 2806, 2100, 2007, 2801, HB-10, 1600



Hydraulic Replacement Parts - 2008, 2806, 2100, 2007, 2801, HB-10, 1600

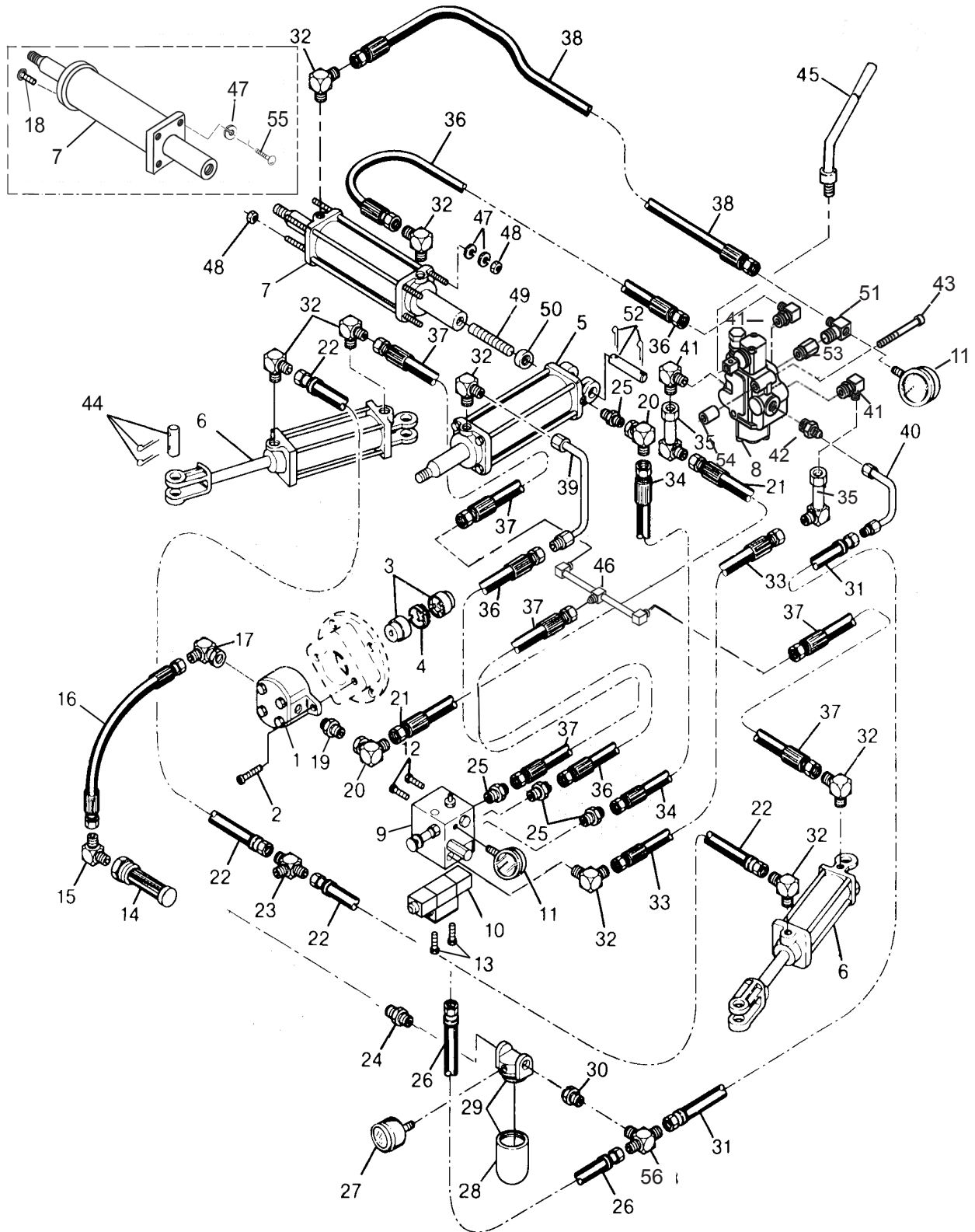
KEY	PART NO.	DESCRIPTION	QUANTITY				REMARKS
			2100	2008 2007	2806 2801	HB-10 1600	
1	92116	Pump, Hydraulic	1	1	1	-	
	92117	Pump, Hydraulic (High Speed)	1	1	1	1	For 7½ HP motor. Not available for HB-10
	92114	Pump, Hydraulic	-	-	-	1	
2	97267	Bolt, Hex Hd. 3/8"-16 x 1"	2	2	2	2	
3	92357	Coupler	1	1	1	-	Includes P/N 92358 Spyder
	92356	Coupler	--	-	-	1	
4	92358	Spyder, Rubber	1	1	1	1	
5	92169	Cylinder, Main Industrial	1	1	-	-	Includes Pin
	92235	Seal Kit	1	1	-	-	Includes All Seals for P/N 92169
	92161	Rod, Tie	4	4	-	-	For P/N 92169
	92048	Cartridge, Packing Gland	1	1	-	-	Sold without Seals for P/N 92169
	92158	Cylinder, Main Agricultural	-	-	1	-	Includes Pin
	92208	Seal Kit for 92158	-	-	1	-	For Benders Built After 3/1/91
	92172	Cylinder, Main Welded	-	-	-	1	Includes Pin
6	92150	Cylinder, Side Industrial	2	2	-	-	Includes Pins
	92236	Seal Kit for 92150	1	1	-	-	Includes All Seals for P/N 92150
	92159	Cylinder, Side Agricultural	-	-	2	-	Includes Pins
	92207	Seal Kit for 92159	-	-	1	-	For Benders Built After 3/1/91
	92173	Cylinder, Side Welded	-	-	-	2	Includes Pins
7	92256	Cylinder, Double End, Ag.3½"	1	1	1	1	
	92355	Cylinder, Double End, Ind. 3"	1	1	-	-	For Benders Built Before 5/90
	92209	Seal Kit for 92256	1	1	1	-	For Benders Built After 3/1/91
	92205	Seal Kit for 92355	1	1	-	-	
	92174	Cylinder, Double End	-	-	-	1	Sold as Assembly Only
8	92103	Valve, Swager	1	1	1	1	
9	92165	Valve, Sequence	1	1	1	1	
10	92168	Valve, Directional	1	-	-	-	24 Volt
	92164	Valve, Directional	-	1	1	1	220 Volt
11	92100	Gauge, Pressure	2	2	2	2	
12	97221	Bolt, Hex 3/8"-16 x 1/2"	2	2	2	2	
13	97377	Screw, Sk. Hd. Cap 10-24 x 7/8"	4	4	4	4	
14	92045	Filter, Easy Flow	1	1	1	1	
15	92010	90 Ftg, 1/2ML NPT x 3/8ML JIC	1	1	1	1	
16	92272	Hose, #8, 18" Lg.	1	1	1	1	
17	92077	Elbow, 90 Degrees, 1/2-3/4	1	1	1	-	
	92078	Elbow, 90 Degrees, 1/2-5/8	-	-	-	1	
	92075	Elbow, 90 Degrees, 3/4-3/4	1	1	1	1	(For high speed pump, not avail. on HB-10)
18	97256	Bolt, Hex 1/2" - 13 x 1	-	-	-	2	
19	92026	Str Ftg, 5/8 SAE O'R x 3/8ML JIC	1	1	1	-	
	92006	Str, 3/8ML JIC x 1/2ML SAE O'R	-	-	-	1	
20	92021	90 Elb, 3/8ML JIC x 3/8FM JIC SVL	2	2	1	1	For rear of Main Cyl.-Use Ref. #32 (Mdl. 2801)
21	92273	Hose, #6, 41" Lg.	1	1	1	1	
22	92277	Hose, Return, #6, 24" Lg.	2	2	2	2	
23	92015	Branch, T Ftg, 3/8 x 3/8 x 1/4	2	2	2	2	
24	92028	Str Ftg, 1/2ML NPT x 3/8ML NPT	1	1	1	-	
25	92002	Str. Ftg., 1/2" ML NPT x 3/8" ML JIC	5	5	4	5	
26	92280	Hose, Return, #6, 13" Lg.	1	1	1	1	
27	92292	Gauge, Filter	1	1	1	-	
28	92290	Filter	1	1	1	-	
29	92289	Filter Assembly	1	1	1	-	Includes Filter, Head & Gauge
30	92027	Str Ftg, 1/2ML NPT x 1/4FM NPT	1	1	1	-	
31	92279	Hose, Return, #6, 56" Lg.	1	1	1	1	
32	92009	90 Ftg, 1/2ML NPT x 3/8ML JIC	9	9	10	9	
33	92275	Hose, #6, 58" Lg.	1	1	1	1	
34	92274	Hose, #6, 50" Lg.	1	1	1	1	
35	92023	90 Lg Elb, 3/8 ML JIC x 3/8FM JIC	2	2	2	2	
36	92264	Hose, #6, 23-1/2" Lg.	2	2	2	2	
37	92261	Hose, #6, 15-1/2" Lg.	3	3	3	3	
38	92263	Hose, #6, 19" Lg.	1	1	1	1	
39	92312	Tube, 6-6	1	1	1	1	Cylinder

(Continued on next page)

Section VI

Hydraulic Replacement Parts - 2008, 2806, 2100, 2007, 2801, HB-10, 1600

(Continued from previous page)



Hydraulic Replacement Parts - 2008, 2806, 2100, 2007, 2801, HB-10, 1600

KEY	PART NO.	DESCRIPTION	QUANTITY				REMARKS
			2100	2008 2007	2806 2801	HB-10 1600	
							(Continued from previous page)
40	92313	Tube, 6-6	1	1	1	1	Valve
41	92004	90 Elb, 1/2ML SAE O'R 3x8ML JIC	3	3	3	3	
42	92006	Str, 3/8ML JIC x 1/2ML SAE O'R	1	1	1	-	
43	97206	Socket Head Cap Screw, 3/8"-16 x 3-1/4"	2	2	2	2	
44	92202	Pin, Side Cylinder	4	4	4	4	Industrial & Agricultural
45	92109	Handle, Swager	1	1	1	1	
46	92314	Fitting, 3-Way	1	1	1	1	
47	97383	Washer, Lock 1/2"	8	8	8	4	
48	97208	Nut, Jam 1/2"-13	6	6	6	-	
49	97051	Stud, Thread 1-14	1	1	1	1	
50	97100	Nut, Knurl	1	1	1	1	
51	92009DT	90 Ftg, 1/2ML NPT x 3/8ML JIC, DT	1	1	1	1	For Pressure Gauge
52	92203	Pin, Main Cylinder	1	1	1	1	Industrial & Agricultural
53	92008	Str Ftg, 1/2ML SAE O'R x 1/2 FM NPT	1	1	1	1	Industrial & Agricultural
54	70045	Bushing, Steel	2	2	2	2	Industrial & Agricultural
55	97217	Screw, Socket 1/2-13, 1-1/2	-	-	-	4	