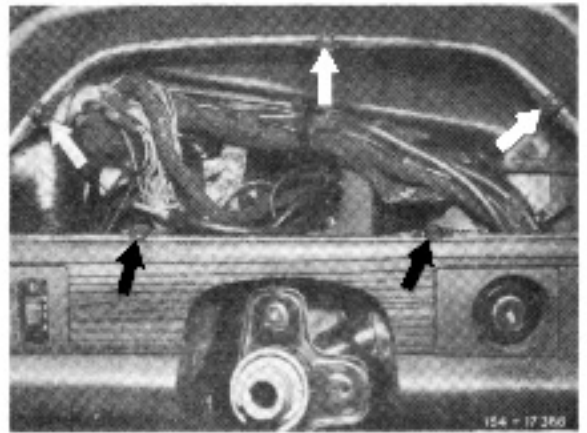


M 0333 Instructions

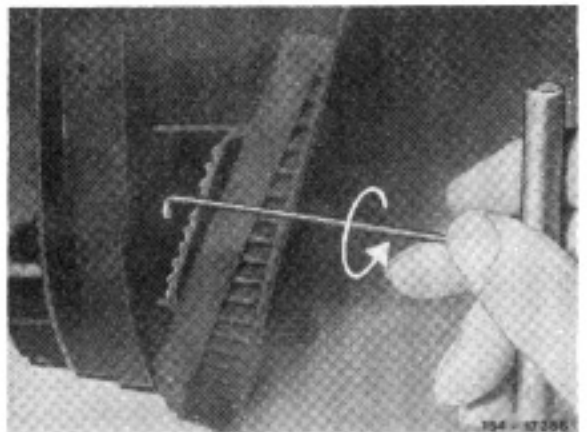
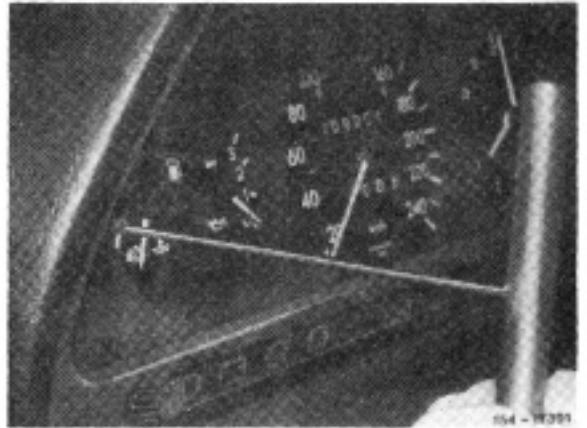
Note:

The instrument cluster is held in position by means of five spring clips located on instrument panel.

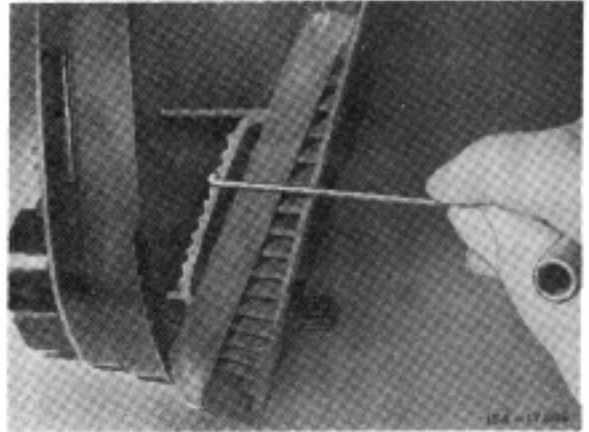


Removal:

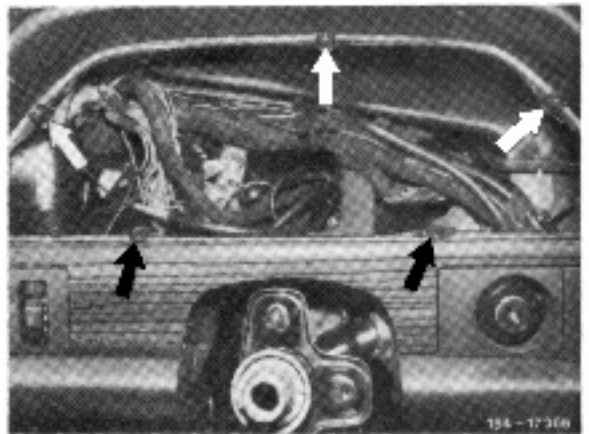
1. Remove steering wheel.
2. Carefully introduce pulling hook, with curvature in downward direction, laterally between instrument cluster and instrument panel.
3. Turn pulling hook to the left by 90°.



4. Carefully pull out pulling hook until it rests against recess on instrument cluster.



5. Pull instrument cluster out of holder by means of pulling hook. The instrument cluster is held by means of five spring clips located on instrument panel (arrows).



6. Pull off electrical connections and remove instrument cluster.

Installation:

7. For installation, proceed vice versa.

8. When installing instrument cluster, push uniformly into instrument panel.

