

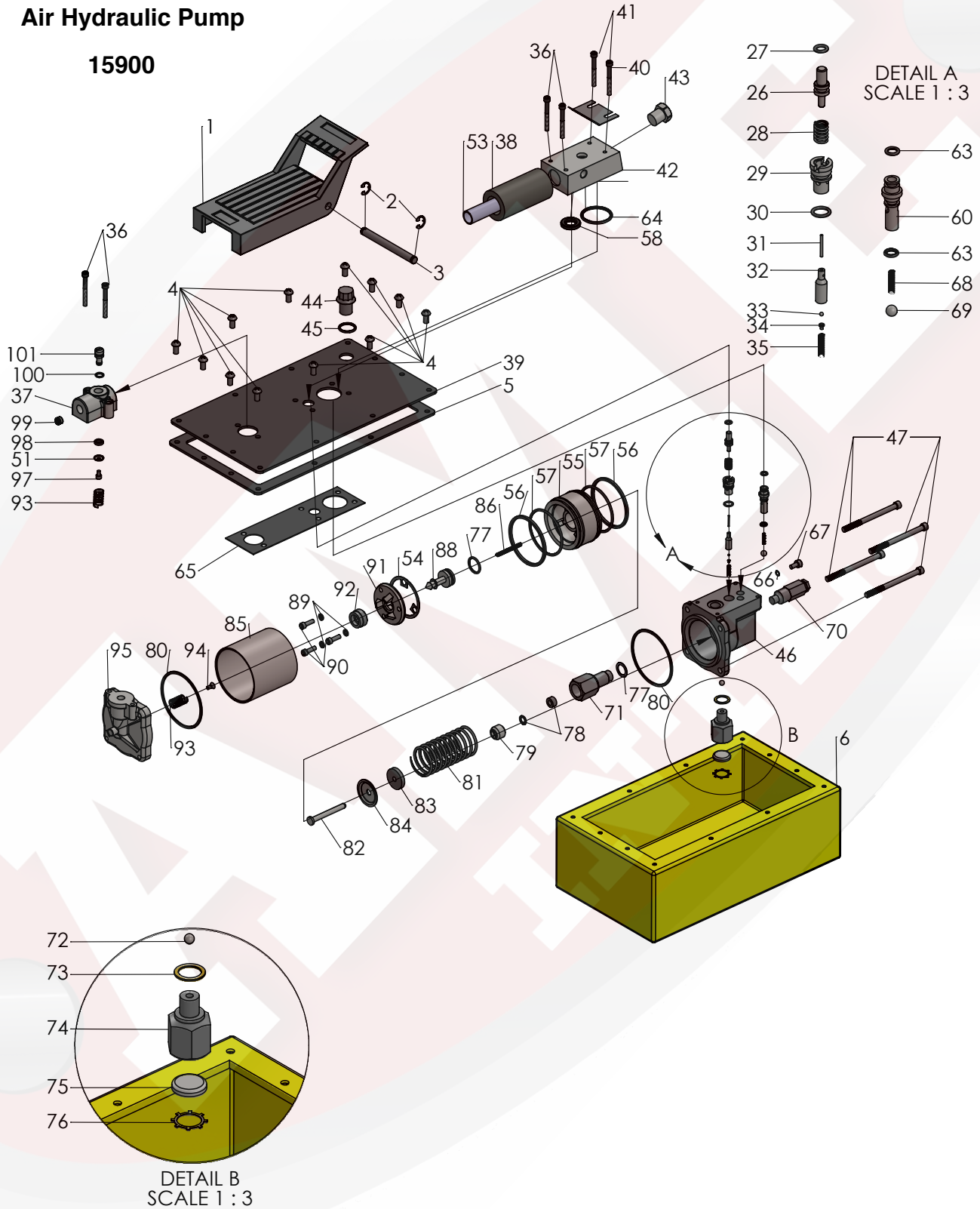


# PARTS BREAKDOWN

## Parts List For

### Air Hydraulic Pump

15900





# PARTS BREAKDOWN

## Parts List For Air Hydraulic Pump

15900

Item	Part No.	Stock No.	Qty	Description	Item	Part No.	Stock No.	Qty.	Description
1	15900-001	41322	1	Foot Pedal	58	15900-058	*10276	1	O-Ring
2	15900-002	*11032	2	Retaining Ring	59	15900-059	*10272	1	O-Ring
3	15900-003	28386	1	Pin	60	15900-060	34378	1	Check Valve Body
4	15900-004	211060	6	Screw	61	15900-061	*250638	1	Filter Disc
5	15900-005	*33853	1	Reservoir Gasket	62	15900-062	*11088	2	Retaining Ring
5	15920-005	*46271	1	Reservoir Gasket	63	15900-063	*12522	2	O-Ring
5	15940-005	*47409	1	Reservoir Gasket	64	11010-015	*11841	1	O-Ring
6	15900-006	61243	1	Reservoir	65	15900-065	*351021	1	Gasket
6	15920-006	64153OR	1	Reservoir	66	11000-022	*10442	1	Washer
6	15940-006	61165	1	Reservoir	67	15900-067	10002	1	Cap Screw
7	15900-007	*305494	1	Decal	68	15900-068	*10445	1	Compression Spring
8	15900-008	302466	1	Spring Clip	69	15900-069	*10423	2	Steel Ball
9	15900-009	260154	1	Trade Name Decal	70	15900-070	-	-	Relief Valve
10	15900-010	251762	1	Warning Decal	71	15900-071	45278	1	Piston Cylinder
11	15900-004	211060	4	Screw	72	11010-014	*10375	1	Steel Ball
11	15940-004	252168	4	Screw	73	11010-019	*10261	1	Copper Washer
25	15900-025	*2066504	1	Foam Tube	74	15900-074	308893	1	Filter Adapter
26	15900-026	28227	1	Release Valve Button	75	15900-075	214578	1	Filter
27	15900-027	*10266	1	O-Ring	76	15900-076	214586	1	Retaining Ring
28	11010-013	*13944	1	Compression Spring	77	15900-077	*10263	1	Copper Washer
29	15900-029	34377	1	Poppet Retainer	78	15900-078	*13934	1	U-cup & Backup
30	15900-030	*15279	1	O-Ring	79	15900-079	*304295	1	Retainer
31	15900-031	13937	1	Dowel Pin	80	15900-080	*17429	2	Back up Washer
32	15900-032	29037	1	Release Valve Poppet	81	15900-081	*13938	1	Compression Spring
33	15900-033	*14443	1	Steel Ball	82	15900-082	28226	1	Piston
34	15900-034	209736	1	Ball Retainer	83	15900-083	203143	1	Bumper
35	15900-035	*13959	1	Compression Spring	84	15900-084	210994	1	Spring Guide
36	15900-036	11151	4	Cap Screw	85	15900-085	37434	1	Air Cylinder
37	15900-037	37199	1	Intake Air Valve Body	86	15900-086	*12692	1	Compression Spring
38	15900-038	*29992	1	Foam Tube	87	15900-087	*211052	1	O-Ring
39	15900-039	420965BK2	1	Cover Plate	88	15900-088	305475	1	Exhaust Valve Stem
39	15920-039	58688BK2	1	Cover Plate	89	15900-089	*10241	3	Lock washer for #10 Bolt
39	15940-039	58706BK2	1	Cover Plate	90	15900-090	211054	3	Screw
40	15900-040	11089	2	Washer	91	15900-091	33822	1	Piston End Plate
41	15900-041	11435	2	Cap Screw	92	15900-092	*28183	1	Piston Poppet

2347 Circuit Way, Brooksville, Florida, USA 34604  
 Phone: (+1) 352-799-1111 Toll Phone: (+1) 877-775-4AME (4263)  
 Fax: (+1) 352-799-1112 E-mail: sales@ameintl.net www.ameintl.net



# PARTS BREAKDOWN

## Parts List For Air Hydraulic Pump 15900

<b>42</b>	15900-042	58563	1	Release Valve Body	<b>93</b>	15900-093	*205679	1	Compression Spring
<b>43</b>	15900-045	11127	1	Pressure Plug	<b>94</b>	15900-094	*205674	1	Screw
<b>44</b>	-	20937	1	Filler Cap	<b>95</b>	15900-095	51480	1	Rear Head
<b>45</b>	15900-045	*10273	1	O-Ring	<b>96</b>	15900-096	12691	1	Compression Spring
<b>46</b>	15900-046	64767	1	Pump Body	<b>97</b>	15900-097	13936	1	Soc. Hd Cap Screw
<b>47</b>	15900-047	17428	4	UNC x 3-1/2	<b>98</b>	15900-098	28198	1	Seal Guide
<b>51</b>	15900-051	*28182	1	Air Valve Poppet	<b>99</b>	15900-099	*216296	1	Filter Disc
<b>52</b>	15900-052	*251717	1	O-Ring	<b>100</b>	15900-100	*10267	1	O-Ring
<b>53</b>	15900-053	28387	1	Muffler					
<b>54</b>	15900-054	*28239	1	Gasket					
<b>55</b>	15900-055	52390	1	Piston Body					
<b>56</b>	15900-056	*14265	2	Piston Ring					
<b>57</b>	15900-057	*251835	2	O-Ring					

2347 Circuit Way, Brooksville, Florida, USA 34604  
 Phone: (+1) 352-799-1111 Toll Phone: (+1) 877-775-4AME (4263)  
 Fax: (+1) 352-799-1112 E-mail: sales@ameintl.net www.ameintl.net