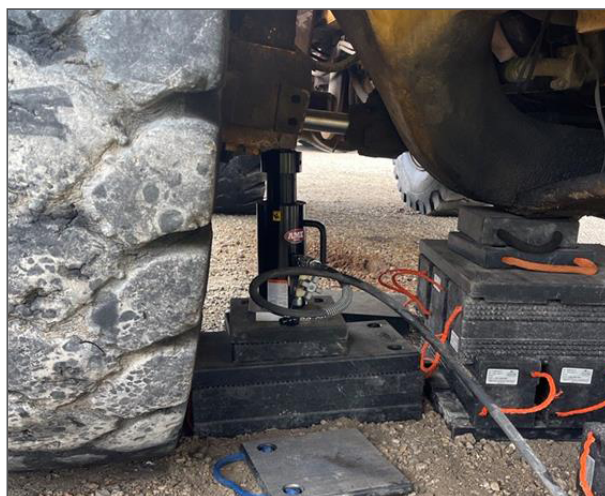




13164 ALUMINUM CYLINDER

55 TON ALUMINUM CYLINDER

- Aluminum lock-nut provides mechanical load holding for extended periods of time
- Base plate and saddle for protection against load-induced damage
- High-strength return spring for rapid cylinder retraction
- Capacity: 55 Ton
- Stroke: 6" (15 cm)
- Retracted Height: 15.59" (36 cm)
- Max. Height: 21.5" (55 cm)
- Weight: 58.4 lbs (26.5kg)
- Includes shut-off valve



www.ameintl.net

2347 Circuit Way

Brooksville FL, 34604

352-799-1111 - sales@ameintl.net

