



Toll Free: 1-800-579-8088 Web: www.zinko.com

MODEL

ZJJ Series Mechanical Journal Jack

Operating Instructions & Repair Parts List

Operation

The owner and/or operator shall have an understanding of these operating instructions and warnings before operating the jack. Warning information shall be emphasized and understood. If the operator is not fluent in English, the instructions and warning shall be read to and discussed with the operator in the operator's native language by the purchaser/owner, making sure that the operator comprehends its contents.

WARNING

For Your Safety and to Prevent Injury

1. **DO NOT OPERATE JACK BEYOND ITS RATED CAPACITY. DO NOT USE JACK IF DAMAGED.**
2. Install jack on solid base and support jack. Use friction material (concrete, wood, or steel) under base and between jack and load to prevent slipping.
3. **DO NOT APPLY TO SLANT LOADS OR SHOCK LOADS.** Center load on jack. Apply load overall to cap of jack. Unstable load may lead to damage of jack.
4. **DO NOT THROW OR DROP JACK.** Do not use jack in upside down position or in pulling position.
5. **DO NOT USE JACK BEYOND STROKE LIMIT MARK ON RAM (red line).** When using jack over limit mark, jack gets locked and becomes immovable.
6. Do not jack down when cap contacts upper face body. This action may damage the jack.
7. Use the recommended handle lever and insert it fully into the handle lever opening of ratchet, until red mark of handle lever fully disappears. Remove handle lever when not in use and store it safely (be careful not to drop handle lever).
8. **DO NOT GET UNDERNEATH LOAD.** Take safety measures to prevent workers from passing under load until it is secured by blocking.

Inspection

1. Visual inspection shall be made before each use of the jack, checking for leaking hydraulic fluid, and damaged, loose or missing parts.
2. Each jack shall be inspected by an authorized **ZINKO** service facility immediately, if subjected to an abnormal load or shock.
3. Owners and/or users should be aware that repair of this equipment may require specialized knowledge and facilities. It is recommended that an annual inspection of the jack be made by an authorized **ZINKO** service facility and that any defective parts, decals or warning labels be replaced with genuine **ZINKO** parts. A list of authorized service facilities is available from **ZINKO**.

Damaged Jacks

Any jack which appears to be damaged in any way, is found to be badly worn, or operates abnormally SHALL BE REMOVED FROM SERVICE until necessary repairs are made by an authorized **ZINKO** service facility.

Operating Instructions (Before Use)

1. Turn the ratchet handle to check whether ram goes up and down smoothly. Screw the 2-piece aluminum handle together before use.
2. Inspect condition visually before placing under or supporting load. Make sure jack has correct capacity.
3. Push the liner of the ratchet handle to "UP" position and operate the handle lever up and down. Then push the liner of the ratchet handle to "DOWN" position and operate the handle lever up and down.

Using the Jack

1. Operation must be done by hand operated lever. Make sure to insert the handle lever into the bottom of ratchet handle. NOTE: Incomplete insertion of the handle lever leads to slipping off during operation).
2. Make sure that ground is level and stable where jack is placed. Make sure jacks has enough space to operate and adjust safely. NOTE: The jack is designed for indoor use only. However, in case of outdoor use, jack is not protected from rain and water.
3. Use a friction material (wood or paper) between cap of jack and load. This protects the load from slipping off.

Using More Than One Jack

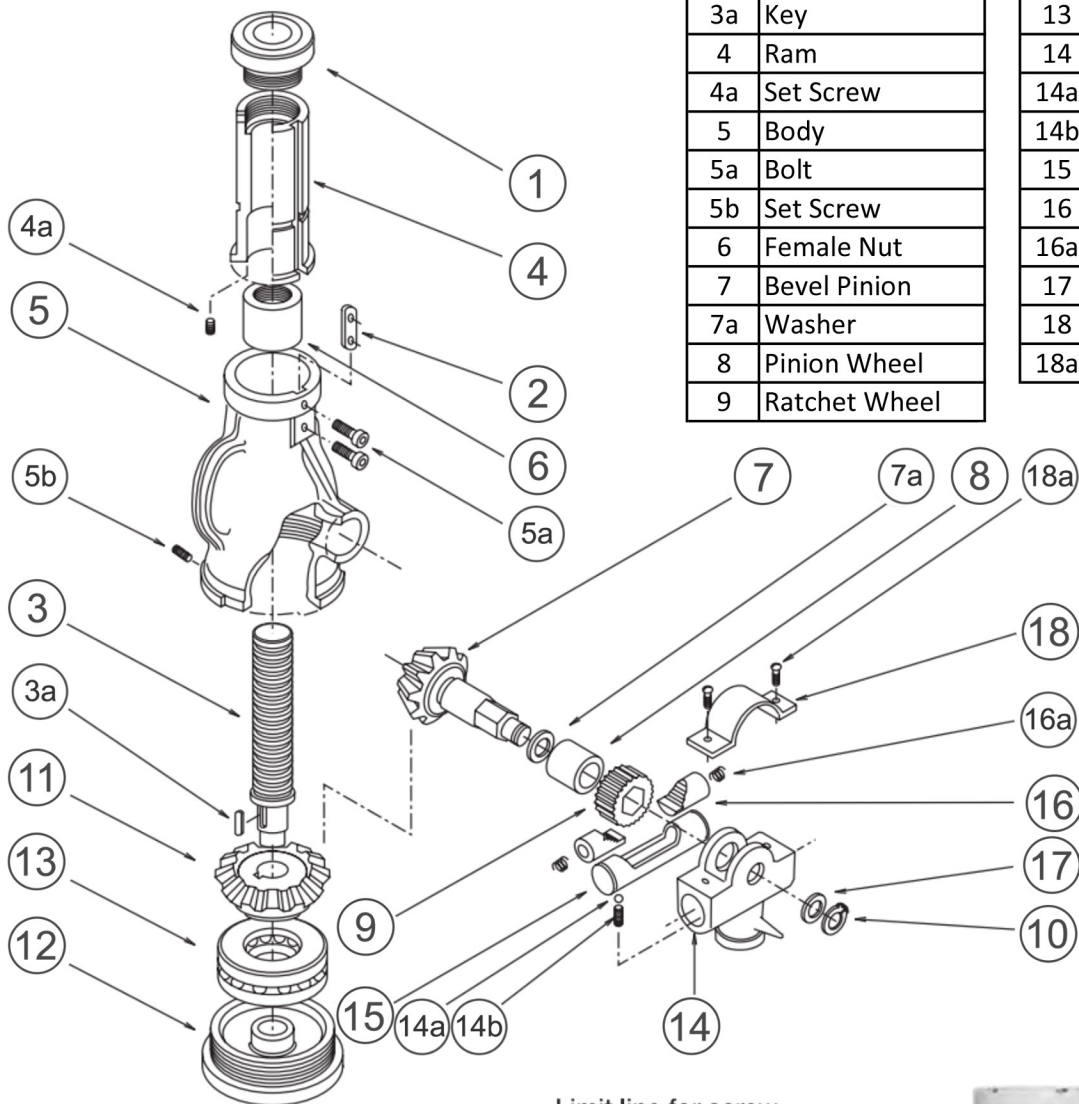
1. Load may tend to be applied unevenly to each jack. When using multiple jacks; **MAKE SURE ALL JACKS BEING USED HAVE THE CORRECT CAPACITY FOR YOUR APPLICATION.** Use jack no higher than **50% TO 70%** of rated capacity.
2. Take care of movement load when operating multiple jacks. Determine operation order of each jack in advance making sure the load is well balanced and in the correct position.

Zinko Hydraulic Jack

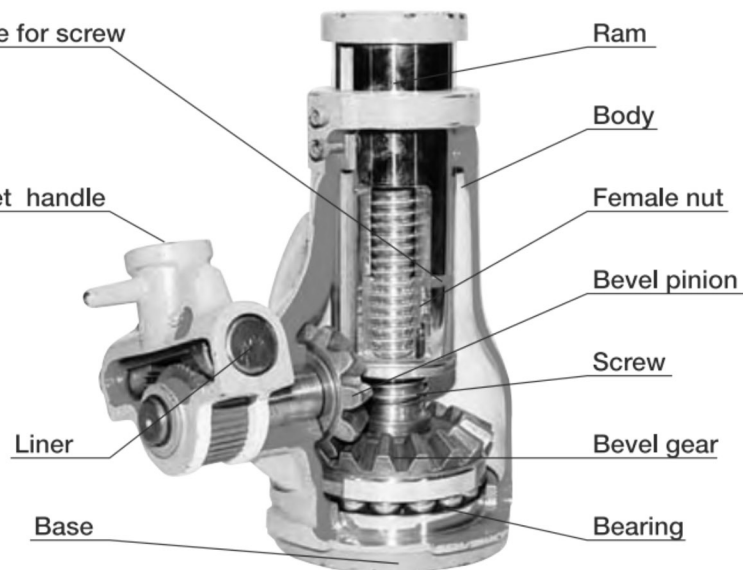
Model: ZJJ Series

No.	Description
1	Cap
2	Key
3	Screw
3a	Key
4	Ram
4a	Set Screw
5	Body
5a	Bolt
5b	Set Screw
6	Female Nut
7	Bevel Pinion
7a	Washer
8	Pinion Wheel
9	Ratchet Wheel

No.	Description
10	Snap Ring
11	Bevel Gear
12	Base
13	Bearing
14	Ratchet Case
14a	Steel Ball
14b	Spring
15	Liner
16	Plunger
16a	Spring
17	Washer
18	Cover
18a	Machine Screw



Limit line for screw



Zinko Hydraulic Jack

Model: ZJJ Series

Maintenance

1. **Lubrication.** (rust-resistant and supply of grease)

Completely eliminate dust and apply grease regularly to prevent rust.

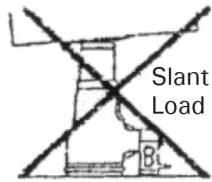
2. **Cleaning.**

Jacks exposed to rain, sand, or grit-laden air should be cleaned prior to storage and use. Jack operating lever and load-bearing surfaces should be free of slippery materials and fluids

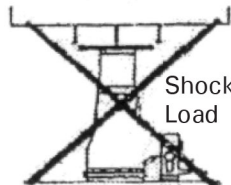
3. **Storing Jack.** Jacks should be stored where protected from the elements, abrasive dust, and other damage.

SAFETY PRECAUTIONS

Safety shoes, gloves, helmet, and clothes are recommended to protect operators' safety.

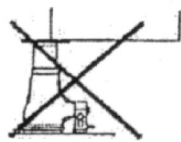


Slant Load

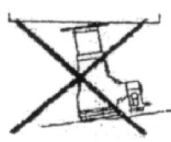


Shock Load

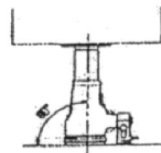
1) Do not apply slant loads or shock loads to jack.



Line Contact

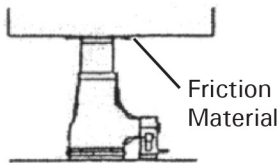


Spot Contact



Center Load

2) Center load on jack. Apply load overall to cap of jack. Unstable load may lead to damage of jack.

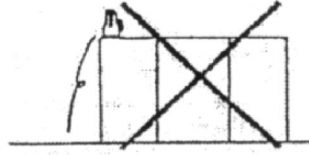


Friction Material

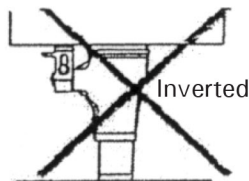
3) Set jack to concrete, wood, or steel base which is strong enough to endure load.



4) Do not throw or drop jack (especially ZAJ series).

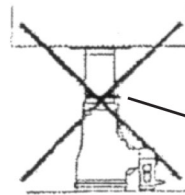


Pulling

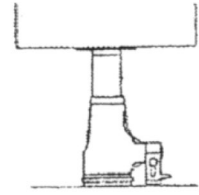


Inverted

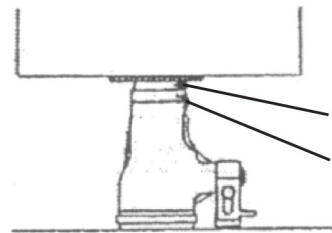
5) Do not use the jack in upside down or pulling position.



Stroke Limit Mark (red line)

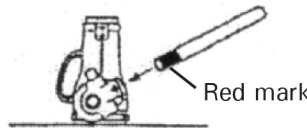


6) Do not use jack beyond stroke limit mark on ram (red line) When using jack over limit mark, jack becomes locked and immovable.

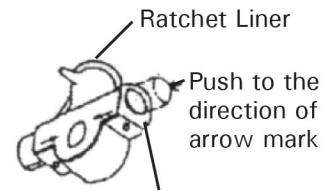


Lower face of cap
Upper face of body

7) Do not jack down when cap contacts upper face body. When jack down is continued, jack may be damaged.



Red mark



Ratchet Liner

Push to the direction of arrow mark

Insert handle all the way into position

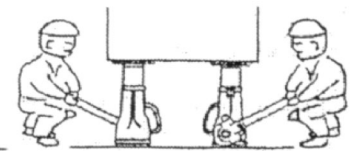
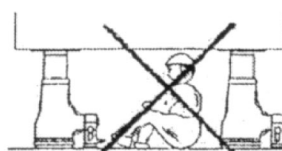


One-piece handle (ZJJ series)



Two-piece handle (ZAJ series)

8) Use the recommended handle lever and insert it fully into the handle lever opening of ratchet until red mark on handle lever disappears.



9) Keep out of being under the load. Prevent workers from passing under load until it is secured by blocking.