



## Operating Instructions & Repair Parts List

### Operation

The owner and/or operator shall have an understanding of these operating instructions and warnings before operating the jack. Warning information shall be emphasized and understood. If the operator is not fluent in English, the instructions and warning shall be read to and discussed with the operator in the operator's native language by the purchaser/owner, making sure that the operator comprehends its contents.

### ⚠ WARNING

#### For Your Safety and to Prevent Injury

1. Use the jack for lifting purposes only. This jack is designed to **LIFT** loads, not support loads. Immediately support a lifted load with jack stands.
2. **THE VEHICLE OWNER'S MANUAL SHOULD BE CONSULTED PRIOR TO THE LIFTING OF THE VEHICLE.**
3. To prevent tipping, set up the jack on a hard, level surface.
4. Stay clear of lifted loads.
5. Center the load on the jack saddle. Off-center loads can damage the seals and cause hydraulic failure.
6. **USE SAFETY STANDS UNDER THE AXLE AFTER LIFTING THE VEHICLE.**
7. **DO NOT GO UNDER VEHICLE IF IT IS SUPPORTED ONLY BY A JACK.**
8. **WHEN LOWERING THE VEHICLE, MAKE SURE NOBODY IS IN, AROUND OR UNDER THE VEHICLE.**
9. **THE SAFETY VALVE IS FACTORY ADJUSTED AND NO FURTHER ADJUSTMENT IS REQUIRED.**
10. **FAILURE TO READ THESE WARNINGS MAY RESULT IN LOSS OF LOAD, DAMAGE TO JACK, PERSONAL INJURY AND/OR PROPERTY DAMAGE.**
11. Read, understand, and follow the operating instructions, the **ANSI B30.1** and **ASME PALD-1** safety standards for jacks.
12. Inspect the jack before each use; do not use the jack if damaged, altered, or in poor condition.
13. The load must not exceed the rated lifting capacity of the jack. Lift only dead weight.

### Operating Instructions

1. Before using, add 1/2 oz. of clean lubricating oil to air inlet. Lack of oil can cause malfunction of air pump.  
**Proper Oil:** ISO VG 10 or equivalent. **NOTE:** Be sure to: **a)** Use clean, dry air. **b)** Dirty or humid air may cause malfunction of air pump. **c)** Clean dirt from air houses and connect together.
2. Close release valve securely, depress valve button and check if ram rises. Open release valve and check if ram lowers.
3. Pull handle lever up and lock handle in the most convenient operating position. Center saddle of jack under point of contact and raise saddle.
4. Once saddle contacts load, **STOP** and **RE-CHECK** point of contact to insure load is centered.
5. Raise load to desired height and transfer load to jack stands.
6. To lower the load, turn release valve **SLOWLY** counter-clockwise. **DO NOT** turn release valve more than twice; this may cause sudden lowering.

**If jack is laid down before using or during transit, jack may become "air-bound".**

#### To remove air from the hydraulic system:

1. Open release valve.
2. With air supply connected, activate air pump 10-15 seconds.
3. Close release valve and check normal operation.

**If ram still does not rise, follow the procedure below to remove air completely:**

1. Remove cover.
2. Remove plug.
3. Activate air pump slowly by controlling valve button, allowing air to blow as bubbles. Do not activate pump quickly. Air will hardly blow out by quick activation of pump.
4. Reinstall and tighten plug after air blows out.
5. Remove oil plug and check oil level.
6. Check normal operation.

### Maintenance

1. Keep oil reservoir filled.

**To do so:** a) With ram in lowest position, remove filter plug.

b) Fill reservoir with clean hydraulic jack oil until oil is level with bottom of fill hole.

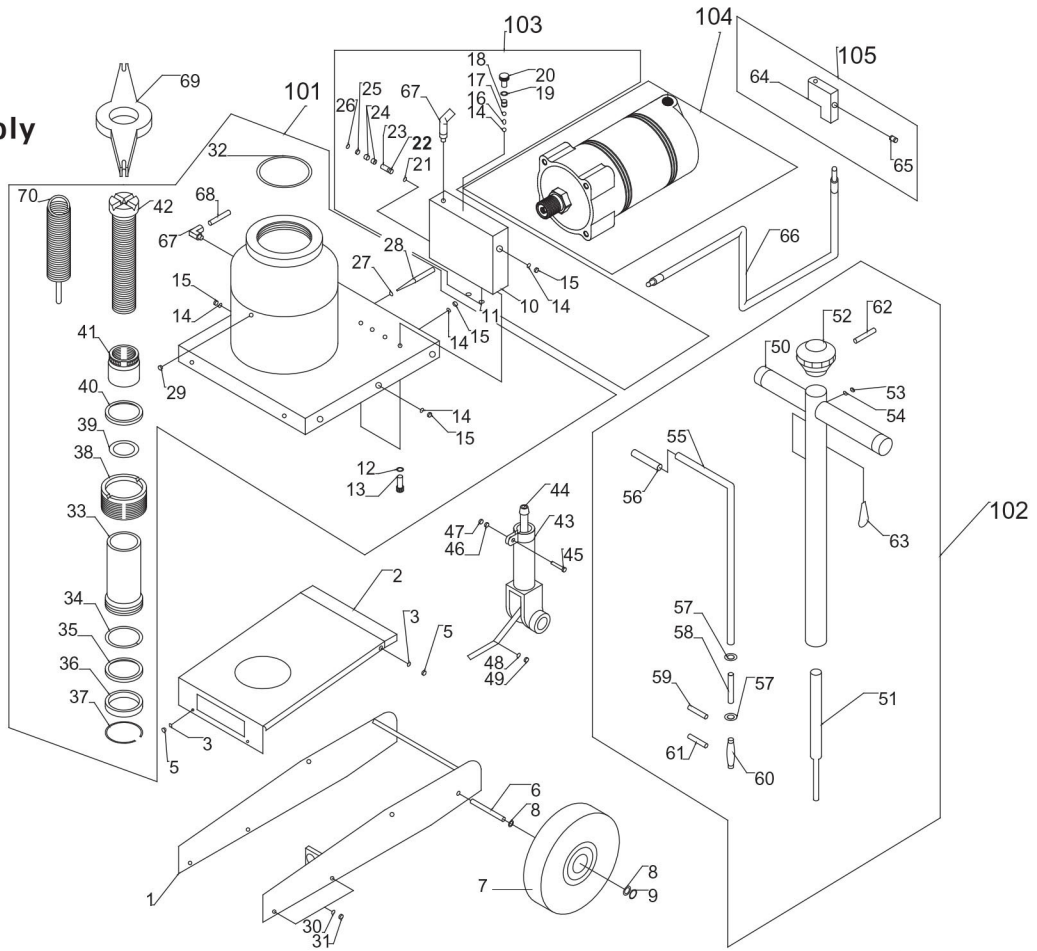
**Proper Oil:** ISO VG 10 or equivalent. **DO NOT USE HIGH VISCOSITY OIL, OR VOLATILE OIL SUCH AS BRAKE FLUID OR VEGETABLE OIL.**

2. Clean the jack after using. Check sliding and rotating and oil as needed.
3. When storing jack, keep handle upright and ram in lowest position.

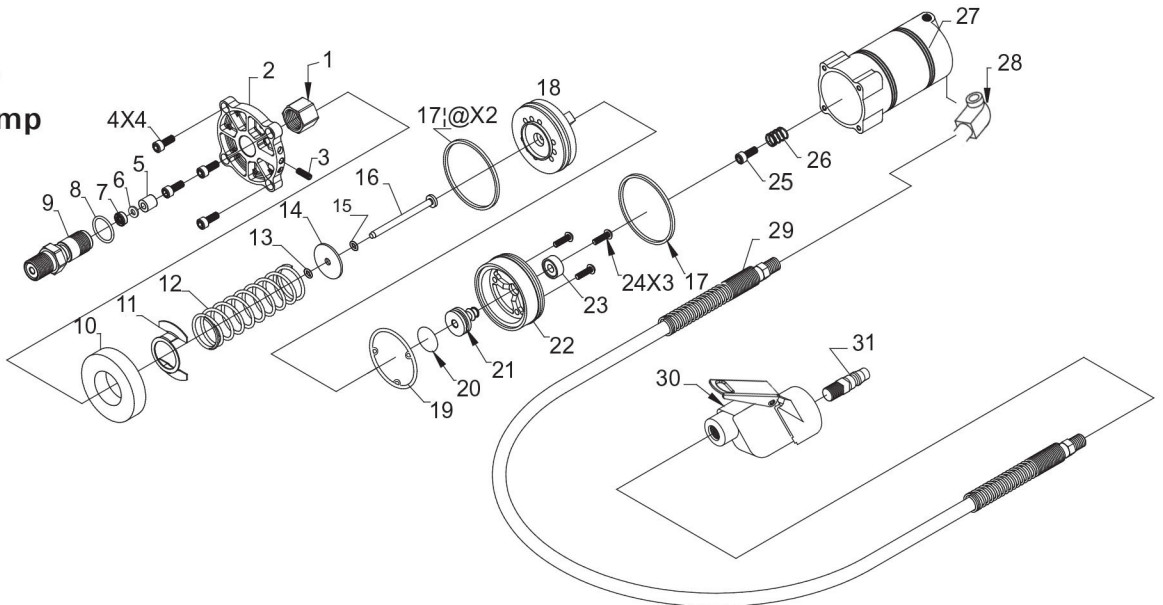
# Zinko Hydraulic Jack

Model: ZATJ-22S-4v2

## Jack Assembly



## Air Pump



# Zinko Hydraulic Jack

## Model: ZATJ-22S-4v2

### REPAIR PARTS LIST

No.	Part #	Description	No.	Part #	Description	No.	Part #	Description
1	90602204 - 1	FRAME ASSY	27	9060220S - 28	*O-RING	53	9060220S - 62	SCREW
2	90602204 - 2	COVER	28	90602204 - 28	RELEASE STEM	54	9060220S - 63	SPRING WASHER
3	9060220S - 4	WASHER	29	9060220S - 30	OIL PLUG	55	9060220S - 64	LEVER
5	90602204 - 5	BOLT	30	90602204 - 30	SPRING WASHER	56	9060220S - 65	TUBE
6	90602204 - 6	SHAFT	31	90602204 - 31	BOLT	57	9060220S - 66	WASHER
7	90602204 - 7	WHEEL	32	9060220S - 34	*O-RING	58	9060220S - 67	SPRING
8	9060220S - 9	WASHER	33	9060220S - 42	RAM	59	9060220S - 68	COTTER PIN
9	90602204 - 9	C-RING	34	9060220S - 43	*BACKUP RING	60	9060220S - 69	LOCK PIN
10	90602204 - 10	VALVE BLOCK	35	9060220S - 44	*PACKING	61	9060220S - 70	COTTER PIN
11	9060220S - 13	*O-RING	36	9060220S - 91	RAM GUIDE RING	62	9060220S - 57	SPRING PIN
12	9060220S - 14	SPRING WASHER	37	9060220S - 92	SNAP RING	63	9060220S - 96	RING
13	9060220S - 15	BOLT	38	9060220S - 45	STUFFING NUT	64	9060220S - 71	VALVE BODY
14	9060220S - 16	VALVE BALL	39	9060220S - 46	*O-RING	65	9060220S - 77	AIR VALVE
15	9060220S - 99	SCREW	40	9060220S - 47	*DUST SEAL	66	9060220S - 95	AIR HOSE
16	9060220S - 17	PIECE	41	9060220S - 48	SLEEVE	67	9060220S - 82	ELBOW
17	9060220S - 18	VALVE BALL	42	9060220S - 49	ADJUSTING SCREW	68	9060220S - 85	TUBE
18	9060220S - 19	VALVE SPRING-A	43	9060220S - 51	HANDLE SOCKET	69	9060220S - 94	SPRING HANGER
19	9060220S - 20	COPPER PACKING	44	90602204 - 44	UNIVERSAL JOINT	70	9060220S - 93	RETURN SPRING
20	90602204 - 20	BOLT	45	9060220S - 54	HI-TEN BOLT	101	90602204 - 101	JACK ASSY
21	9060220S - 22	VALVE BALL	46	9060220S - 55	WASHER	102	9060220S - 102	HANDLE ASSY
22	9060220S - 23	S.V.BALL SEAT	47	9060220S - 56	NUT	103	90602204 - 103	VALVE BLOCK ASSY
23	9060220S - 24	S.V.SPRING	48	90602204 - 48	SPRING WASHER	104	9060220S - 104	AIR PUMP ASSY
24	9060220S - 25	S.V. ADJUSTING SCREW	49	9060220S - 58	BOLT	105	9060220S - 105	AIR VALVE ASSY
25	90602204 - 25	*S.V.PACKING	50	9060220S - 59	HANDLE	106	90602204 - 106	REPAIR KITs (All *)
26	90602204 - 26	PUSH NUT	51	9060220S - 60	RELEASE ROD	AD	90602204 - AD	*ADAPTOR KIT <sub>1</sub>
			52	9060220S - 61	KNOB			<sub>1</sub> (Set of 2) consisting of 9060220S-AD1 and 9060220S-AD3.

### AIR PUMP

No.	Part #	Description	No.	Part #	Description	No.	Part #	Description
1	9060667 - 1	*NUT	12	9060667 - 12	SPRING	23	9060667 - 23	*PILOT PISTON CUSHION
2	9060667 - 2	BOTTOM CAP	13	9060667 - 13	*CUSHION	24	9060667 - 24	SCREW
3	9060667 - 3	ADJUST PIN	14	9060667 - 14	PISTON PLATE	25	9060667 - 26	HEX SCREW
4	9060667 - 4	CAP SCREW	15	9060667 - 15	*O-RING	26	9060667 - 27	SPRING
5	9060667 - 5	*SEAL RING	16	9060667 - 16	PISTON ROD	27	9060667 - 28S	CYLINDER SET
6	9060667 - 6	*BACKUP RING	17	9060667 - 17	*O-RING	28	90602204 - 71	ELBOW
7	9060667 - 7	*U-CUP RING	18	9060667 - 18	PISTON B	29	9060667 - 34	AIR HOSE
8	9060667 - 8	*O-RING	19	9060667 - 19	*PACKING	30	9060667 - 35S	AIR SWITCH SET
9	90602204 - 9	*CYLINDER BOLT	20	9060667 - 20	*O-RING	31	9060667 - 38	QUICK COUPLER
10	9060667 - 10	*SILENCER	21	9060667 - 21	VALVE	32	90602204 - RP	REPAIR KITS (ALL *)
11	9060667 - 11	U STYLE GASKET	22	9060667 - 22	PISTON A			

# Zinko Hydraulic Jack

## Model: ZATJ-22S-4v2

### Troubleshooting

PROBLEM	CAUSE	SOLUTION
Air Pump will not operate.	<ol style="list-style-type: none"> <li>1. Low air pressure.</li> <li>2. Air outlet is frozen.</li> <li>3. Packing defective, switching valve defective or dirty.</li> <li>4. Lack of oil.</li> </ol>	<ol style="list-style-type: none"> <li>1. Keep air pressure between 90-180 psi.</li> <li>2. Stop using and thaw frozen outlet.</li> <li>3. Contact repair station.</li> <li>4. Supply oil to air inlet or contact repair station.</li> </ol>
Air Pump acts, but ram will not rise.	<ol style="list-style-type: none"> <li>1. Release valve is open.</li> <li>2. Lack of hydraulic oil.</li> <li>3. Inlet or outlet valve dirty or defective, packing defective.</li> <li>4. Trapped air in oil hydraulic circuit of hydraulic valve.</li> </ol>	<ol style="list-style-type: none"> <li>1. Close valve clockwise.</li> <li>2. Supply oil.</li> <li>3. Contact repair station.</li> <li>4. Remove air.</li> </ol>
Ram will not rise to highest position.	<ol style="list-style-type: none"> <li>1. Lack of oil.</li> </ol>	<ol style="list-style-type: none"> <li>1. Supply oil.</li> </ol>
Ram lowers.	<ol style="list-style-type: none"> <li>1. Release valve is not securely closed.</li> <li>2. Outlet valve dirty or defective, packing defective.</li> </ol>	<ol style="list-style-type: none"> <li>1. Close valve clockwise.</li> <li>2. Contact repair station.</li> </ol>
Ram rises slowly.	<ol style="list-style-type: none"> <li>1. Filler is loaded.</li> <li>2. Air pump packing defective.</li> <li>3. Valve not properly opened or closed.</li> </ol>	Contact repair station.
Oil blowing from air pump.	<ol style="list-style-type: none"> <li>1. Packing defective.</li> </ol>	Contact repair station.
Auxiliary screw or ram not lowering completely.	<ol style="list-style-type: none"> <li>1. Deformation due to overloading.</li> </ol>	Contact repair station.

If the above procedures do not correct the problem, contact your nearest **ZINKO** service facility. When submitting any jack or equipment to be repaired, be sure to state the nature of the problem and indicate whether an estimate of the repair cost is needed.



## ZINKO HYDRAULIC JACK

PO Box 4903, Ontario, CA 91761

Toll Free: 1-800-579-8088

[www.zinkojack.com](http://www.zinkojack.com)

Phone: (909) 230-4100

Fax: (909) 230-4137