



# Portable Electric Pump

**Model: ZPE-65SVG Series**  
**Max. Operates: Up to 10,000 psi**  
**Power By: 0.87 HP**



**ZPE-65SVG-7L**

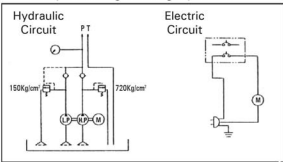
### Usage:

The ZPE-65SVG series has been developed for those looking for higher performance from a portable pump. High fluid output makes this pump the perfect option for jobs that require fast cycle times.

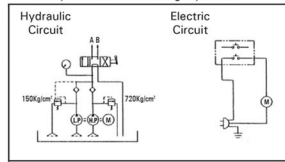
### Special Features:

1. These lightweight and portable pumps feature a 2-stage operation and high performance electric motor combined to provide excellent flow rates.
2. Manufactured for maximum durability pump utilizes a lightweight aluminum alloy for the case.
3. All units are equipped with and ergonomic carry handle and two button remote pendant switch.
4. Standard size reservoir holds 0.8 gallons of oil with 0.53 gallons of usable oil. Larger size reservoir available on all models that holds 1.3 gallons of oil with 1.05 gallons of usable oil.
5. Many options can configure unit to any application includes adjustable pressure regulator, pressure switch, various manual and solenoid valves.

*Pumps For Single-Acting Cylinders*



*Pumps For Double-Acting Cylinders*



Model Number	Motor (50/60 Hz)				Performance				Reservoir		Weight (lbs)
	Type	AC (V)	Output (HP)	Revolution (rpm)	Max. Press (psi)		Output (in <sup>3</sup> /min.)		Capacity Gallons	Usable Gallons	
					2 <sup>nd</sup> Stage	1 <sup>st</sup> Stage	2 <sup>nd</sup> Stage	1 <sup>st</sup> Stage			
					High	Low	High	Low			
ZPE-65SVG	E	110/220	0.87	2,000	10,000	1,015	26	244	0.8	0.53	52

Use With	Model Number	Valve	
		Type	Function
Single Acting Cylinders	ZPE-65SVG-0	No Valve	P.T. Manifold, no valve.
	ZPE-65SVG-1	3 Way, 2 Position Manual	Pump is operated with single button. 3 Way valve offers Advance/Hold/Retract.
	ZPE-65SVG-3	Manual Needle Valve	Pump is operated with single button. Needle valve offers Advance/Hold Retract. Retract speed is controlled with the needle valve.
	ZPE-65SVG-2	2 Way Solenoid Normally Open	"Advance" with button depressed. Auto retract when button is released.
	ZPE-65SVG-4	2 Way Solenoid Normally Closed	"Advance" with top button. "Hold" when no buttons depressed. "Retract" when bottom button is depressed.
Double Acting Cylinders	ZPE-65SVG-7	4 Way, 3 Position Manual Valve	Pump is operated with single button. 4 Way valve offers Advance/Hold/Retracts.
	ZPE-65SVG-5	4 Way, 2 Position Solenoid Valve	"Advance" with top button. "Retract" with bottom button. No "Hold" function.
	ZPE-65SVG-8SP	4 Way, 3 Position Solenoid Valve	"Advance" with top button. "Retract" with bottom button. Hold function when no buttons depressed. -SP hold on "A" port only -WP hold on "A" and "B" port.
	ZPE-65SVG-8WP	Pilot operated check valve(s)	
	ZPE-65SVG-8R	4-Way, 3 Position Solenoid Valve Relief Valve(s)	"Advance" with top button. "Retract" with bottom button. Optional Pilot operated check valves for hold function. Single or double relief valves to control max psi.
	ZPE-65SVG-8A	4-Way, 3 Position Solenoid Valve	A model equipped with "A" port block solenoid valve.
ZPE-65SVG-8H		H model equipped with an open center solenoid valve. Advance/Hold/Retract.	