

HOFMANN® 

monty® **8800**



**ALL IN ONE
TIRE CHANGER**

PREMIUM TIRE CHANGER

monty® 8800

HIGH PRODUCTIVITY EASY TO USE LESS TECHNICIAN FATIGUE

The monty® 8800 is a leverless tire changer that features smartSpeed™ technology, integrated wheel lift, on-floor bead breaker, lower bead camera viewer, and quickLOK™ wheel clamping. It is the perfect solution for high-volume shops that are looking to increase performance, safety, and productivity.

The monty® 8800 all-in-one tire changer carries an exclusive set of standard accessories, including a reverse mount wheel kit and light truck kit, allowing shops to service a wider range of wheels.



QUICKLOK™

Fast and effortless automatic wheel clamping
Powerful, electromechanical clamping system
with no size restriction or need for protection.



LOWER BEAD CAMERA

Camera and monitor assist in controlling
operation on the lower bead.



OPTIONAL TOOL
STORAGE ACCESSORY



ON-FLOOR BEAD BREAKER

The fastest solution for soft sidewall tires.
Best tool to break the tire bead mounted on
steel rims.



monty® 8800

THE ULTIMATE IN PRODUCTIVITY
AND PERFORMANCE



POWERMONT™

The fast, innovative leverless mount/demount system that makes working with any type of tire easier.



DYNAMIC BEAD BREAKER

Ergonomic and easy-to-adjust system provides the best and easiest bead breaking procedure for UHP and Run Flat tires.



SMARTSPEED™

Continuously controls the mount/demount conditions in order to provide the optimum torque/speed combination to the motor.

PREMIUM TIRE CHANGER

STANDARD ACCESSORIES



EAR0304G16A
Lube Brush



EAR0408G33A
Plastic Tire Protector



EAR0358G85A
Bead Clamp



EAR0377G23A
Smart Bead
Spacer



8-03229A
7.5 lbs Lube
Bucket



EAK0317G32A
Cone Kit 42-85mm
(1) Steel Cone
(3) Plastic Protectors



EAR0378G36A
Bead Breaker
Tool



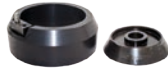
EAR0304G15A
Bead Breaker
Blade Protector



EAR0364G00A
Reverse Mount Wheel Kit
(5) 24mm cylindrical tip pins
(5) 24mm conical tip pins



EAR0440G50A
Set of 19mm Diameter Pins



EAR0349G06A
Light Truck
Wheel Kit



EAM0058G12A
Reduction Cone
(Ø64mm)



EAM0058G07A
Reduction Cone
(Ø78mm)



EAC0099G40A
Reduction Cone
(Ø120mm)



EAC0102G25A
Reduction Cone
(Ø145mm)



EAR0440G51A
Spacer for Bead
Breaker (20mm)



EAR0440G52A
Spacer for Bead
Breaker (50mm)



EAR0440G53A
Spacer for Bead
Breaker (70mm)



EAK0330G58A
powerMONT™
(10) Lower Tool Protector



EAK0341G32A
powerMONT™
(10) Upper Tool Protector

OPTIONAL ACCESSORY



EAR0481G79A
Tool Storage

TECHNICAL SPECIFICATIONS

Part Number	EEWH778AUB
Max. Tire Width	15" (380mm)
Max. Rim Width	13" (330mm)
Max. Wheel Diameter	47" (1200mm)
Reverse Wheels (Clearance/Flange Tool)	12" (305mm)
Wheel Lift Capacity	154 lbs. (70 kg)
Standard Power Supply	230V 1ph 50-60hz 16A
Air Pressure Required	116 - 174 psi (8-12 bar)
Footprint (W x D x H)	58" x 73" x 74" (1481 x 1863 x 1880mm)
Shipping Weight	1190 lbs. (540 kg)



US 800.251.4500

CANADA 800.267.2185



Snap-on® Total Shop Solutions offers a wide range of garage equipment solutions for workshops, garages, car dealers and tire shops, thanks to the specific solutions provided by its portfolio of premium brands. Hofmann® is a brand of TSS and is committed to product innovation and improvement. Therefore, specifications listed in this sell sheet may change without notice. ©2022 Snap-on Incorporated. Hofmann® is a trademark, registered in the United States and other countries, of Snap-on Incorporated. All rights reserved. All other marks are marks of their respective holders.
12/2022 ssw19017e

HOFMANN

HOFMANN-EQUIPMENT.COM