

**WHEEL BALANCER SYSTEM
ACCESSORIES CATALOG**

2020

HIGH PERFORMANCE WHEEL BALANCERS



TABLE OF CONTENTS

AUTOMOTIVE WHEEL BALANCING SYSTEM

ACCESSORIES AND KITS

» Precision Tooling Kits	4-5
» Medium Duty Kits	6-7
» Collets & Cone Kits	7
» Standard Tooling Kits	7-8
» Quick Nut Accessories	8-9
» Additional Accessories	9

MOTORCYCLE WHEEL BALANCING SYSTEM

ACCESSORIES AND KITS

» Motorcycle Balancer Accessories	10-11
-----------------------------------	-------

HEAVY-DUTY WHEEL BALANCING SYSTEM

ACCESSORIES AND KITS

» Heavy-Duty Balancer Accessories	12-13
-----------------------------------	-------

EAKO309J32B



FLANGE PLATE KIT WITH COLLETS

- ▶ **241E801-409 FLANGE PLATE #1**
 - » 4x 95.25mm (3.75"), 98mm, 100mm, 101.6mm (4"), 108mm, 114.3mm (4.5"), 170mm
 - » 7x 150mm
 - ▶ **251E801-409 FLANGE PLATE #2**
 - » 5x 98mm, 105mm, 108mm, 110mm, 115mm, 120.65mm (4.75"), 135mm, 154.95mm
 - ▶ **251E901-409 FLANGE PLATE #3**
 - » 5x 100mm, 112mm, 114.3mm (4.5"), 120mm, 127mm (5"), 130mm, 139.7mm (5.5"), 150mm, 165.1mm (6.5")
 - ▶ **231E111-409 FLANGE PLATE #4**
 - » 3x 98mm, 112mm, 114.3mm (4.5"), 115mm, 127mm (5"), 130mm, 132mm, 120mm
 - » 4x 165.1mm (6.5")
 - » 6x 135, 139.7mm (5.5")
 - ▶ **271-904-119 (5 PINS)**
 - » Rounded Pin
 - Head Ø 24.5mm
 - Length 90mm
 - ▶ **271-804-118 (6 PINS)**
 - » Short Tapered Pin
 - Head Ø 34.5mm
 - Length 80mm
 - ▶ **271-994-121 (7 PINS)**
 - » Long Tapered Pin
 - Head Ø 22.5mm
- Length 100mm
 - ▶ **150-400-111 COLLET #1**
 - » 52.5-61mm / 2.07-2.4"
 - ▶ **150-400-112 COLLET #2**
 - » 61.5-70mm / 2.42-2.76"
 - ▶ **150-400-113 COLLET #3**
 - » 67.5-76mm / 2.66-2.99"
 - ▶ **150-400-114 COLLET #4**
 - » 75-83mm / 2.95-3.27"
 - ▶ **150-400-115 COLLET #5**
 - » 82-90.5mm / 3.23-3.56"
 - ▶ **150-400-116 COLLET #6**
 - » 89-97.5mm / 3.5-3.84"
 - ▶ **150-400-117 COLLET #7**
 - » 94-103mm / 3.7-4.06"
 - ▶ **150-400-118 COLLET #8**
 - » 101-111mm / 3.98-4.37"
 - ▶ **150-400-119 COLLET #9**
 - » 112-121mm / 4.41-4.76"
 - ▶ **EAKO309J54A SPACER KIT**
 - ▶ **EAS2081J30AB STORAGE STAND**
 - ▶ **490-008-000 MEASURING TOOL**
 - ▶ **VID-20X-001 APPLICATION GUIDE**
- ▶ **150-400-123 OPTIONAL COLLET #10**
 - » 120-126mm / 4.72-4.96"

200-008-402



FLANGE PLATE SET

- ▶ **241E801-409 FLANGE PLATE #1**
 - » 4x 95.25mm (3.75"), 98mm, 100mm, 101.6mm (4"), 108mm, 114.3mm (4.5"), 170mm
 - » 7x 150mm
 - ▶ **251E801-409 FLANGE PLATE #2**
 - » 5x 98mm, 105mm, 108mm, 110mm, 115mm, 120.65mm (4.75"), 135mm, 154.95mm
 - ▶ **251E901-409 FLANGE PLATE #3**
 - » 5x 100mm, 112mm, 114.3mm (4.5"), 120mm, 127mm (5"), 130mm, 139.7mm (5.5"), 150mm, 165.1mm (6.5")
 - ▶ **231E111-409 FLANGE PLATE #4**
 - » 3x 98mm, 112mm, 114.3mm (4.5"), 115mm, 127mm (5"), 130mm, 132mm, 120mm
 - » 4x 165.1mm (6.5")
 - » 6x 135, 139.7mm (5.5")
- ▶ **271-904-119 (5 PINS)**
 - » Rounded Pin
 - Head Ø 24.5mm
 - Length 90mm
 - ▶ **271-804-118 (6 PINS)**
 - » Short Tapered Pin
 - Head Ø 34.5mm
 - Length 80mm
 - ▶ **271-994-121 (7 PINS)**
 - » Long Tapered Pin
 - Head Ø 22.5mm
 - Length 100mm
 - ▶ **EAKO309J54A SPACER KIT**
 - ▶ **EAS2081J30AB STORAGE STAND**
 - ▶ **490-008-000 MEASURING TOOL**
 - ▶ **VID-20X-001 APPLICATION GUIDE**

POWER CLAMP SPEED PLATE KIT WITH COLLETS

EAK0309J33B

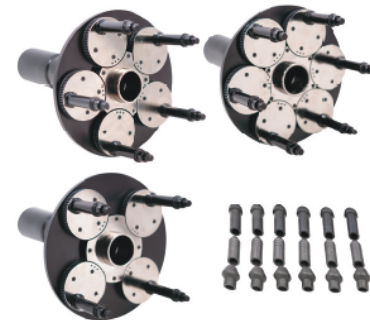
- ▶ **E404-818-08 SPEED PLATE**
 - » 4 & 8 Lug Wheels
 - PDC Range: 92.25–180mm
- ▶ **E405-818-08 SPEED PLATE**
 - » 5 Lug Wheels
 - PDC Range: 92.25–180mm
- ▶ **E406-818-08 SPEED PLATE**
 - » 6 Lug Wheels
 - PDC Range: 92.25–180mm
- ▶ **E465-025-11 (6 STUDS)**
 - » Short Cone Seat Stud
 - Head Ø 28mm
 - Body Length 25mm
- ▶ **E465-040-15 (6 STUDS)**
 - » Narrow Cone Seat Stud
 - Head Ø 19mm
 - Body Length 40mm
- ▶ **E465-050-14 (6 STUDS)**
 - » Ball Seat Stud
 - Head Ø 24.5mm
 - Body Length 50mm
- ▶ **150-400-111 COLLET #1**
 - » 52.5–61mm / 2.07–2.4"
- ▶ **150-400-112 COLLET #2**
 - » 61.5–70mm / 2.42–2.76"
- ▶ **150-400-113 COLLET #3**
 - » 67.5–76mm / 2.66–2.99"
- ▶ **150-400-114 COLLET #4**
 - » 75–83mm / 2.95–3.27"
- ▶ **150-400-115 COLLET #5**
 - » 82–90.5mm / 3.23–3.56"
- ▶ **150-400-116 COLLET #6**
 - » 89–97.5mm / 3.5–3.84"
- ▶ **150-400-117 COLLET #7**
 - » 94–103mm / 3.7–4.06"
- ▶ **150-400-118 COLLET #8**
 - » 101–111mm / 3.98–4.37"
- ▶ **150-400-119 COLLET #9**
 - » 112–121mm / 4.41–4.76"
- ▶ **EAK0309J54A SPACER KIT**
- ▶ **EAS2081J30AB STORAGE STAND**
- ▶ **150-400-123 OPTIONAL COLLET #10**
 - » 120–126mm / 4.72–4.96"



POWER CLAMP SPEED PLATE KIT

EAK0309J38C

- ▶ **E404-818-08 SPEED PLATE**
 - » 4 & 8 Lug Wheels
 - PDC Range: 92.25–180mm
- ▶ **E405-818-08 SPEED PLATE**
 - » 5 Lug Wheels
 - PDC Range: 92.25–180mm
- ▶ **E406-818-08 SPEED PLATE**
 - » 6 Lug Wheels
 - PDC Range: 92.25–180mm
- ▶ **E465-025-11 (6 STUDS)**
 - » Short Cone Seat Stud
 - Head Ø 28mm
 - Body Length 25mm
- ▶ **E465-040-15 (6 STUDS)**
 - » Narrow Cone Seat Stud
 - Head Ø 19mm
 - Body Length 40mm
- ▶ **E465-050-14 (6 STUDS)**
 - » Ball Seat Stud
 - Head Ø 24.5mm
 - Body Length 50mm



SPEED PLATE KIT

EAK0309J16C

- ▶ **E404-400-08 SPEED PLATE**
 - » 4 & 8 Lug Wheels
 - PCD Range: 92.25–180mm
- ▶ **E405-400-08 SPEED PLATE**
 - » 5 Lug Wheels
 - PCD Range: 92.25–180mm
- ▶ **E406-400-08 SPEED PLATE**
 - » 6 Lug Wheels
 - PCD Range: 92.25–180mm
- ▶ **E465-025-11 (6 STUDS)**
 - » Short Cone Seat Stud
 - Head Ø 28mm
 - Body Length 25mm
- ▶ **E465-040-15 (6 STUDS)**
 - » Narrow Cone Seat Stud
 - Head Ø 19mm
 - Body Length 40mm
- ▶ **E465-050-14 (6 STUDS)**
 - » Ball Seat Stud
 - Head Ø 24.5mm
 - Body Length 50mm



EAK0309J41B



POWER CLAMP MEDIUM DUTY KIT

- ▶ **700-816-034 PIN PLATE**
 - » 4x 165.1mm (6.6"), 170mm, 180mm, 200mm, 210mm, 225mm
 - » 5x 184.15mm (7.25"), 225mm
- ▶ **160-400-083 HUB PILOT DISK #15**
 - » GM/Ford
 - 4.87-4.90"/5.24-5.26"
 - 5.44-5.47"/6.06-6.09"
- ▶ **160-400-084 HUB PILOT DISK #16**
 - » Dodge/Sprinter/Isuzu/Ford (DRW)
 - 5.57-5.62"/6.23-6.35"
 - 6.44-6.52"/6.68-6.74"
- ▶ **160-400-082 HUB PILOT DISK #17**
 - » 3/4 or 1-Ton:
 - GM/Dodge/Ford/Nissan/Ram
 - 4.55-4.58"/4.59-4.62"
 - 4.76-4.79"/4.86-4.94"
- ▶ **EAA0277059A LARGE SPACER DISK**
- ▶ **700-008-035 (5 PINS)**
 - » Conical Head
 - Head Ø 24.5mm
 - Length 66mm

EAK0309J40B



MEDIUM DUTY KIT

- ▶ **700-400-034 PIN PLATE**
 - » 4x 165.1mm (6.6"), 170mm, 180mm, 200mm, 210mm, 225mm
 - » 5x 184.15mm (7.25"), 225mm
- ▶ **160-400-083 HUB PILOT DISK #15**
 - » GM/Ford
 - 4.87-4.90"/5.24-5.26"
 - 5.44-5.47"/6.06-6.09"
- ▶ **160-400-084 HUB PILOT DISK #16**
 - » Dodge/Sprinter/Isuzu/Ford (DRW)
 - 5.57-5.62"/6.23-6.35"
 - 6.44-6.52"/6.68-6.74"
- ▶ **160-400-082 HUB PILOT DISK #17**
 - » 3/4 or 1-Ton:
 - GM/Dodge/Ford/Nissan/Ram
 - 4.55-4.58"/4.59-4.62"
 - 4.76-4.79"/4.86-4.94"
- ▶ **EAA0277059A LARGE SPACER DISK**
- ▶ **700-008-035 (5 PINS)**
 - » Conical Head
 - Head Ø 24.5mm
 - Length 66mm

700-008-035



SHORT SPARE PIN

- ▶ **700-008-035 66MM PIN**
 - » Conical Head
 - Head Ø 24.5mm
 - Length 66mm

700-008-036



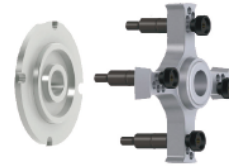
LONG SPARE PIN

- ▶ **700-008-036 90MM PIN**
 - » Conical Head
 - Head Ø 24.5mm
 - Length 90mm

GMC SIERRA CENTERING KIT

280 400 113

- ▶ 160-400-067 CENTERING DISK
 - » Hub pilot disk double-sided
 - Ø 154mm / Ø 124mm
- ▶ 700E 400 019 4-ARM LUG ADAPTER (Ø 170/180/200/210/225)
- ▶ 700 008 028 CENTERING BOLT
- ▶ 400E 008 027 KNURLED NUT M10



LIGHT TRUCK ADAPTOR KIT

280 400 075

- ▶ 160-400-056 CENTERING DISK
 - » Ø 161mm
- ▶ 700E 400 018 3-ARM STAR
- ▶ 700E 008 025 3X STUDS DODGE/SPRINTER
- ▶ 700E 008 013 3X STUDS FAR EAST
- ▶ 700E 008 013 3X STUDS EUROPE
- ▶ 840E 100 001 3X KNURLED NUT



STANDARD TOOLING KIT

EAK0309J31B

- ▶ 150-400-111 COLLET #1
 - » 52.5–61mm / 2.07–2.4"
- ▶ 150-400-112 COLLET #2
 - » 61.5–70mm / 2.42–2.76"
- ▶ 150-400-113 COLLET #3
 - » 67.5–76mm / 2.66–2.99"
- ▶ 150-400-114 COLLET #4
 - » 75–83mm / 2.95–3.27"
- ▶ 150-400-115 COLLET #5
 - » 82–90.5mm / 3.23–3.56"
- ▶ 150-400-116 COLLET #6
 - » 89–97.5mm / 3.5–3.84"
- ▶ 150-400-117 COLLET #7
 - » 94–103mm / 3.7–4.06"
- ▶ 150-400-118 COLLET #8
 - » 101–111mm / 3.98–4.37"
- ▶ 150-400-119 COLLET #9
 - » 112–121mm / 4.41–4.76"
- ▶ EAK0309J54A SPACER KIT
- ▶ EAA0307G82A LARGE PRESSURE CUP
- ▶ EAS2081J30AB STORAGE STAND
- ▶ 150-400-123 OPTIONAL COLLET #10
 - » 120–126mm / 4.72–4.96"



NINE COLLET SET

EAK0315G93A

- ▶ 150-400-111 COLLET #1
 - » 52.5–61mm / 2.07–2.4"
- ▶ 150-400-112 COLLET #2
 - » 61.5–70mm / 2.42–2.76"
- ▶ 150-400-113 COLLET #3
 - » 67.5–76mm / 2.66–2.99"
- ▶ 150-400-114 COLLET #4
 - » 75–83mm / 2.95–3.27"
- ▶ 150-400-115 COLLET #5
 - » 82–90.5mm / 3.23–3.56"
- ▶ 150-400-116 COLLET #6
 - » 89–97.5mm / 3.5–3.84"
- ▶ 150-400-117 COLLET #7
 - » 94–103mm / 3.7–4.06"
- ▶ 150-400-118 COLLET #8
 - » 101–111mm / 3.98–4.37"
- ▶ 150-400-119 COLLET #9
 - » 112–121mm / 4.41–4.76"
- ▶ 150-400-123 OPTIONAL COLLET #10
 - » 120–126mm / 4.72–4.96"



BASIC LIGHT TRUCK CONE KIT

8100068

- ▶ EAM0050J23A LIGHT TRUCK CONE
 - » 4.25–6.85" / 107.19–174mm
- ▶ EAA0277D59A LARGE SPACER DISC
- ▶ EAC0058D68A SPACER RING



EAK0221J31A



SEVEN CONE SET

- ▶ EAM0003J64A CONE #1
 - » 1.70–2.23" / 43.18–56.64mm
- ▶ EAM0003J65A CONE #2
 - » 2.03–3.17" / 51.56–80.52mm
- ▶ EAM0003J66A CONE #3
 - » 2.38–3.42" / 60.45–86.87mm
- ▶ EAM0003J67A CONE #4
 - » 2.74–3.78" / 69.60–96.01mm
- ▶ EAM0003J68A CONE #5
 - » 3.08–4.13" / 78.23–104.9mm
- ▶ EAM0003J69A CONE #6
 - » 3.42–5.24" / 86.87–133.1mm
- ▶ EAM0003J70A CONE #7
 - » 4.22–6.14" / 107.19–155.96mm

EAK0309J28A



FOUR CONE SET

- ▶ EAM0003J08A TRUCK CONE
 - » 3.3–5.2" / 83.82–132.08mm
- ▶ EAM0003J07A LARGE CONE
 - » 2.8–3.9" / 71.12–99.06mm
- ▶ EAM0003J06A MEDIUM CONE
 - » 2.2–2.92" / 55.88–74.17mm
- ▶ EAM0003J05A SMALL CONE
 - » 2.1–2.5" / 53.34–63.5mm

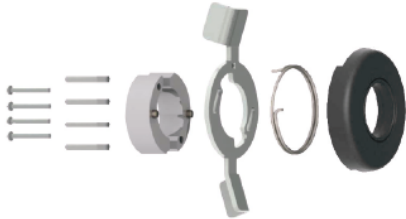
124-405-006



QUICK-NUT KIT

- ▶ 140-405-412 QUICK-NUT
 - » 40mm shaft
- ▶ 190-008-005 PRESSURE CUP
- ▶ 190-008-002 PROTECTIVE RING
- ▶ 190-008-027 PRESSURE RING

140E-405-310



QUICK-NUT REPAIR KIT

- ▶ 140E-405-310 REPAIR KIT

For use with Quick-Nut 140-405-412

EAA0263G66A



QUICK-NUT

- ▶ EAA0263G66A QUICK-NUT
 - » 40mm shaft

EAC0058D08A



QUICK-NUT PRESSURE DISC

- ▶ EAC0058D08A PRESSURE DISC

For use with Quick-Nut EAA0263G66A

QUICK-NUT REPLACEMENT HANDLE

ST0027008

- ▶ ST0027008 REPLACEMENT HANDLE

For use with Quick-Nut EAA0263G66A



QUICK-NUT PRESSURE CUPS

- ▶ 8-02040A2 PRESSURE CUP
- ▶ 001 1041 0000 REPLACEMENT RING

For use with Quick-Nut 140405412

- ▶ EAC0058D07A PRESSURE CUP
- ▶ EAC0058D15A REPLACEMENT RING

For use with Quick-Nut EAA0263G66A

- ▶ EAA0307G82A CLAMPING PLATE



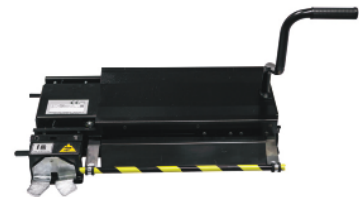
UNIVERSAL WHEEL LIFT

EAK0306G66A

- ▶ EAK0306G66A UNIVERSAL WHEEL LIFT

- » Pneumatic
- » Foot operated control
- » Max weight 153lbs
- » Max lift 20"
- » WxDxH: 49"x 25"x 38"

Not for integrated hood balancers or heavy-duty balancers



RIM WIDTH CALIPER

EAA0247G21A

- ▶ EAA0247G21A RIM WIDTH CALIPER

- » Manual measurement tool



WEIGHT PLIERS

000 5883 9000

- ▶ 000 5883 9000 WEIGHT PLIERS



BLACK STORAGE STAND

EAS2011J30AB

- ▶ EAS2011J30AB BLACK STORAGE STAND



EAA0260D80A



MOTORCYCLE ADAPTER KIT

- ▶ **EAA0260D80A**
 - » Basic Adapter
 - ▶ **ERM0005D48A**
 - » 14mm Adapter Shaft
 - ▶ **ERM0005D79A**
 - » Knurled Nut M1 4
 - ▶ **ERM0005D63A (4PCS)**
 - » Fastening Nuts M6
 - ▶ **ERM0005D62A**
 - » Gauge Extension
 - ▶ **8-01550A**
 - » Arbor Wrench
 - ▶ **1-01805A (2PCS)**
 - » Allen Screws
- ▶ **ERM0005D83A**
 - » 25x1 4x40mm Bushing (ODxIDxL)
 - ▶ **ERM0005D80A (2PCS)**
 - » 15x1 7x25mm BMW Bushings
 - ▶ **ERM0005D77A**
 - » 20x1 4x40mm Bushing
 - ▶ **ERM0005D78A**
 - » 17x1 4x40mm Bushing
 - ▶ **ERM0005D82A (2PCS)**
 - » Centering Cones
 - ▶ **ERM0005D76A (2PCS)**
 - » BMW Cones

EAA0277D07A



SUZUKI, NTV & MOTO GUZZI V11

- ▶ **EAA0277D07A CONE SET**
 - » Suzuki, NTV & Moto Guzzi V11

For use with 14mm shaft

For use with EAA0260D80A

EAA0277D11A



APRILLA REAR MONO-LEVER

- ▶ **EAA0277D11A MOTORCYCLE ACCESSORY**
 - » Aprilla Rear Mono-Lever

For use with EAA0260D80A

EAA0260D16A



BMW MONO-LEVER

- ▶ **EAA0260D16A MOTORCYCLE ACCESSORY**
 - » BMW Mono-Lever

For use with EAA0260D80A

EAA0277D09A



HONDA OR YAMAHA MONO-LEVER

- ▶ **EAA0277D09A MOTORCYCLE ACCESSORY**
 - » Honda or Yamaha Mono-Lever

For use with EAA0260D80A

10MM SHAFT ADAPTER

EAA0277D03A

- ▶ **EAA0277D03A MOTORCYCLE ACCESSORY**
 - » 10mm Shaft Adapter
 - Shaft Length: 205mm



For use with EAA0260D80A

EXTENDED SHAFT ADAPTER

EAA0277D29A

- ▶ **EAA0277D29A MOTORCYCLE ACCESSORY**
 - » Extended Shaft Adapter
 - Shaft Length: 284.5mm
 - Shaft Diameter: 14mm



For use with EAA0260D80A

3/4" HARLEY DAVIDSON SHAFT ADAPTER

EAA0277D22A

- ▶ **EAA0277D22A MOTORCYCLE ACCESSORY**
 - » 3/4" Harley Davidson Shaft Adapter w/1" Bushing
 - Shaft Length: 210mm



For use with EAA0260D80A

DUCATI OR TRIUMPH MONO-LEVER ADAPTER

EAA0277D20A

- ▶ **EAA0277D20A MOTORCYCLE ACCESSORY**
 - » Ducati/Triumph Wheel Shaft Adapter



Must use with 3/4" Shaft Adapter EAA0277D22A

For use with EAA0260D80A

HARLEY DAVIDSON SHAFT ADAPTER

2005540

- ▶ **2005540 MOTORCYCLE ACCESSORY**
 - » Shaft Ø 3/4"
 - » Bushing Ø 1" / 25mm
 - » Shaft Length 404mm



For use with EAA0260D80A

EAA0346J58A

HEAVY-DUTY WHEEL LIFT



- ▶ **EAA0346J58A HEAVY-DUTY WHEEL LIFT**
 - » Pneumatic
 - » Hand operated control
 - » Max weight 551lbs
 - » Max lift 18"
 - » WxDxH: 41 x 23"x 21"

For heavy-duty balancers only

EAA0307G80A

4 & 5-STAR CENTERING ARMS KIT



- ▶ **PROFESSIONAL 4-STAR CENTERING ARM**
 - » Fits 4x275/285mm
- ▶ **PROFESSIONAL 5-STAR CENTERING ARM**
 - » Fits 10x335mm
 - » 10x285.75mm
 - » 10x225.25mm

1921003

REPLACEMENT TRUCK STUD



- ▶ **1921003 TRUCK STUD**
 - » Fits Professional 4 & 5-Star Centering Arms
 - » Includes Knurled Nut
 - » Length: 55mm
 - » Diameter: 17-33.5mm

00112105000

REPLACEMENT TRUCK STUD



- ▶ **00112105000 TRUCK STUD**
 - » Fits Professional 4 & 5-Star Centering Arms
 - » Includes Knurled Nut
 - » Length 58mm
 - » Diameter 17-38mm

00112106000

REPLACEMENT KNURLED NUT



- ▶ **00112106000 KNURLED NUT**
 - » Fits Truck Studs 1921003 / 00112105000

SPARE PIN AND NUT**EAK0237J23A**

- ▶ **700-008-034 PIN**
 - » Style - Wide Conical Head
 - Head \varnothing 40.0mm
 - Length 33.5mm

**HEAVY-DUTY ACCESSORIES**

- ▶ **EAM0050J24A CENTERING CONE**
 - » Bushing 8-9" (203-228mm)



- ▶ **8-00391A RIM WIDTH CALIPER**
 - » For truck wheels



- ▶ **EAA0260D32A HEAVY-DUTY SPACER**



- ▶ **00112292000 CENTERING DISC**
 - » 8.69" (220.8mm)





www.hofmann-equipment.com