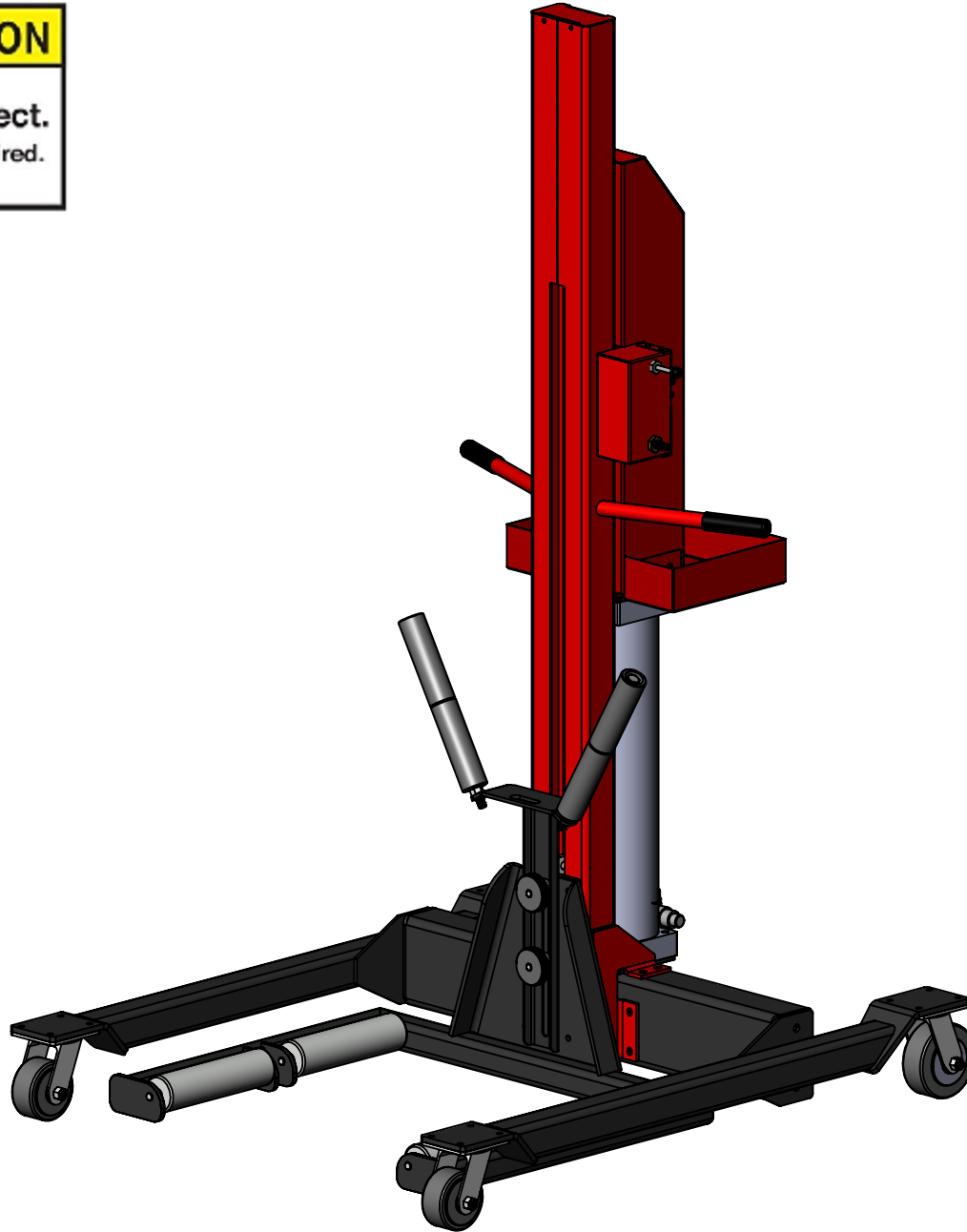




CAUTION

Heavy object.
Team lift required.



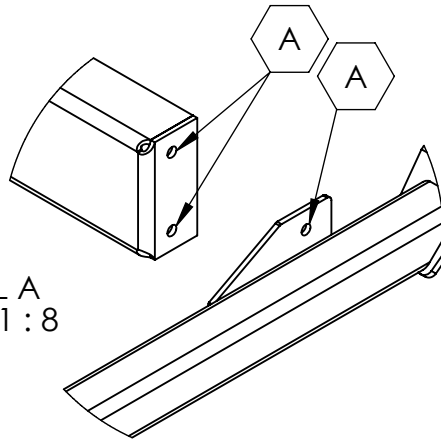
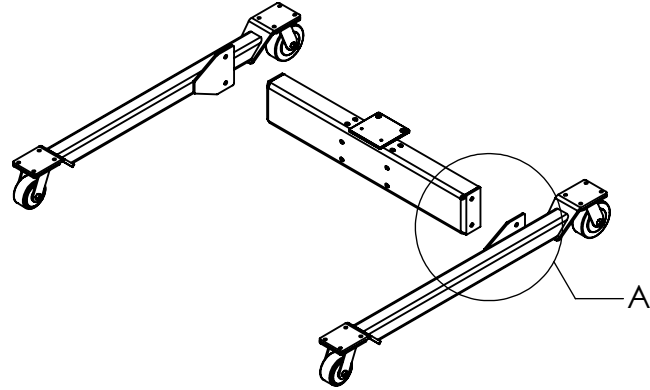
LM-500 - CUSTOMER ASSEMBLY

PROPRIETARY AND CONFIDENTIAL

THE INFORMATION CONTAINED IN THIS
DRAWING IS THE SOLE PROPERTY OF
QSP. ANY REPRODUCTION IN PART OR AS
A WHOLE WITHOUT THE WRITTEN
PERMISSION OF QSP IS PROHIBITED.

STEP

1



DETAIL A
SCALE 1 : 8

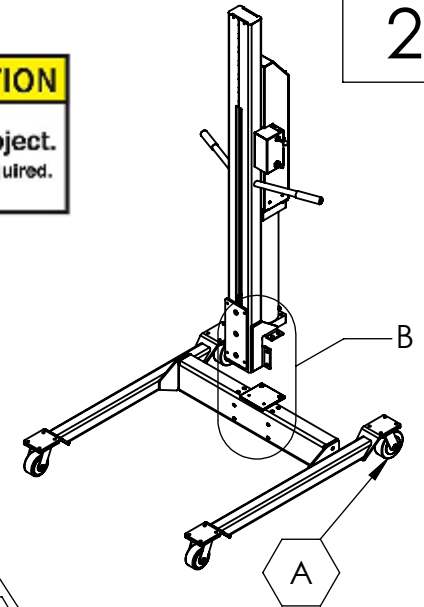
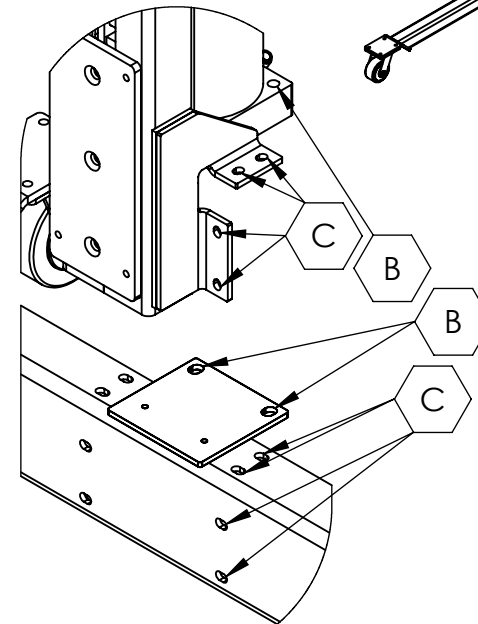
1. USE (4) 1/2-13 X 1" BOLTS WITH FLAT WASHERS AND NYLOCK NUTS TO SECURE OUTRIGGERS TO CROSS-MEMBER [A]

STEP

2



DETAIL B
SCALE 1 : 8



1. LOCK REAR CASTERS [A]
2. USE (8) 3/8-16 X 1.5" BOLTS WITH FLAT WASHERS AND NYLOCK NUTS TO SECURE COLUMN TO CROSS MEMBER [B]
3. USE (2) M12 X 1.75 X 20mm SOCKET HEAD SCREWS TO SECURE CYLINDER TO CROSS MEMBER [C]



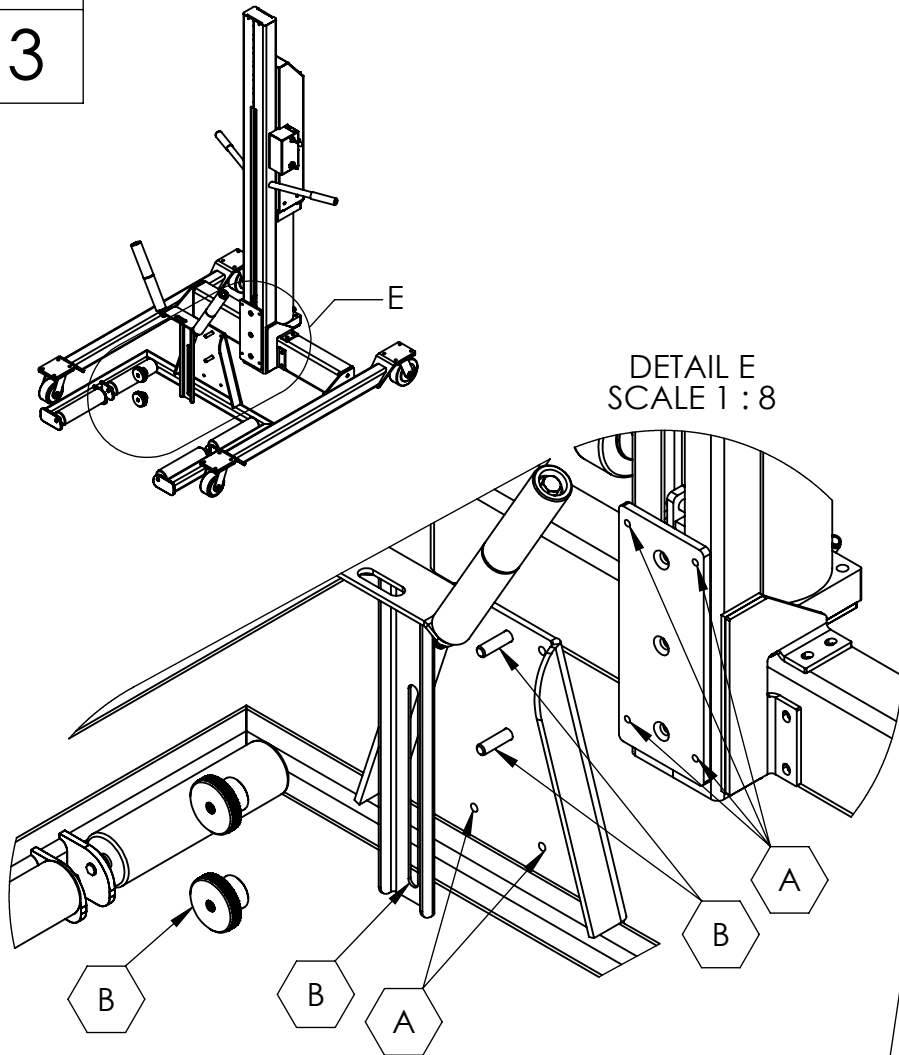
LM-500 - CUSTOMER ASSEMBLY

PROPRIETARY AND CONFIDENTIAL

THE INFORMATION CONTAINED IN THIS DRAWING IS THE SOLE PROPERTY OF QSP. ANY REPRODUCTION IN PART OR AS A WHOLE WITHOUT THE WRITTEN PERMISSION OF QSP IS PROHIBITED.

STEP

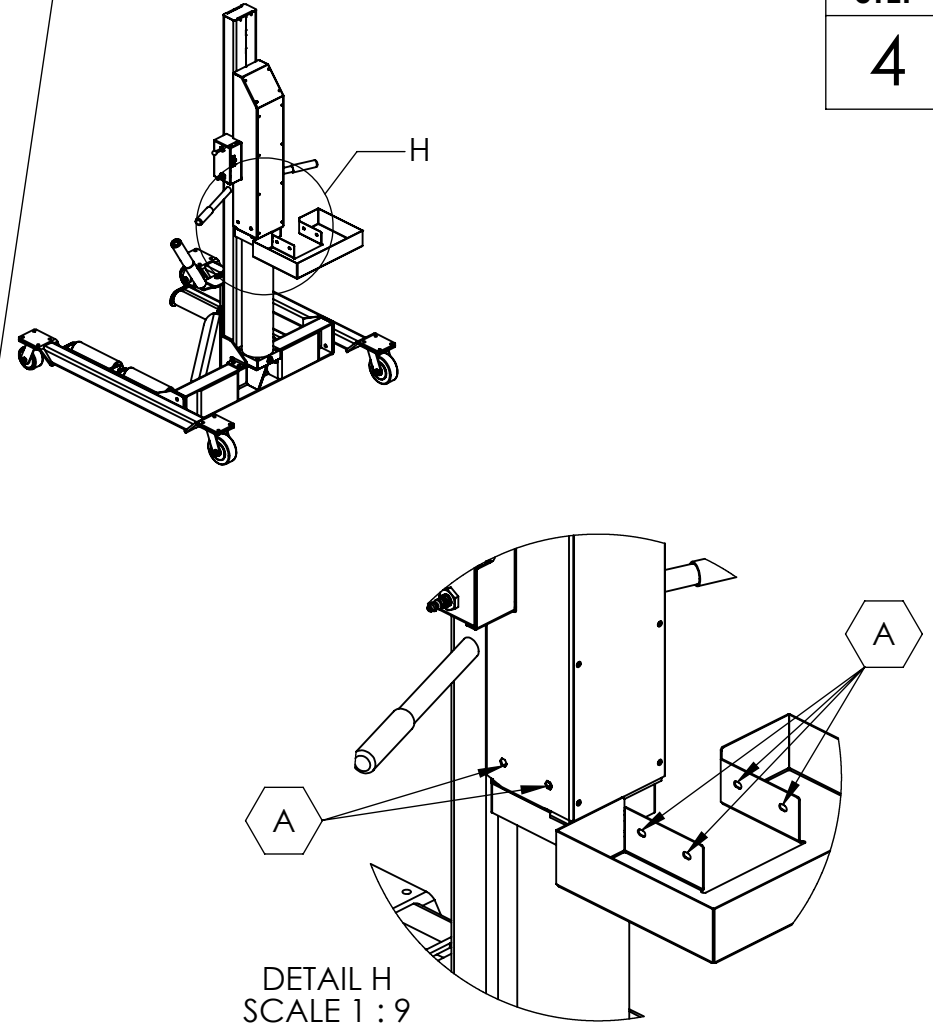
3



1. USE (4) 3/8-16 X 3/4" BOLTS TO SECURE FORK ASSEMBLY TO SUPPORT COLUMN [A]
2. FASTEN TIRE REST ASSEMBLY TO FORK ASSEMBLY USING STUDS IN FORK ASSEMBLY AND KNOB FOR TIRE SUPPORT [B]

STEP

4



1. USE (4) 1/4-20 X 5/8" BUTTON HEAD CAP SCREWS WITH FLAT WASHERS TO SECURE THE TOOL TRAY TO THE UPRIGHT COLUMN AS SHOWN [A]



LM-500 - CUSTOMER ASSEMBLY

PROPRIETARY AND CONFIDENTIAL

THE INFORMATION CONTAINED IN THIS DRAWING IS THE SOLE PROPERTY OF QSP. ANY REPRODUCTION IN PART OR AS A WHOLE WITHOUT THE WRITTEN PERMISSION OF QSP IS PROHIBITED.