

# POWER JACKS

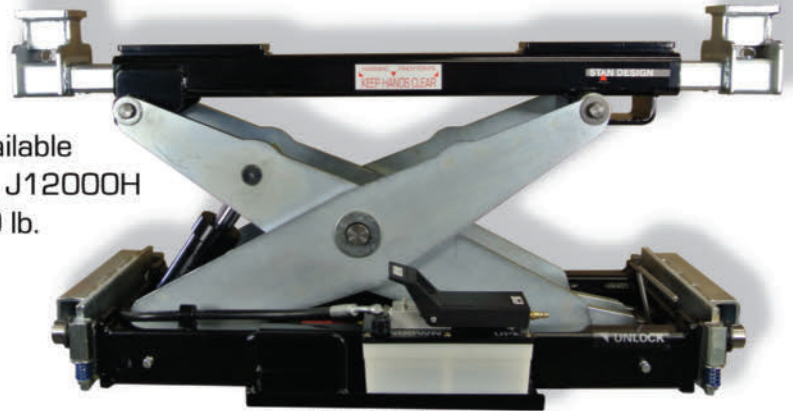
standard features include:  
heavy-duty hydraulics  
dual multi-level safety  
dual hand controls  
stackable adapters  
extended lift height  
smooth operation  
easy rolling action  
convenient pull handle  
self retracting coil hose  
high gloss paint  
zinc plated components  
and accessories

A FULL OFFERING OF  
HEAVY-DUTY JACKS  
12K/15K/18K/25K/35K/50K  
CAPACITY ROLLING JACKS

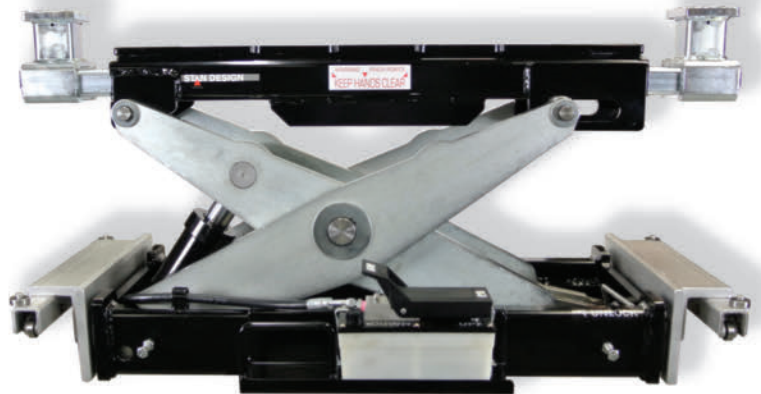
POWER JACK  
lifting adapters  
are stackable  
and can be used on the top beam  
for narrow pick up points



also available  
MODEL J12000H  
12,000 lb.



J15000H shown 15,000 lb.  
Designed to fit all lifts and pits  
fully adjustable



J25000H shown 25,000 lb.  
Designed to fit all lifts and pits  
fully adjustable

also available  
MODEL J50000H  
50,000 lb.



J35000H shown 35,000 lb.  
with optional all-weather shield  
Designed to fit all lifts and pits  
fully adjustable

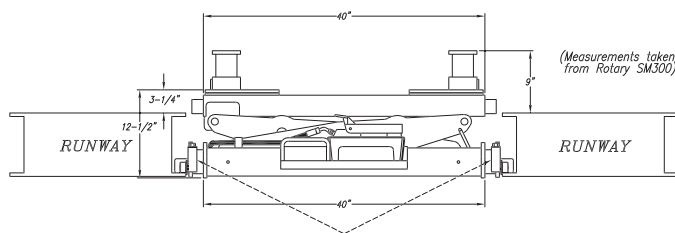


# UNIVERSAL ROLLING BRIDGE JACKS

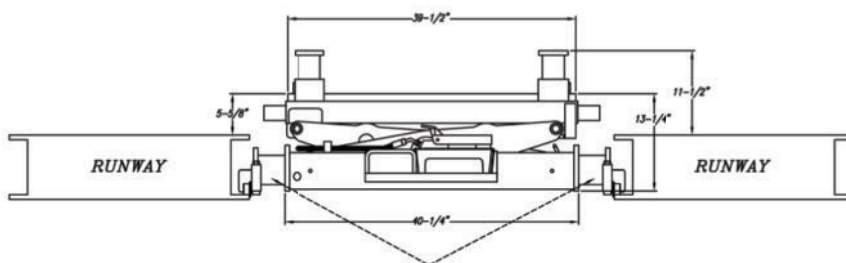
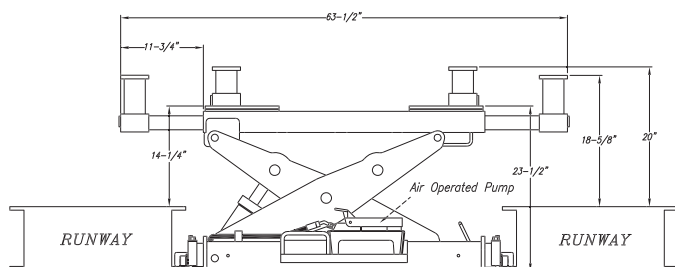
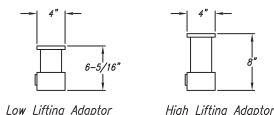
## rolling jack specifications

**STAN DESIGN**

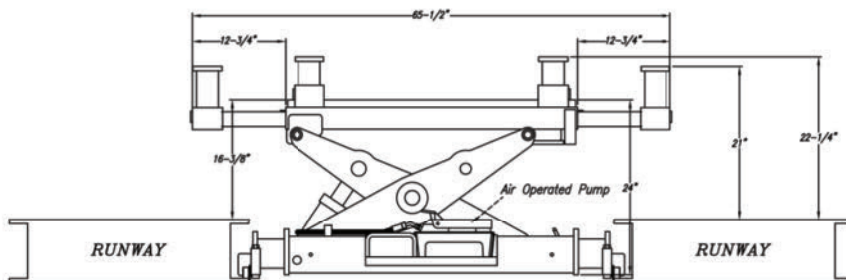
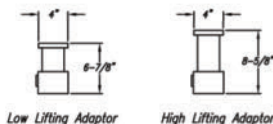
[www.standesigninc.com](http://www.standesigninc.com)



Wheel Assemblies  
(Adjustable: Fits between 42.25"-53.50" between opening runways)



Wheel Assemblies  
(Adjustable: Fits between 42.25"-53.50" between opening runways)



(866) 782-6529