

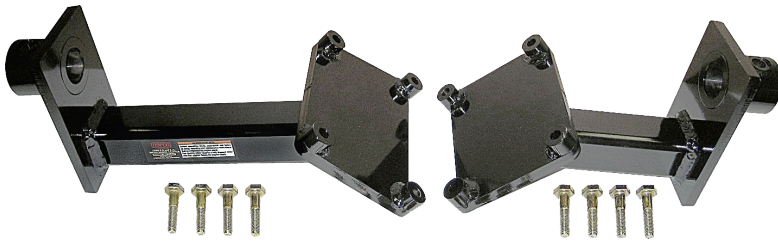


PROFESSIONAL LIFTING EQUIPMENT

WHEN SAFETY DEPENDS ON PERFORMANCE!

78200A 2,000 Lbs. Capacity Engine Stand with

78201 Ford 6.0L and 6.4L Engine Mounting Adapter



INTENDED USE

A twin-post design capable of handling large automotive engines and small diesel engines ranging between 1,250 and 2,000 pounds.

FEATURES

- Two swivel caster wheels and two rigid wheels provide positive steering and maneuverability.
- **Wheels with polyurethane tread protect epoxy-coated and tile floors.**
- Includes two universal mounting plates, rotating shaft, eight fully adjustable arms and all the related mounting hardware.
- Rotating shaft with mounting plate telescopes inside the post receiver for fine adjustment when mounting ends or sides of engines. Mounting plates can be adjusted 36-1/4" apart.