

G205



Made in USA

OWNERS MANUAL



INSTRUCTIONS

This manual contains important information concerning the installation and operation of the gun washers listed above. **Read manual thoroughly and keep for future reference**



Herkules Patent Numbers

These products have patent protection under one or more of the following patent numbers:

9422142, 8733508, 8714524, 866247, 8052120, 7070167, 5485860, 5193561, 5174317, 4960142, 4793369 and Patents Pending

Website: www.herkules.us
E-mail: info@herkules.us

Herkules Equipment Corporation
2760 Ridgeway Court
Walled Lake, MI 48390-1662 USA

Toll Free: 800-444-4351
Phone: 248-960-7100
Fax: 248 960-7109

Table of Contents

Warranty	3
Model Information	4
Warnings	5 - 6
Installation Instructions	7
Operation	8 - 9
Preventive Maintenance	10
Troubleshooting	11
Drawings with Part Lists	12 - 20
G205 Schematic	21

Herkules Equipment Corporation

A U.S.-based manufacturer, Herkules Equipment Corporation offers a diverse line of products that support multiple industries by improving efficiency, productivity, ergonomics, comfort, and safety in the work environment. The company consists of the three product lines: Herkules, Enkon and BossLifts.

Since 1985, Herkules has designed, engineered and manufactured quality products at our Walled Lake, Michigan facility. Our company supports our products after delivery, with U.S. based customer service, and replacement parts, enabling our customers to proceed with confidence.

To learn more about Herkules, visit <http://herkules.us>. Contact us at info@herkules.us with any questions or concerns.

Thank you for purchasing a Herkules product!

Warranty

IMPORTANT NOTICE: if you have a problem with your Herkules product,

DO NOT RETURN TO PLACE OF PURCHASE

Contact Herkules: by phone 1-800-444-4351; by email, info@herkules.us; or on the web at herkules.us/contact-us.

At Herkules we take great pride in the construction of our American-made products, and we stand behind their reliability. Our limited liability warranty coverage for Paint Gun Washers warrants the unit for a period of 12 months. Washer pumps have a separate warranty; the Herkules 338 pump is protected for a period of 2 years from the date of purchase. All other pumps, including rinse pumps, are warranted for 12 months.

This warranty does not apply to equipment damaged from accident, abuse, overload, misuse, negligence, improper installation, abrasive or corrosive materials, or shipping damage.

In the event of product failure, the defective item must be returned, freight prepaid, to the Herkules manufacturing plant for repair or replacement. If repairs are required, Herkules will not be liable for these repairs to take place in the field regardless of the application. Proof of purchase and date of purchase must be confirmed. An RGA* (Returned Goods Authorization) and written approval from Herkules must be obtained before any goods can be shipped to Herkules. We reserve the right to Determine whether failure is due to defective material, normal wear, and / or other causes.

There are no warranties which extend beyond the description on the face hereof. Herkules disclaims any warranty of merchantability or fitness for a particular purpose in connection with the Buyer's purchase of any Product under this agreement. Damages are limited to the sales price of the Herkules system. The terms and conditions herein represent the entire agreement between Herkules and the Buyer. Any prior / future representations do not apply.

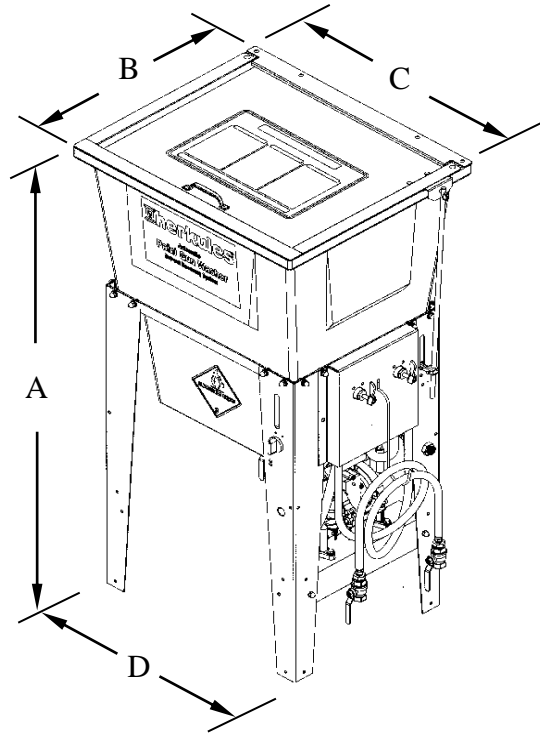
*To obtain a RGA, contact Herkules at 1-800-444-4351 and have the item model, serial numbers, and invoice number if applicable.

Upon receipt of your equipment, please write your purchase information below. Please retain this manual for your records.

Serial Number _____ Model Number _____

Purchase Date _____ Distributor (if applicable) _____

Model Information



NOTE: Dimensions listed are overall measurements.

Model	Description	Weight (kg.)	Dimensions in. (mm)			
			A	B	C	D
G205	Two gun, two cup paint gun washer equipped with a solvent transfer system	68 (31)	46 (1168)	20.625 (524)	24.5 (622)	21.25 (540)

Warning Symbol



This symbol alerts you to the possibility of serious injury or death if you do not follow the instructions.

Caution Symbol



This symbol alerts you to the possibility of damage to or destruction of equipment if you do not follow the instructions.



WARNING



EQUIPMENT MISUSE HAZARD

Equipment misuse can cause the equipment to rupture, malfunction, or start unexpectedly and result in serious injury.

- This equipment is for professional use only.
- Read all instruction manuals, tags, and labels before operating the equipment.
- Use the equipment only for its intended use.
- Do not alter or modify this equipment.
- Do not exceed the maximum working pressure of the lowest rated system component.
- Do not operate the gun washer at a pressure above the maximum working pressure rating of the gun(s) being cleaned.
- Route the hoses away from traffic areas, sharp edges, moving parts, and hot surfaces.
- Do not use the hoses to pull the equipment.
- Do not move pressurized equipment.
- Use fluids or solvents that are compatible with the equipment wetted parts. Read the fluid and solvent manufacturer's warnings
- Comply with all applicable local, state and national fire, electrical and other safety regulations.



PRESSURIZED EQUIPMENT HAZARD

Spray from hose leaks, ruptured components, or from operating the gun washer with an open lid can splash fluid in the eyes or on the skin and cause serious injury.

- A safety device has been installed to shut off the pump when the gun washer lid is opened.
Do not tamper with or alter this device.
- Open the gun washer lid slowly.
- Do not prop the gun washer lid open with an object or by any other means.
- Do not stop or deflect fluid leaks with your hand, body, glove, or rag.
- Tighten all fluid connections before operating the equipment.
- Replace worn, damaged, or loose parts immediately.



WARNING



FIRE AND EXPLOSION HAZARD



Improper grounding, poor air ventilation, open flames, or sparks can cause a hazardous condition and result in fire or explosion and serious injury.

- Ground the equipment. See Installation for grounding procedure.
- Provide fresh air ventilation to avoid the build up of flammable fumes from the solvent.
- Extinguish all open flames or pilot lights in the gun washer area.
- Keep the gun washer area free of debris, including solvent, rags, and gasoline.
- Do not turn on any light switch in the gun washer area while operating or if fumes are present.
- Do not smoke in the gun washer area.
- Do not operate a gasoline engine in the gun washer area.
- Follow the gun manufacturer's solvent and other cleaning recommendations.
- Use solvent with the highest possible flash point.
- If there is any static sparking while using the equipment, **stop operation immediately**. Identify and correct the problem.
- Drain the solvent into a proper storage container when gun washer(s) is not in use.



TOXIC FLUID HAZARD

Hazardous fluids or toxic fumes can cause serious injury or death if splashed in eyes or on the skin, swallowed, or inhaled.

- Know the specific hazards of the fluid you are using. Read the fluid manufacturer's warnings.
- Store hazardous fluid in an approved container. Dispose of hazardous fluid according to all local, state and national guidelines.
- Wear the appropriate protective clothing, gloves, eyewear and respirator.
- Pipe and dispose of the exhaust air safely. If diaphragm fails, the fluid may be exhausted along with the air.

Installation

Installing the Gun Washer

Place gun washer on a level surface in a properly ventilated paint mixing room or paint booth.

Grounding the Gun Washer

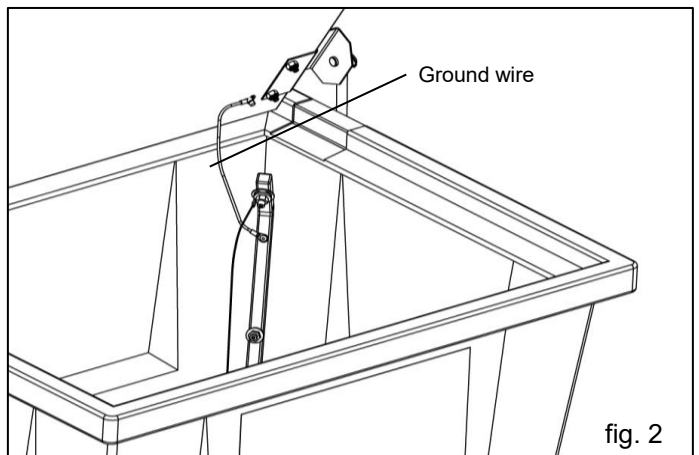
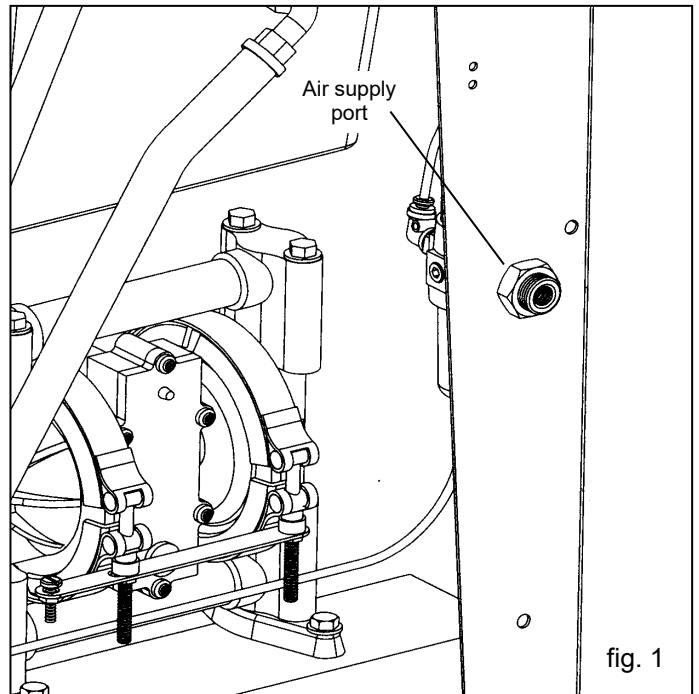
- 1) Connect the ground wire on the gun washer's pump to a true earth ground.
- 2) Ground all equipment used or located in the gun washer area.

Connecting the Air Line

- 1) Install a 1/4 in. npt male coupler, that is compatible with the quick disconnect of your air supply line, into the air supply port of the filter/regulator located on the right rear leg [see fig. 1].
- 2) Connect air line with at least 75 psi to the coupler. Filter/regulator is preset. Do not adjust.

Grounding the lid

Verify the ground wire is attached to lid rivet and the other end is attached to the tub [see fig. 2].



Operation

Filling the Gun Washer with Fluid

- 1) Close ball valve located on the bottom of the tank.
- 2) Connect the solvent fill hose to the clean solvent container.
- 3) Position both valves on the side panel to fill. Turn the timer to the on position. Pump five gallons (18.9 liters) of high quality solvent into the tub. This requires approx. 1-1/2 timer cycles.

Preparing the Equipment to be washed

- 1) Remove paint cup or paint line and the air line from the paint gun.
- 2) Drain excess paint from cup and gun.
- 3) Remove all gauges and regulators.
- 4) Lock the gun trigger in the open position by placing the trigger lock around the gun handle and trigger [see fig. 4].

Placing Equipment in the Gun Washer

To clean guns not mentioned here, use the long or short stem supports as needed [see Fig. 4]. For questions or adapter kits contact your paint gun washer distributor.

Siphon Feed Guns

Place the gun siphon tube on the short stem support.

Gravity Feed Guns (HVLV)

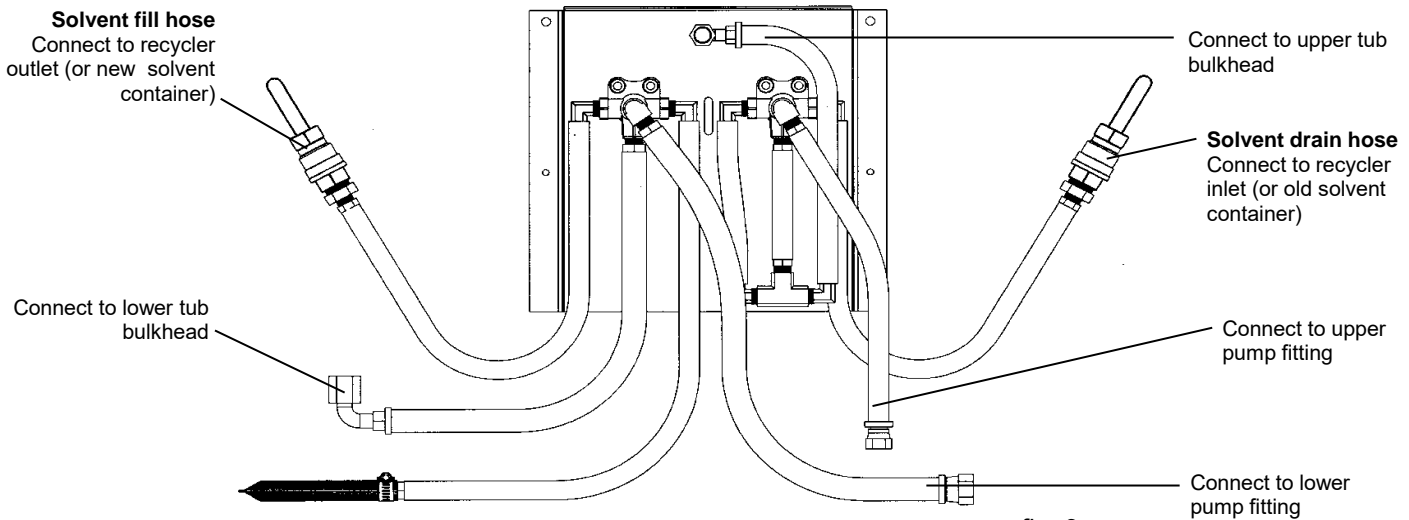
Place long stem support over one of the short stem supports. Place paint inlet of gun on long stem support. Place the air cap assembly over the air inlet of the gun to keep solvent out.

Pressure Feed Guns

Place long stem support over one of the shorter stem supports. Place paint inlet of gun on long stem support.

Pots and Cups

Place pots and/or cups on divider platform over front spray nozzles.



⚠ CAUTION

All pressure gauges must be removed before placing the equipment in the gun washer to avoid damaging the gauges.

Operation

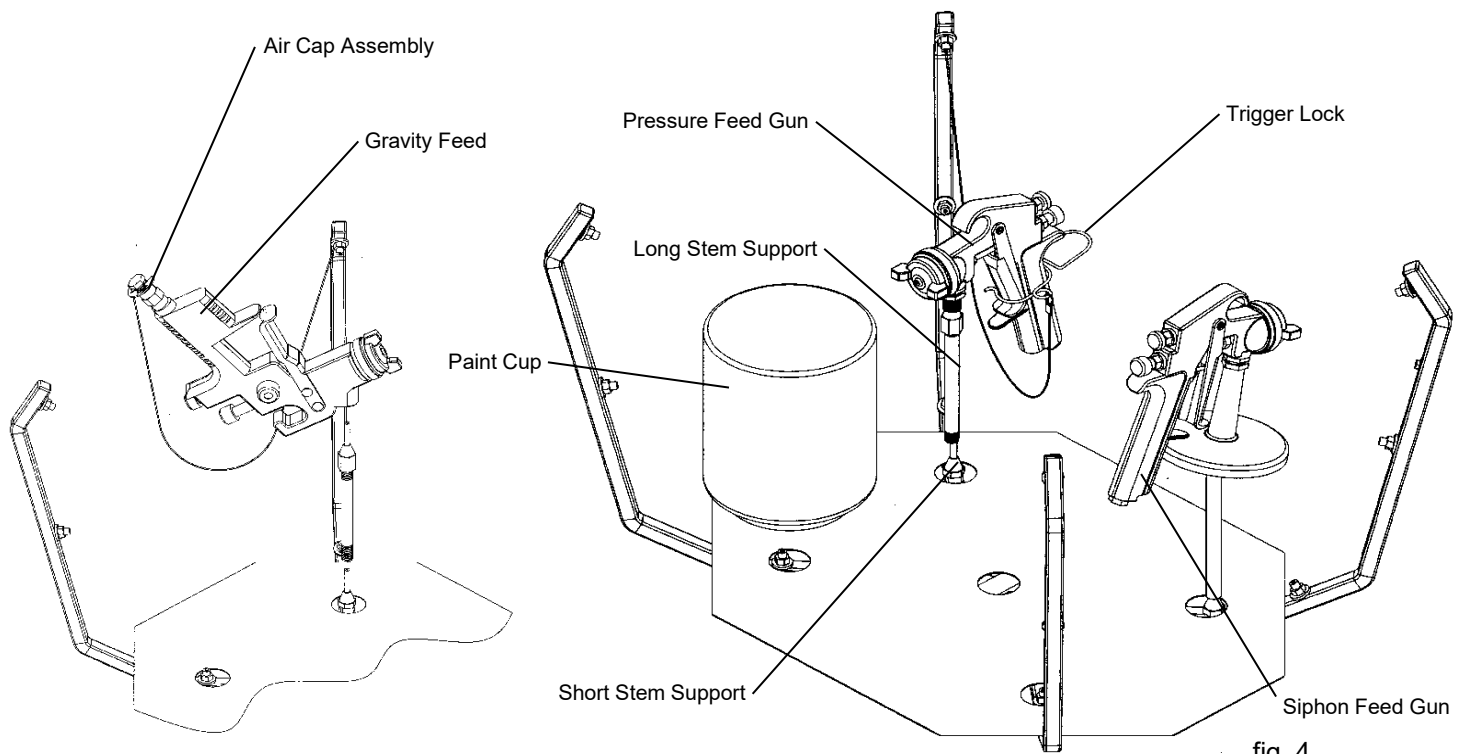


fig. 4

Operating the Gun Washer

- 1) Make sure all wire trigger locks and other accessories are inside the gun washer tub.
- 2) If washing only one set of equipment, place empty cans over the unused nozzles and/or stem supports to prevent solvent spray from hitting the underside of the gun washer lid.
- 3) Close the gun washer lid.
- 4) Position both valves on the side panel to clean.
- 5) Turn the timer knob clockwise 90 degrees to start the gun washer. The gun washer will run for 90 seconds. Turning the timer knob less than 90 degrees will reduce the timing cycle. Paint equipment will clean in 60 to 90 seconds.
- 6) If the lid is opened prior to the end of the timing cycle, the safety air cutoff switch will stop the gun washer. The gun washer will start again when the lid is closed if time remains on the timer.

Note: Open the lid slowly to minimize solvent vapor escape.

- 7) Remove the equipment from the gun washer and wipe off any remaining solvent.

Draining the Gun Washer

- 1) Place a 5-gallon bucket underneath the gun washer
- 2) Place the filtered intake hose into the bucket.
- 3) Open the ball valve located on the bottom of the tank and drain the used solvent into the bucket.
- 4) Connect the solvent drain hose to the used solvent container.

Note: If using a solvent recycling system, insert the solvent drain hose into the recycler's used solvent container.

Position both valves on the side panel to drain. Turn the timer to the on position.

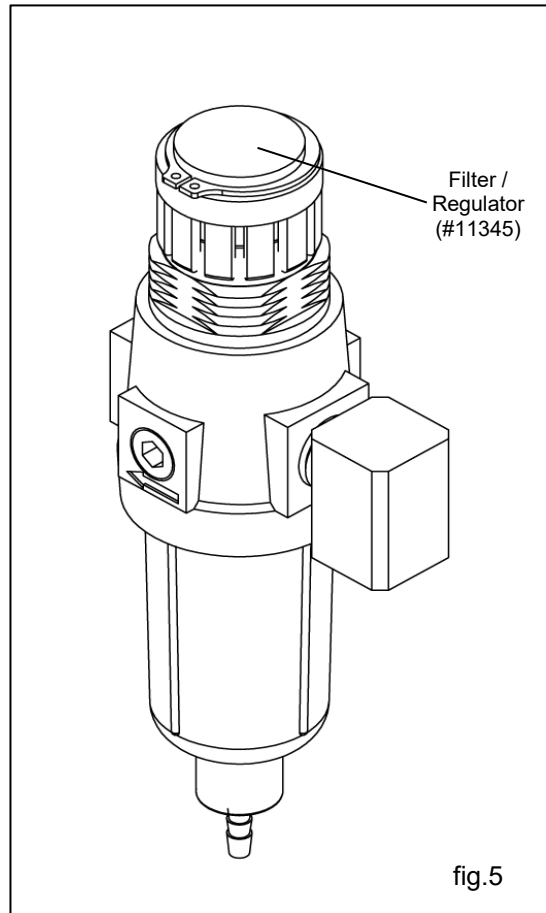
Preventive Maintenance

To keep your machine working efficiently, please follow these directions.

- 1) ALWAYS drain excess paint from cup or pot before placing in gun washer.
- 2) Drain paint sludge from gun washer tank weekly. Do this after a weekend so that it has settled. Open ball valve and drain until clear solvent flows. Add cleaning solution to 1" above intake filter.
- 3) Replace Filter/Regulator yearly. (#11345)
- 4) Change cleaning solution completely when objects being cleaned become tacky to the touch.
- 5) Clean inside of tub and intake filter before filling with solvent cleaning solution.

CAUTION

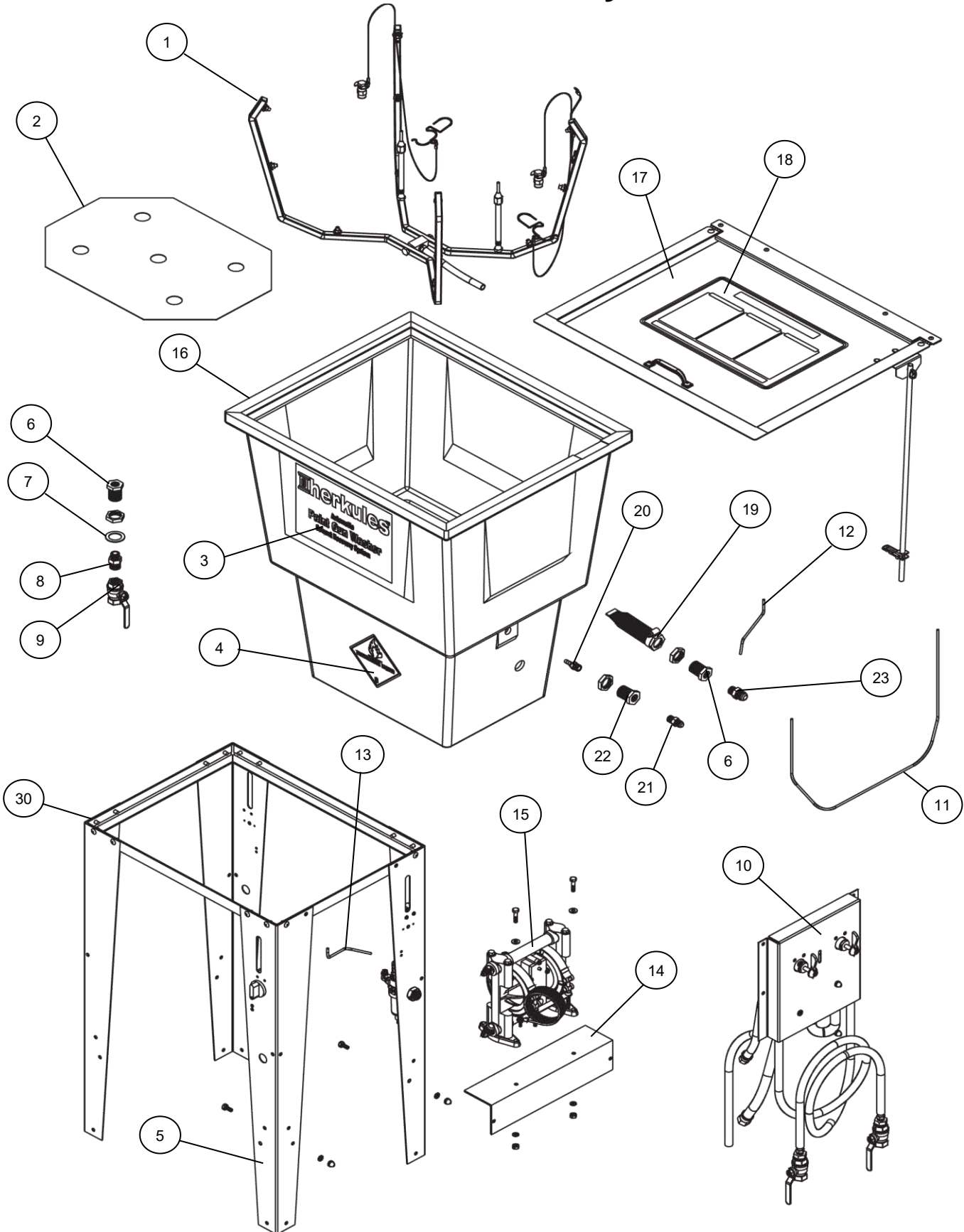
Do not change the setting of the filter/regulator. This could damage the filter/regulator or pump



Troubleshooting

Problem	Possible Solution
Gun washer will not turn on.	<ol style="list-style-type: none"> 1 Make sure the air line is properly connected with at least 75 psi. Air pressure is regulated at 75 psi. 2 Make sure lid is fully closed. Make sure the lid rod actuator is making full contact with the limit valve on the right rear leg. 3 Check all air connections to ensure that there are no leaks. 4 Make sure timer cam is engaging the limit valve on the right front leg. 5 Make sure timer is on and functioning correctly.
Gun washer turns on but pumps slowly or not at all.	<ol style="list-style-type: none"> 1 Make sure intake filter is not clogged (Clean or replace). 2 Make sure the air line is properly connected with at least 75 psi. Air pressure is regulated at 75 psi. 3 Check all air connections to ensure that there are no leaks. 4 Make sure there is 5 gallons of clean solvent in the gun washer. The solvent should be an inch above the intake filter. 5 Make sure lid is fully closed. Make sure the lid rod actuator is making full contact with the limit valve on the right rear leg. 6 Make sure manifold nozzles and stem supports are not clogged.
Gun washer will not shut off	<ol style="list-style-type: none"> 1 Make sure timer cam is moving. If its not, slightly loosen the nuts holding the limit valve on the right front leg of the stand. Reposition valve and tighten nuts. 2 Make sure limit valves located on the right front leg or right rear leg of the stand are not stuck in closed position.

G205 Parts Layout

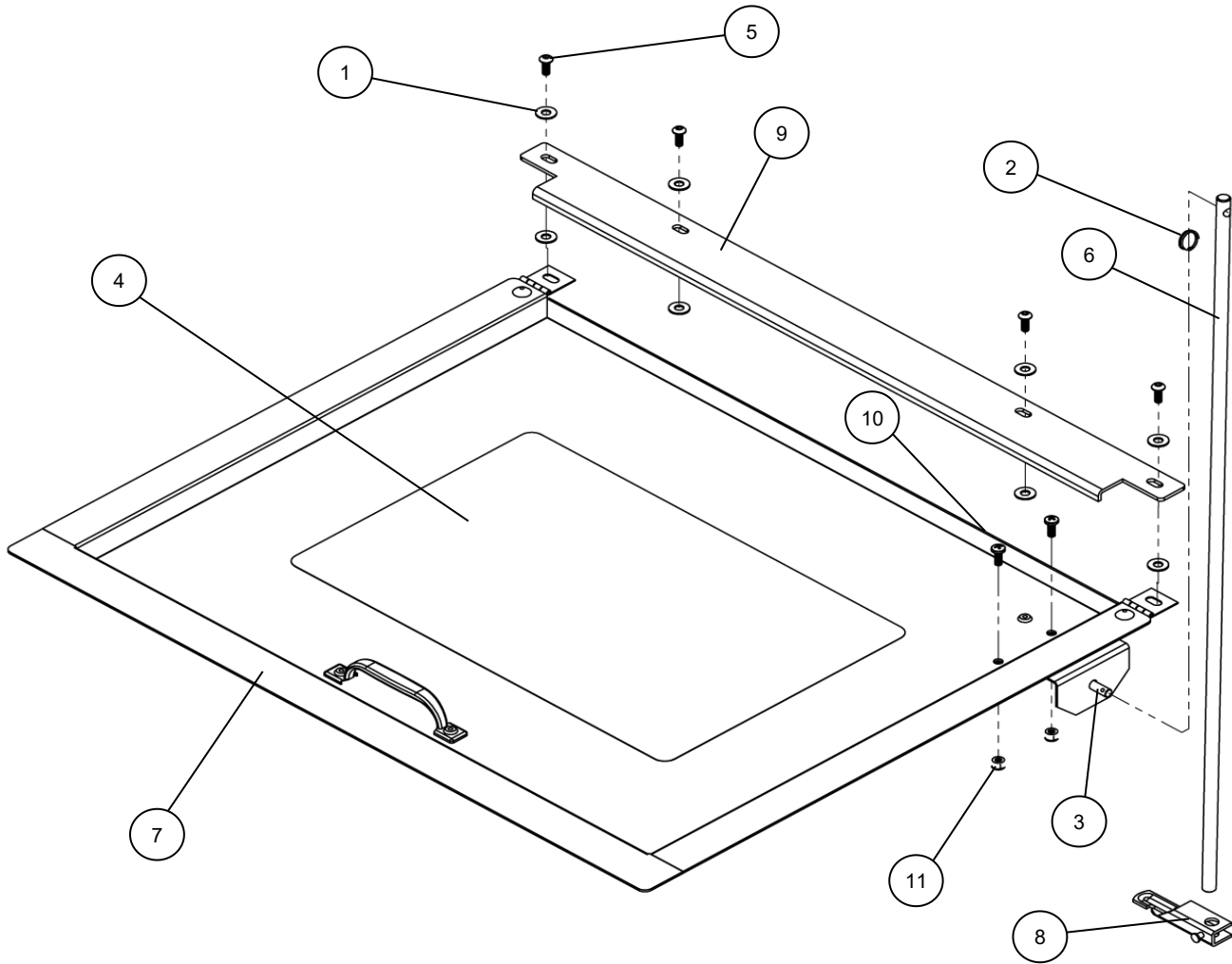


G205 Parts Layout

	Part #	Description	Quantity
1	12490	Manifold Assembly	1 EA.
2	25D	Divider - Stainless	1 EA.
3	1001706	Front Decal	1 EA.
4	1000651	Flammable Caution Sticker	1 EA.
5	13844	Stand Assembly	1 EA.
6	1002644	Bulkhead 1-14 UNS x 1/2 NPT - Brass	2 EA.
7	85B	Washer 1-1/2 x 1 - Nylon	1 EA.
8	62	Adaptor 1/2 NPT x 3/8 NPT Brass	1 EA.
9	6	Ball Valve	1 EA.
10	12209	Fluid Transfer Panel Assembly	1 EA.
11	M5	Tube 5/32 Plastic - Blue	30 IN.
12	M5-BLACK	Tube 5/32 Plastic - Black	9 IN.
13	M5-NEUTRAL	Tube 5/32 Plastic - Neutral	13 IN.
14	1007865	Pump Mounting Bracket	1 EA.
15	11962	Pump Assembly	1 EA.
16	13242	Tub	1 EA.
17	19196	Lid Assembly	1 EA.
18	1001708	Lid Sticker	1 EA.
19	12491	Filter for Pump Inlet	1 EA.
20	57	Hose Barb 3/8 x 1/4 NPT Brass	1 EA.
21	77	Connector 3/8 T x 1/4 NPT Z	1 EA.
22	1002643	Bulkhead 3/4 NPT x 1/4 NPT - Brass	1 EA.
23	77A	Fitting 1/2 T x 3/8 NPT - Zinc	1 EA.

Note: For parts shown but not identified refer to assembly layouts on pages 16-22.

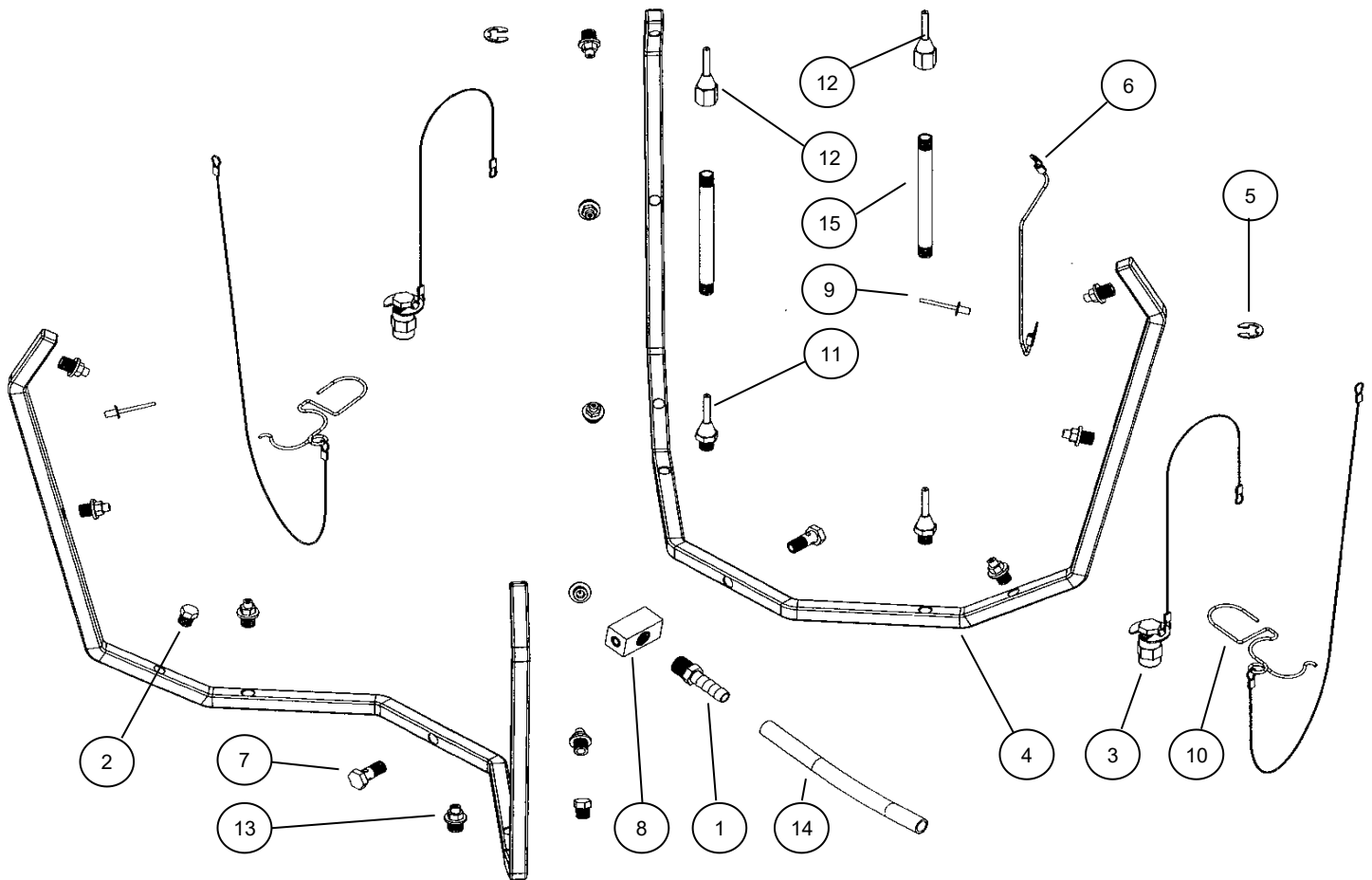
G205 Lid Layout



Part #	Description	Quantity
1	002-161 Washer Flat #10 USS - Zinc	8 EA.
2	1000252 Actuator Clip Ring	1 EA.
3	1000652 Actuator Pin	1 EA.
4	1001708 Lid Sticker	1 EA.
5	1002546 Screw 10-24 x 1/2	4 EA.
6	1002572 Actuator Rod	1 EA.
7	19196 Lid Assembly	1 EA.
8	11957 Actuator Bracket Notched	1 EA.
9	12321 Lid Stop	1 EA.
10	005-131 Screw 10-24 x 1/2 - Stainless	2 EA.
11	005-137 Nylock Nut 10-24	2 EA.

Note: Parts are shown for reference purposes only and are not necessarily part of a Herkules assembly.

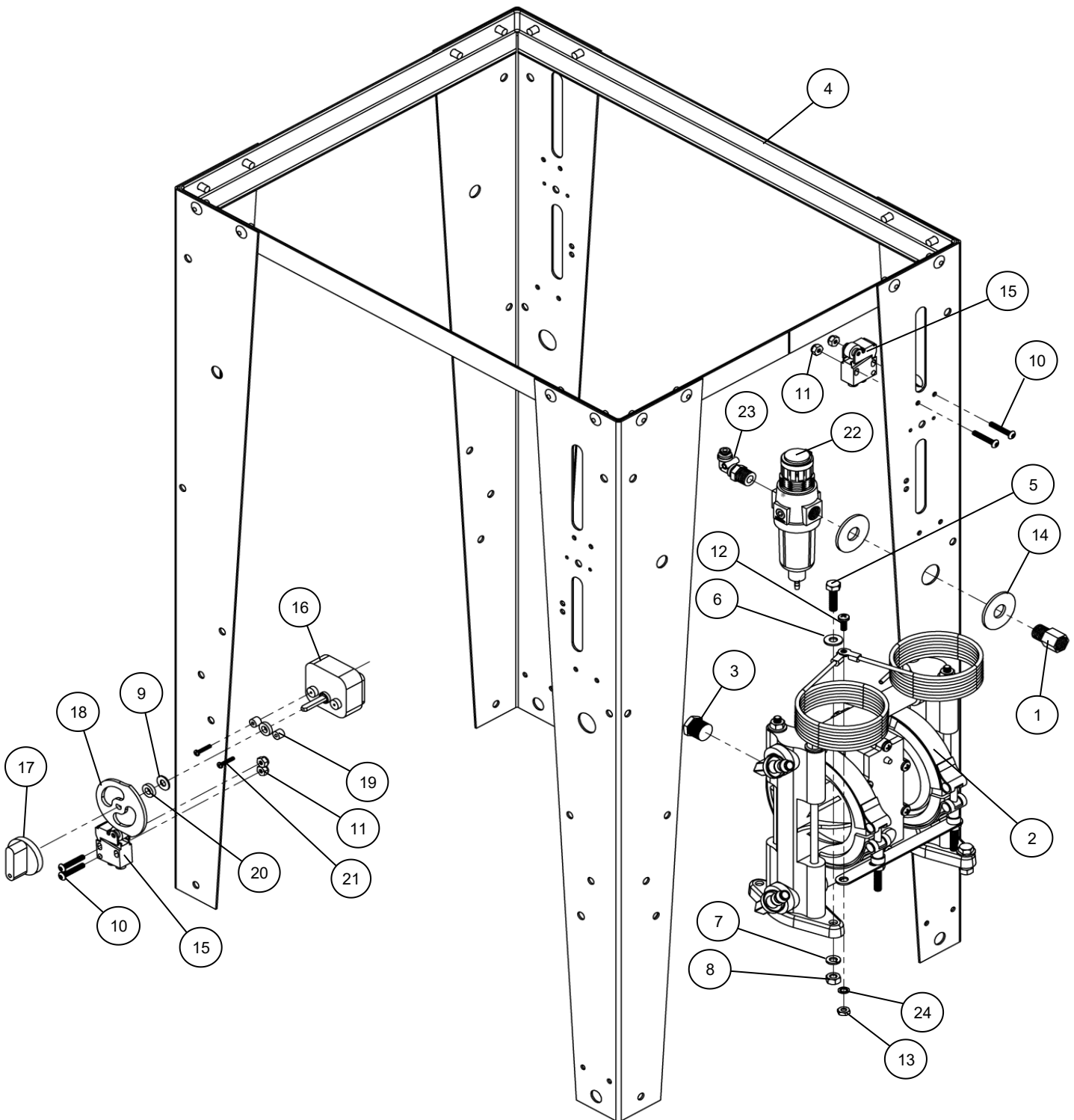
G205 Manifold Layout



Part #	Description	Quantity	
1	57	Hose Barb 3/8 x 1/4 NPT - Brass	1 EA.
2	59	Hex Plug 1/8 NPT - Brass	2 EA.
3	12509	Air Cap Assembly - Brass and Stainless	2 EA.
4	1002321	Manifold Half - Stainless	2 EA.
5	1002651	E-ring - Stainless	2 EA.
6	002-121A-6	Manifold Ground Wire	1 EA.
7	002-136S	Manifold Bolt - Stainless	2 EA.
8	002-137	Manifold Block	1 EA.
9	002-192	Ground Wire Rivet	2 EA.
10	22BA	Trigger Lock Assembly	2 EA.
11	53A	Stem Support Male	2 EA.
12	53B	Stem Support Female	2 EA.
13	54P1	Full jet Nozzle - White	12 EA.
14	64PE	Manifold Hose	7 IN.
15	C9A	Nipple 4-1/2" - Brass	2 EA.

Note: Parts are shown for reference purposes only and are not necessarily part of a Herkules assembly.

G205 Pump and Legs Layout

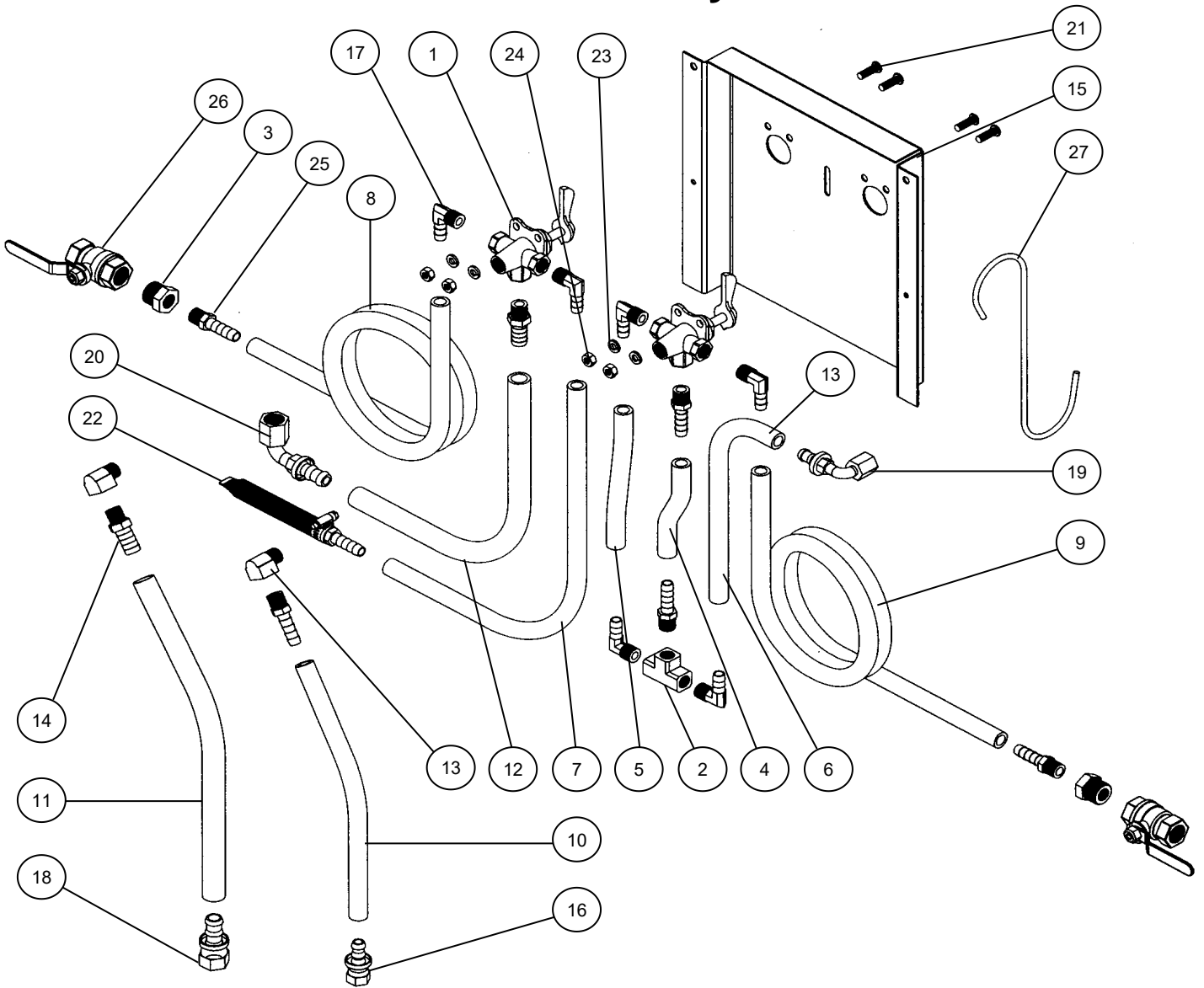


G205 Pump and Legs Layout

Part #	Description	Quantity	
1	67	Adaptor 1/4 NPT - Brass	1 EA.
2	11962	Pump Assembly	1 EA.
3	1001441	Muffler	1 EA.
4	13844	Stand Assembly	2 EA.
5	83	Bolt Hex Full 1/4-20 x 1 GD5 Z	2 EA.
6	001-705	Washer Flat 1/4 USS	2 EA.
7	85	Washer Lock 1/4 Z	2 EA.
8	84	Nut Hex 1/4-20 Z	2 EA.
9	002-161	Washer Flat #10 USS - Zinc	1 EA.
10	002-171	Screw 8-32 x 1 - Black	4 EA.
11	002-172	Nut Nylock 8-32 - Zinc	4 EA.
12	005-131	Screw 10-24 x 1/2 - Stainless	1 EA.
13	005-132	Nut Hex 10-24 - Stainless	1 EA.
14	85I	Washer Flat 1/2 USS Z	2 EA.
15	M1C	Limit Valve - Gold	2 EA.
16	1007592	Timer	1 EA.
17	M230-002	Knob for Timer	1 EA.
18	M230-003	Cam For Timer	1 EA.
19	M230-004	Spacer 1/4" Thick - Nylon	2 EA.
20	M230-005	Spacer 1/8" Thick - Nylon	2 EA.
21	M230-006	Timer Screw #4 x 5/8	2 EA.
22	11345	Filter / Regulator	1 EA.
23	24E	Washer Lock Int Tooth #10 Z	1 EA.

Note: Parts are shown for reference purposes only and are not necessarily part of a Herkules assembly.

G205 Panel Layout

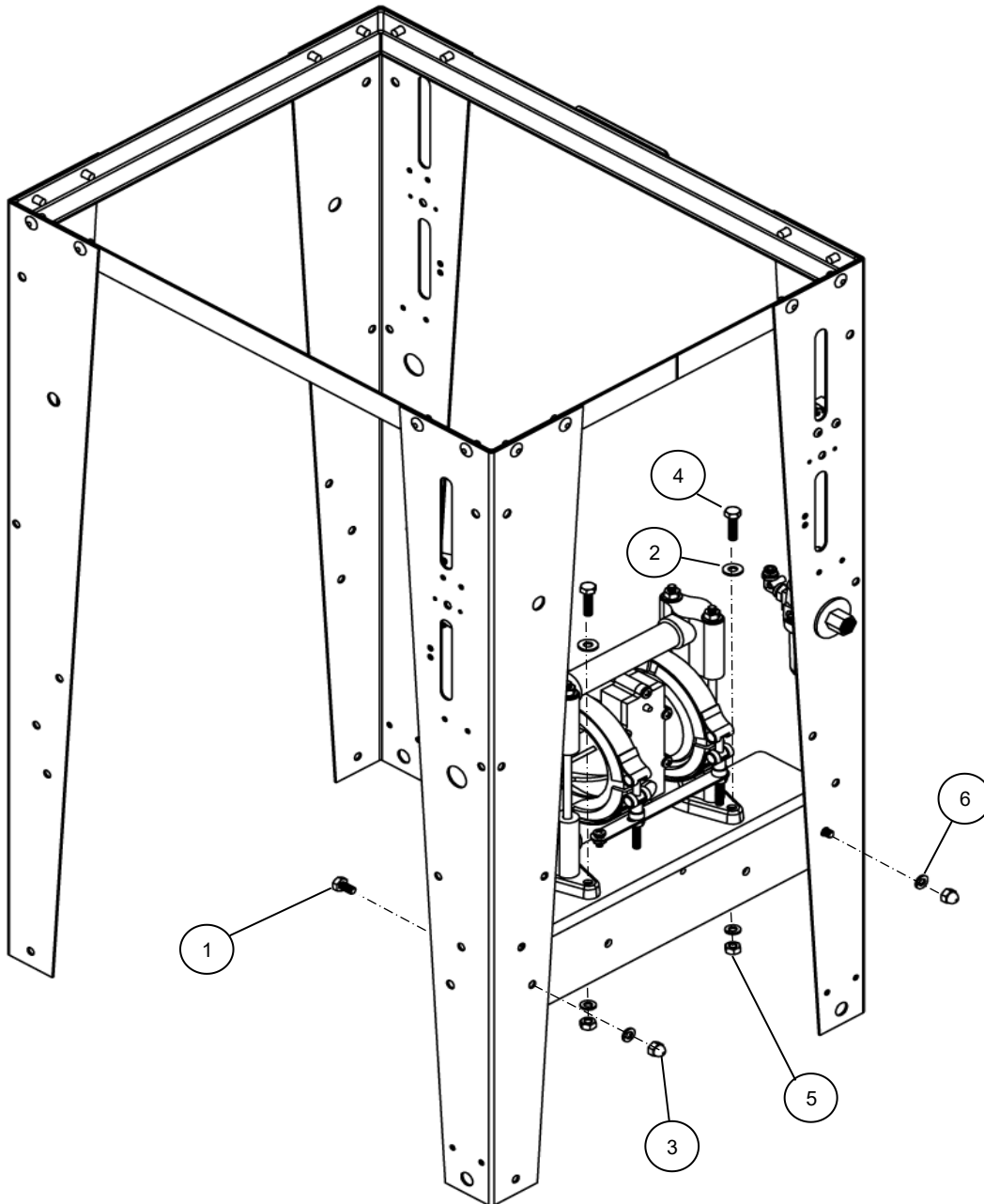


G205 Panel Layout

	Part #	Description	Quantity
1	C26	Valve 4-Way 1/4 NPT Brass	2 EA.
2	C12BX	Tee 1/4 NPT Brass	1 EA.
3	66B	Reducer 1/2 NPT x 1/4 NPT Brass	2 EA.
4	100-084	Hose 3/8 ID Blue	3.63 IN.
5	100-084	Hose 3/8 ID Blue	5.63 IN.
6	100-084	Hose 3/8 ID Blue	9 IN.
7	100-084	Hose 3/8 ID Blue	29 IN.
8	100-084	Hose 3/8 ID Blue	96 IN.
9	100-084	Hose 3/8 ID Blue	96 IN.
10	100-084	Hose 3/8 ID Blue	12 IN.
11	100-083	Hose 1/2 ID Blue	18 IN.
12	100-083	Hose 1/2 ID Blue	18 IN.
13	002-131	Elbow 1/4 NPT Brass	2 EA.
14	1002467	Hose Barb 1/2 X 1/4 NPT Brass	2 EA
15	1002466	Panel	1 EA
16	1000981	Hose Barb 3/8 NPT x # 6 Flare	1 EA.
17	1000967	Hose Barb 90 Deg 3/8 X 1/4 NPT Brass	6 EA.
18	1000869	Hose Barb 1/2 NPT x # 8 Flare	1 EA.
19	1000841	Hose Barb 90 Deg 3/8 x # 6 Flare	1 EA.
20	1000840	Hose Barb 90 Deg 1/2 x # 8 Flare	1 EA.
21	1000767	Bolt BHSC 1/4-20 X 3/4 Black	4 EA.
22	11243	Filter Assembly	1 EA
23	85	Washer Lock 1/4 Zinc	4 EA.
24	84	Nut Hex 1/4 Zinc	4 EA.
25	57	Hose Barb 3/8 X 1/4 NPT Brass	5 EA
26	6	Ball Valve 1/2 NPT Brass	2 EA
27	001-600A	S-Hook	1 EA

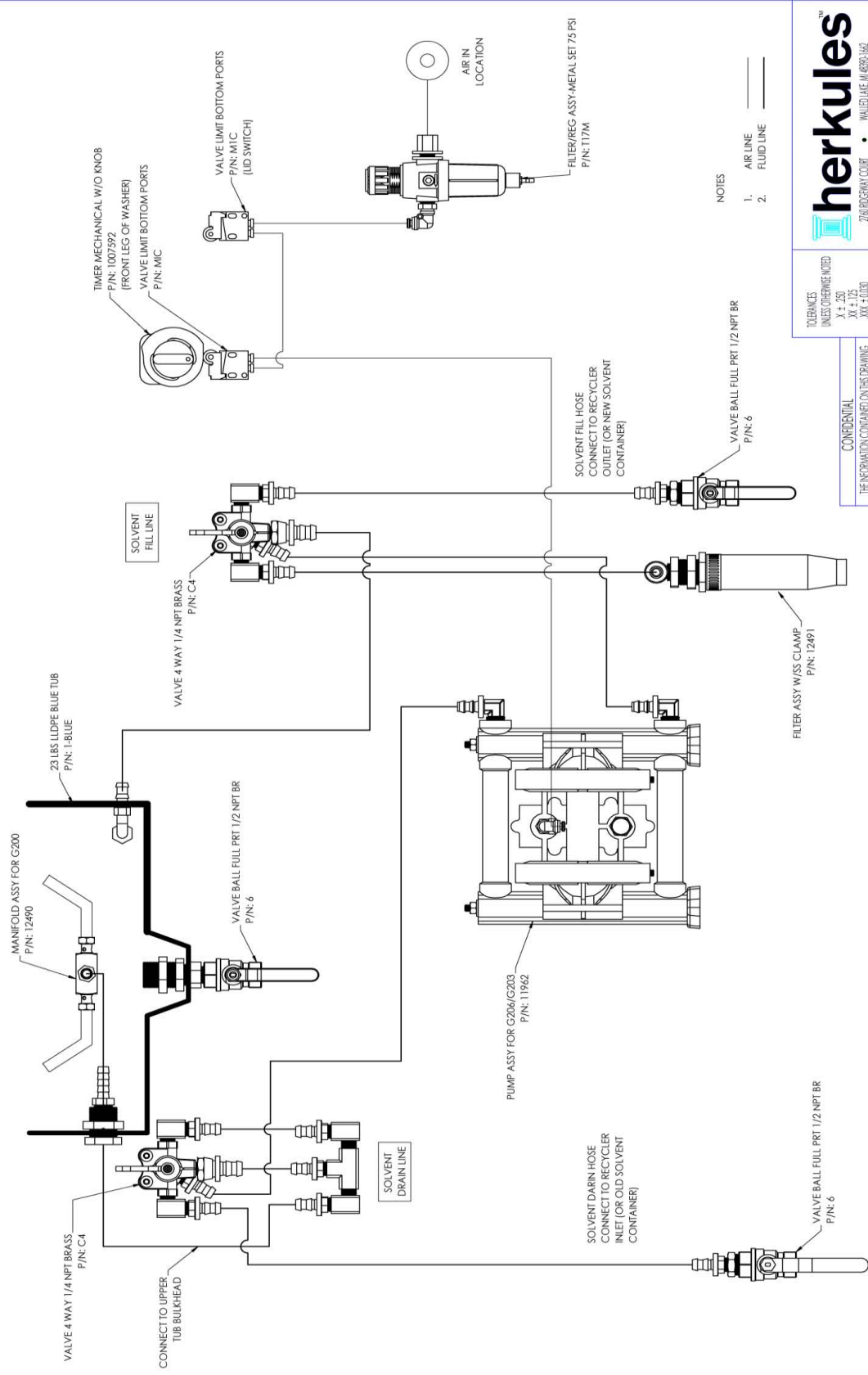
Note: Parts are shown for reference purposes only and are not necessarily part of a Herkules assembly.

G205 Hardware Layout



Part #	Description	Quantity
1	001-702 Bolt Hex 1/4-20 x 1/2 - Zinc	2 EA.
2	001-705 Washer Flat 1/4 USS - Zinc	2 EA.
3	008-244 Acorn Nut 1/4-20 - Nickel	2 EA.
4	83 Bolt Hex 1/4-20 x 1 - Zinc	2 EA.
5	84 Nut Hex 1/4-20 - Zinc	2 EA.
6	85 Washer Lock 1/4 - Zinc	4 EA.

PART #



NOTES
 1. AIR LINE
 2. FLUID LINE

herkules™
 280 POLDRAY COURT • WALLINGFORD, VT 05491-1402
 TITLE: G205 SCHEMATIC
 DATE: 4/21/2020
 DRAWING NO.:
 REV: 1 OF 2

TOOLERANCES UNLESS OTHERWISE NOTED:
 XX ± .250
 XX ± .125
 XXX ± .030
 XXXX ± .030
 ANGLE ± 1°

CONFIDENTIAL
 THE INFORMATION CONTAINED ON THIS DRAWING IS SOLELY CONFIDENTIAL AND PROPRIETARY TO HERKULES. ANY REPRODUCTION IN PART OR WHOLE WITHOUT THE WRITTEN PERMISSION OF HERKULES CORPORATION IS PROHIBITED AND WILL BE UNLAWFUL.