

G415



Made in USA

OWNERS MANUAL



This manual contains important information concerning the installation and operation of the gun washers listed above. **Read manual thoroughly and keep for future reference**

INSTRUCTIONS



Herkules Patent Numbers

These products have patent protection under one or more of the following patent numbers:

9422142, 8733508, 8714524, 866247, 8052120, 7070167, 5485860, 5193561, 5174317, 4960142, 4793369 and Patents Pending

Website: www.herkules.us
E-mail: info@herkules.us

Herkules Equipment Corporation
2760 Ridgeway Court
Walled Lake, MI 48390-1662 USA

Toll Free: 800-444-4351
Phone: 248-960-7100
Fax: 248 960-7109

Table of Contents

Warranty	3
Model Information	4
Warnings	5-6
Installation	7
Operation	8-10
Preventative Maintenance	11
Troubleshooting	12
Drawings with Part Lists	13-18
G415 Schematic	19

Herkules Equipment Corporation

A U.S.-based manufacturer, Herkules Equipment Corporation offers a diverse line of products that support multiple industries by improving efficiency, productivity, ergonomics, comfort, and safety in the work environment. The company consists of the three product lines: Herkules, Enkon and BossLifts.

Since 1985, Herkules has designed, engineered and manufactured quality products at our Walled Lake, Michigan facility. Our company supports our products after delivery, with U.S. based customer service, and replacement parts, enabling our customers to proceed with confidence.

To learn more about Herkules, visit <http://herkules.us>. Contact us at info@herkules.us with any questions or concerns.

Thank you for purchasing a Herkules product!

Warranty

IMPORTANT NOTICE: if you have a problem with your Herkules product,

DO NOT RETURN TO PLACE OF PURCHASE

Contact Herkules: by phone 1-800-444-4351; by email, info@herkules.us; or on the web at herkules.us/contact-us.

At Herkules we take great pride in the construction of our American-made products, and we stand behind their reliability. Our limited liability warranty coverage for Paint Gun Washers warranties the unit for a period of 12 months. Washer pumps have a separate warranty; the Herkules 338 pump is protected for a period of 2 years from the date of purchase. All other pumps, including rinse pumps, are warranted for 12 months.

This warranty does not apply to equipment damaged from accident, abuse, overload, misuse, negligence, improper installation, abrasive or corrosive materials, or shipping damage.

In the event of product failure, the defective item must be returned, freight prepaid, to the Herkules manufacturing plant for repair or replacement. If repairs are required, Herkules will not be liable for these repairs to take place in the field regardless of the application. Proof of purchase and date of purchase must be confirmed. An RGA* (Returned Goods Authorization) and written approval from Herkules must be obtained before any goods can be shipped to Herkules. We reserve the right to Determine whether failure is due to defective material, normal wear, and / or other causes.

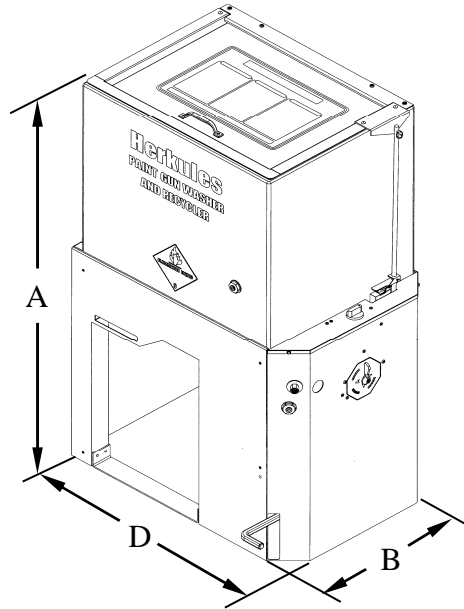
There are no warranties which extend beyond the description on the face hereof. Herkules disclaims any warranty of merchantability or fitness for a particular purpose in connection with the Buyer's purchase of any Product under this agreement. Damages are limited to the sales price of the Herkules system. The terms and conditions herein represent the entire agreement between Herkules and the Buyer. Any prior / future representations do not apply.

*To obtain a RGA, contact Herkules at 1-800-444-4351 and have the item model, serial numbers, and invoice number if applicable.

Upon receipt of your equipment, please write your purchase information below. Please retain this manual for your records.

Serial Number	_____	Model Number	_____
Purchase Date	_____	Distributor (if applicable)	_____

Model Information



NOTE: Dimensions listed are overall measurements.

Model	Description	Weight lbs/(kg)	Dimensions in./(mm)		
			A	B	*C
G415	Equipped with two diaphragm pumps, one for washing and one for rinsing. Adapted for cleaning pressure pot systems paint hoses, and cans up to five gallons plus a hand held brush for manual cleaning of parts. Includes a factory installed Fume Extractor.	87 (39.5)	42 (1067)	**25.5 (648)	20.25 (514)

Notes:

* Foot Pedal protrudes an additional 4.5" (114 mm.) past the front of the Gun Washer.

** Must allow room for 5-gallon can of solvent for the clean rinse option on the left side or rear of the Gun Washer.

Warning Symbol



This symbol alerts you to the possibility of serious injury or death if you do not follow the instructions.

Caution Symbol



This symbol alerts you to the possibility of damage to or destruction of equipment if you do not follow the instructions.



WARNING



EQUIPMENT MISUSE HAZARD

Equipment misuse can cause the equipment to rupture, malfunction, or start unexpectedly and result in serious injury.

- This equipment is for professional use only.
- Read all instruction manuals, tags, and labels before operating the equipment.
- Use the equipment only for its intended use.
- Do not alter or modify this equipment.
- Do not exceed the maximum working pressure of the lowest rated system component.
- Do not operate the gun washer at a pressure above the maximum working pressure rating of the gun(s) being cleaned.
- Route the hoses away from traffic areas, sharp edges, moving parts, and hot surfaces.
- Do not use the hoses to pull the equipment.
- Do not move pressurized equipment.
- Use fluids or solvents that are compatible with the equipment wetted parts. Read the fluid and solvent manufacturer's warnings.
- Comply with all applicable local, state, and national fire, electrical, and other safety regulation.



PRESSURIZED EQUIPMENT HAZARD

Spray from hose leaks, ruptured components, or from operating the gun washer with an open lid can splash fluid in the eyes or on the skin and cause serious injury.

- A safety device has been installed to shut off the pump when the gun washer lid is opened. Do not tamper with or alter this device.
- Open the gun washer lid slowly.
- Do not stop or deflect fluid leaks with your hand, body, glove, or rag.
- Tighten all fluid connections before operating the equipment.
- Replace worn, damaged, or loose parts immediately.



WARNING



FIRE AND EXPLOSION HAZARD



Improper grounding, poor air ventilation, open flames, or sparks can cause a hazardous condition and result in fire or explosion and serious injury.

- Ground the equipment. See Installation for grounding procedure.
- Provide fresh air ventilation to avoid the build up of flammable fumes from the cleaning solution.
- Extinguish all open flames or pilot lights in the gun washer area.
- Disconnect all electrical equipment in the gun washer area.
- Keep the gun washer area free of debris, including cleaning solutions, rags, and gasoline.
- Do not turn on any light switch in the gun washer area while operating or if fumes are present.
- Do not smoke in the gun washer area.
- Do not operate a gasoline engine in the gun washer area.
- Follow the gun manufacturer's solvent and other cleaning recommendations.
- Use solvent with the highest possible flash point.
- If there is any static sparking while using the equipment, **stop operation immediately**. Identify and correct the problem.
- Drain the cleaning solution into a proper storage container when gun washer(s) is not in use.



TOXIC FLUID HAZARD

Hazardous fluids or toxic fumes can cause serious injury or death if splashed in eyes or on the skin, swallowed, or inhaled.

- Know the specific hazards of the fluid you are using. Read the fluid manufacturer's warnings.
- Store hazardous fluid in an approved container. Dispose of hazardous fluid according to all local, state and national guidelines.
- Wear the appropriate protective clothing, gloves, eyewear and respirator.
- Pipe and dispose of the exhaust air safely. If diaphragm fails, the fluid may be exhausted along with the air.

Installation

Installing the Gun Washer

- 1) Place gun washer on a level surface in a properly ventilated paint mixing room or paint booth.

Grounding the Gun Washer

- 1) Connect the ground wire on the gun washer's pump to a true earth ground.
- 2) Ground all equipment used or located in the gun washer area.

Connecting the Air Line

- 1) Install a 1/4 in. npt male coupler (that is compatible with the quick disconnect of your air supply line) into the air supply port of the filter/regulator located on the right leg.
- 2) Connect air line with 90-120 psi to the coupler.

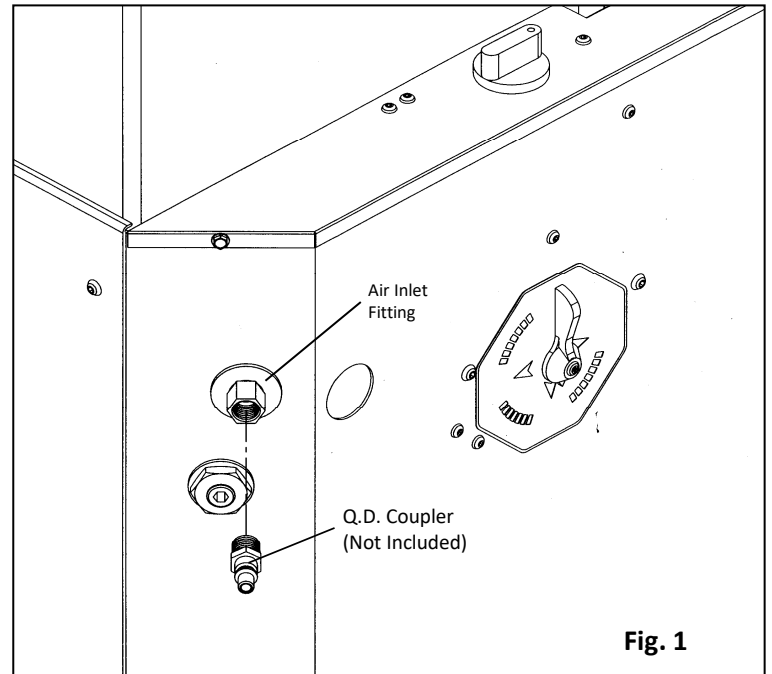


Fig. 1



CAUTION

Do not change the setting of the filter/regulator. Doing so could damage the filter/regulator or pump.

Operation

Filling the Gun Washer with Fluid

- 1) Close ball valve located on the bottom of the tank.
- 2) Pour five gallons (18.9 liters) of high quality, slow evaporating solvent into the tank.

Preparing the Equipment to be washed

- 1) Remove paint cup or paint line and the air line from the paint gun.
- 2) Drain excess paint from cup and gun.
- 3) Remove all gauges and regulators

⚠ CAUTION

All pressure gauges must be removed before placing the equipment in the gun washer to avoid damaging the gauges.

- 4) Remove the air cap/fluid tip from the paint gun (for manual cleaning only).

Placing Equipment in the Gun Washer

To clean guns not mentioned here, use the long or short stem supports as needed [see Fig. 2]. For questions or adapter kits, contact your paint gun washer distributors.

Siphon Feed Guns

Place the gun siphon tube on the short stem support.

Gravity feed Guns (HVLV)

Place the long stem support over the short stem support. Place paint inlet of the gun on long stem support. Place the air cap assembly over the air inlet of the gun to keep solvent out.

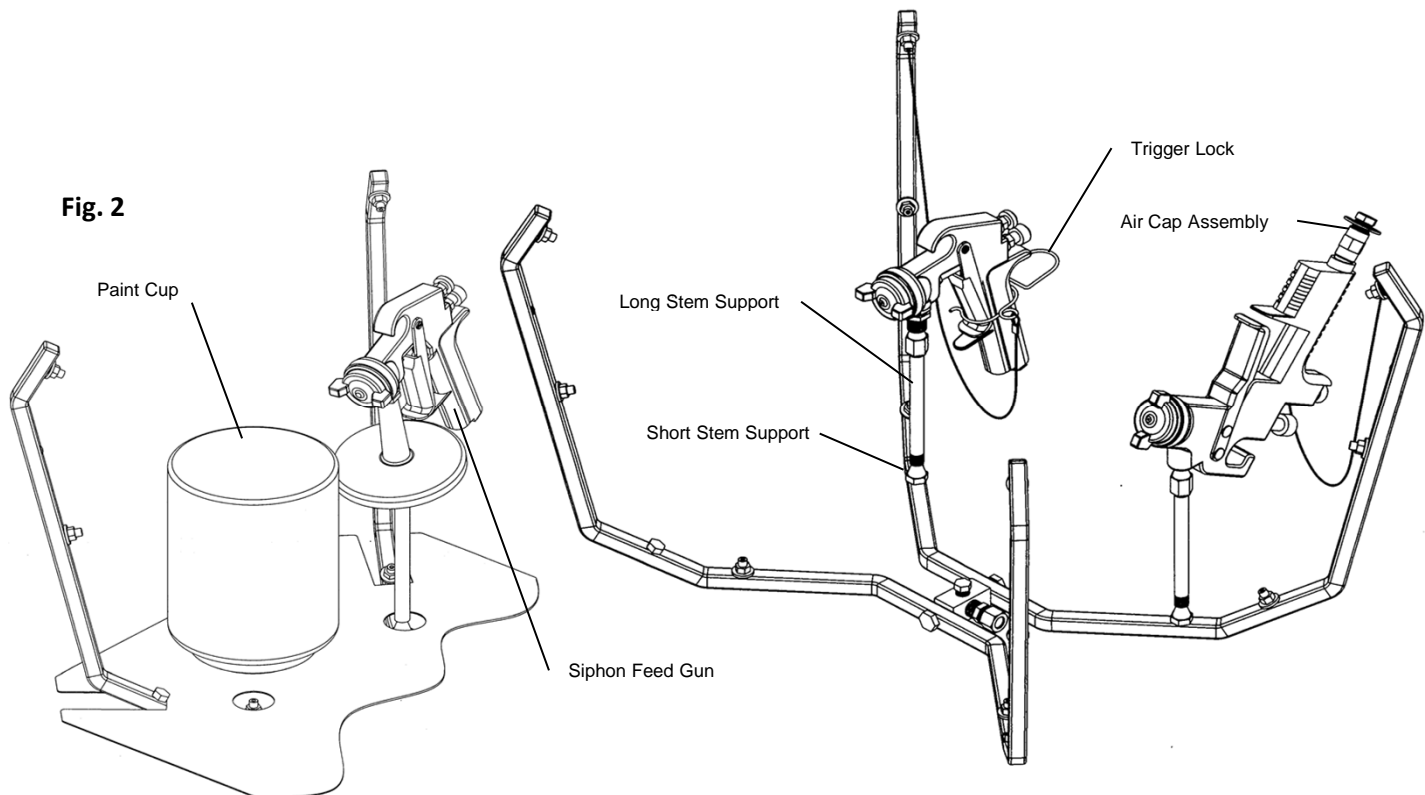
Pressure Feed Guns

Place the long stem support over the short stem support. Place paint inlet of gun on long stem support.

Pots and Cups

Place pots and/or cups on divider platform over front spray nozzles.

Fig. 2

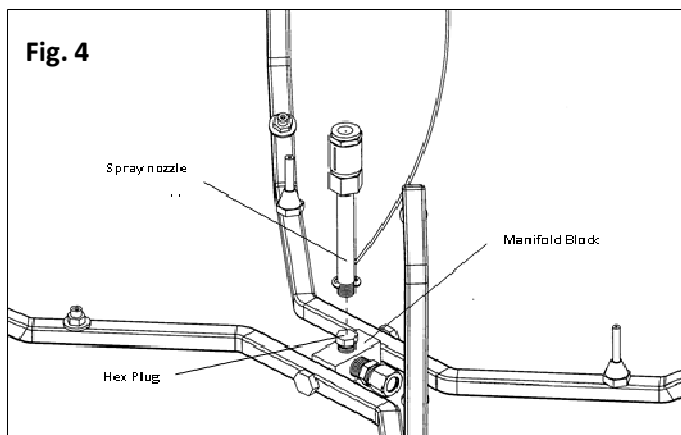
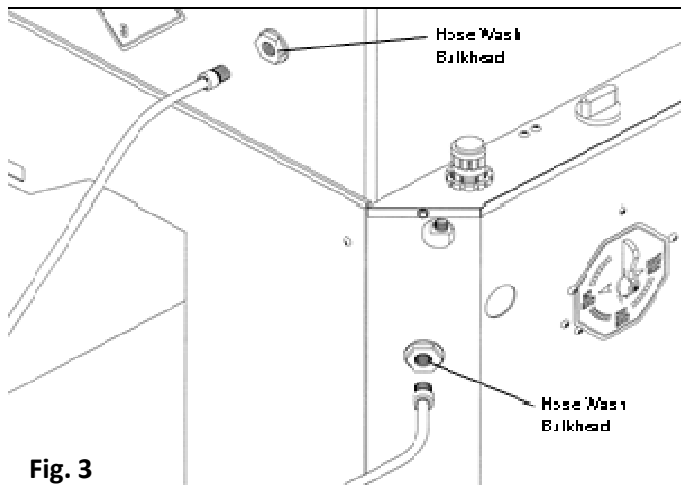


Operation

Additional Hose and Can Washing Features

Internal Washing of Paint Lines

Remove the brass plugs from the hose wash bulkheads [see Fig. 3]. Install a female fluid quick coupler with 1/4 in. npt male threads (suitable for lacquer thinner) into the hose wash bulkheads. Connect the paint line to the couplers. Set the pointer on the shield to hose clean and operate the gun washer. Re-install the brass plugs when resuming normal gun cleaning operations.



Internal Washing of Paint Lines with Guns Attached

Remove the brass plug from the hose wash bulkhead on the front of the shield. Install a female fluid quick coupler with 1/4 in. npt male threads (suitable for lacquer thinner). Connect paint line with gun attached, to the coupler. Set the pointer on the shield to the hose clean position and operate the gun washer. To "bleed" the paint (into a container,) hold the trigger of the gun open until thinner begins to flow. Re-install the brass plug when resuming normal gun cleaning operations.

Internal and External Washing of Paint Lines with Guns Attached

Remove the hex plug from the manifold block. Install a female fluid quick coupler with 1/4 in. npt male threads (suitable for lacquer thinner) into the center of the manifold [see Fig. 4]. Connect the paint line with gun attached, to the coupler. Place the paint line with gun attached inside the gun washer. Lock the gun trigger in the open position with the wire trigger lock. Set the pointer on the shield to the gun clean position. Operate the gun washer. Re-install the hex plug when resuming normal gun cleaning operations.

Washing Pressure Pot and Lid

Remove the hex plug from the manifold block and insert the spray nozzle assembly, hanging on the back of the manifold, into the manifold block [see Fig. 4]. Place pot over spray nozzle. Place the pickup tube of lid over one of the short stem supports (remove gauges). Operate gun washer. Re-install the hex plug when resuming normal gun cleaning operations.

Washing Five Gallon Cans

Remove the hex plug from the manifold block and insert the spray nozzle assembly, hanging on the back of the manifold, into the manifold block [see Fig. 4]. Place five-gallon can over spray nozzle. Operate gun washer. Re-install the hex plug when resuming normal gun cleaning operations.

Operation

Rinsing of Paint Equipment

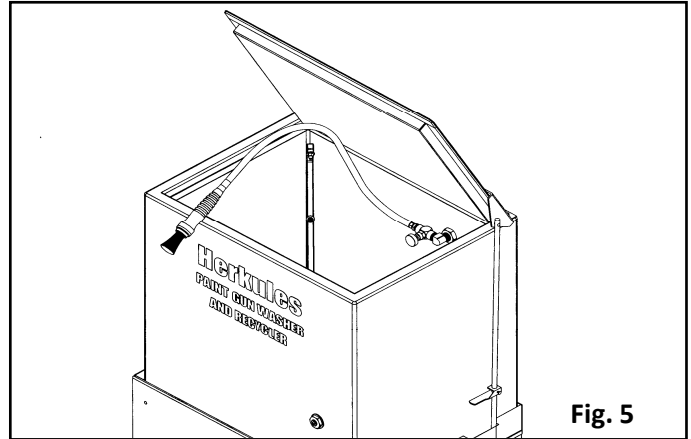
Place a five-gallon can of clean solvent next to gun washer. Remove the cap from the can and replace it with the plug provided in the parts bag. Insert the siphon tube through the plug, and position the can in the desired location [see Fig. 6]. After the washing cycle is finished, press and hold the rinse button for approximately 3-6 seconds.

Operating Fume Extractor

Attach a 1-1/4" exhaust hose (not included) to the fume extractor on the back of the gun washer [see fig. 6]. Run the other end of the hose to the exhaust of the shop paint booth. **DO NOT OPERATE THE GUN WASHER WITHOUT CONNECTING THE EXHAUST HOSE.** The fume extractor will activate whenever the lid is opened.

Manual Cleaning of Paint Equipment

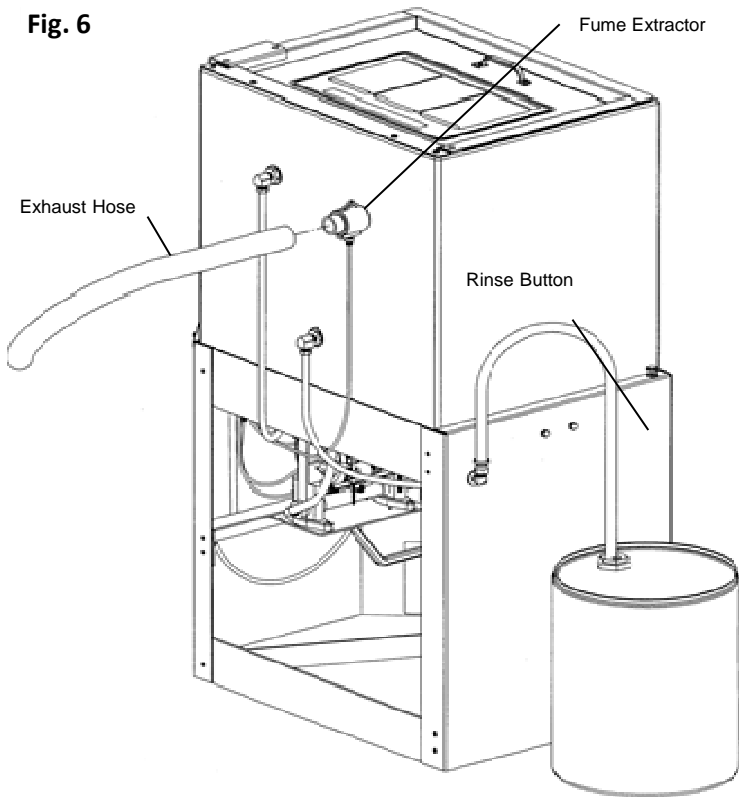
1. Set the pointer on the shield to the brush clean position. With the pointer in the brush clean position, the brush will be activated whenever the lid is opened.
2. To increase the flow through the brush, turn the knob of the flow control valve counterclockwise. To decrease the flow through the brush, turn the knob of the flow control valve clockwise.



Operating the Gun Washer

1. Make sure all wire trigger locks and other accessories are inside the gun washer tank.
2. If washing only one set of equipment, place empty cans over the unused nozzles and/or stem supports to prevent solvent spray from hitting the underside of the gun washer lid.
3. Close the gun washer lid.
4. Set the pointer to Gun Clean.
5. Turn the timer knob clockwise 90 degrees to the ON position to start the gun washer. The gun washer will run for 90 seconds. Turning the timer knob less than 90 degrees will reduce the timing cycle. Paint equipment will clean in 60 to 90 seconds.
6. If the lid is opened prior to the end of the timing cycle, the safety air cutoff switch will stop the gun washer. The gun washer will start again when the lid is closed if time remains on the timer.
Note: Open and close the lid slowly to minimize solvent vapor escape.
7. Remove the equipment from the gun washer and wipe off any remaining solvent. The gun hanger on the front of the stand can be used to dry the guns.

Fig. 6



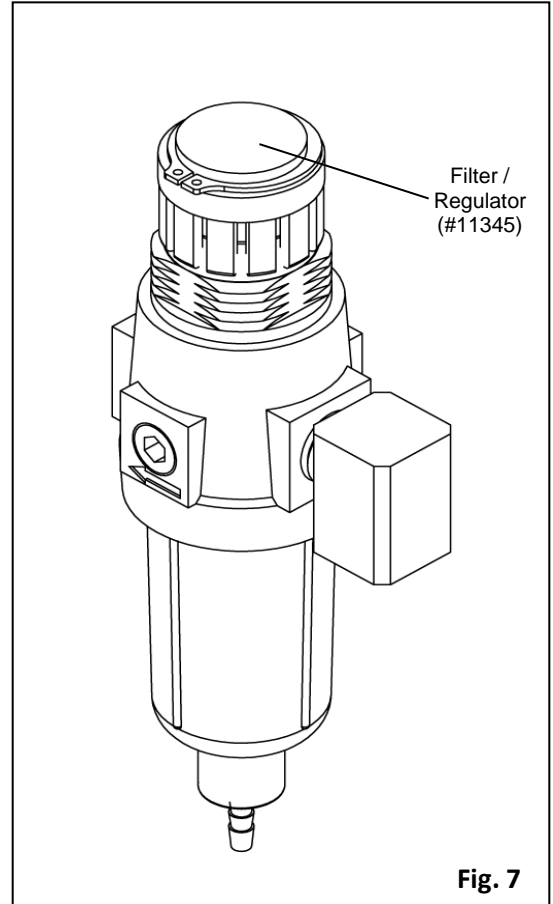
Preventative Maintenance

To keep your machine working efficiently, please follow these directions.

- 1) ALWAYS drain excess paint from cup or pot before placing in gun washer.
- 2) Drain paint sludge from gun washer tank weekly. Do this after a weekend so that it has settled. Open ball valve and drain until clear solution flows. Add cleaning solution to fill 1" above intake filter.
- 3) Replace Filter/Regulator yearly. (#11345)
- 4) Change cleaning solution completely when objects being cleaned become tacky to the touch.
- 5) Clean inside of tub and intake filter before filling with cleaning solution.

CAUTION

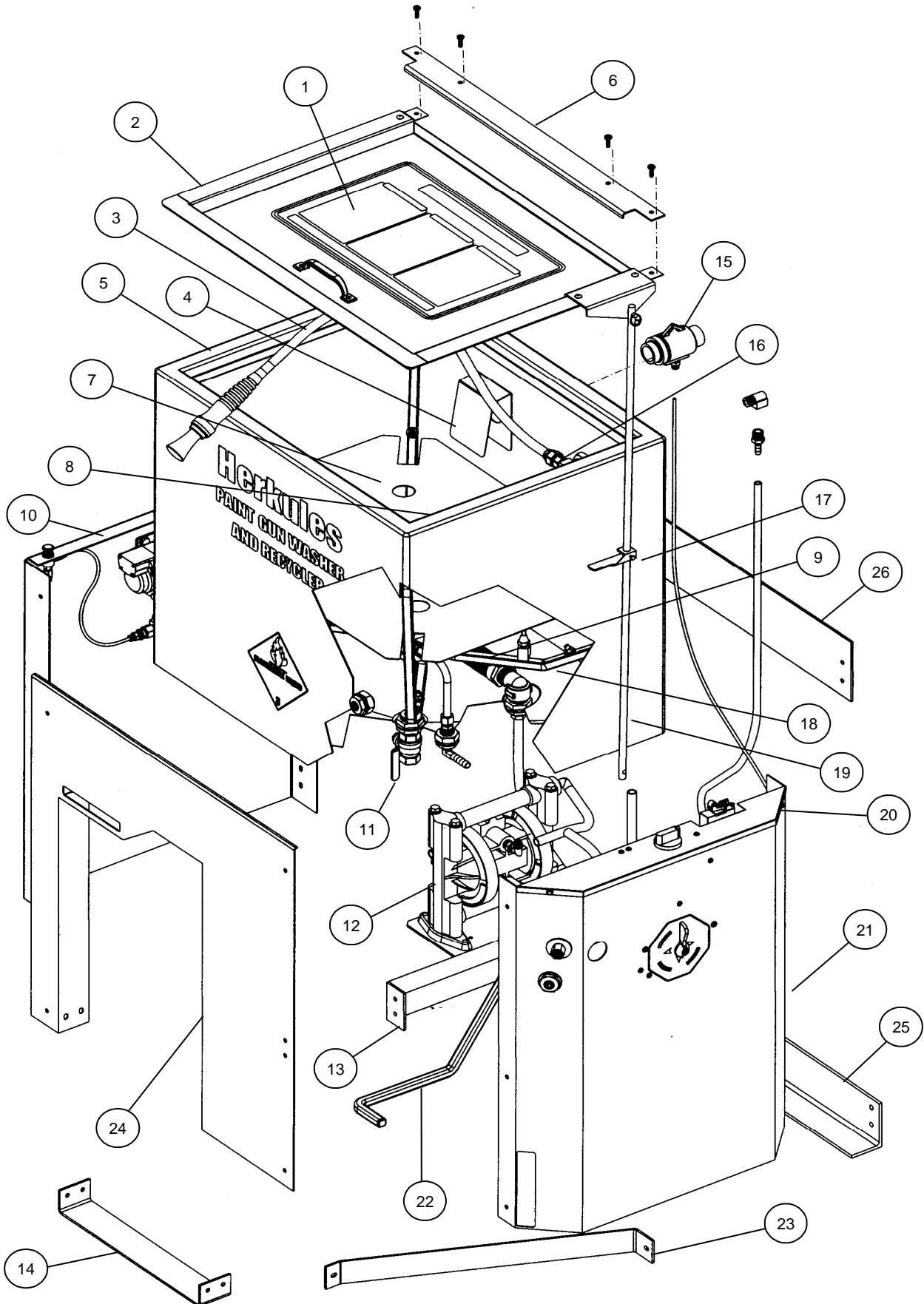
Do not change the setting of the filter/regulator. This could damage the filter/regulator or pump



Troubleshooting

Problem	Possible Solution
Gun washer will not turn on.	<ol style="list-style-type: none"> 1 Make sure the air line is properly connected with 90-120 psi. 2 Make sure lid is fully closed. Make sure the limit valve on the pump bracket is closed in the downward position. 3 Check all air connections to ensure that there are no leaks. 4 Make sure timer cam is engaging the limit valve on the right front leg. Make sure timer cam is engaging the limit valve (#M1C) on the shield assembly. 5 Make sure timer is on and functioning correctly.
Gun washer turns on but pumps slowly or not at all.	<ol style="list-style-type: none"> 1 Make sure intake filter (#12491) is not clogged (Clean or replace). 2 Make sure the air line is properly connected with 90-120 psi. 3 Check all air connections to ensure that there are no leaks. 4 Drain filter/regulator of water. See number 2 of PREVENTATIVE MAINTENANCE. 5 Make sure there are 5 gallons of clean solvent in the gun washer. The solvent should be an inch above the intake filter (#12491). 6 Make sure lid is fully closed. Make sure the limit valve on the pump bracket is closed in the downward position. 7 Make sure manifold nozzles and stem supports are not clogged.
Gun washer will not shut off	<ol style="list-style-type: none"> 1 Make sure timer cam (#M230-003) is moving. If its not, slightly loosen the nuts holding the limit valve (#M1C) on the shield. Reposition valve and tighten nuts.
Rinse cycle will not work.	<ol style="list-style-type: none"> 1 Check the level of the rinse solvent. 2 Check all fluid connections to ensure that there are no leaks.
No flow through the manual brush.	<ol style="list-style-type: none"> 1 Clean or replace the brush filter [see fig. 5]. 2 Make sure the indicator on the side is set to "brush clean"

Parts Layout for G415

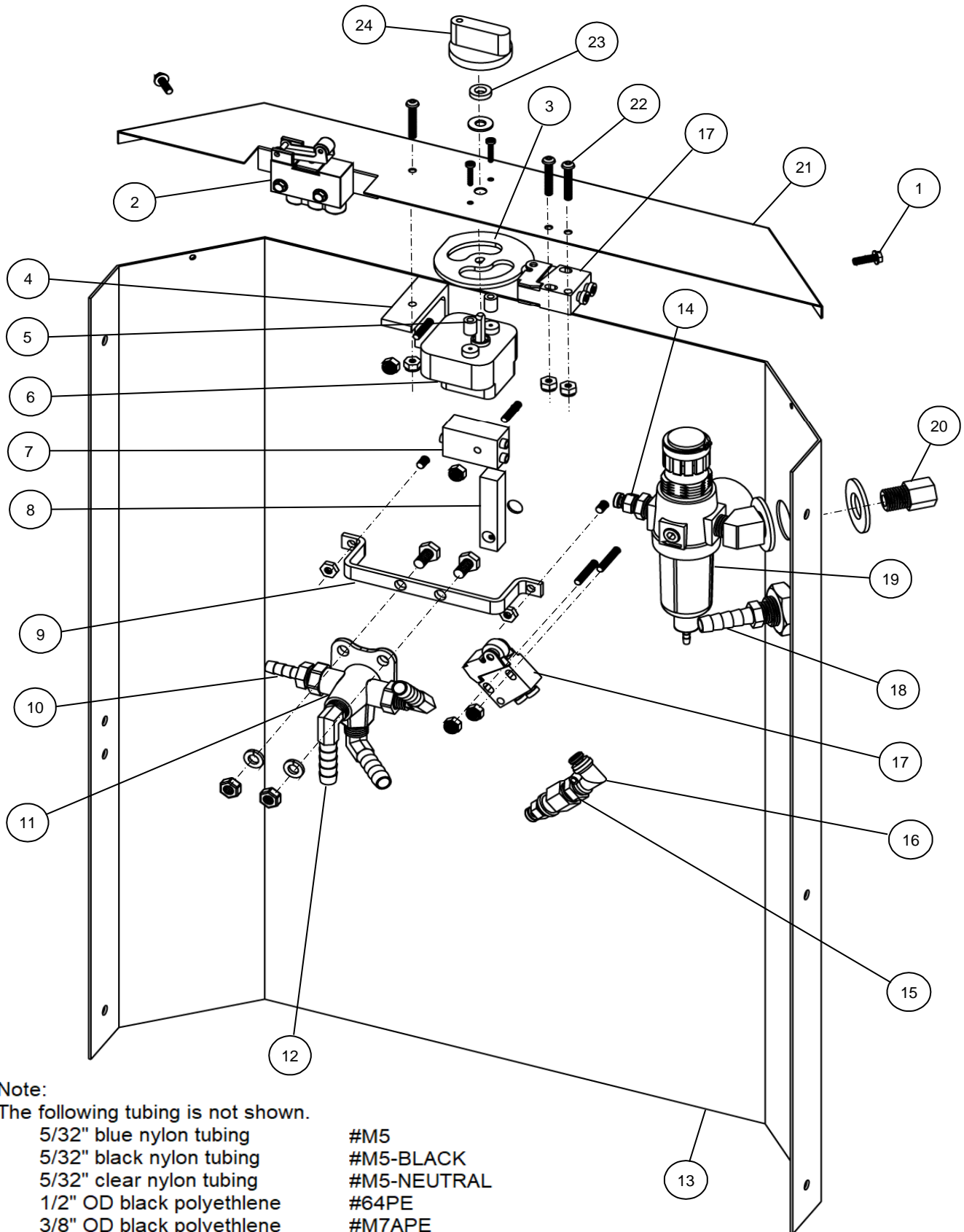


Parts Layout for G415

Part #	Description	Quantity
1	1001709 Lid Sticker	1 EA
2	10444 Lid Assembly	1 EA
3	10737 Brush Assembly	1 EA
4	11049 Guard	1 EA
5	10099 Tank Assembly	1 EA
6	11051 Lid Stop	1 EA
7	25D Divider	1 EA
8	22BA Trigger Lock (Not Shown)	2 EA
9	12491 Intake Filter Assembly	1 EA
10	10637 Panel Assembly	1 EA
11	6 Ball Valve	1 EA
12	12598 338 Pump Assembly	1 EA
13	10638 Pump Bracket	1 EA
14	10923 Front Brace	1 EA
15	10616 Fume Extractor	1 EA
16	1003172 Flow Control Valve	1 EA
17	28 Actuator	1 EA
18	12596 Manifold Assembly	1 EA
19	1002573 Lid Rod	1 EA
20	11215 Shield	1 EA
21	12597 Panel Assembly	1 EA
22	1001099 Foot Pedal	1 EA
23	10925 Center Brace	1 EA
24	1001002 Front Panel	1 EA
25	10924 Back Brace	1 EA
26	10639 Upper Brace	1 EA

See fig. 2

G415 Panel Assembly #12597 Layout



Note:

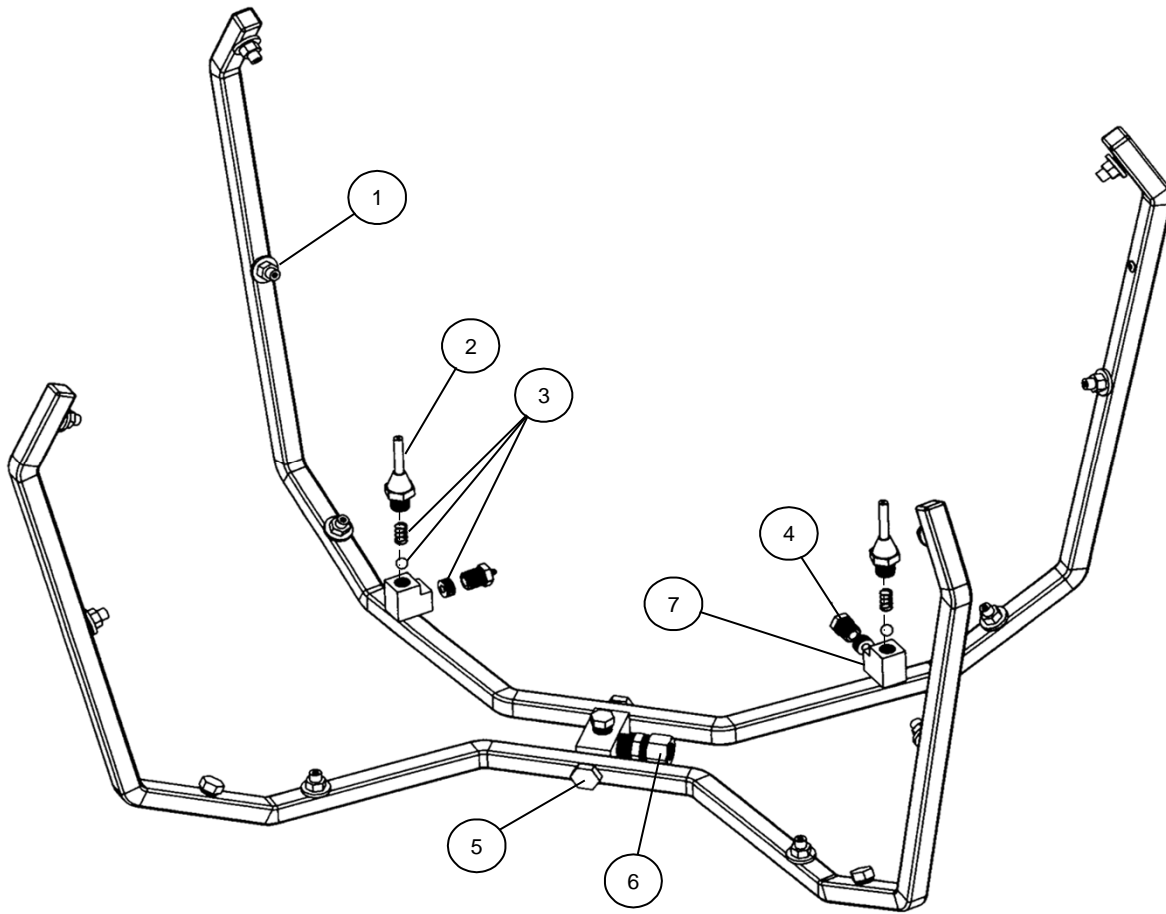
The following tubing is not shown.

- | | |
|----------------------------|-------------|
| 5/32" blue nylon tubing | #M5 |
| 5/32" black nylon tubing | #M5-BLACK |
| 5/32" clear nylon tubing | #M5-NEUTRAL |
| 1/2" OD black polyethylene | #64PE |
| 3/8" OD black polyethylene | #M7APE |

G415 Panel Assembly Layout

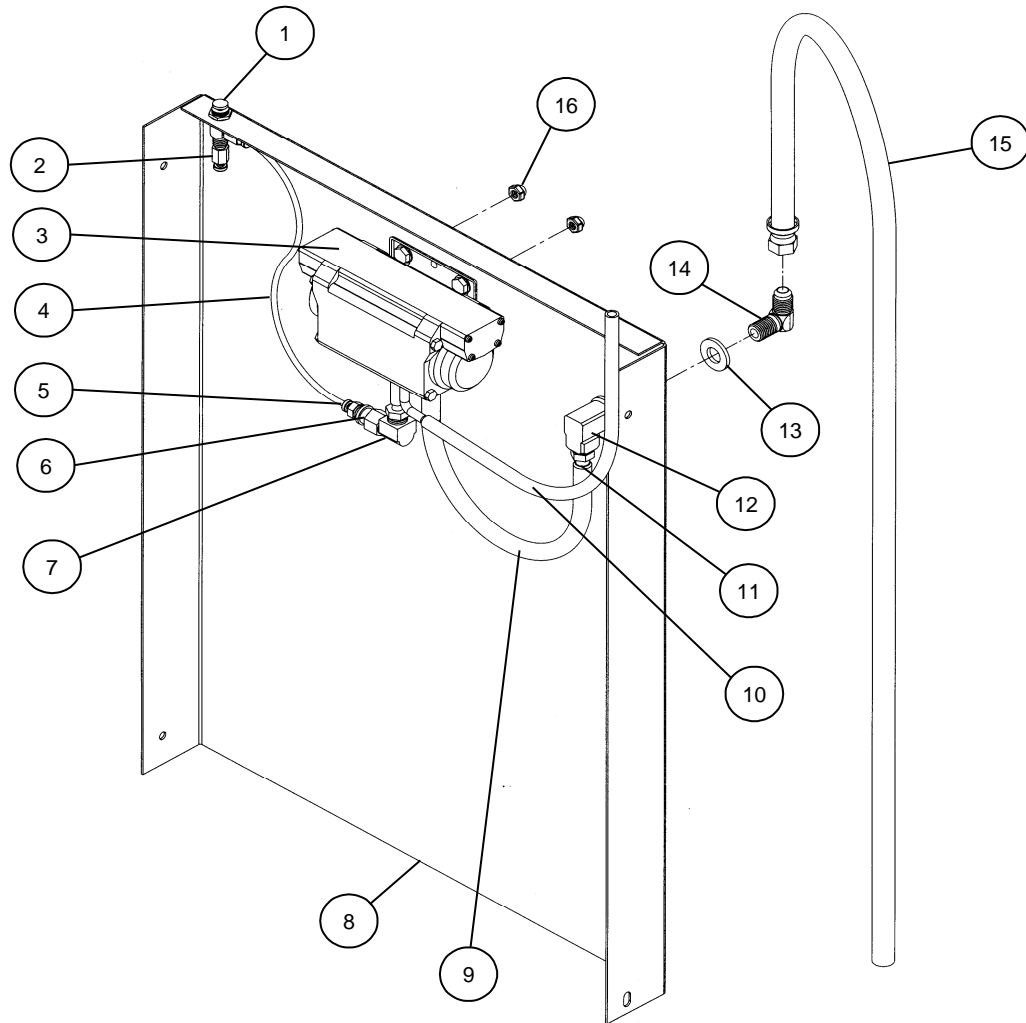
Part #	Description	Quantity
1	005-119 Hex Head Screw	2 EA
2	1000905 Control Valve 3 port	1 EA
3	M230-003 Timer Cam	1 EA
4	13149 Support Bracket	1 EA
5	M230-004 Spacer	2 EA
6	1007592 Timer	1 EA
7	1000851 Valve 5/32	1 EA
8	1000907 Actuator	1 EA
9	11217 Mounting Bracket	1 EA
10	990 Hose Barb	1 EA
11	C26 3-Way Valve	1 EA
12	1006461 Hose Barb	3 EA
13	1001000 Panel	1 EA
14	T4 Tube Fitting	2 EA
15	C7 Reducing Coupler	1 EA
16	T25 Tube Fitting	1 EA
17	M1C Limit Valve	2 EA
18	57 Hose Barb	1 EA
19	11345 Filter/Regulator	1 EA
20	67 Adapter	1 EA
21	11215 Stainless Shield Cap	1 EA
22	002-171 Socket Screw	7 EA
23	M230-005 Spacer	2 EA
24	M230-002 Timer Knob	1 EA

G415 Manifold Layout

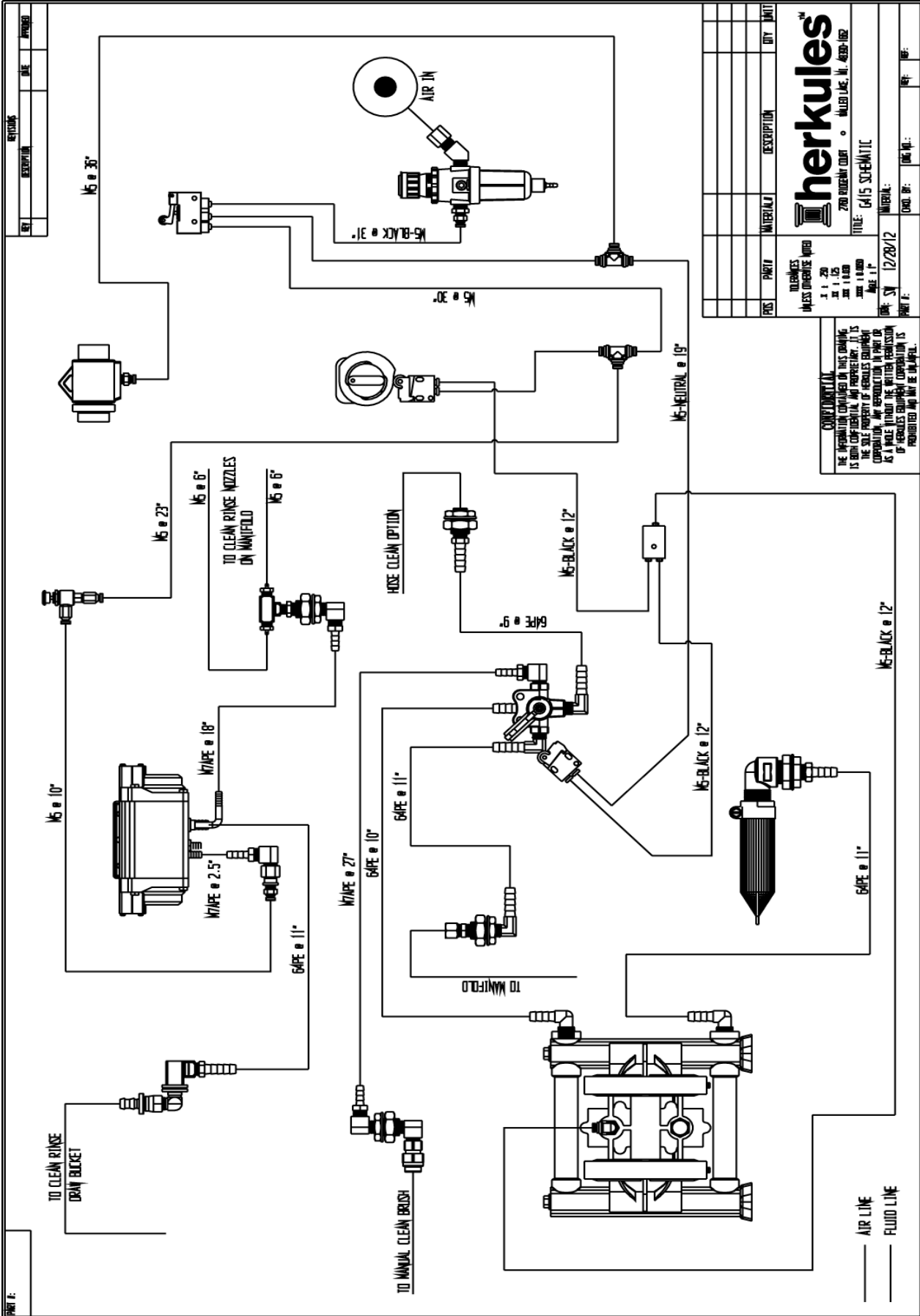


Part #	Description	Quantity
1	54P1 Jet Nozzle	12 EA
2	53A Stem Support	2 EA
3	005-145 Check Ball Assembly	2 EA
4	T24 Tube Fitting	2 EA
5	002-136S Manifold Bolt	2 EA
6	002-143 Connector	1 EA
7	C12D Street Tee	2 EA

G415 Panel Assembly #10637 Layout



Part #	Description	Quantity
1	M2 Limit Valve 10-32 port	1 EA
2	T3 Tube Fitting	1 EA
3	318 Diaphragm Pump	1 EA
4	M5 5/32" Nylon Tubing	11 IN
5	T4 Tube Fitting	1 EA
6	C7 Reducing Coupler	1 EA
7	002-131 Street Elbow	1 EA
8	1001001 Panel	1 EA
9	64PE 1/2" Polyethylene Tubing	11 IN
10	M7APE 3/8" Polyethylene Tubing	20 IN
11	57 Hose Barb	1 EA
12	C4B Elbow	1 EA
13	85I Flat Washer 1/2"	1 EA
14	1002921 Connector Elbow	1 EA
15	18473 Hose Assembly	20.5 IN
16	008-244 Acorn Nut	2 EA



REV	DESCRIPTION	DATE	APPROVED

PIS	PART #	MATERIAL	DESCRIPTION	QTY	UNIT

herkules[™]

HERKULES
 PRESSURE WASHING
 11 28
 11 105
 11 1000
 11 1000
 11 1000
 11 1000

CONFIDENTIAL
 THE INFORMATION CONTAINED IN THIS DRAWING IS BOTH CONFIDENTIAL AND PROPRIETARY. IT IS THE SOLE PROPERTY OF HERKULES EQUIPMENT CORPORATION. ANY REPRODUCTION IN PART OR AS A WHOLE WITHOUT THE WRITTEN PERMISSION OF HERKULES EQUIPMENT CORPORATION IS PROHIBITED AND MAY BE UNLAWFUL.

PART #:

