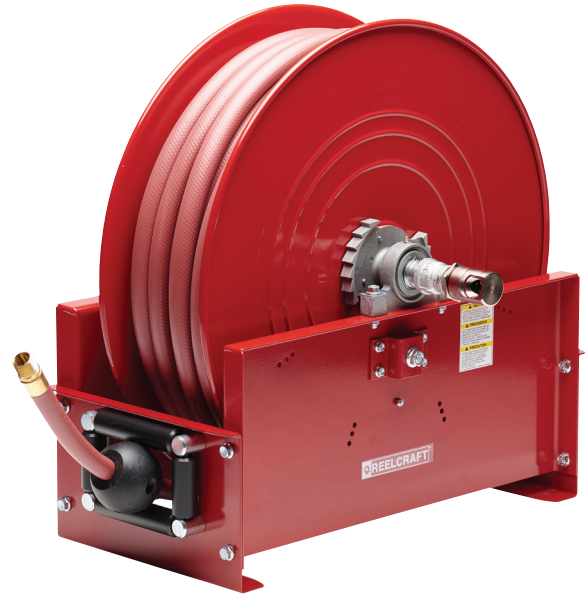


# Operating Instructions

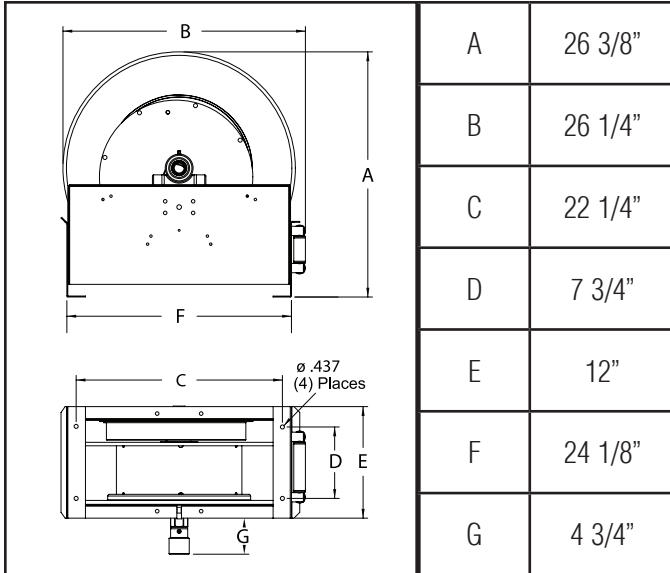
## Series E9000 Spring Driven Hose Reels

Low Pressure Model Numbers:

E9200 OLP      E9305 OLP      E9450 OLP  
E9275 OLP      E9399 OLP      E9400 OLP  
E9299 OLP      E9350 OLP  
E9375 OLP



### Dimensions



### SAFETY

1. Models designed for fuel are coded with the prefix "F" i.e., "FE9400 OLP." Check name plate on the reel before installing.
2. Do not use reel at higher pressures or temperatures than listed on the back of this bulletin.
3. Remove all spring tension before beginning disassembly process.
4. Reel spring motor case is permanently sealed. Any attempt to remove the spring motor may cause serious injury.

#### INSTALLATION:

The swivel union is packed separately in the reel carton, use teflon tape to assure a satisfactory seal. A flexible hose connection must be used between the hose reel inlet and the source of supply to prevent possible misalignment and binding. Non flexible connections will void the warranty, pressure rating of inlet hose must be equal to or more than the pressure rating of the reel. Consult Reelcraft for proper spring when installing reels above 16 ft.

#### LUBRICATION:

Hose reel spring and bearings are factory lubricated and require no further lubrication.

#### REPLACING HOSE:

1. Wind spool flange clockwise-facing swivel-until spring is tight.
2. Back off three turns and latch.
3. Insert hose through roller guide.
4. Connect hose fitting to female outlet ell.

#### ADJUSTMENTS:

To adjust spring tension, add or remove wraps of hose from the spool, one wrap at a time until desired tension is obtained.

#### REPAIRS:

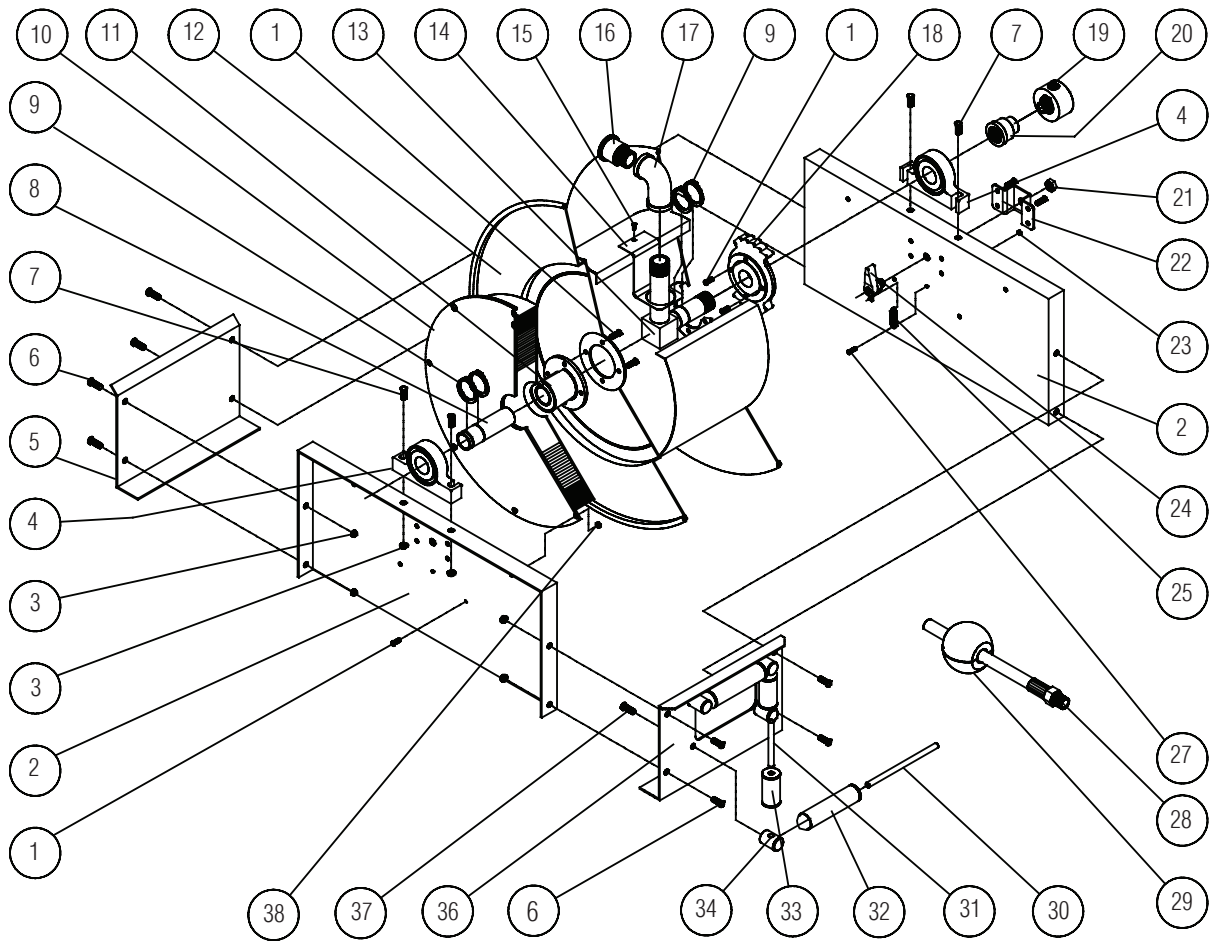
Extensive repairs should be performed only by an authorized serviceman or factory to avoid damage which may void your warranty. Remove all spring tension before beginning disassembly process.

#### MODIFICATION:

Hose latching mechanism can be removed for constant tension applications.

Form# 613-193 Rev: 6/2023

## Series E9000 Spring Driven Hose Reels



| Item # | Part #  | # Req | Description               | Item # | Part #       | # Req | Description              |
|--------|---------|-------|---------------------------|--------|--------------|-------|--------------------------|
| 1      | S2-41   | 16    | 1/4-20 x 1/2" hex screw   | 22     | 260934       | 1     | Latch bracket            |
| 2      | 270009  | 2     | Side frame                | 23     | S82-15       | 1     | 10-32 x 3/8" nyloc nut   |
| 3      | S281-6  | 12    | 3/8-16 hex flange nut     | 24     | S600454      | 1     | Latch pawl assembly      |
| 4      | S600416 | 2     | Pillow block              | 25     | S260067      | 1     | Latch spring             |
| 6      | S44-2   | 8     | 3/8-16 x 5/8" mach. screw | 27     | S393-2       | 1     | 10-32 shoulder screw     |
| 7      | S44-8   | 4     | 3/8-16 x 1 3/4" screw     | 30     | S270016      | 2     | Guide roller pin - long  |
| 8      | 602377  | 1     | Support shaft             | 31     | S270015      | 2     | Guide roller pin - short |
| 9      | S140-34 | 6     | Snap ring                 | 32     | 262436-5.468 | 2     | Guide roller             |
| 13     | 602364  | 1     | Inlet tube                | 33     | 262436-2.968 | 2     | Guide roller             |
| 14     | 270029  | 1     | Hose outlet support       | 34     | S270014      | 4     | Guide roller post        |
| 15     | S32-136 | 1     | #10 x 3/8" self tap screw | 36     | 270011       | 1     | Hose guide roller plate  |
| 17     | 270028  | 1     | 90° female NPT ell        | 37     | S2-51        | 4     | 5/16-18 x 1/2" hex screw |
| 18     | 260889  | 1     | Latch ratchet             | 38     | S281-4       | 8     | 1/4-20 hex nut           |
| 21     | S280-8  | 1     | 1/2-20 hex flange nut     |        |              |       |                          |

## Series E9000 Spring Driven Hose Reels

| Item # | Description                 | # Req | E9200 OLP  | E9275 OLP  | E9299 OLP   | E9350 OLP  |
|--------|-----------------------------|-------|------------|------------|-------------|------------|
| 5      | End frame support           | 1     | 270012     | 270012     | 270012      | 270012     |
| 10     | Spring case assembly        | 1     | S600413-1  | S600413-1  | S602722     | S600413-2  |
| 11     | Spring arbor                | 1     | 260888     | 260888     | 396188      | 260888     |
| 12     | Sheave assembly             | 1     | 600415     | 600415     | 600415      | 600415     |
| 16     | Reducing bushing            | 1     | 300080     | 300080     | 300080      | 270025     |
| 19     | Swivel assembly             | 1     | S600888-1  | S600888-1  | S600888-1   | S602026    |
| 20     | Reducing coupling           | 1     | S289-5     | S289-5     | S289-5      | S289-6     |
| 28     | Hose assembly               | 1     | None       | 601020-75  | 601020-100  | S601026-50 |
| 29     | Bumper stop assembly        | 1     | None       | 2-HR1005   | 2-HR1005    | 3-HR1005   |
| --     | Guide roller conversion kit | 1     | S602907-35 | S602907-35 | S602909-35  | S602907-35 |
| --     | Hose ID and length          | --    | None       | 1/2" x 75' | 1/2" x 100' | 3/4" x 50' |
| --     | Working pressure            | --    | 500 PSI    | 300 PSI    | 300 PSI     | 300 PSI    |
| --     | Max. temperature            | --    | 210 °F     | 150 °F     | 150 °F      | 150 °F     |

\*Hose guide roller position conversion kit allows the reel to be modified to a top wind (TW) or side wind (SW) position. All Series 9000 reels are supplied in the bottom wind (BW) position.

| Item # | Description                 | # Req | E9375 OLP  | E9305 OLP  | E9399 OLP   | E9400 OLP  | E9450 OLP  |
|--------|-----------------------------|-------|------------|------------|-------------|------------|------------|
| 5      | End frame support           | 1     | 270012     | 262104     | 262104      | 270012     | 270012     |
| 10     | Spring case assembly        | 1     | S600413-2  | S602722    | S602722     | S600413-2  | S600413-2  |
| 11     | Spring arbor                | 1     | 260888     | 396188     | 396188      | 260888     | 260888     |
| 12     | Sheave assembly             | 1     | 600415     | 601081     | 601081      | 600414     | 600414     |
| 16     | Reducing bushing            | 1     | 270025     | 270025     | 270025      | None       | None       |
| 19     | Swivel assembly             | 1     | S602026    | S602026    | S602026     | S600682    | S600682    |
| 20     | Reducing coupling           | 1     | S289-6     | S289-6     | S289-6      | None       | None       |
| 28     | Hose assembly               | 1     | S601026-75 | None       | S601026-100 | None       | S601027-50 |
| 29     | Bumper stop assembly        | 1     | 3-HR1005   | None       | 3-HR1005    | None       | 4-HR1005   |
| --     | Guide roller conversion kit | 1     | S602907-35 | S602909-35 | S602909-35  | S602907-35 | S602907-35 |
| --     | Hose ID and length          | --    | 3/4" x 75' | None       | 3/4" x 100' | None       | 1" x 50'   |
| --     | Working pressure            | --    | 300 PSI    | 500 PSI    | 300 PSI     | 500 PSI    | 300 PSI    |
| --     | Max. temperature            | --    | 150 °F     | 210 °F     | 150 °F      | 210 °F     | 150 °F     |

\*Hose guide roller position conversion kit allows the reel to be modified to a top wind (TW) or side wind (SW) position. All Series 9000 reels are supplied in the bottom wind (BW) position.