

# Operating Instructions

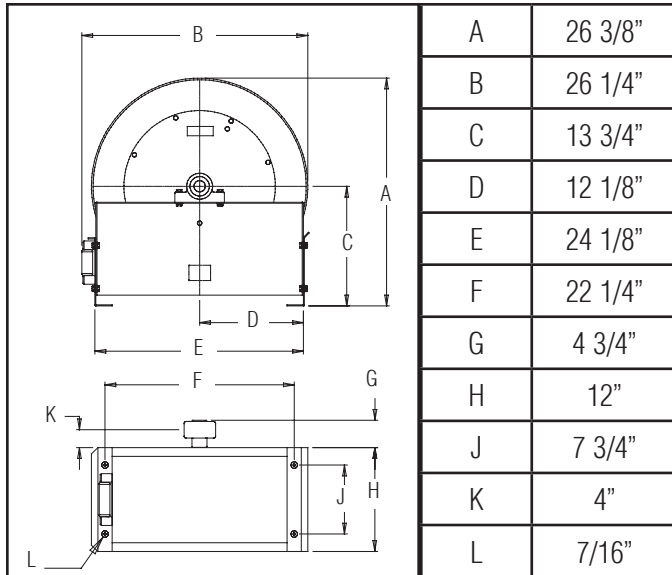
## Series E9000 Spring Driven Hose Reels

Medium Pressure Model Numbers:

E9200 OMP      E9300 OMP      E9400 OMP  
E9275 OMP      E9330 OMP      E9450 OMP  
E9350 OMP



### Dimensions



Four 7/16" diameter mounting holes

### SAFETY

1. Models designed for fuel are coded with the prefix "F" i.e., "FE9400 OMP." Check name plate on the reel before installing.
2. Do not use reel at higher pressures or temperatures than listed on the back of this bulletin.
3. Remove all spring tension before beginning disassembly process.
4. Reel spring motor case is permanently sealed. Any attempt to remove the spring motor may cause serious injury.

#### INSTALLATION:

The swivel union is packed separately in the reel carton, use teflon tape to assure a satisfactory seal. A flexible hose connection must be used between the hose reel inlet and the source of supply to prevent possible misalignment and binding. Non flexible connections will void the warranty, pressure rating of inlet hose must be equal to or more than the pressure rating of the reel. Consult factory for proper spring when installing reels above 16 ft.

#### LUBRICATION:

Hose reel spring and bearings are factory lubricated and require no further lubrication.

#### REPLACING HOSE:

1. Wind spool flange clockwise-facing swivel-until spring is tight.
2. Back off three turns and latch.
3. Insert hose through roller guide.
4. Connect hose fitting to female outlet ell.

#### ADJUSTMENTS:

To adjust spring tension, add or remove wraps of hose from the spool, one wrap at a time until desired tension is obtained.

#### REPAIRS:

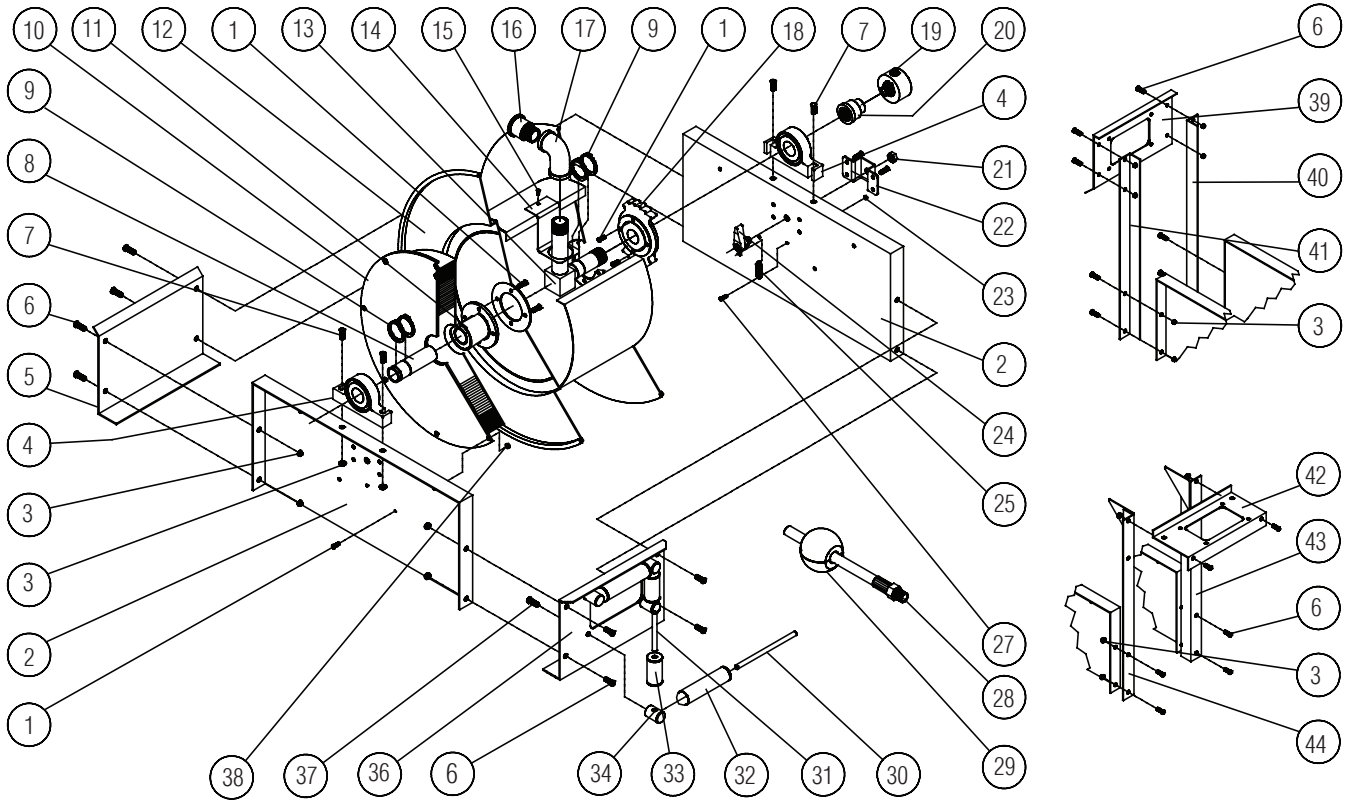
Extensive repairs should be performed only by an authorized serviceman or factory to avoid damage which may void your warranty. Remove all spring tension before beginning disassembly process.

#### MODIFICATION:

Hose latching mechanism can be removed for constant tension applications.

Form# 614-193 Rev: 8/2019

# Series E9000 Spring Driven Hose Reels



Item #	Part #	# Req	Description	Item #	Part #	# Req	Description	Item #	Part #	# Req	Description
1	S2-41	16	1/4-20 x 1/2" hex screw	15	S32-136	1	#10 x 3/8" self tap screw	32	262436-5.468	2	Guide roller
2	270009	2	Side frame	17	270039	1	90° female NPT ell	33	262436-2.968	2	Guide roller
3	S281-6	12	3/8-16 hex flange nut	18	260889	1	Latch ratchet	34	S270014	4	Guide roller post
4	S600416	2	Pillow block	21	S280-8	1	1/2-20 hex flange nut	36	270011	1	Hose guide roller plate
5	270012	1	End frame support	22	260934	1	Latch bracket	37	S2-51	4	5/16-18 x 1/2" hex screw
6	S44-2	8	3/8-16 x 5/8" mach. screw	23	S82-15	1	10-32 x 3/8" nyloc nut	38	S281-4	8	1/4-20 hex nut
7	S44-8	4	3/8-16 x 1 3/4" screw	24	S600454	1	Latch pawl assembly	39	270044	1	Guide roller plate SW
8	602377	1	Support shaft	25	S260067	1	Latch spring	40	270042	1	SW support bracket
9	S140-34	6	Snap ring	27	S393-2	1	10-32 shoulder screw	41	270042	1	SW support bracket
11	260888	1	Spring arbor	30	S270016	2	Guide roller pin - long	42	270044	1	Guide roller plate TW
13	602364	1	Inlet tube	31	S270015	2	Guide roller pin - short	43	263190	1	TW support bracket
14	270029	1	Hose outlet support					44	263189	1	TW support bracket

Item #	Description	# Req	E9200 OMP	E9275 OMP	E9300 OMP	E9330 OMP	E9350 OMP	E9400 OMP	E9450 OMP
10	Spring case assembly	1	600413-1	600413-1	S600413-2	S600413-2	S600413-2	S600413-2	S600413-2
12	Sheave assembly	1	600415	600415	600415	600415	600415	600414	600414
16	Reducing bushing	1	S174-112	S174-112	300055	300055	300055	None	None
19	Swivel assembly	1	S602033	S602033	S602026	S602026	S602026	S600682	S600682
20	Reducing coupling	1	S290-5	S290-5	S290-6	S290-6	S290-6	None	None
28	Hose assembly	1	None	S24-260043	None	S26-260043	S27-260043	None	602574-50
29	Bumper stop assembly	1	None	2-HR1005	None	3-HR1005	3-HR1005	None	4-HR1005
--	Hose ID and length	--	None	1/2" x 75'	None	3/4" x 30'	3/4" x 50'	None	1" x 50'
--	Working pressure	--	3250 PSI	3250 PSI	3000 PSI	1250 PSI	1250 PSI	3250 PSI	3250 PSI
--	Max. temperature	--	210 °F	210 °F	210 °F	210 °F	210 °F	210 °F	210 °F