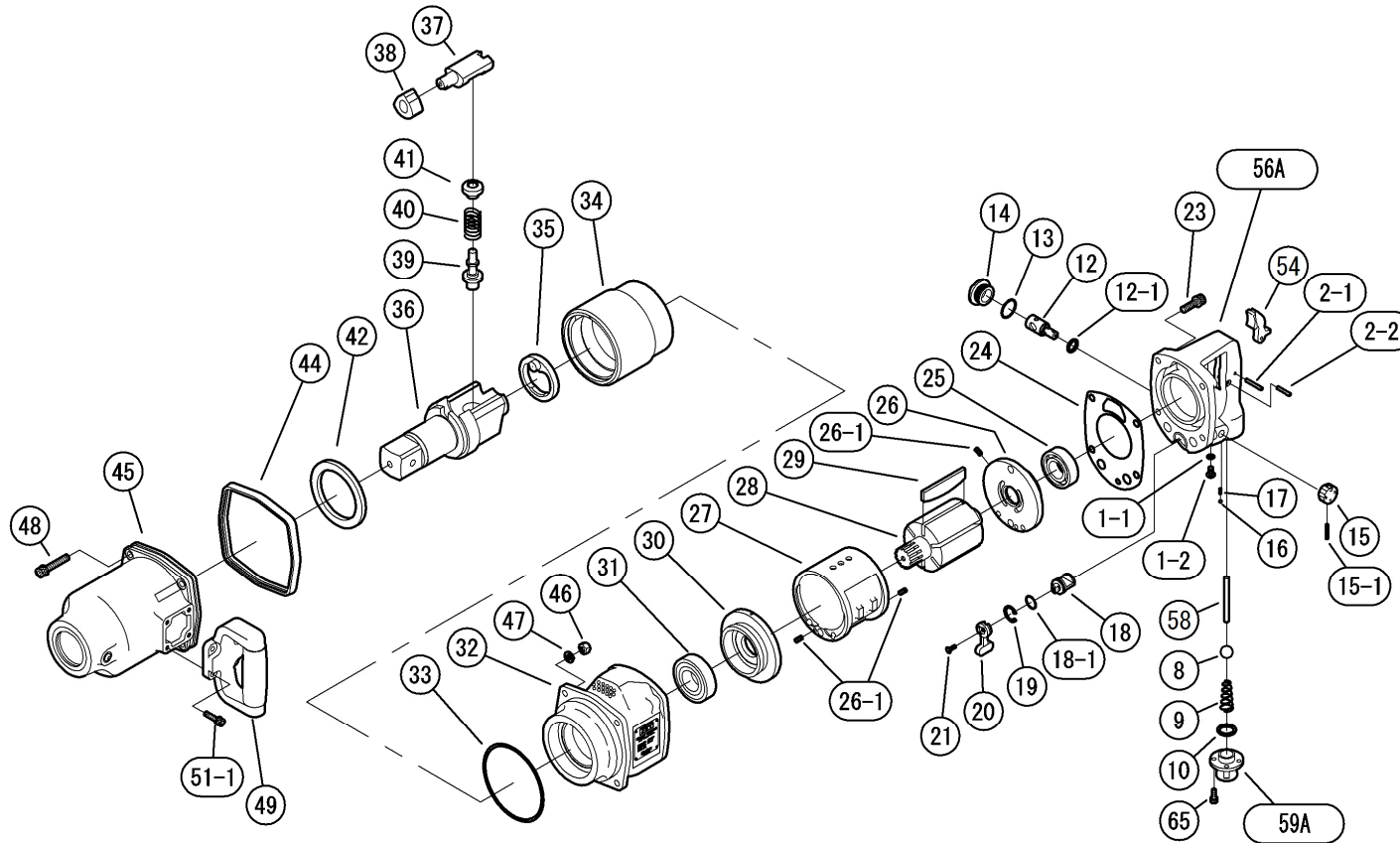




## Parts Breakdown for the JET-5000 1-1/2" Square Drive Impact Wrench



### JET

427 New Sanford Road  
LaVergne, Tennessee 37086  
Ph.: 800-274-6848  
www.jettools.com

**Part No. M-505955**  
Revision H1 11/2018  
Copyright © 2015 JET, a Division of JPW Industries, Inc.

## Parts List for the JET-5000 1-1/2" Square Drive Impact Wrench

Index No	Part No	Description	Size	Qty	Index No	Part No	Description	Size	Qty
1-1	Z040P6	O-Ring	JIS P-6, ID 5.8mm	1	29	Z550022	Rotor Vane		6
1-2	Z0846X8	Screw	M6x8	1	30	0550023	Front End Plate		1
2-1	Z0614X28	Pin	4x28mm	1	31	BB-6206Z	Ball Bearing	6206Z	1
2-2	Z0614X22	Pin	4x22mm	1	32	0550181C11	Motor Case CP		1
8	Z011518D	Throttle Valve		1	33	Z041S110	O-Ring	JIS S-110, ID 109.5	1
9	0132190	Throttle Valve Spring		1	34	0550026	Hammer Wheel		1
10	Z040P20	O-Ring		1	35	Z0550050	Retainer		1
12	0446017	Regulator Valve		1	36	0550030A	1/2" Square Drive Anvil		1
12-1	Z040P14	O-Ring	JIS P14, ID 13.8mm	1	37	0550028	Anvil Piece		1
13	Z041S26	O-Ring	JIS S-26, ID 25.5mm	1	38	0550027	Cam		1
14	04460391	Plug		1	39	0550052B	Plunger B		1
15	0442314	Regulator Valve Knob		1	40	0550053	Spring		1
15-1	Z0563X22	Pin	3x22mm	1	41	0550051B	Plunger A		1
16	SB-4MM	Steel Ball	4mm	1	42	0550029	Bushing		1
17	0114193	Knock Spring		1	44	0142071	Rear Rubber Protector		1
18	0142015B	Reverse Valve		1	45	0550182	Impact Housing CP		1
18-1	Z041S18	O-Ring	JIS S-18, ID 17.5mm	1	46	Z0918	Lock Nut	M8	4
19	Z03121	Retainer	RTW-21	1	47	Z0968X1	Washer	M8	4
20	0132915	Reverse Lever		1	48	Z0668X45A	Bolt	M8x45	4
21	Z0674X12	Screw	M4x12	1	49	0442387	Dead Handle CP		1
23	Z0668X25A	Bolt	M8x25	4	51-1	Z0666X20A	Bolt	M6x20	4
24	0142006B	Motor Housing Gasket		1	54	0345417	Throttle Lever		1
25	BB-6205	Rear Bearing	6205	1	56A	05501800DI02	Handle CP (NPT)		1
26	0132124	Rear End Plate		1	58	0132911I	Throttle Valve Pin		1
26-1	Z0565X10	Spring Pin	5x10mm	3	59A	0445011N	Inlet Bushing (NPT)		1
27	0140509	Cylinder		1	65	Z0665X14A	Bolt	M5x14	4
28	Z550021	Rotor		1					

To order parts or reach our service department, call 1-800-274-6848 Monday through Friday, 8:00 a.m. to 5:00 p.m. CST. Having the Model Number and Serial Number of your tool available when you call will allow us to serve you quickly and accurately.

**⚠ WARNING:** This product can expose you to chemicals including lead which is known to the State of California to cause cancer and birth defects or other reproductive harm. For more information go to <http://www.p65warnings.ca.gov>.

**⚠ WARNING:** Some dust, fumes and gases created by power sanding, sawing, grinding, drilling, welding and other construction activities contain chemicals known to the State of California to cause cancer and birth defects or other reproductive harm. Some examples of these chemicals are:

- lead from lead based paint
- crystalline silica from bricks, cement and other masonry products
- arsenic and chromium from chemically treated lumber

Your risk of exposure varies, depending on how often you do this type of work. To reduce your exposure to these chemicals, work in a well-ventilated area and work with approved safety equipment, such as dust masks that are specifically designed to filter out microscopic particles. For more information go to <http://www.p65warnings.ca.gov/> and <http://www.p65warnings.ca.gov/wood>.