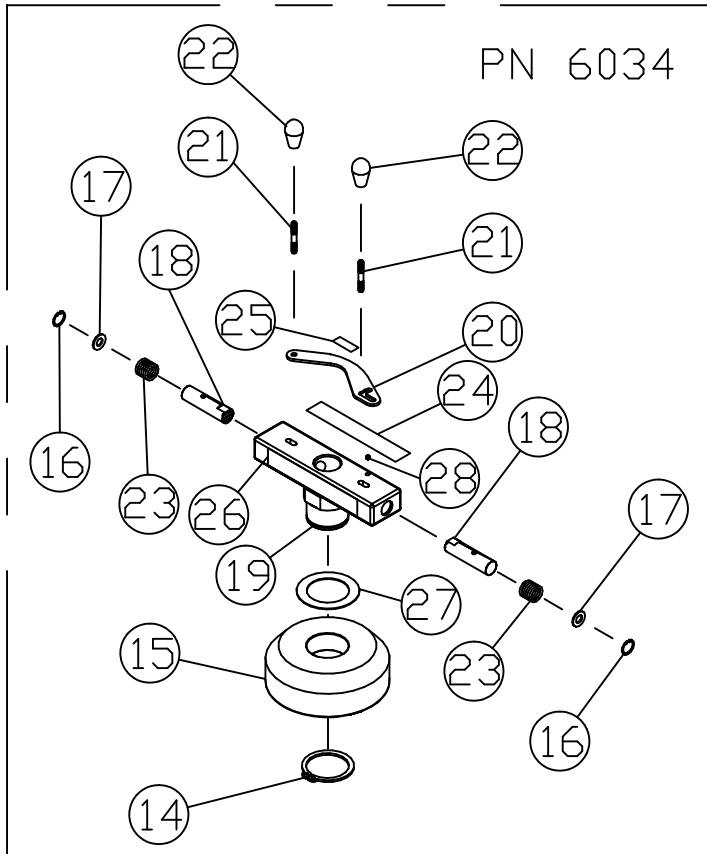
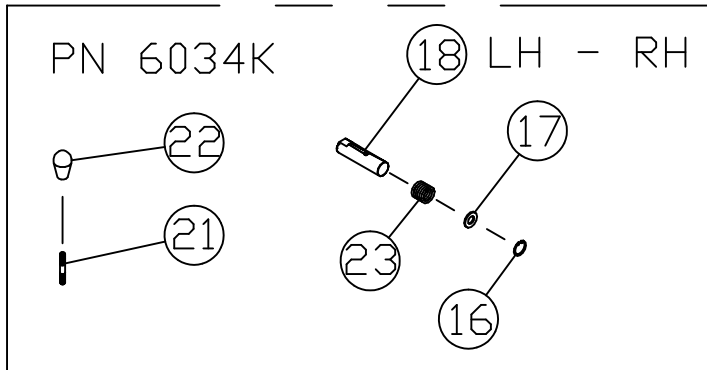


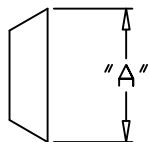
**SAF-TEE SIPING &
GROOVING INC.**

6030 QUICK MOUNT WHEEL LOCK

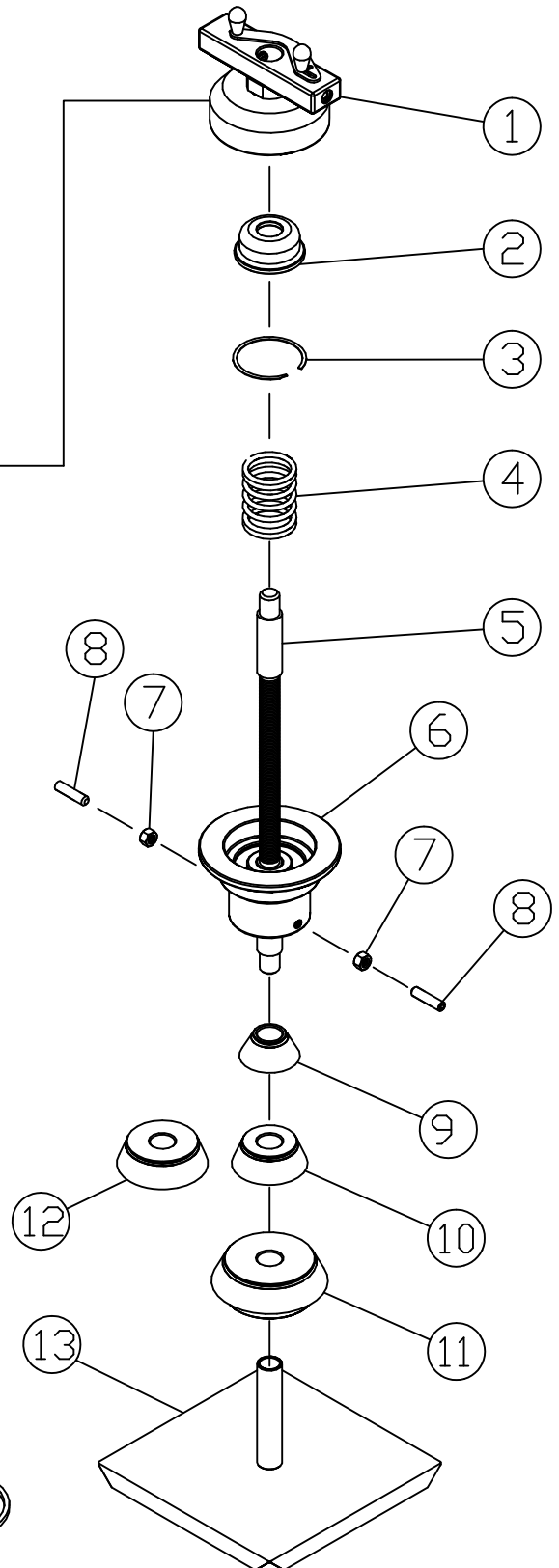
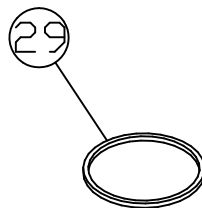
10-27-11

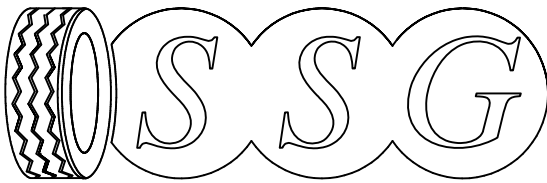


CONES PN 9-12



- PN 9 "A" = 3.00"
- PN 10 "A" = 3.75"
- PN 11 "A" = 5.75"
- PN 12 "A" = 4.50"





***SAF-TEE SIPING &
GROOVING INC.***

10-27-11

6030 QUICK MOUNT WHEEL LOCK

PARTS LIST			
ITEM	PART NO.	DESCRIPTION	QTY
1	6034	QUICK MOUNT LOCK HANDLE (CONSISTS OF ITEMS 14, 15, 16, 17, 18,) (19, 20, 21, 22, 23)	1
2	10980	SPRING COVER	1
3	11506	RETAINING RING - INTERNAL	1
4	10979	SPRING - 3.50 LG.	1
5	10955	SHAFT, MANDREL	1
6	10981	HUB, MAIN	1
7	535	NUT, HEX 1/2-13	2
8	1359	SET SCREW 1/2-13 X 2 AL HD CP PNT	2
9	10976	CONE - SMALL	1
10	10975	CONE - MEDIUM	1
11	10977	CONE - LARGE	1
12	10974	CONE - MEDIUM LARGE	1
13	6031	BASE STAND	1
14	10597	RETAINING RING - EXTERNAL 2" DIA.	1
15	10973	CUP, HANDLE RETAINING	1
16	11505	RETAINING RING - INTERNAL 3/4"	2
17	700	WASHER, 3/8"	2
18	10987 - R & L	SHAFT, PLUNGER	2
19	10978	HANDLE LOCK	1
20	10982	BAR, LOCKING	1
21	10983	STUD, KNOB	2
22	924	KNOB, PLASTIC	2
23	10716	SPRING 3/4" LG.	2
24	10993	DECAL - LOCKING INSTRUCTIONS	1
25	10988	DECAL - LOCK	1
26	10986	DECAL - MODEL NAME	1
27	11541	WASHER	1
28	11546	DETENT	1
29	6035	WHEEL PROTECTION KIT	1