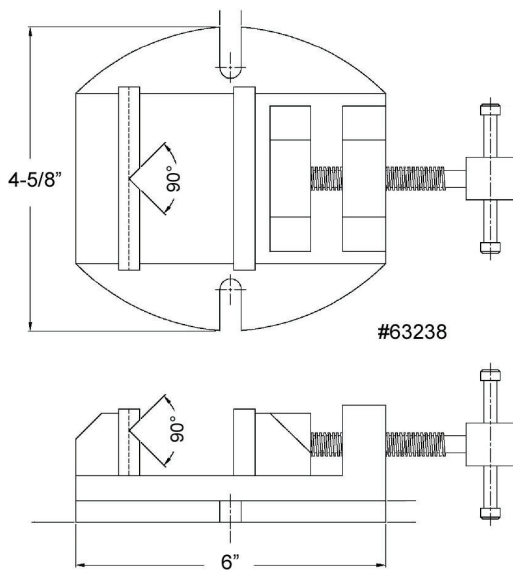
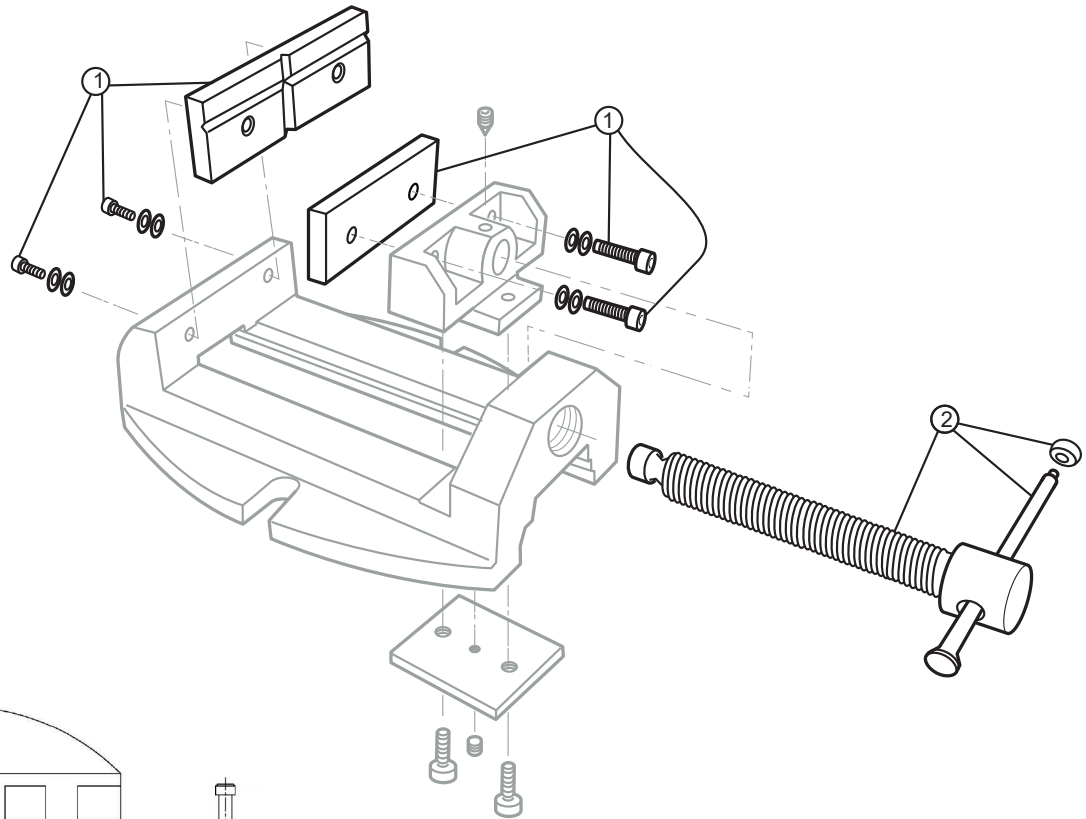




Versatile Drill Press - Continuous Nut Parts Diagram

3" Jaw Width; 2-3/4" Jaw Opening; 1-1/8" Jaw Depth

Stock #: 63238 Model #: 1335



#63238

#	Part	Description
1	63238-01	Set of Jaw Inserts, with screws and washers
2	63238-02	Clamp Screw



WARNING: This product can expose you to chemicals including lead which is known to the State of California to cause cancer and birth defects or other reproductive harm. For more information go to <http://www.p65warnings.ca.gov>.

WILTON

427 New Sanford Road
LaVergne, Tennessee 37086
Ph.: 800-274-6848
www.wiltontools.com

Part No. M-63238

Revision E 11/2019

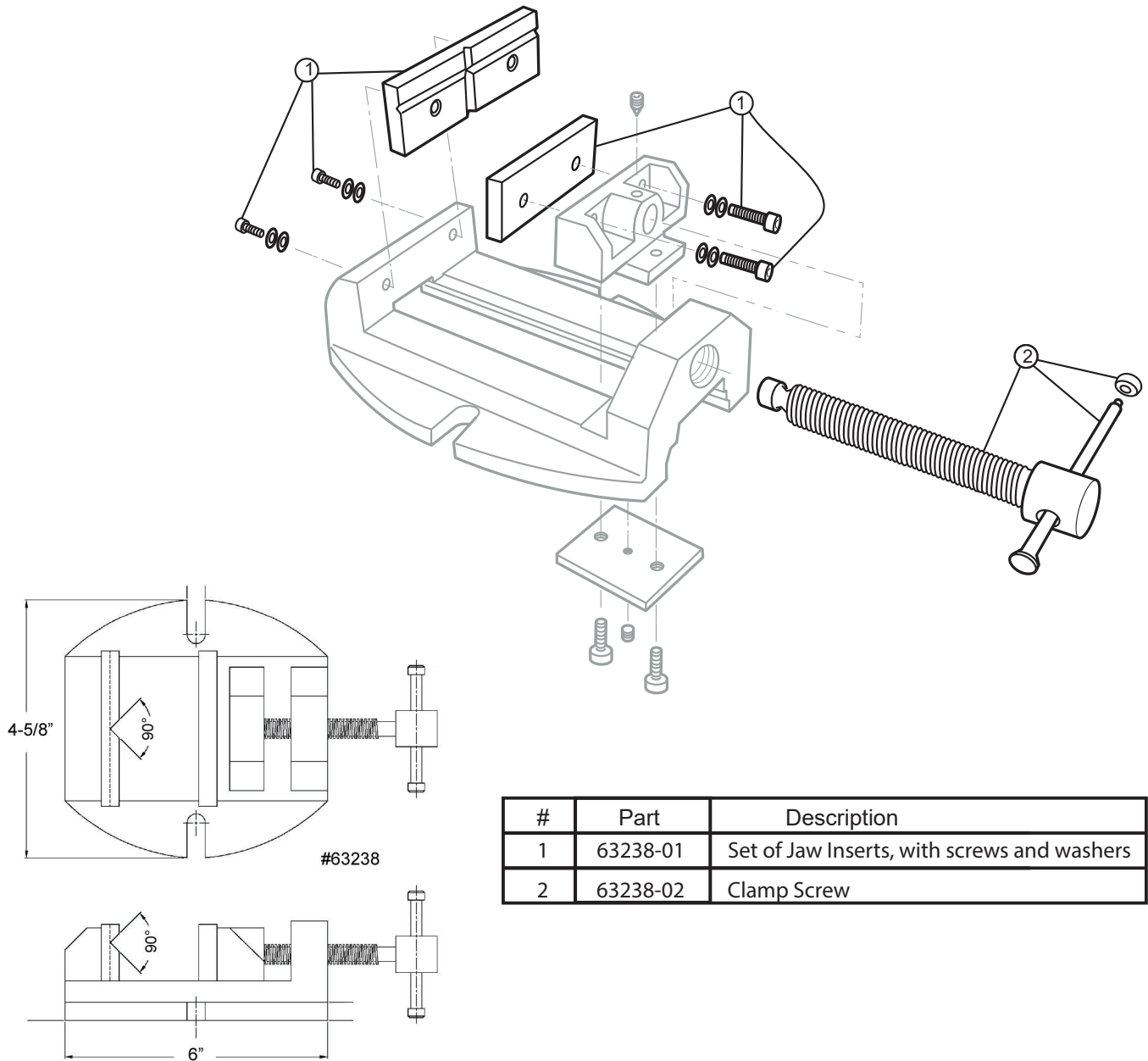
Copyright © 2014 WILTON, a Division of JPW Industries, Inc.



Versatile Drill Press - Continuous Nut Parts Diagram

3" Jaw Width; 2-3/4" Jaw Opening; 1-1/8" Jaw Depth

Stock #: 63238 Model #: 1335



WARNING: This product can expose you to chemicals including lead which is known to the State of California to cause cancer and birth defects or other reproductive harm. For more information go to <http://www.p65warnings.ca.gov>.

WILTON

427 New Sanford Road
LaVergne, Tennessee 37086
Ph.: 800-274-6848
www.wiltontools.com

Part No. M-63238

Revision E 11/2019

Copyright © 2014 WILTON, a Division of JPW Industries, Inc.