



TIRE SERVICE INTERNATIONAL

VP 18 AL Viper Bead Seater

buyTSI.com - 800.223.4540



Read this manual before operating

Tire Service International, LLC
3451 S. 40TH ST.
PHOENIX, AZ 85040

Office: 602.437.5020
Email: sales@buytsi.com
Fax: 602.437.5025

Contact us for any assistance

800.223.4540

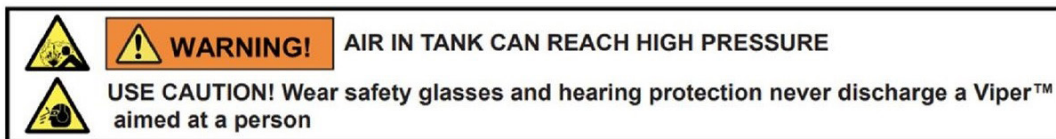
Revised: September 2021

Safety Requirements

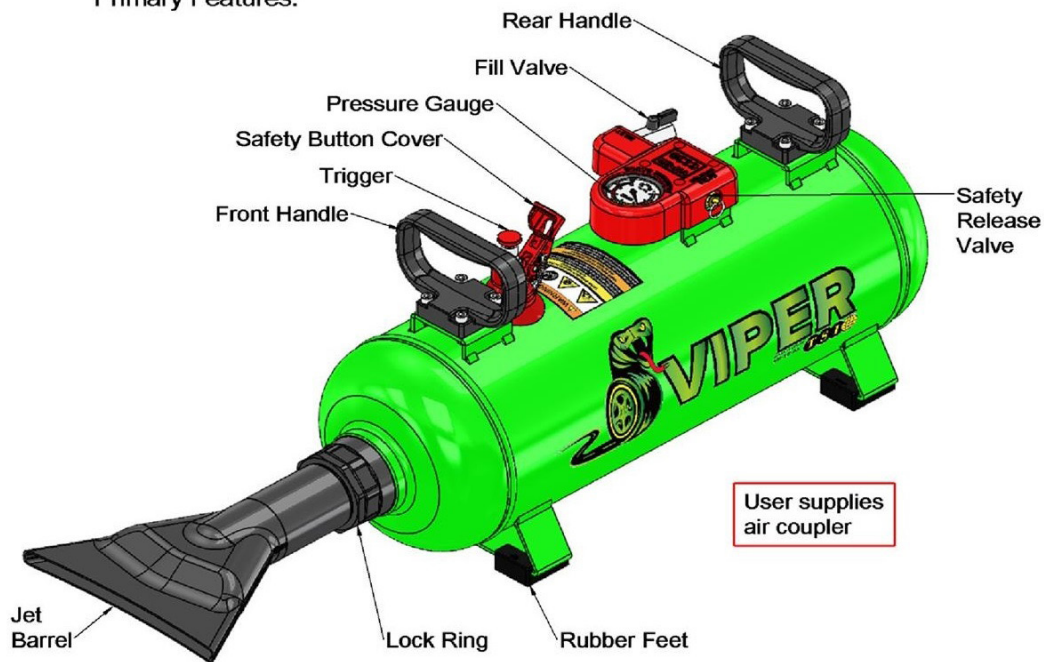
- 1. WARNING:** The instructions and warnings contained in this manual should be read and understood before using or operating this tool. Do not allow anyone to use or operate this tool until they have read this manual and have developed a thorough understanding of how this tool works. Failure to observe any of the following instructions could result in severe personal injury to tool user and bystanders, or cause damage to the tool and property. Keep this manual for future reference.
- 2. WARNING - Wear Personal Protective Equipment:** Safety goggles, gloves, non-skid shoes and hearing protection.
- 3. WARNING -** Keep bystanders and children out of the work area while operating this tool.
- 4. WARNING -** Always keep work area clean, uncluttered, and well lit. Do Not work on floor surfaces that are slippery.
- 5. WARNING -** Do not operate this tool if you are tired or under the influence of alcohol, drugs, or medications that could affect your ability to use the tool properly.
- 6. WARNING -** Air under pressure can cause severe injury. Never point an air tool at people or animals.
- 7. WARNING -** Detach from air supply and release all air pressure before installing, removing or adjusting any accessory on this tool or performing maintenance. Failure to do so could result in injury.
- 8. WARNING -** Do not open the Viper™ Bead Seater air release valve when connecting the air supply hose. When the Viper™ Bead Seater is not in use, discharge air from tank. Store in a clean, dry location.
- 9. WARNING -** Never transport the Viper™ Bead Seater with air in the tank.
- 10. WARNING -** Do not tamper with the safety valve. Do not modify or alter the bead seater in any way.
- 11. WARNING -** Inspect before each use. Do not use if broken, bent, cracked or damaged parts are noted (including warning label). If the unit appears damaged in any way, is missing parts, or operates abnormally, it should be removed from service immediately. All units that have been dropped, impacted suddenly, or dented should be removed from service.
- 12. WARNING -** Only Viper™ Bead Seating replacement parts should be used on the unit. Decals and parts are available through your Distributor or the manufacturer.
- 13. WARNING -** The warnings, cautions and instructions discussed in this manual cannot cover all possible conditions and situations that may occur. It must be understood that common sense and caution are factors which cannot be built into this product, but must be applied by the operator.
- 14. WARNING -** Operator should be familiar with all OSHA regulations (including 29 CFR 1910.177) pertaining to mounting, demounting and inflating all tires.

General Information

1. Remove contents from box and assemble Jet Barrel onto tank.
2. Rear handle can be rotated to accommodate user preference by removing screws.
3. Read and follow instructions for optimum use.
4. DO NOT use the Viper™ for anything but seating tire beads.
5. Changing parts or making modifications to the Viper™ voids the warranty and TSI will not be held liable.
6. VP 18 AL tanks are ASME
7. All series are US Patent 10,295,301, TAIWAN Patent M537535, China Patent 6186781.
8. Europe Patent Pending



Primary Features:



*Follow these instructions for proper bead seating methods and practices.
** Please note we recommend the use of a good quality inline filter to remove contaminants and moisture.

Operating Instruction

1. **IMPORTANT:** Prepare each wheel. Clean rims. Dirty rim flanges and poor tire beads can create flying debris from the rush of air going into the wheel.
2. TSI suggests using a quick-disconnect fitting (not included) on the air line to attach the air line to the valve stem. We sell an optional whip hose part #01.109.
3. Remove valve stem core from wheel. Set aside to replace after bead is seated.
4. Lubricate tire beads and rim flanges with approved tire lubricant.

5. Before placing wheel on tire stand, connect whip hose to valve stem (Fig. 2). You may have to thread the air line or part of the whip hose through the rim center if the valve stem is facing the ground when on the tire stand. In most cases, the wide flange of the wheel should be facing up and connect air line to whip hose.

6. As shown in Fig. 2, positioning a wheel on the tire stand will elevate both the tire and rim. The lower tire bead must be resting on the wheel bead-seat area. This alignment is very important to ensure the air blast is captured within the tire cavity.

7. Now you can attempt to seat the tire bead onto the rim.

8. **NOTE:** It's not always necessary to fill the tank to maximum pressure (145 PSI). The required pressure will vary depending on size and type of tire. It is best to begin with lower pressure and work up to optimum pressure for your specific tire.

9. Gather your footing. Open the whip hose to let air flow in through the valve stem. Firmly grasp the Viper™ tank with one hand on the forward handle and one on the rear. Aim the nozzle at a 35° - 45° angle (See Fig. 3) without touching the tire and clearing the rim. Press the trigger to discharge the tank.

10. Once the bead fully moves into position close the whip hose valve. Remove the whip hose locking chuck from the valve stem and replace valve stem core. With experience you will recognize filling the tank to capacity isn't necessary. The amount of air to seat the bead depends on the tire. Most tires can be seated between 80 PSI -100 PSI. Several attempts to seat the bead may be necessary.

11. Make sure the valve stem core is firmly tightened in place. You are now ready to proceed to inflate the tire.



Figure 2



Figure 3

Maintenance

1. Use genuine TSI replacement parts. Use of non-TSI parts will void warranty. Under no circumstances should items be welded or attached to the tank. Use only stock parts as referenced in the parts list.
2. TSI warranty does not cover a dropped tank or damage resulting from dropping the unit. Any tank that has been dropped or shows sign of damage should be immediately removed from service.
3. DAILY: inspect the pressure gauge and Safety Release Valve. Visually inspect the exterior of the tank for cracks or deterioration.
4. MONTHLY: Pull the ring of the safety release valve to ensure the valve moves freely.
5. MONTHLY: Remove the barrel and lube inside of tank with Air Tool Oil as well as the push button release valve to insure proper working condition.
6. Discontinue use of tanks should any of the maintenance items need service. Contact your distributor or TSI for replacement parts or new units.
7. We recommend replacement after five years in service. This is based on safety related input from the tank manufacturer. Following the maintenance protocol above and good judgment of the user should be the final determination of the unit's safety and need for replacement. Under NO circumstances should a tank with signs of deterioration, damage or malfunctioning safety valves or gauge be used because of the possibility of injury.

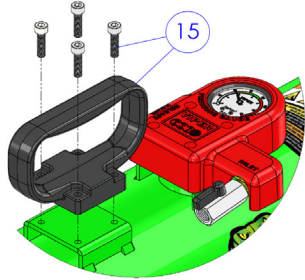
Repair Parts List

Call-Out #	Part #	Description
1	VP 2.0 CYL KIT	2" Viper Pressure Valve Kit for VP18AL
2	03.107	2" Lock Ring
3	VP 3.103 JET	Viper 2.0" Jet Barrel for VP18AL
4	05.102-145	Viper 145 PSI Pressure Relief Valve
5	16001	Pressure Gauge, 175psi
6	04.103	Ball Valve, Silver/Black
7	VP TRIGGER	Trigger Assembly for Viper
8	16006	Button, Safety Cap
9	VP PB Safety	Release Button Joint
10		Viper Release Pipe
11	12607	Rubber Feet For Bead Seater
12	16000	Parts Joint
13	16002	Elbow
14	16004	Parts Box
15	16005	Handle, Jet Pack
	Optional Products	(Not included with Viper)
	01.109	Tire Hose Assembly
	11586-OP	Locking Chuck (included in above)
	01.111	Universal Tire Stand

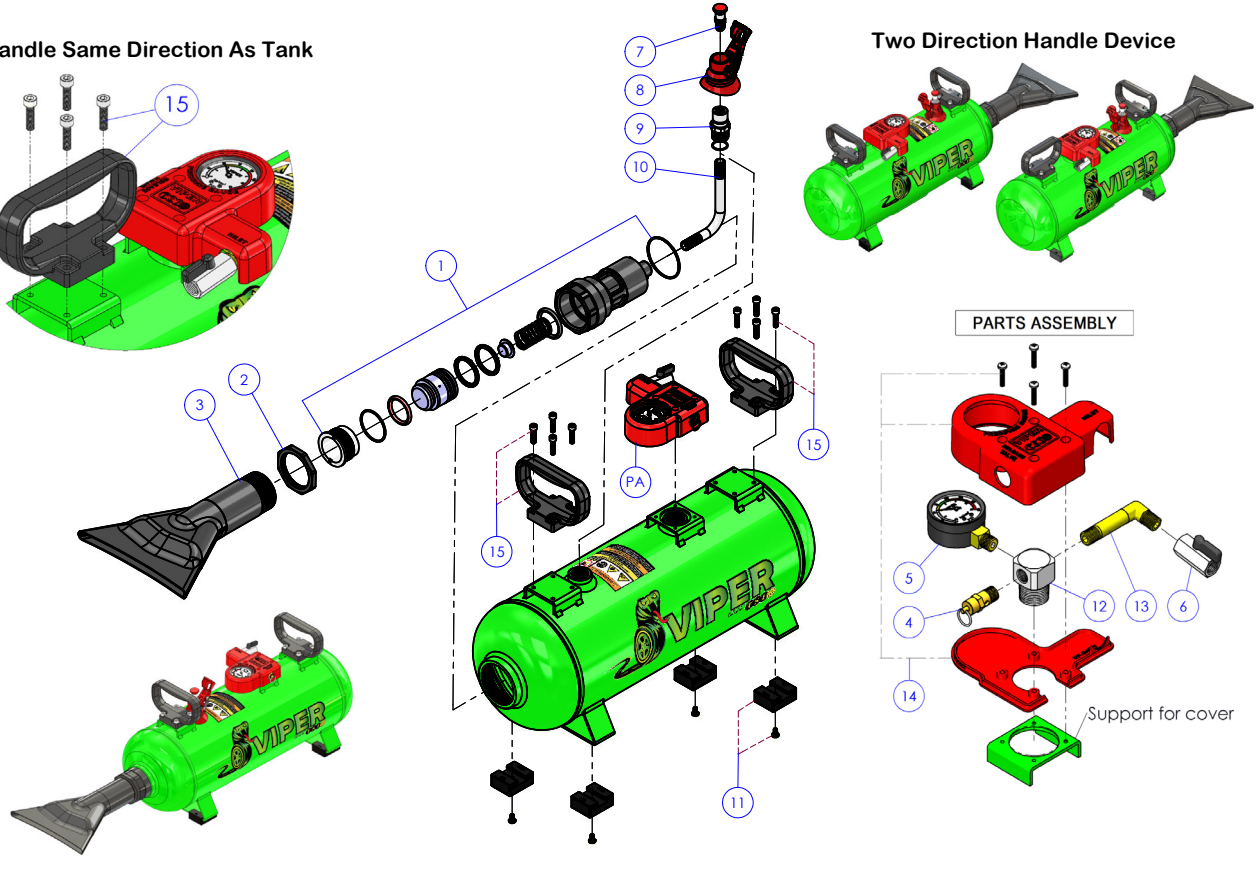
Repair Parts List

VP-18AL GEN 3.0 Main Assembly

Handle Same Direction As Tank



Two Direction Handle Device



born VP18AL G3.0 20210623

Warranty and Return Policy

Warranty & Workmanship you can depend on.

With over 30 years of manufacturing experience we maintain the ability to provide competitive prices while employing and manufacturing the majority of our products in the USA. Pride in our workmanship and standing behind each and every product is not just our claim but our uncompromising responsibility.

Tire Service International equipment is warranted to be free from defects in materials and workmanship for a period of one year from the date of original purchase to the original owner. Repair labor is warranted for 90 days from the date of original purchase. Bushings, blades, bearings and normal wear and tear are not covered under warranty. Careless handling, negligence, misuse, abuse, mutilation, improper operation, making unauthorized repairs, additions, and or alterations automatically cancel this warranty and relieves TSI of any obligation. Viper tanks claimed to be defective while under warranty will be evaluated at our manufacturing plant and either repaired if possible or exchanged and returned or credit issued to the customer account at our discretion. Damage resulting from dropping the tanks will not receive warranty consideration. Warranty parts need to be returned prepaid to the plant for credit. Any replacement parts shipped from the plant will be shipped at the customer's expense. Machines requiring warranty work must be brought to the manufacturing plant in 201 Chelsea Rd, Monticello, MN or to a repair facility authorized by TSI. **!!WARNING!!** Goods returned without an RGA will be refused. A Returned Goods Authorization form must be obtained before returning any material or goods. All non-warranty returns will be subject to a 15% restocking fee plus any additional charges for reconditioning/repacking.

Visit www.buyTSI.com for any additional information. Also be sure to follow us on all the Socials, and subscribe to our YouTube channel for all our product videos.

Copyright © 2021 Tire Service International, LLC

No part of this manual may be reproduced
without specific approval from Tire Service
International, LLC.