



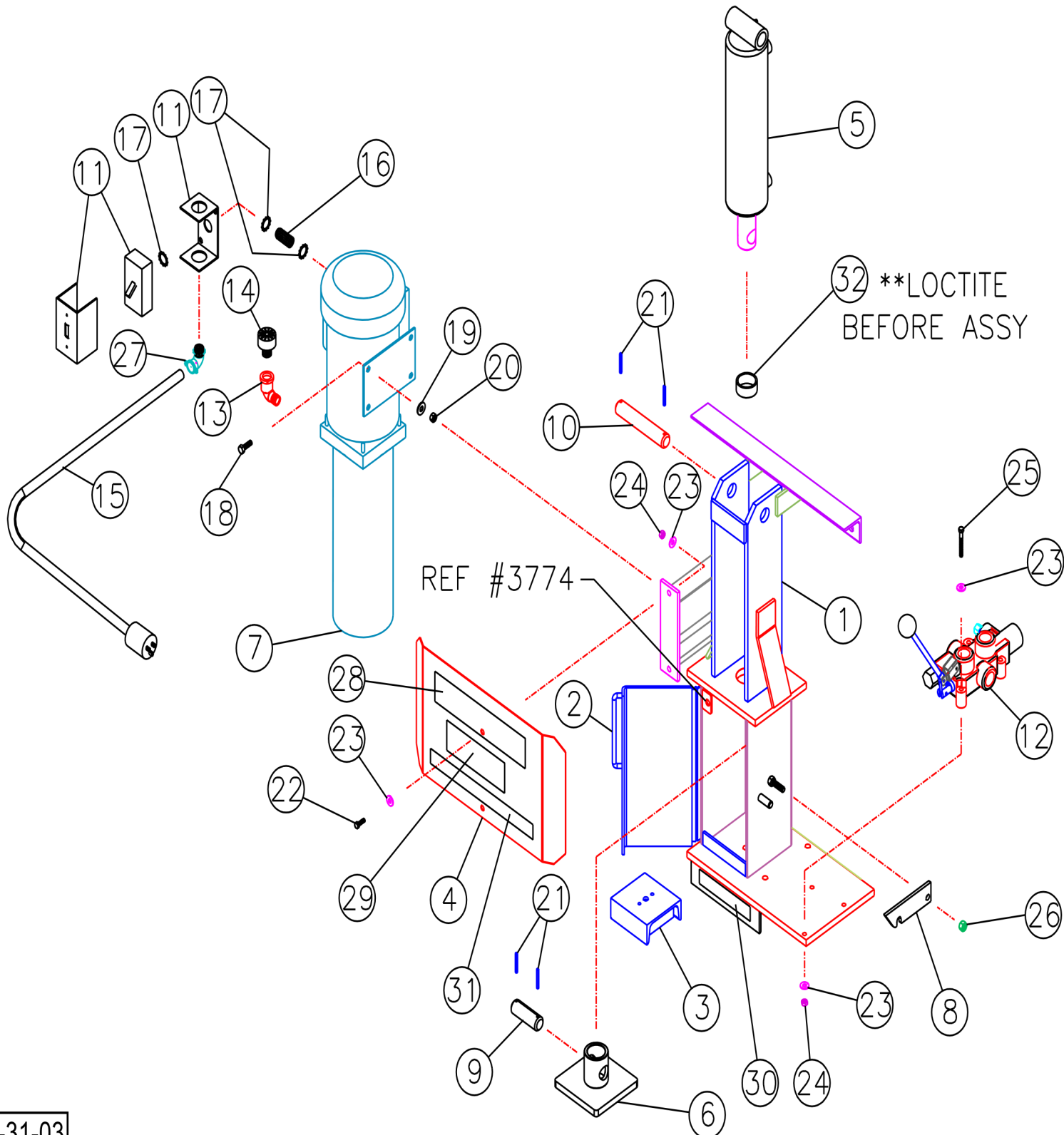
OIL FILTER CRUSHER

TC-6

MAIN ASSEMBLY

TIRE SERVICE INTERNATIONAL

PHOENIX, AZ · MONTICELLO, MN 1-800-223-4540





OIL FILTER CRUSHER
TC-6
MAIN ASSEMBLY

TIRE SERVICE INTERNATIONAL

PHOENIX, AZ • MONTICELLO, MN 1-800-223-4540

PARTS LIST

| ITEM | PART NO. | DESCRIPTION | QTY |
|------|----------|---|-----|
| 1 | 5590 | MAIN FRAME ASSY | 1 |
| 2 | 5730 | DOOR WELD | 1 |
| 3 | 5688 | RISER WELD | 1 |
| 4 | 4046 | SHEILD | 1 |
| 5 | 3639 | CYL. HYDRAULIC 3" DIA. BORE X 8" STROKE | 1 |
| 6 | 5544 | PRESS PLATE WELD | 1 |
| 7 | 4000 | POWER UNIT | 1 |
| 8 | 3771 | LATCH, ARM | 1 |
| 9 | 3736 | PIN, CYLINDER (LOWER) | 1 |
| 10 | 3735 | PIN, CYLINDER (UPPER) | 1 |
| 11 | 3483 | SWITCH, SWITCH BOX & COVER | 1 |
| 12 | 3020 | VALVE, HYDRAULIC | 1 |
| 13 | 808 | ELBOW, STREET 3/8NPT X 45° | 1 |
| 14 | 4000-10 | BREATHER | 1 |
| 15 | 704 | CORD SET, ELECTRIC, 3 COND. 12 AWG W/PLUG | 1 |
| 16 | 949 | 1-1/2NPT CLOSE NIPPLE | 1 |
| 17 | 701 | LOCK NUT, REGAL CONDUIT 1/2" | 3 |
| 18 | 3405 | CAP SCREW H H 5/16-18 X 1 | 4 |
| 19 | 1318 | WASHER, FLAT 5/16 | 8 |
| 20 | 566 | NUT, LOCK 5/16 | 4 |
| 21 | 202 | PIN, SPRING 3/16 DIA. X 1-1/2 LG. | 4 |
| 22 | 903 | CAP SCREW H H 1/4-20 X 3/4 GR2 | 2 |
| 23 | 445 | WASHER, FLAT 1/4 | 7 |
| 24 | 226 | NUT, LOCK 1/4-20 | 5 |
| 25 | 225 | CAP SCREW H H 1/4-20 X 2 | 3 |
| 26 | 212 | NUT, LOCK 3/8-16 | 1 |
| 27 | 806 | CONNECTOR, ELECTRICAL 90° | 1 |
| 28 | 4213 | DECAL - MODEL NAME | 1 |
| 29 | 3031 | DECAL - DANGER -WARNING | 1 |
| 30 | 3698 | DECAL - WASTE OIL DRAIN | 1 |
| 31 | 3095 | DECAL - DANGER | 1 |
| 32 | 3629 | BUSHING, BRASS 1-1/2 I.D. FLANGE | 1 |



TIRE SERVICE INTERNATIONAL

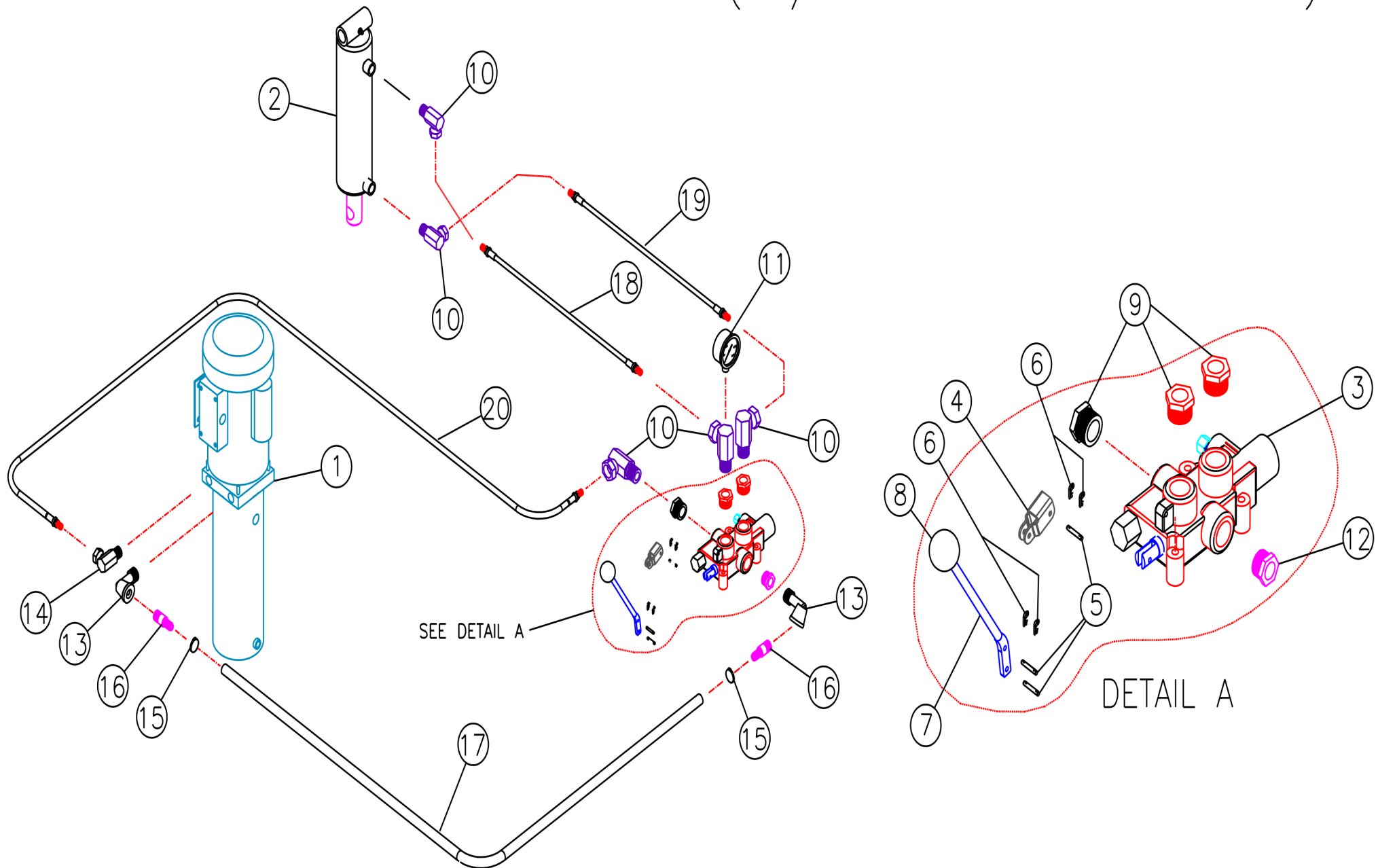
PHOENIX, AZ • MONTICELLO, MN 1-800-223-4540

OIL FILTER CRUSHER

TC-6

HYDRAULIC PARTS LIST

(W/O DOOR SWITCH)





TIRE SERVICE INTERNATIONAL

PHOENIX, AZ · MONTICELLO, MN 1-800-223-4540

OIL FILTER CRUSHER

TC-6

HYDRAULIC PARTS LIST

(W/O DOOR SWITCH)

PARTS LIST

| ITEM | PART NO. | DESCRIPTION | QTY |
|------|----------|--|-----|
| 1 | 4000 | POWER UNIT | 1 |
| 2 | 3639 | CYL, HYDRAULIC 3" DIA. BORE X 8" STROKE | 1 |
| 3 | 3020-1 | VALVE, HYDRAULIC | 1 |
| 4 | 3020-2 | LINK, VALVE HANDLE | 1 |
| 5 | 3020-3 | PIN, CLEVIS | 3 |
| 6 | 3020-4 | COTTER PIN | 4 |
| 7 | 3020-5 | HANDLE, VALVE | 1 |
| 8 | 3020-6 | KNOB, HANDLE | 1 |
| 9 | 125 | BUSHING, REDUCER 3/4 X 1/2NPT | 3 |
| 10 | 3670 | SWIVEL ADAPTER 1/2NPT X 3/8 (F) 90° | 5 |
| 11 | 3019 | GAUGE, PRESSURE | 1 |
| 12 | 714 | BUSHING, REDUCER 3/4 X 3/8NPT | 1 |
| 13 | 713 | ELBOW, STREET 3/8NPT X 90° | 2 |
| 14 | 3999 | ELBOW, HYDRAULIC 1/4NPT (M) X 3/8NPT (F) X 90° | 1 |
| 15 | 3088 | HOSE CLAMP | 2 |
| 16 | 4208 | HOSE FITTING - BARBED | 2 |
| 17 | 4043 | HOSE, POLY BRAID 1/2 I.D. X 30" LG. | 1 |
| 18 | 4041 | HOSE, HYDRAULIC 3/8 100R2 X 24" LG. | 1 |
| 19 | 4040 | HOSE, HYDRAULIC 3/8 100R2 X 16" LG. | 1 |
| 20 | 4042 | HOSE, HYDRAULIC 3/8NPT X 100R2 X 30"LG. | 1 |



TIRE SERVICE INTERNATIONAL

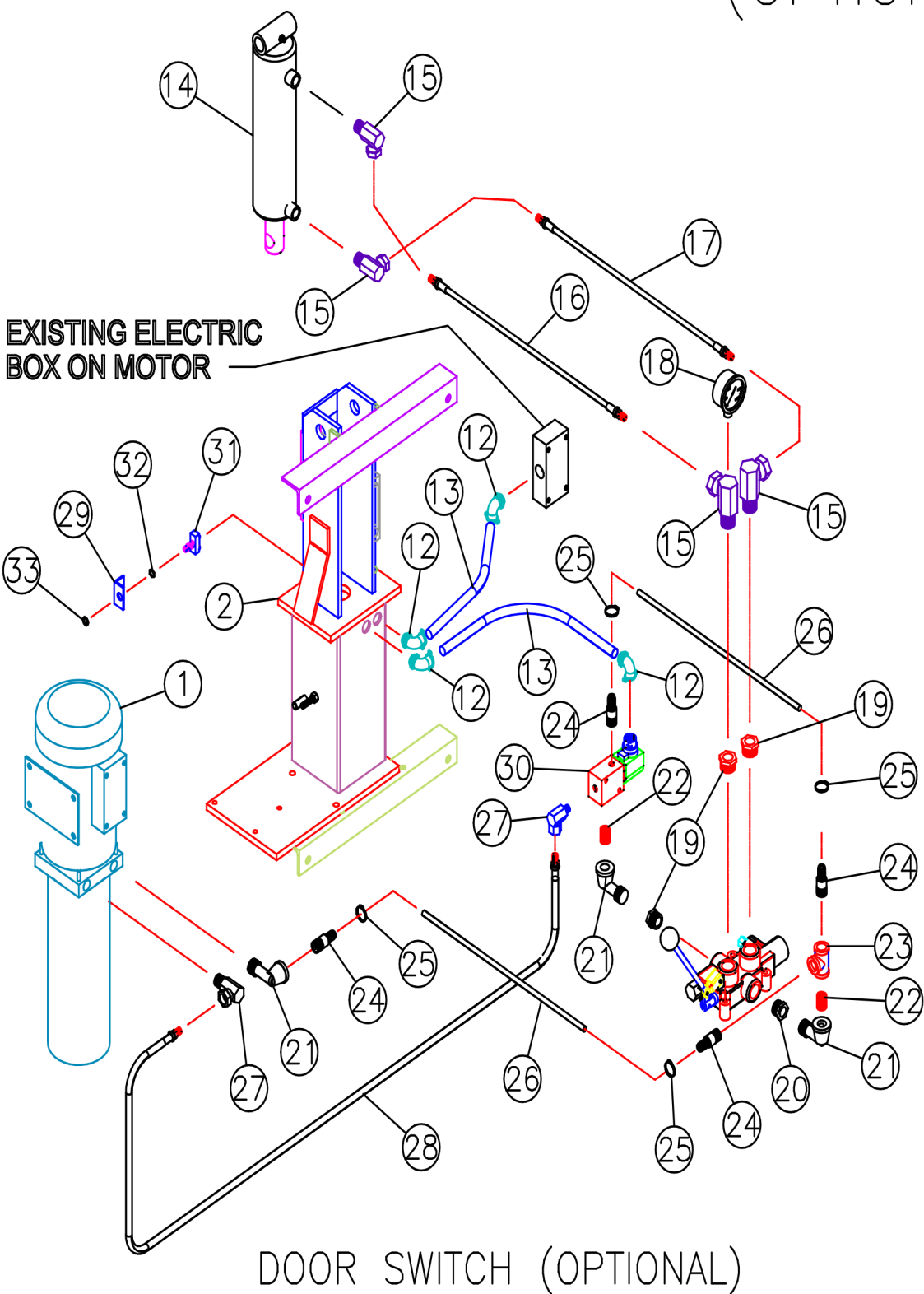
PHOENIX, AZ • MONTICELLO, MN 1-800-223-4540

OIL FILTER CRUSHER

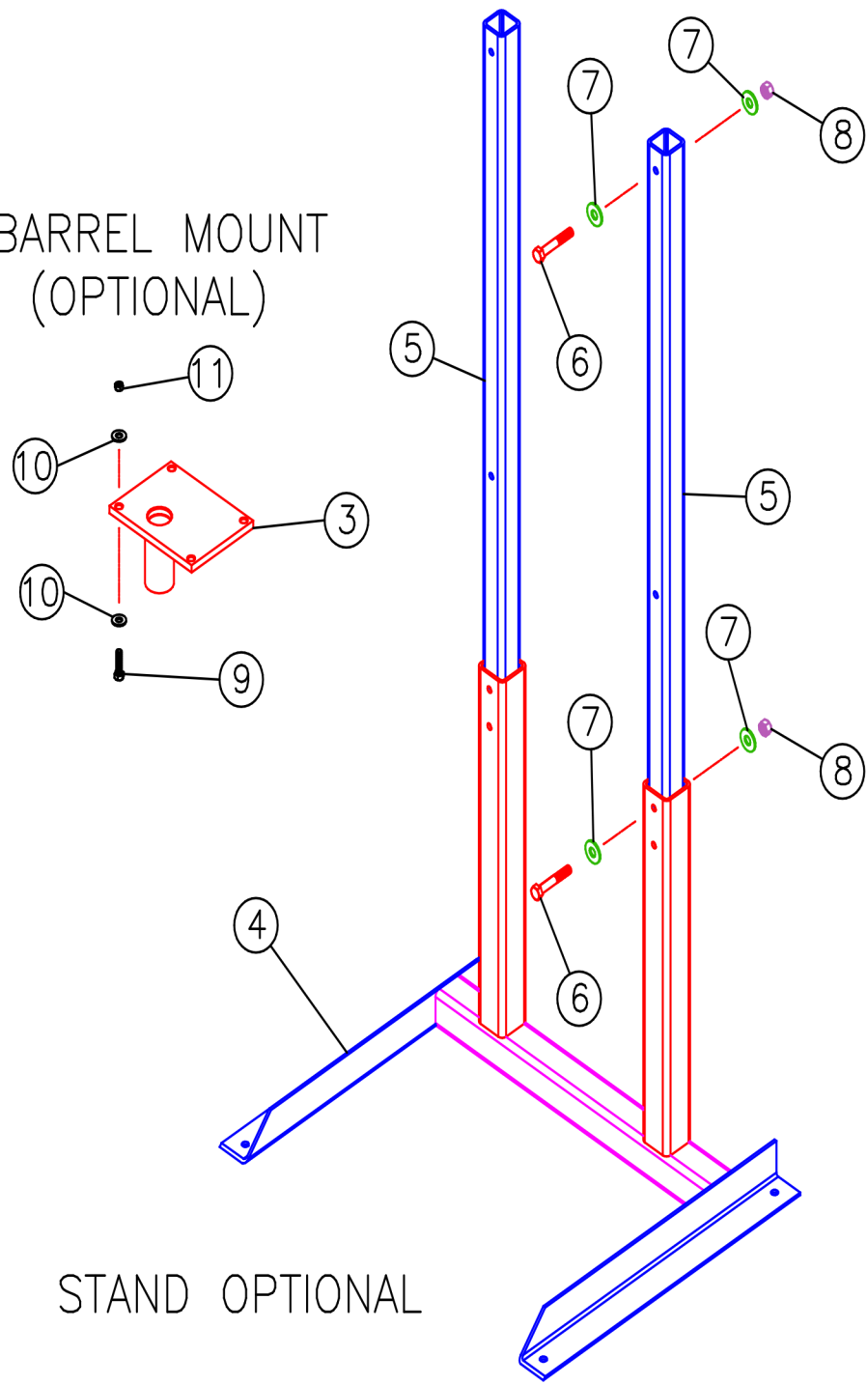
TC-6

(OPTIONAL) PARTS LIST

2-4-15



BARREL MOUNT (OPTIONAL)





TIRE SERVICE INTERNATIONAL

PHOENIX, AZ · MONTICELLO, MN 1-800-223-4540

OIL FILTER CRUSHER
TC-6
(OPTIONAL) PARTS LIST
2-4-15

PARTS LIST

| ITEM | PART NO. | DESCRIPTION | QTY |
|------|----------|---|-----|
| 1 | 4000 | POWER UNIT | 1 |
| 2 | 5590 | MAIN FRAME WELD | 1 |
| 3 | 5592 | TANK MOUNT WELD (OPTIONAL) | 1 |
| 4 | 5838 | STAND WELDMENT | 1 |
| 5 | 10173 | LEG, EXTENSION | 2 |
| 6 | 211 | CAP SCREW, H H 3/8 X 3 | 4 |
| 7 | 1318 | WASHER, FLAT | 8 |
| 8 | 212 | NUT, SELF-LOCK | 4 |
| 9 | 3500 | CAP SCREW, H H 3/8-16 X 1-1/2 | 4 |
| 10 | 700 | WASHER, FLAT 3/8 | 8 |
| 11 | 566 | NUT, LOCK 5/16 | 4 |
| 12 | 806 | CONNECTOR, ELECTRIC 90° | 4 |
| 13 | 3927 | FLEX CONDUIT | 2 |
| 14 | 3639 | CYL. HYD. 3" DIA. BORE X 8" STROKE | 1 |
| 15 | 3670 | SWIVEL ADAPTER 1/2NPT X 3/8 (F) 90° | 4 |
| 16 | 4041 | HOSE, HYD. 3/8 100R2 X 24" LG. | 1 |
| 17 | 4040 | HOSE, HYD 3/8 100R2 X 16" LG. | 1 |
| 18 | 3019 | GAUGE, PRESSURE | 1 |
| 19 | 125 | BUSHING, REDUCER 3/4NPT X 1/2NPT | 3 |
| 20 | 714 | BUSHING, REDUCER 3/4 X 3/8NPT | 1 |
| 21 | 713 | ELBOW, STREET 3/8NPT X 90° | 2 |
| 22 | 115 | NIPPLE, CLOSE 3/8 | 2 |
| 23 | 716 | TEE 3/8 | 1 |
| 24 | 4208 | HOSE FITTING - BARBED | 4 |
| 25 | 3088 | HOSE CLAMP | 4 |
| 26 | 4043 | HOSE, POLY BRAID 1/2 I.D. X 30" LG. | 2 |
| 27 | 3999 | ELBOW, HYD. 1/4NPT (M) X 3/8NPT (F) 90° | 1 |
| 28 | 4042 | HOSE, HYD. 3/8NPT X 100R2 X 30" LG. | 1 |
| 29 | 3774 | BRACKET, SWITCH | 1 |
| 30 | 3775 | SOLENOID, VALVE SWITCH | 1 |
| 31 | 10645-1 | SWITCH, PUSH BUTTON | 1 |
| 32 | 10645-2 | NUT, HEX | 1 |
| 33 | 10645-3 | NUT, KNURLED | 1 |