



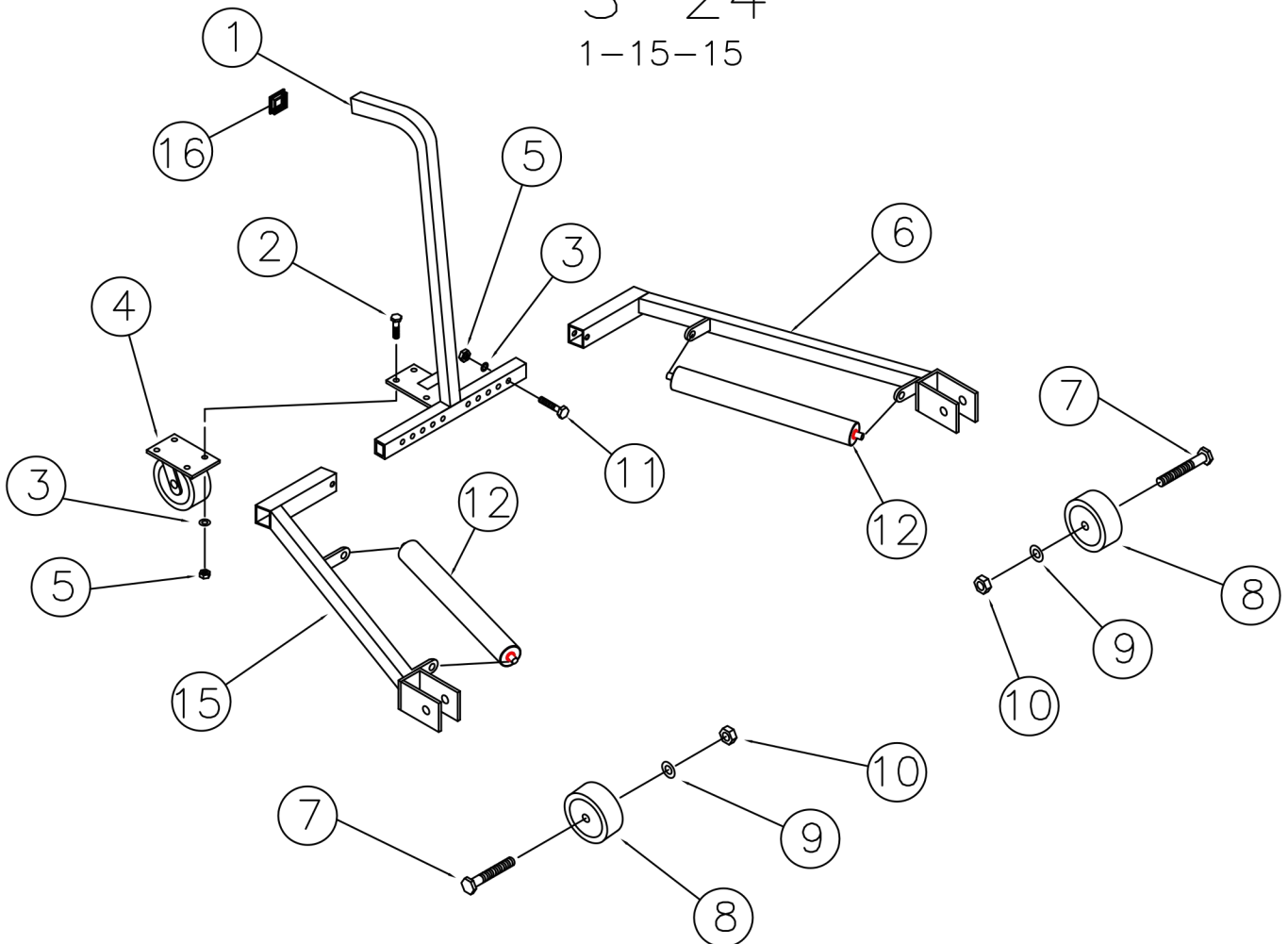
TIRE SERVICE INTERNATIONAL

PHOENIX, AZ • MONTICELLO, MN 1-800-223-4540

TIRE LIFT

S-24

1-15-15



| ITEM NO. | PART NO. | DESCRIPTION | QTY |
|----------|----------|----------------------------|-----|
| 1 | 10166A | HANDLE | 1 |
| 2 | 903 | CAP SCREW 1/4-20 | 4 |
| 3 | 445 | WASHER, FLAT 5/16 | 2 |
| 4 | 1520B | CASTER, SWIVEL | 1 |
| 5 | 226 | NUT, SELF LOCK 1/4-20 | 6 |
| 6 | 5833A | ADJUSTMENT ARM WELD (R.H.) | 1 |
| 7 | 986 | CAP SCREW 5/8-11 | 2 |
| 8 | 11008 | WHEEL 4" DIA. | 2 |

| ITEM NO. | PART NO. | DESCRIPTION | QTY |
|----------|----------|----------------------------|-----|
| 9 | 987 | WASHER, FLAT 5/8 | 2 |
| 10 | 4836 | NUT, SELF LOCK 5/8-11 | 2 |
| 11 | 3500 | CAP SCREW 3/8-16 | 2 |
| 12 | 12223 | ROLLER W/BEARINGS | |
| 13 | | | |
| 14 | | | 2 |
| 15 | 5833B | ADJUSTMENT ARM WELD (L.H.) | 1 |
| 16 | 4983 | END CAP - PLASTIC | 1 |