

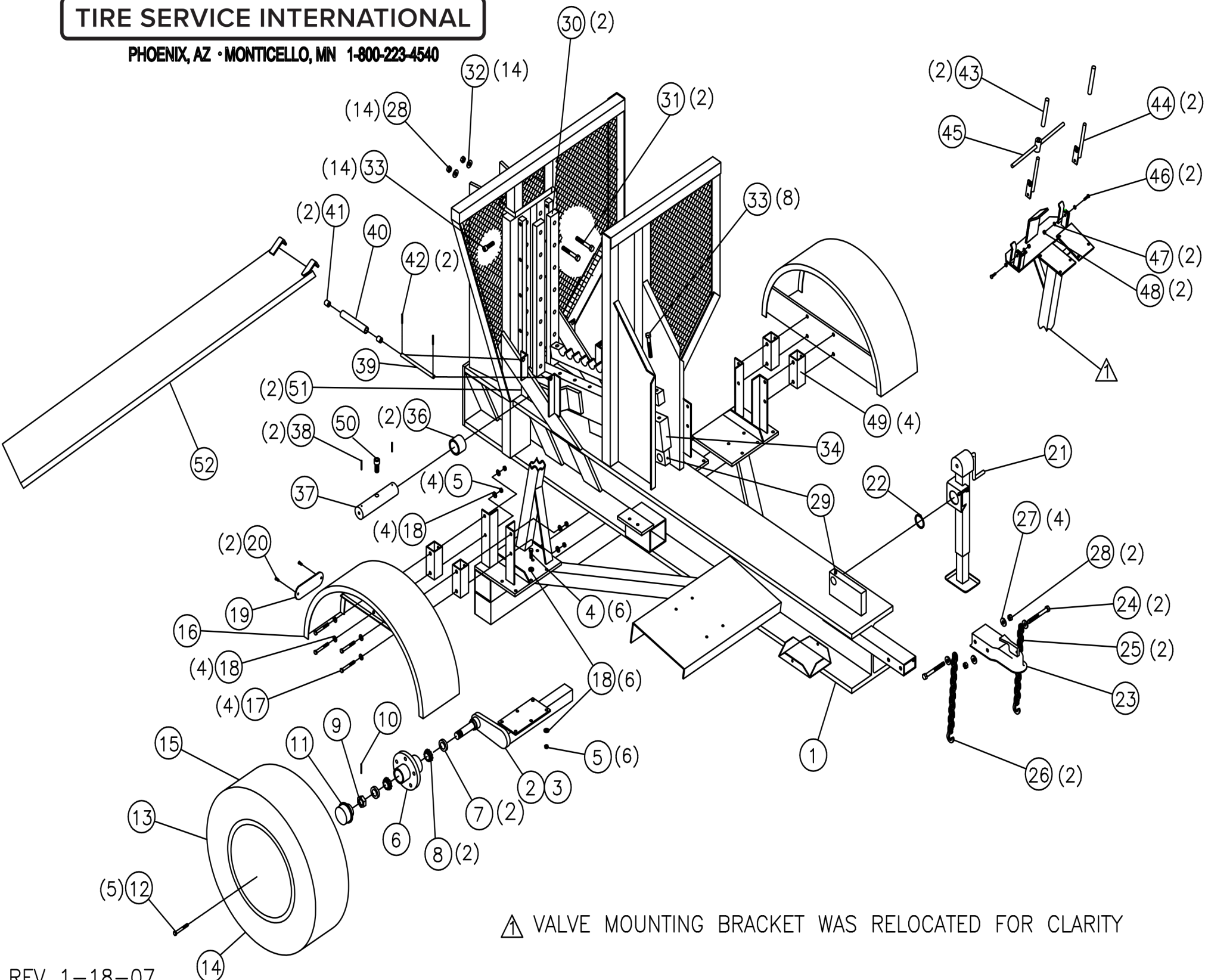


TC-100 MAIN ASSEMBLY

BEGINNING SERIAL NO.1251

TIRE SERVICE INTERNATIONAL

PHOENIX, AZ • MONTICELLO, MN 1-800-223-4540





TIRE SERVICE INTERNATIONAL

PHOENIX, AZ • MONTICELLO, MN 1-800-223-4540

TC-100
 MAIN ASSEMBLY
 BEGINNING SERIAL NO.1251

PARTS LIST

ITEM	PART NO.	DESCRIPTION	QTY
1	5518	MAIN FRAME WELD	1
2	3397	SPINDLE, AXLE R.H.	1
3	3398	SPINDLE, AXLE L.H.	1
4	447	CAP SCREW, HH 3/8-16 X 1-1/4	10
5	212	NUT, HEX LOCK 3/8-16	26
6	3025-1	WHEEL HUB	2
7	3025-2	SEAL, BEARING	4
8	3025-3	BEARING, TAPERED	4
9	3025-4	NUT, SPINDLE	2
10	3025-5	COTTER PIN	2
11	3025-6	COVER, HUB	2
12	3025-7	LUG BOLT	10
13	3034	WHEEL, WHITE SPOKED, 13"	2
14	3083	VALVE STEM	2
15	3084	TIRE, 185 X 13, 2 PLY BIAS WHT WALL	2
16	5519	FENDER WELD ASSY	2
17	1306	CAP SCREW, HH 3/8-16 X 1	8
18	700	WASHER, FLAT 3/8	8
19	3079	REFLECTOR	2
20	1055	SCREW, SELF TAP #10-24 X 1/2	4
21	3023-1	JACK	1
22	3023-2	RETAINING RING	1
23	3027	HITCH COUPLER, 2" BALL	1
24	3060	CAP SCREW, 1/2-13 X 4-1/2	2
25	3081	CHAIN, SAFETY	2
26	3082	CLIP, SAFETY CHAIN	2

PARTS LIST

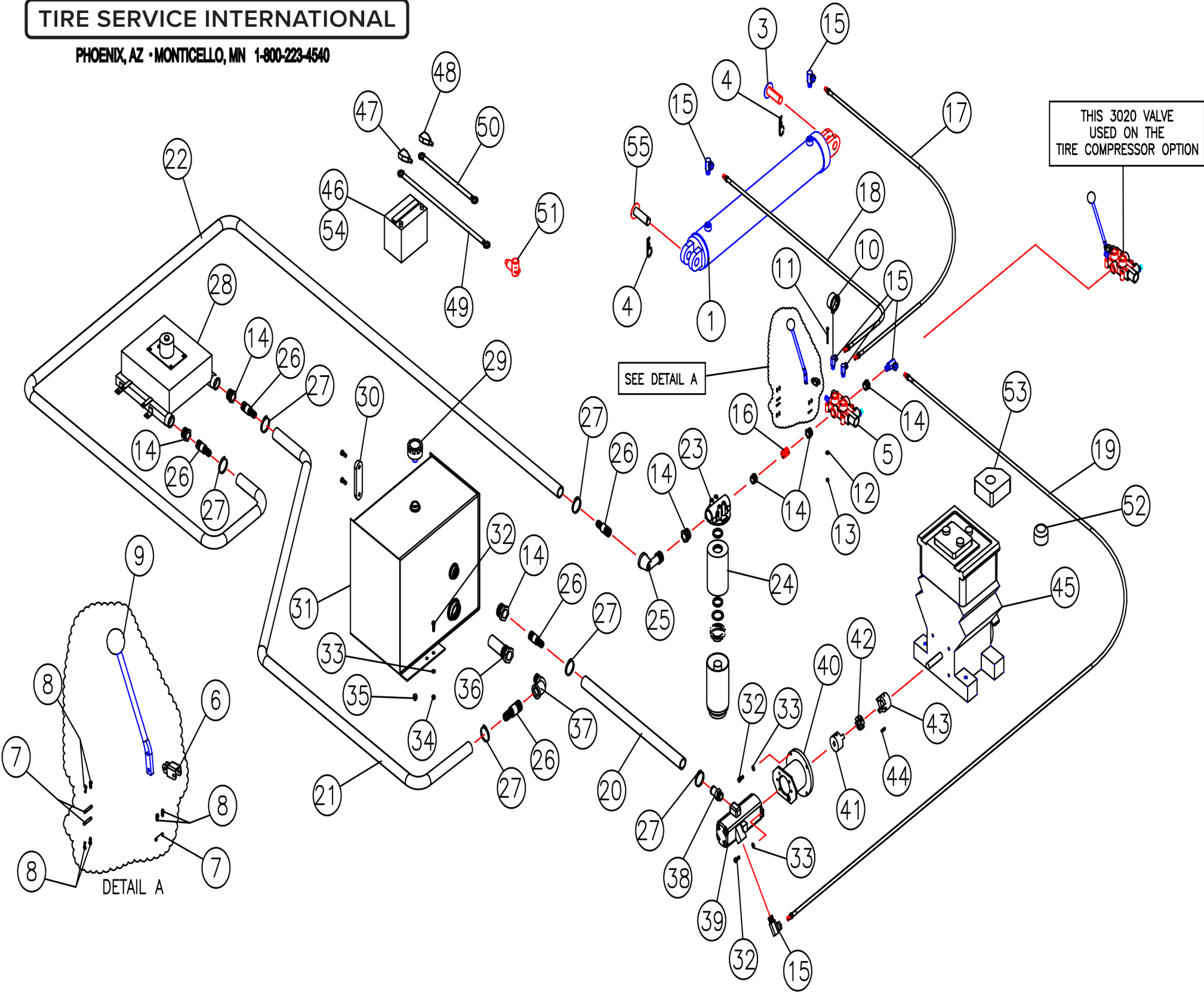
ITEM	PART NO.	DESCRIPTION	QTY
27	224W	WASHER, FLAT 1/2	2
28	223	NUT, HEX LOCK 1/2-13	16
29	210	GREASE ZERK	4
30	3029	FEMALE SHEAR BLADE	2
31	443	CAP SCREW, HH, 1/2-13 X 3-1/2	14
32	224	WASHER, FLAT 1/2	14
33	3042	CAP SCREW, AL SOC HD, 1/2-13 X 1-3/4	18
34	5520	SHEAR BAR SUPPORT WELD	1
35	3030	MALE SHEAR BAR	1
36	3196	BUSHING, FULCRUM	2
37	3072	PIN, FULCRUM	1
38	276	COTTER PIN, 3/16	2
39	3113	SHAFT, ROLLER	2
40	3112	ROLLER, TIRE SUPPORT	2
41	3102	BEARING ROLLER	4
42	1436	COTTER PIN	4
43	230	HANDLE GRIP	2
44	5534	HANDLE WELD	2
45	5535	PIVOT WELD	1
46	444	CAP SCREW, HH, 1/4-20 X 1	4
47	445	WASHER, FLAT 1/4	9
48	226	NUT, HEX LOCK 1/4-20	4
49	4217	SPACER, FENDER	4
50	4860	CAP SCREW, AL SOC HD 5/8-1 X 2	1
51	3065	ANCHOR, FULCRUM (PIVOT BLOCK)	2
52	5949	TIRE RAMP WELDMENT	1



TC-100 HYDRAULIC ASSY 9-21-15

TIRE SERVICE INTERNATIONAL

PHOENIX, AZ • MONTICELLO, MN 1-800-223-4540





TIRE SERVICE INTERNATIONAL

PHOENIX, AZ • MONTICELLO, MN 1-800-223-4540

TC-100
HYDRAULIC ASSY
9-21-15

PARTS LIST

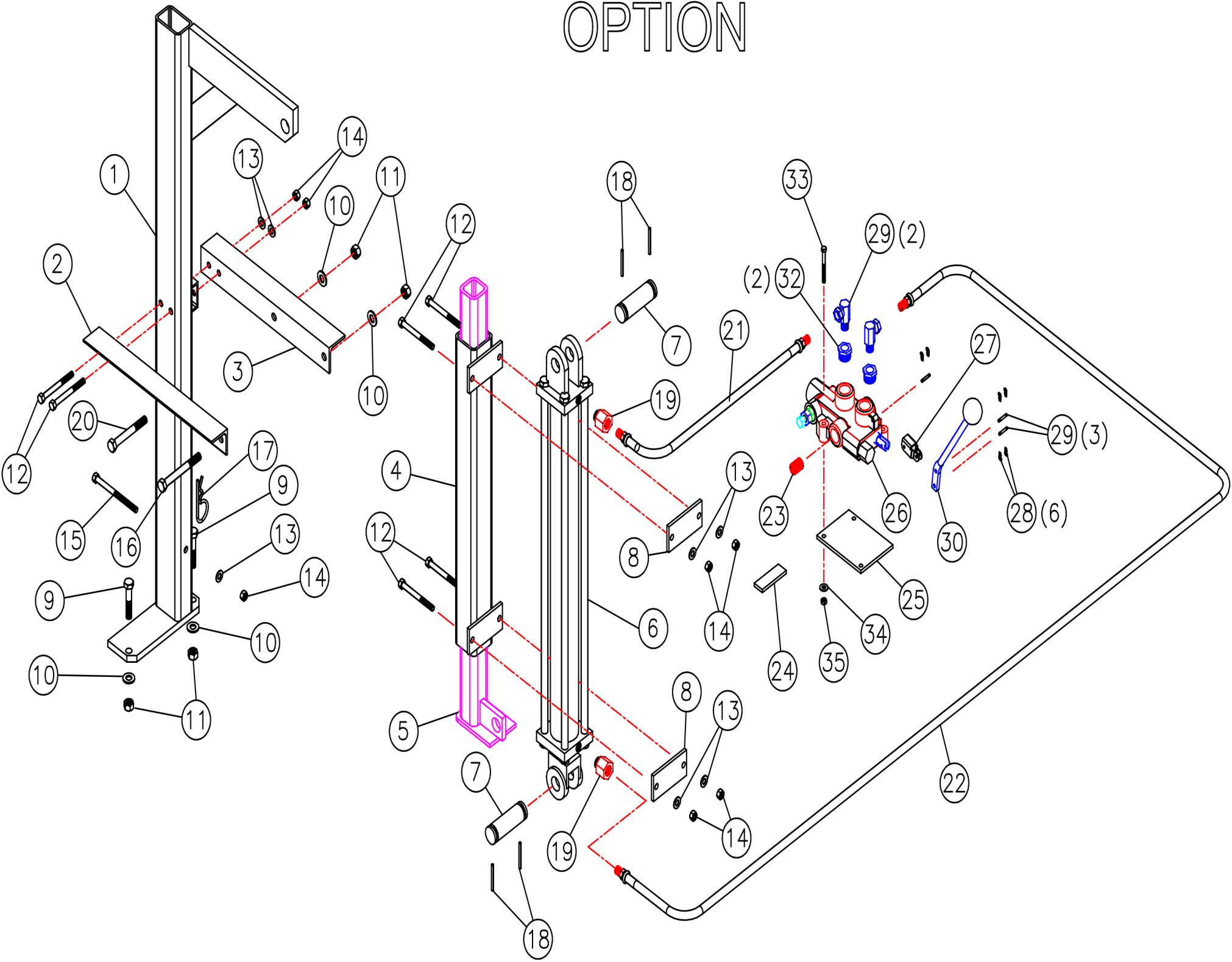
ITEM	PART NO.	DESCRIPTION	QTY	ITEM	PART NO.	DESCRIPTION	QTY
1	3022	CYLINDER, HYDRAULIC 5 X 30	1	30	10171	SIGHT GAUGE W/THERMOMETER	1
2	3022R	CYLINDER REPAIR KIT - PRINCE 5 X 30	1	31	5521D	HYDRAULIC OIL RESERVOIR	1
3	5656	CYLINDER PIN, FRONT	1	32	447	CAP SCREW H.H. 3/8-16 X 1-1/4	10
4	799	HAIRPIN, COTTER	2	33	700	WASHER, FLAT 3/8"	10
5	3020-1	VALVE, HYDRAULIC	1	34	212	NUT, HEX 3/8-16	4
6	3020-2	LINK, VALVE HANDLE	1	35	717	DRAIN PLUG 3/8"	1
7	3020-3	PIN, CLEVIS	3	36	3009	SUCTION STRAINER, 2NPT EXT. X 1-1/4NPT	1
8	3020-4	PIN, COTTER	3	37	3133	ELBOW, STREET 1"NPT X 90°	1
9	3020-5	HANDLE, VALVE	1	38	4675	O-RING FIT, BELL END 1-5/16-12 X 1-1/4	1
10	3019	PRESSURE GAUGE	1	39	4571	PUMP, HYDRAULIC 28 GPM	1
11	3085	CAP SCREW, H.H. 1/4-20 X 1-3/4	3	40	3513.50	MOTOR, PUMP ADAPTER 28 GPM	1
12	445	WASHER, FLAT 1/4	3	41	10067	JAW COUPLING 5/8"	1
13	226	NUT, HEX 1/4-20	3	42	4451	RUBBER INSERT - BLACK RUBBER	1
14	3138	REDUCER BUSHING 1-1/4NPT X 1NPT	6	43	10066	CYLINDER, HYDRAULIC 5 X 30	1
15	3131	ELBOW ADAPTER 3/4 X 3/4 X 90°	6	44	1492	KEY, SQUARE 1/4" SQ. X 1" LG.	1
16	3139	NIPPLE, CLOSE 1"NPT	1	45	4643	ENGINE, GAS BRIGGS & STRATTON 18HP	1
17	3400	HOSE, HYDRAULIC 60" LG.	1	46	3033	BATTERY 12 VOLT	1
18	3399	HOSE, HYDRAULIC 30" LG.	1	47	10408	BATTERY POST GUARD BLACK-NEG.	1
19	3402	HOSE, HYDRAULIC 50" LG.	1	48	10407	BATTERY POST GUARD RED-POS.	1
20	3148	HOSE, HYD. RETURN 1-1/4 I.D. X 40" LG.	1	49	3163	BATTERY CABLE 26" NEG.	1
21	3148	HOSE, HYD. RETURN 1-1/4 I.D. X 33" LG.	1	50	3162	BATTERY CABLE 16" POS.	1
22	3148	HOSE, HYD. 1-1/4 I.D. X 18" LG.	1	51	10664	RING BOOT, STARTE END	1
23	10130	FILTER (COMPLETE UNIT)	1	52	492932 (5049)	OIL FILTER (6 cm long)	1
24	10130E	FILTER ELEMENT (ELEMENT ONLY)	1	53	692519	AIR CLEANER CARTRIDGE (MODEL 380000)	1
25	3086	ELBOW, STREET 3/4NPT X 90°	1		692520	AIR CLEANER PRE-CLEANER (MODEL 380000)	1
26	3921	BARB HOSE FITTING 1-1/4NPT X 1-1/4 I.D.	5	54	3155	RUBBER STRAP 10"	1
27	3088	HOSE CLAMP - SIZE 24	6	**	3485-2.19	HYD. HOSE COVER - NYLON (NOT SHOWN)	1
28	10152	HYDRAULIC OIL COOLER	1	**	3020RK	VALVE PACKING KIT (3020 HYD. VALVE)	1
29	3147	BREATHER CAP 1"DIA.	1	55	3022-1	PIN, CYLINDER	1



TIRE SERVICE INTERNATIONAL

PHOENIX, AZ • MONTICELLO, MN 1-800-223-4540

TC-100 TIRE COMPRESSOR OPTION





TIRE SERVICE INTERNATIONAL

PHOENIX, AZ • MONTICELLO, MN 1-800-223-4540

TC-100 TIRE COMPRESSOR OPTION

PARTS LIST

ITEM	PART NO.	DESCRIPTION	QTY
1	5521	FRAME, TIRE COMPRESSOR	1
2	3111R	ANGLE GUIDE R.H.	1
3	3111L	ANGLE GUIDE L.H.	1
4	5523	OUTER TUBE WELD	1
5	5522	FOOT, TIRE SLIDING	1
6	3396-1	CYLINDER, HYDRAULIC 2.5 X 24	1
7	3396-2	PIN, CYLINDER	2
8	3127	BAR, CLAMP	2
9	770	CAP SCREW 1/2-13 X 2-1/2	2
10	224	WASHER, FLAT 1/2"	4
11	223	NUT, HEX 1/2-13	4
12	378	CAP SCREW 3/8-16 X 4	6
13	1354	LOCK WASHER 3/8"	7
14	398	NUT, HEX 3/8-16	7
15	3117	CAP SCREW 3/8-16 X 6	1
16	3080	CAP SCREW 1/2-13 X 4-1/2 (MOD)	1
17	799	HAIRPIN, COTTER	1
18	276	COTTER PIN 3/16 X 2	4
19	3844	ADAPTER, HOSE COUPLING	2
20	366	CAP SCREW 1/2-13 X 4	1
21	3145	HOSE, 1/2 I.D. X 84" LG.	1
22	3000	HOSE, 1/2 I.D. X 60" LG.	1
23	3135	NIPPLE, CLOSE 3/4NPT HI PRESSURE	1
24	10789	BAR LINK	1
25	3038	BRACKET, VALVE MOUNT	1
26	3020-1	HYDRAULIC VALVE	1
27	3020-2	VALVE, HANDLE LINK	1
28	3020-3	COTTER PIN	6
29	3020-4	CLEVIS PIN	3
30	3020-5	HANDLE	1
31	3131	SWIVEL, ELBOW 3/4NPT M X 3/4NPT F	2
32	125	REDUCER BUSHING 3/4 X 1/2NPT	2
33	639	CAP SCREW 1/4-20 X 2-1/2	3
34	1318	WASHER, FLAT 5/16"	3
35	226	NUT, SELF LOCK 1/4-20	3