

8 7 6 5 4 3 2 1

D

D

C

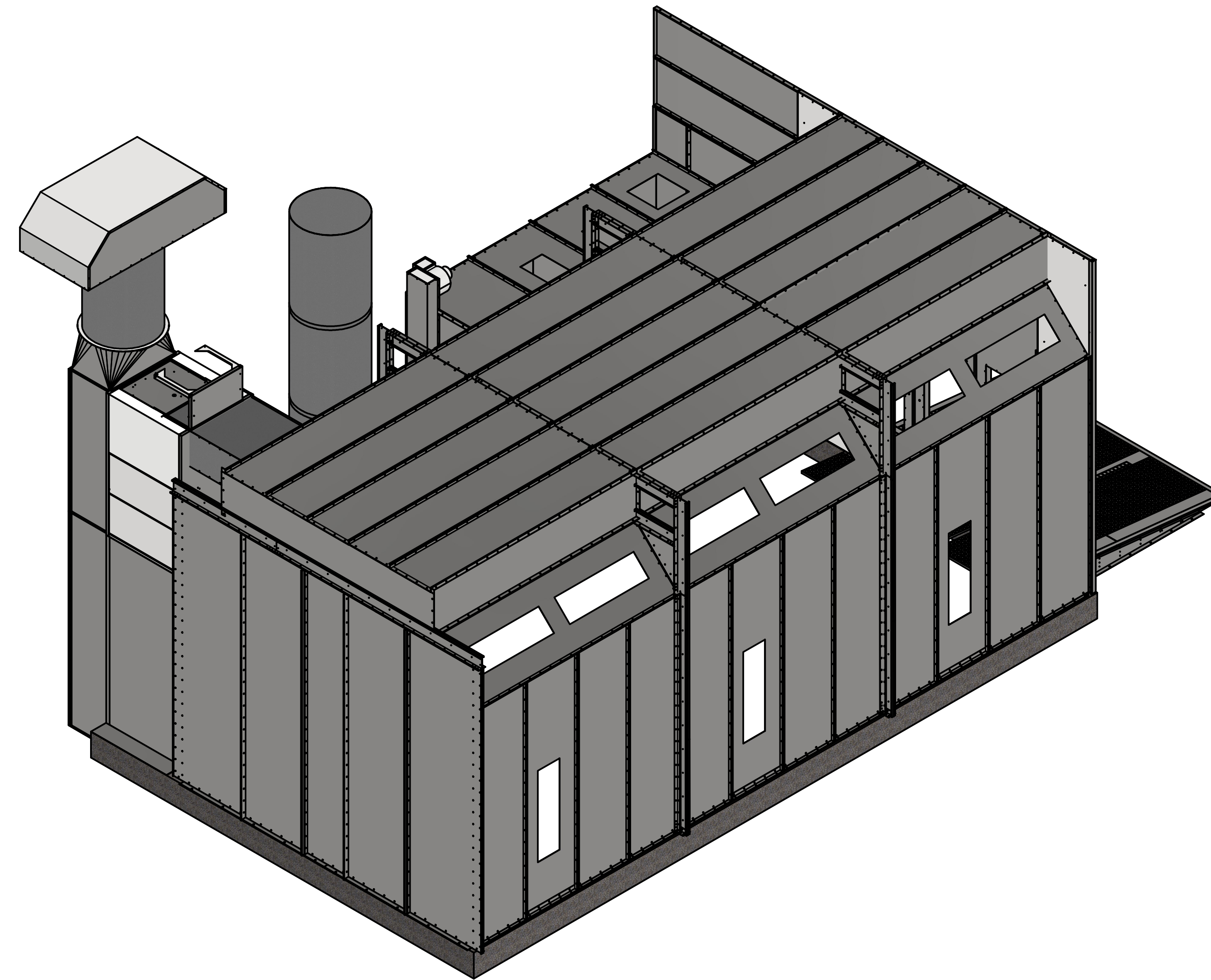
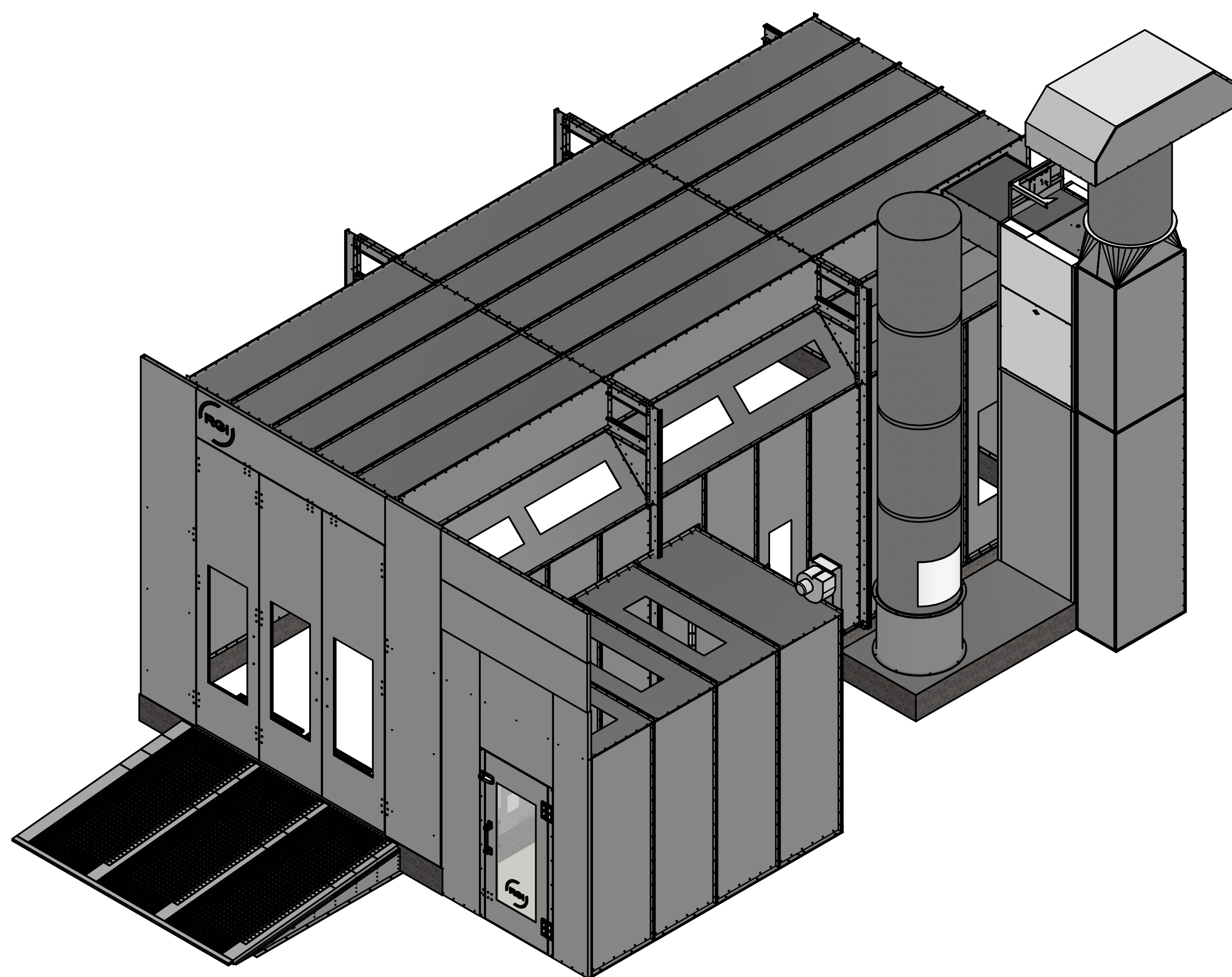
C

B

B

A

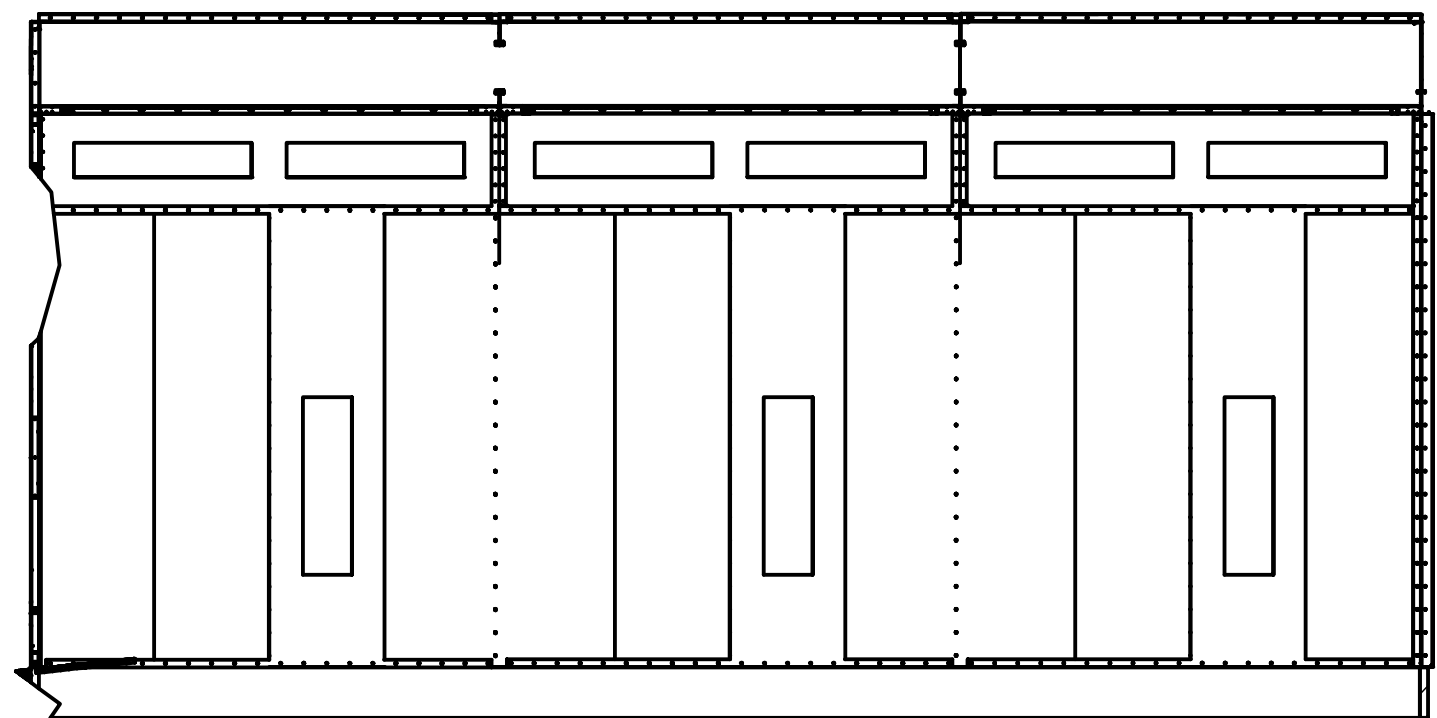
A



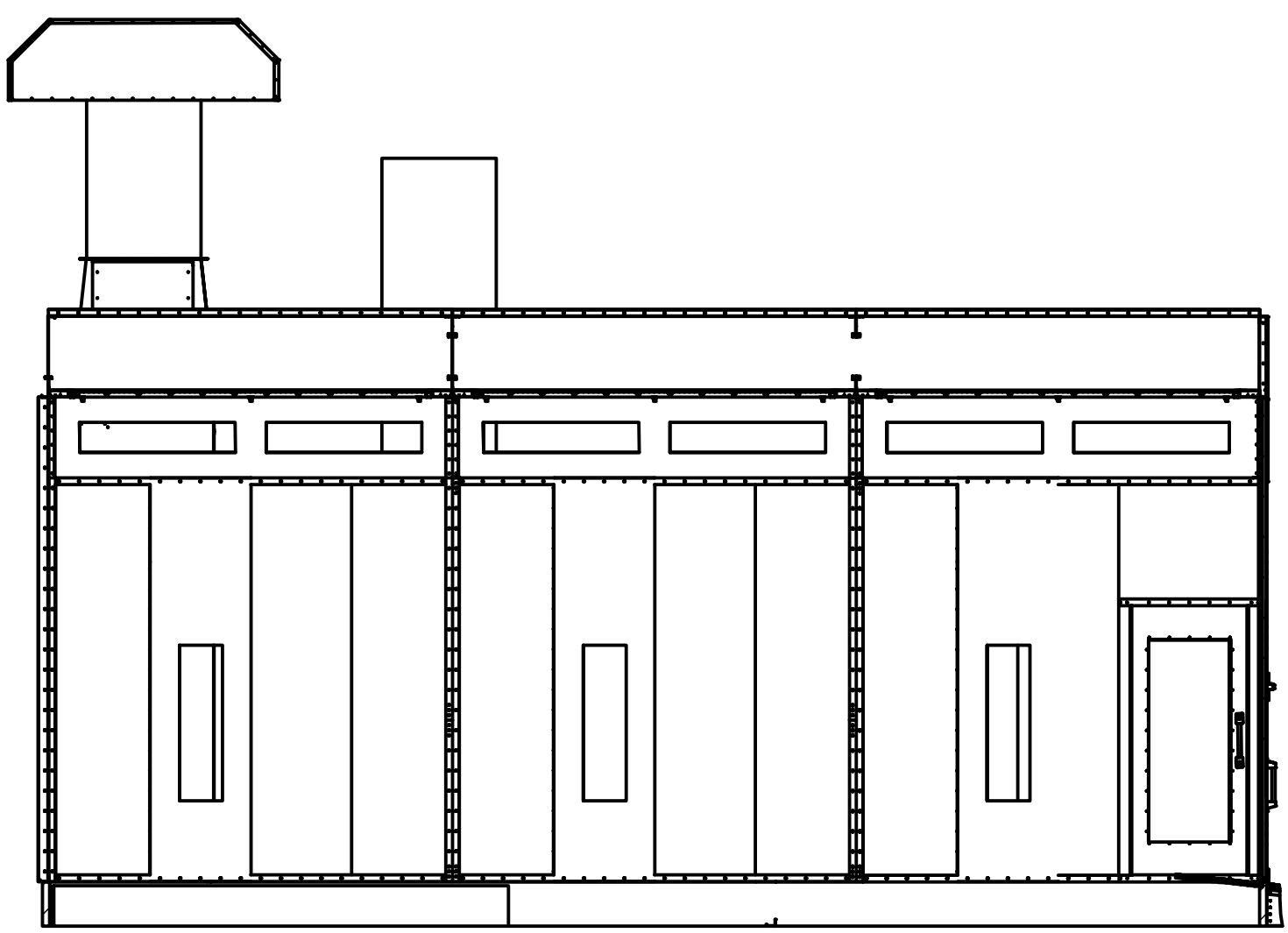
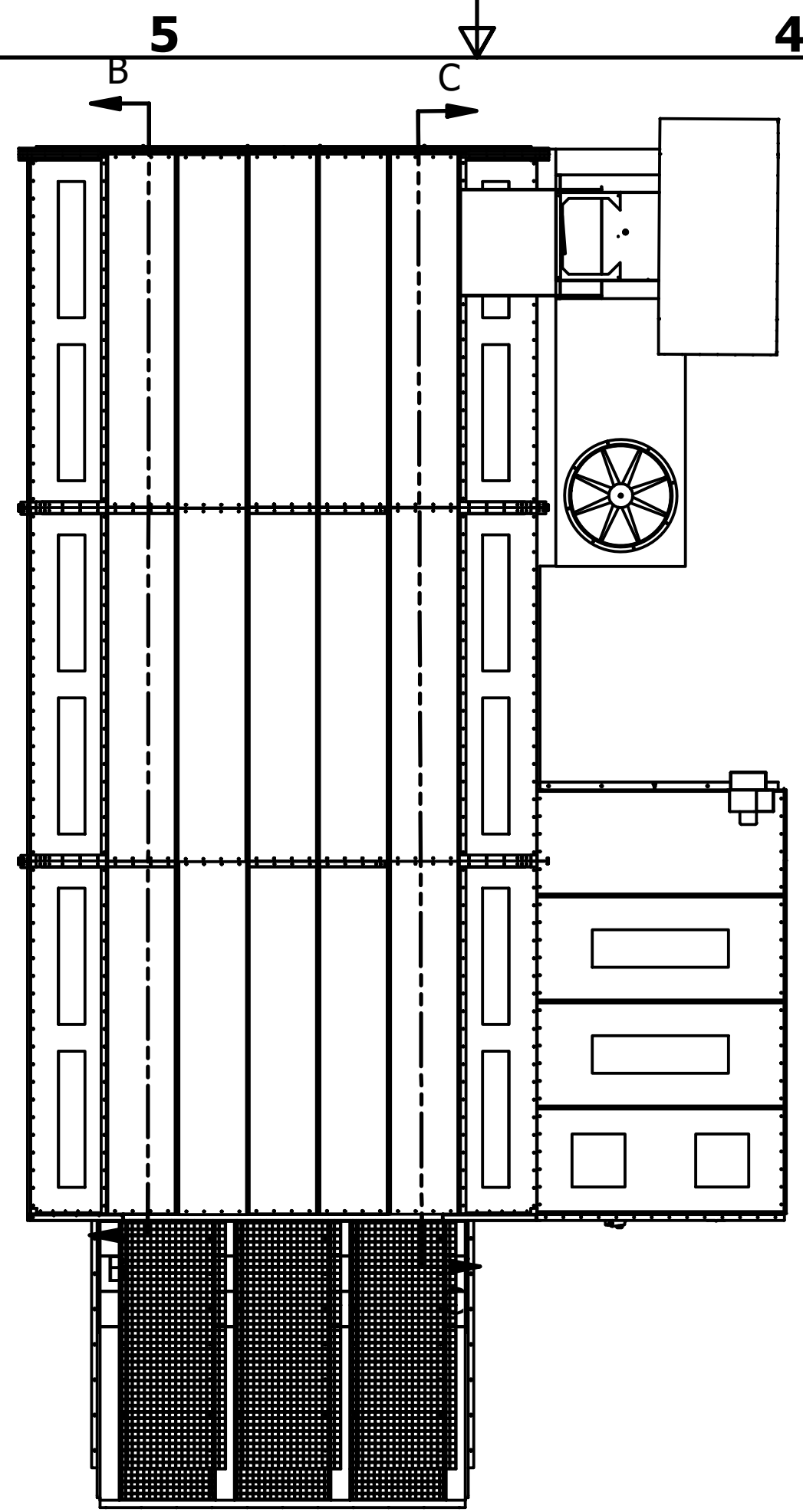
8 7 6 5 4 3 2 1

DRAWN Curtis K	4/27/2022	RGI SPRAY BOOTHS	
CHECKED		TITLE OMEGA STEALTH 30L X 14W X 12H VIEW	
QA		SIZE D	DWG NO
MFG		SCALE 1 / 35	LONGMONT CARGO STEALTH 30L X
APPROVED		SHEET 1	OF 8

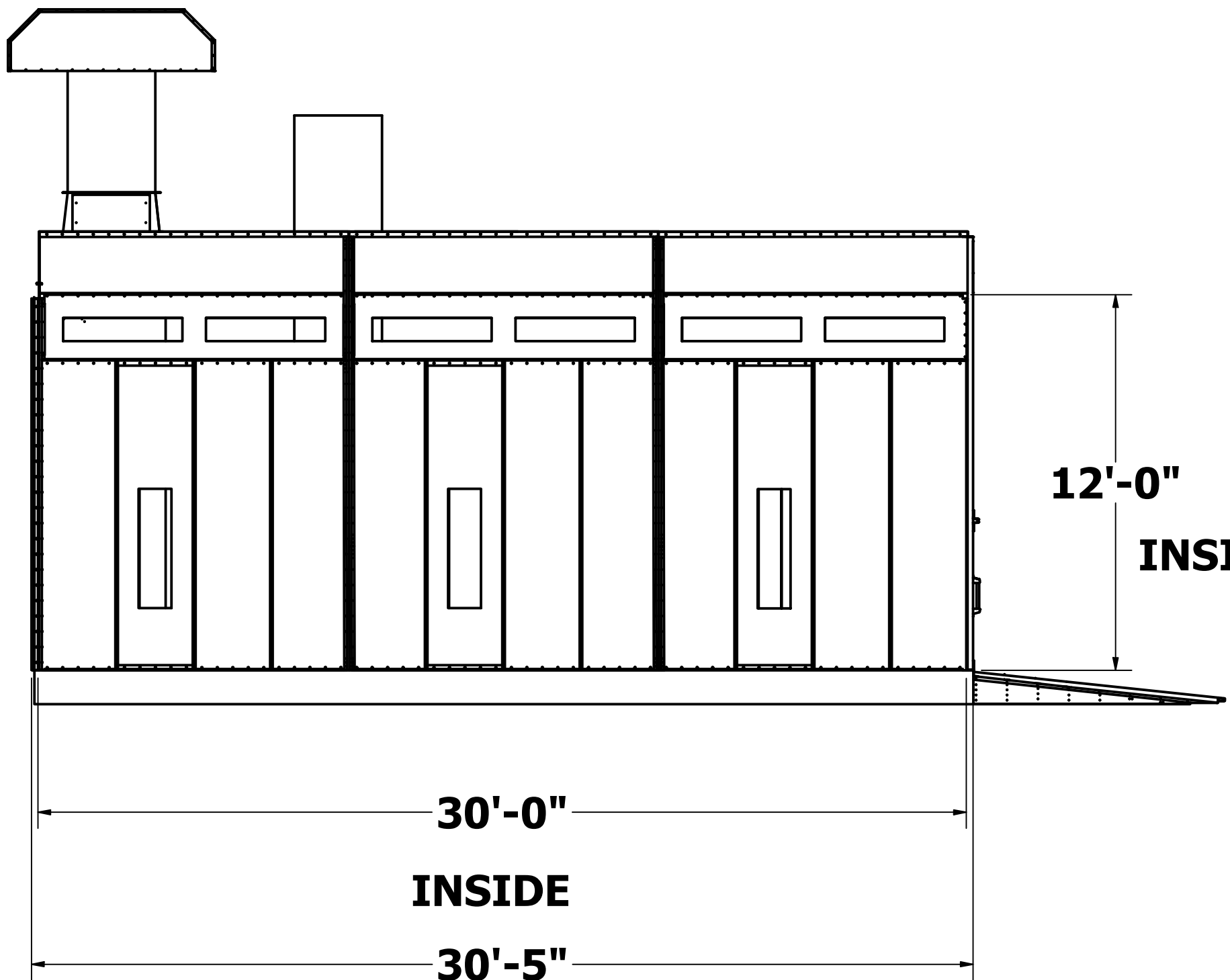
8 7 6 5 4 3 2 1



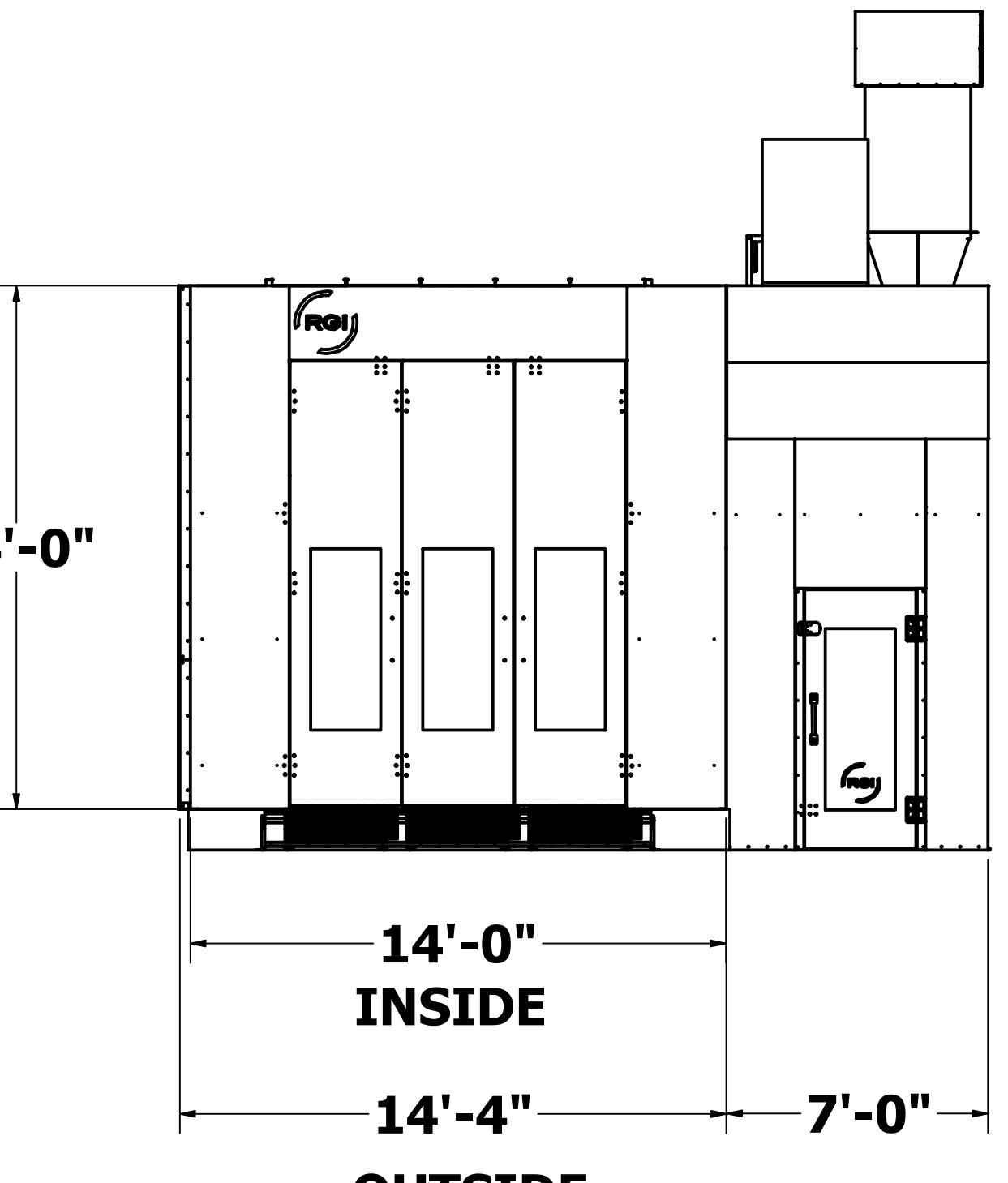
SECTION B-B
SCALE 1 / 50



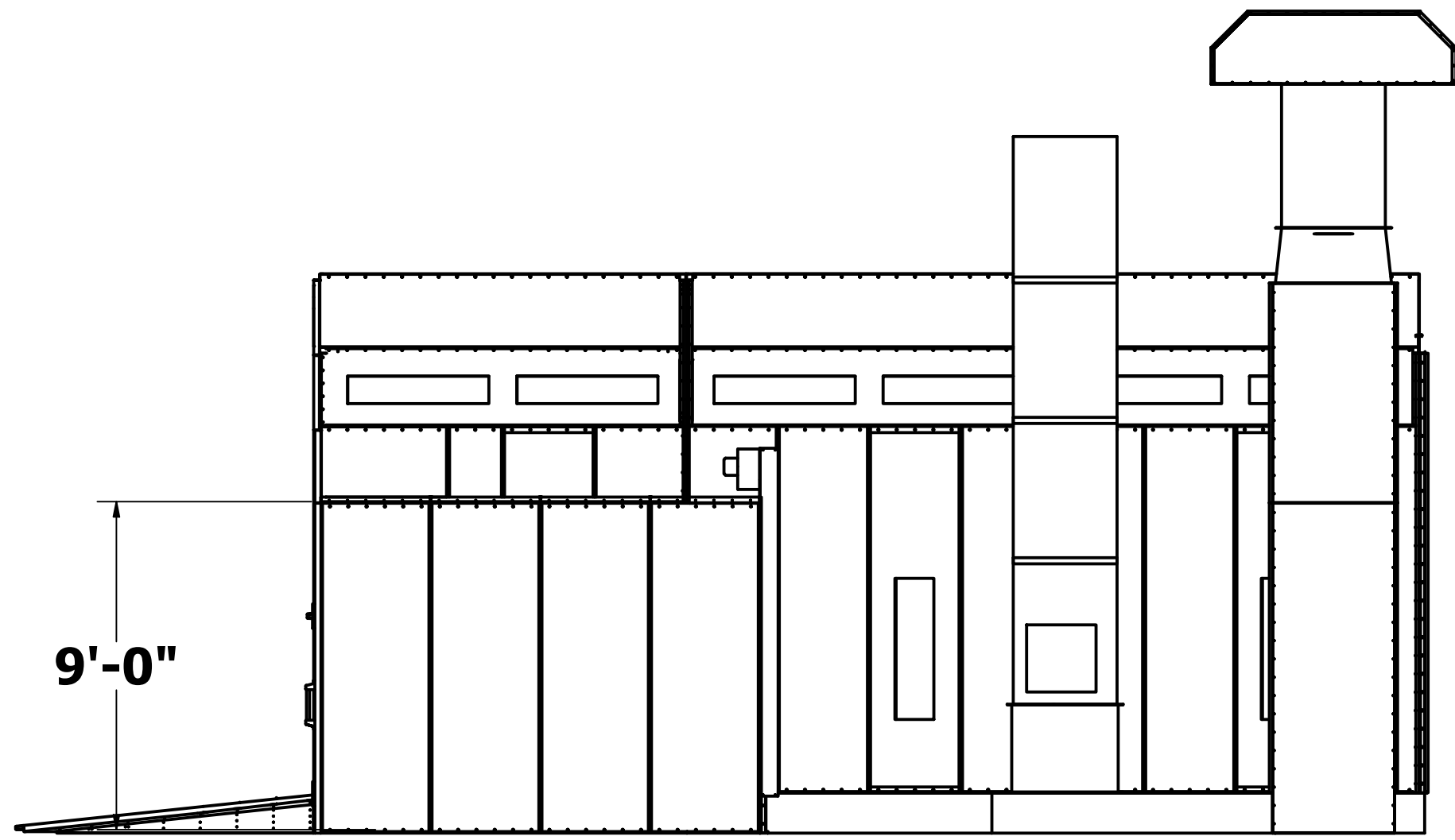
SECTION C-C
SCALE 1 / 50



OUTSIDE
14'-0"
INSIDE



14'-0"
INSIDE
14'-4"
OUTSIDE
7'-0"

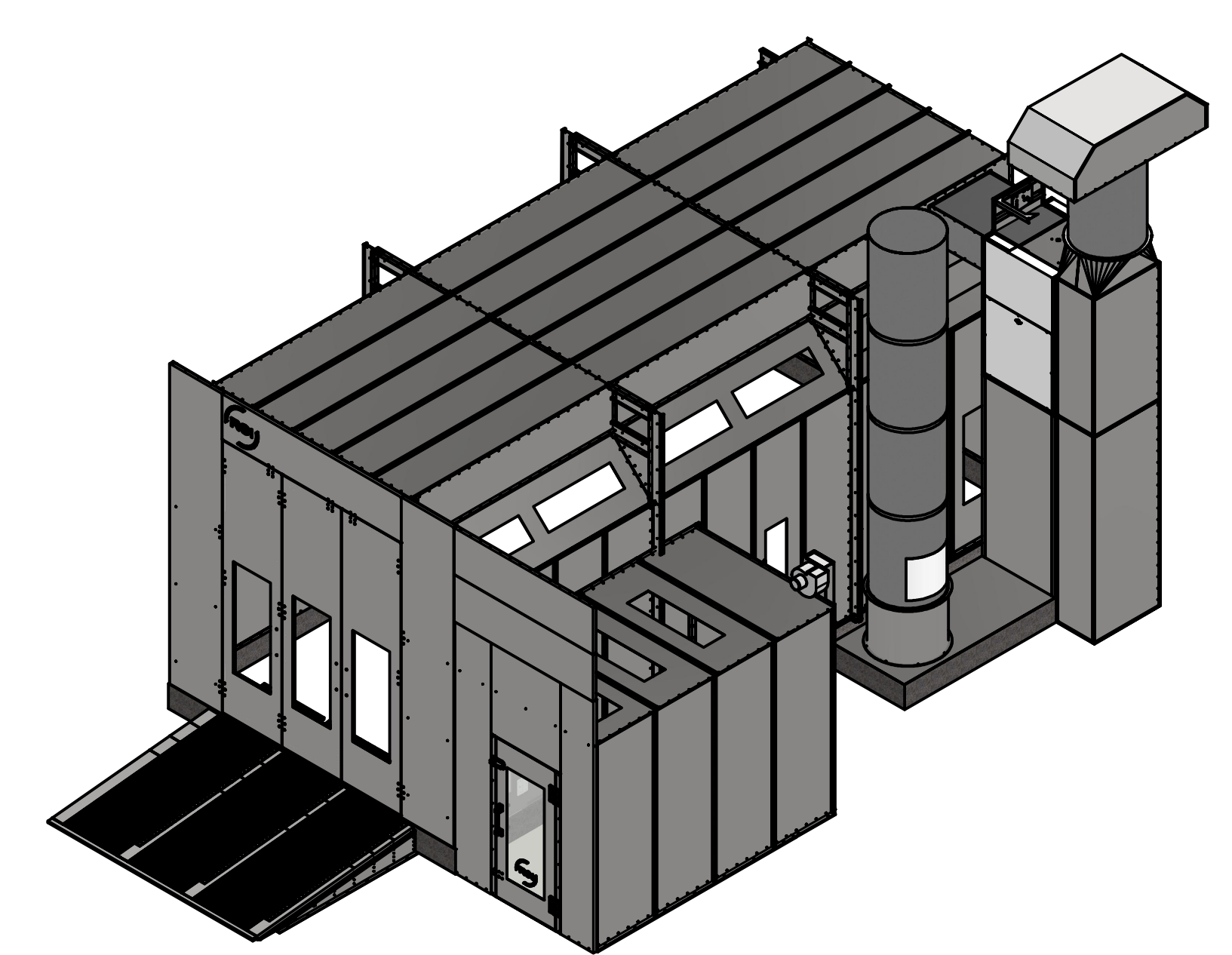


9'-0"

DRAWN Curtis K	4/27/2022	RGI SPRAY BOOTHS	
CHECKED		TITLE	
QA		OMEGA STEALTH	
MFG		30L X 14W X 12H	
APPROVED		DIMENSIONAL	
		SIZE D	DWG NO
		SCALE 1 / 50	LONGMONT CARGO STEALTH 30L X 14W X 12H
		SHEET 2	OF 8

8 7 6 5 4 3 2 1

PARTS LIST				PARTS LIST			
ITEM	QTY	PART NUMBER	DESCRIPTION	ITEM	QTY	PART NUMBER	DESCRIPTION
	18	TRUCK BOOTH GABLE TRIANGLE SUPPORT ANGLE		MD76	1	MAN DOOR HEADER 42 X 36	#2170
TB2	6	TRUCK BOOTH GABLE TRIANGLE SUPPORT CORNER	#1134	P225	1	WP120X18.	#1905
	18	I-BEAM_SIDE_TOP 2 X 2 X 5 ANGLE		CD37	1	CAR DOOR HEADER PANEL	#7471 #1468
	2	I-BEAM_SIDE_BOTTOM 2 X 2 X 5 ANGLE		L1	1	RGI LOGO HEADER	
	2	TRUCK BOOTH CORNER I-BEAM 12'					
IB14	6	I-BEAM 14'	#0940 #0939				
IB10	3	I-BEAM 15'					
Z120	8	ZC120	#0705				
Z60	1	ZC60		CD88	1	PURA-CALI CAR 12' DOOR #1	#1221 #1220
P226	2	WPBC144X42_16	#0944	CD89	1	PURA-CALI CAR 12' DOOR #2	#1221 #1219
P47	2	WP144X36.	#0357	CD90	1	PURA-CALI CAR 12' DOOR #3	#1223 #1222
P200	1	WP144X24	#1954 #0358	CD86	1	PURA-CALI HINGE PANEL 168 X 31.75 RIGHT	#0315 #0316
F84	3	FLOOR CHANNEL 84 NEW DESIGN			1	PURA-CALI CAR DOOR 12' U CHANNEL 142_240 X 2	#1931
P43	10	WPIBC120X30_16GA	#0940	CD87	2	PURA-CALI HINGE PANEL 168 X 31.75 LEFT	#0318 #0317
P44	8	WP120X30_16GA	#0939				
F116	6	FLOOR CHANNEL 116 NEW DESIGN					
G120D V	6	GABLE 120 DELTA & VECTOR TRUCK BOOTH	#0894				
P45	6	WPLF120X30_16G	#1212	P208	4	WP108X36	#0117
IF2	6	INTAKE FILTER SHEET HOUSING SIDE 120	#4240	F120	1	FLOOR CHANNEL 120 NEW DESIGN	
	12	INTAKE FILTER SHEET HOUSING END 36	#1846	F24	1	FLOOR CHANNEL 24 NEW DESIGN	
	12	INTAKE FILTER CROSS ANGLE					
IF6	6	INTAKE FILTER BLANKET GRID SIDE & END_REV 2	#0495				
	60	INTAKE BLANKET FILTER FRAME CROSS BAR	#0351				
H7	18	SierraPacific-1190					
P46	3	WP120X24.	#1850				
MD78	2	MAN DOOR 83.75 X 35.75	#7415 #7410				
MD79	2	MAN DOOR FRAME 84 X 42	#7403				
L2	2	RGI LOGO WINDOW					
H3	2	CAR DOOR GLASS 60 X 24					
H1	8	CAR DOOR HANDLE BRACKET 2 X 3 X 3					
H2	4	CAR DOOR HANDLE 1.00" DIA TUBE X 12"					
H0	2	SierraPacific-176					
H4	4	CAR DOOR HINGE					

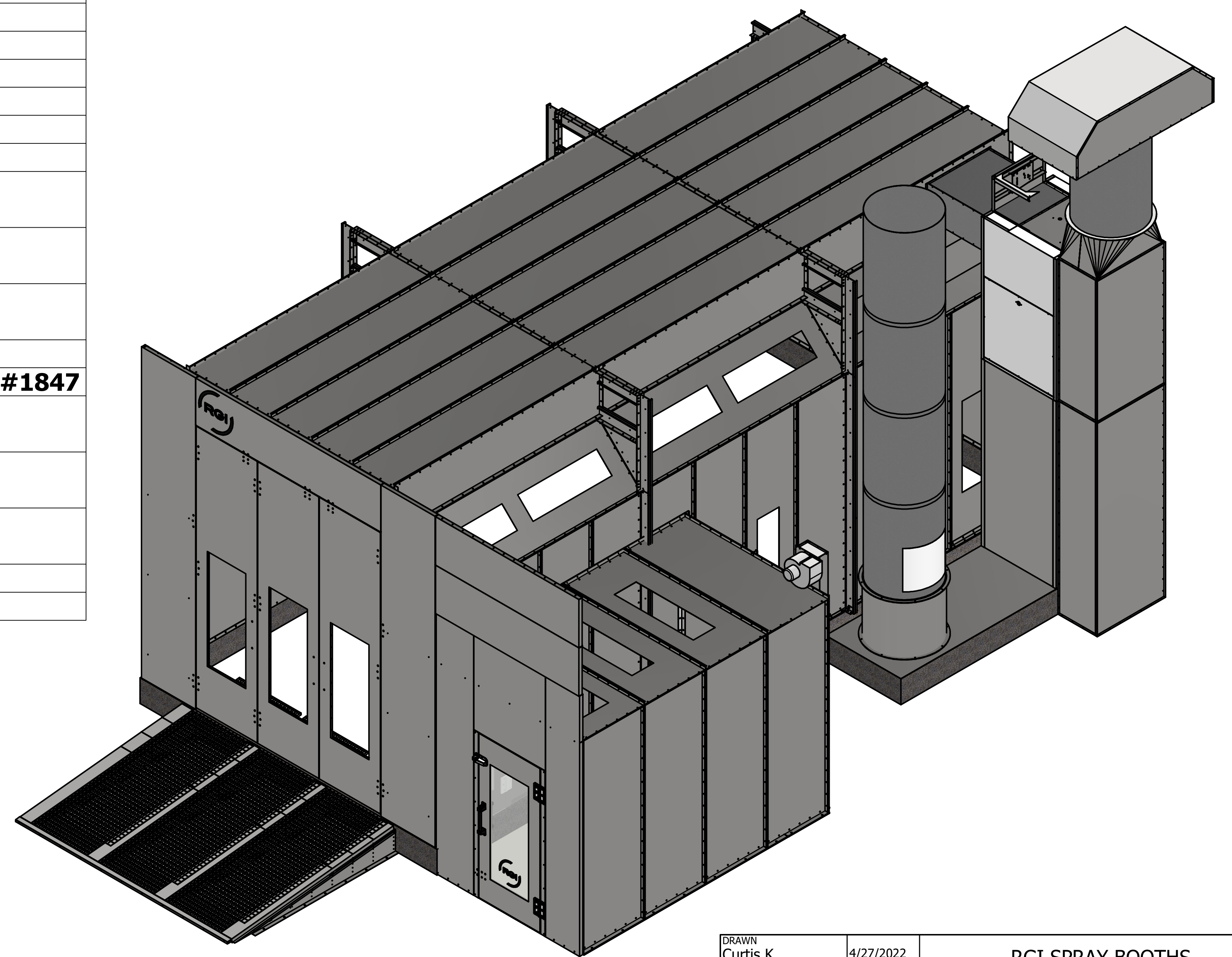


THIS DOCUMENT CONTAINS CONFIDENTIAL AND PROPRIETARY INFORMATION THAT CANNOT BE REPRODUCED OR DIVULGED, IN WHOLE OR IN PART, WITHOUT WRITTEN AUTHORIZATION FROM RGI SPRAY BOOTHS

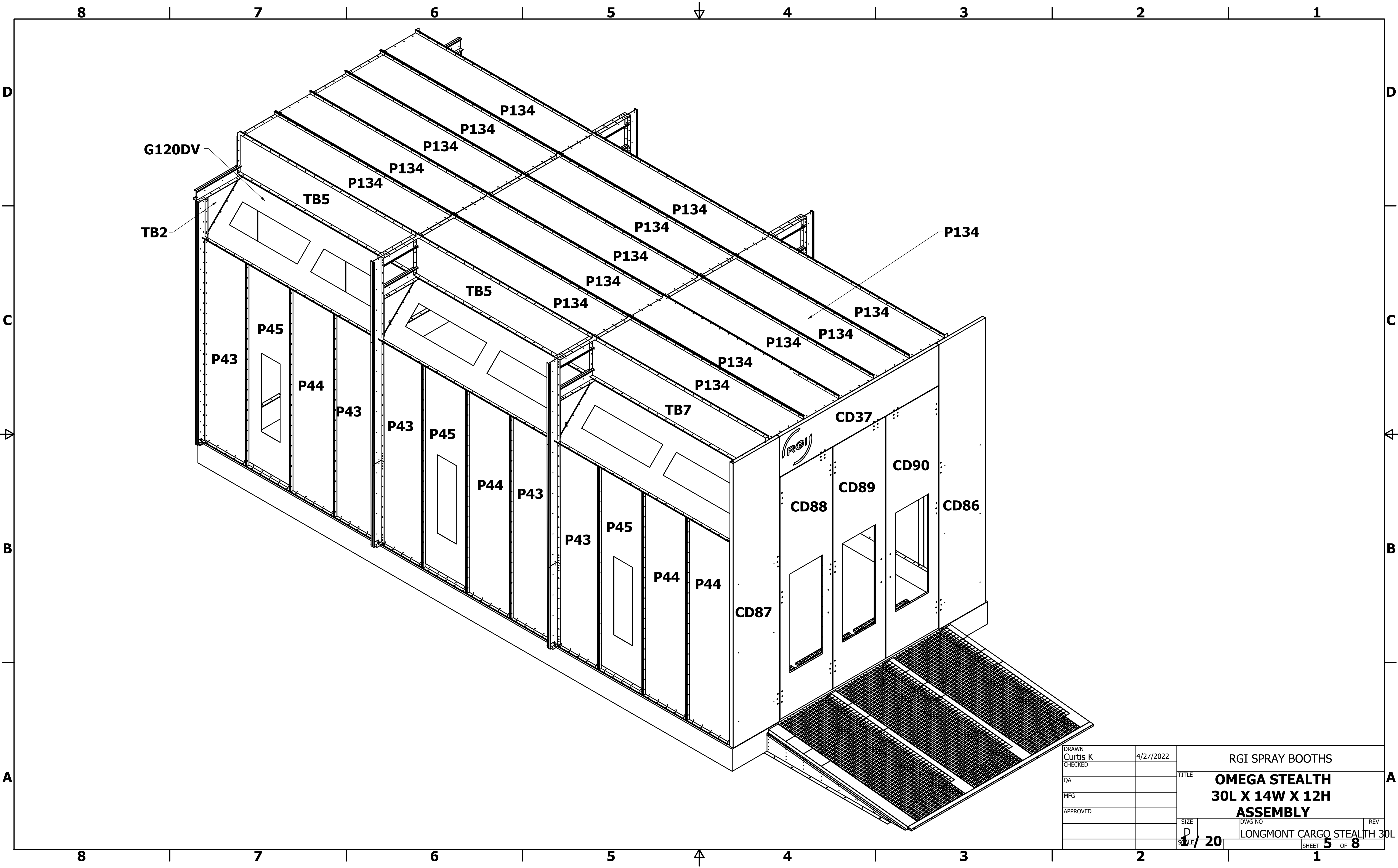
DRAWN Curtis K	4/27/2022	RGI SPRAY BOOTHS	
CHECKED		TITLE	
QA		OMEGA STEALTH	
MFG		30L X 14W X 12H	
APPROVED		PARTS LIST	
		SIZE D	DWG NO
		SCALE 1/62	LONGMONT CARGO STEALTH 30L X 14W X 12H
			REV
		SHEET 3	OF 8

PARTS LIST			
ITEM	QTY	PART NUMBER	DESCRIPTION
MX48	1	FRONT MAN DOOR HEADER 48 X 42	#2152
MX40	4	MIXING ROOM CROSS ANGLE 42	
MX32	1	MIXING ROOM FRONT WP132X20_RIGHT SIDE OF MD	#1885
MX21	1	MIXING ROOM CEILING FILTER PANEL 84 X 36_ 2" SIDE FLANGES	
P9	2	WPLF84X36	#0072
P15	1	WP84X36.	#0435 #0479
MX5	1	MIXING ROOM PLENUM BACK	
MX6	2	MIXING ROOM PLENUM END	
MX7	1	MIXING ROOM PLENUM WITH NO GRILL 114"	#0687
H18	1	DAYTON BLOWER 1TDU2	
MX34	1	MIXING ROOM VENT WPBC110X44_W_1/2" FLANGE	#1941
MX36	1	MIXING ROOM FRONT WP132X20_HP SIDE	#1884
A144	2	ANGLE 2 X 2 X 144	
A94	1	ANGLE 2 X 2 X 94	
P227	2	WPBX84X24_600	#1944
TB5	4	TRUCK BOOTH DELTA HEATER PLENUM SIDE PANEL 120 X 21.900	#1118
TB6	1	TRUCK BOOTH DELTA HEATER PLENUM SIDE PANEL 120 X 21_900 F & B SIDE 1	#1119
TB7	1	TRUCK BOOTH DELTA HEATER PLENUM SIDE PANEL 120 X 21_900 F & B SIDE 2	#1120
A120	1	ANGLE 2 X 2 X 120	
TB21	1	TRUCK BOOTH HEATER PLENUM BACK PANEL124X18	#1970
P134	15	WP120X24G	#1850 #1847
H1M-D 5	2	HEATER 1M BTU BOOTH CONNECTION DUCT 36 X 18	
H1M-D 4	2	HEATER 1M BTU BOOTH CONNECTION DUCT 36 X 36	
FN34	1	FAN 34	

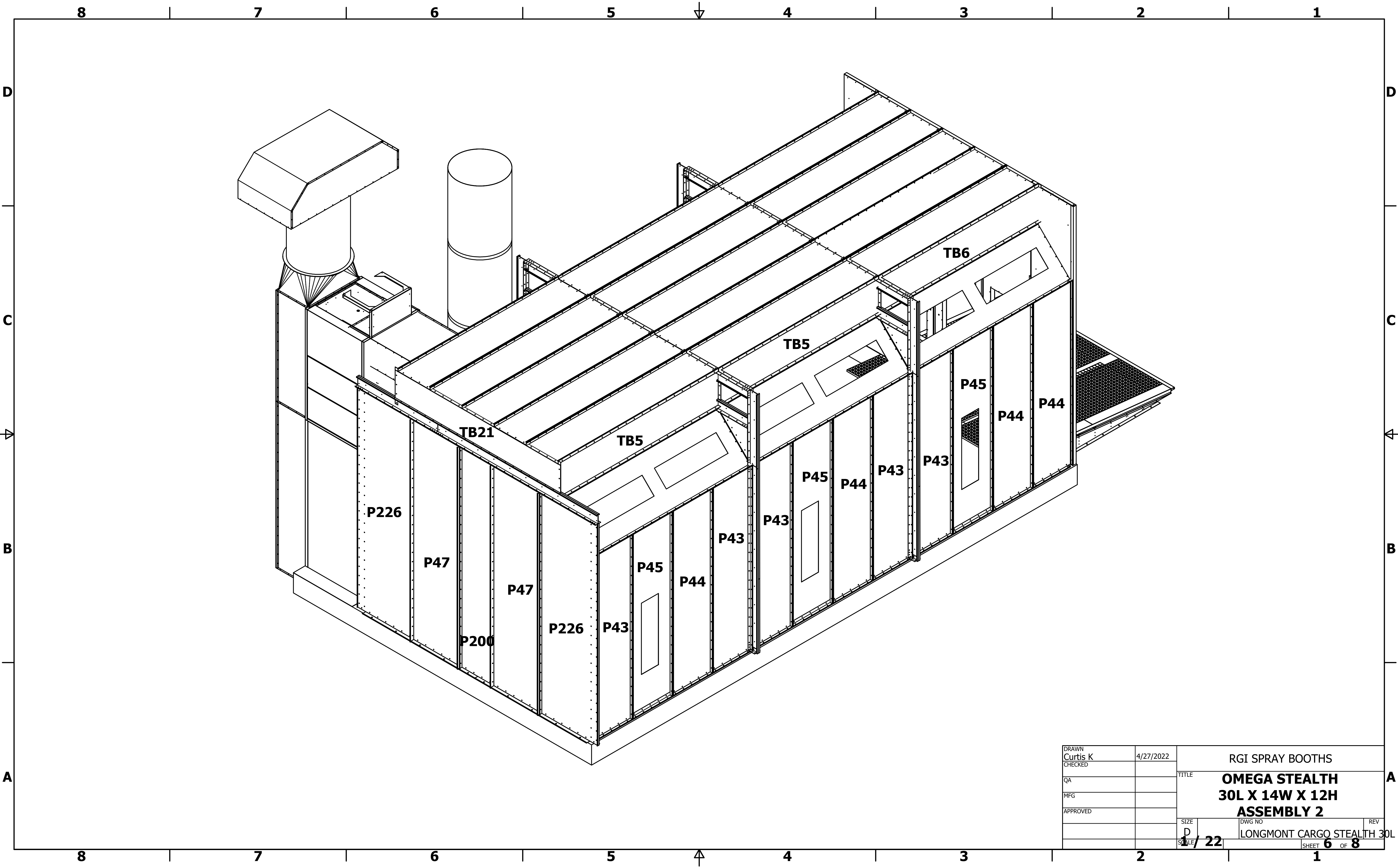
PARTS LIST			
ITEM	QTY	PART NUMBER	DESCRIPTION
P96	1	WP110X42_0.500 FLANGE	



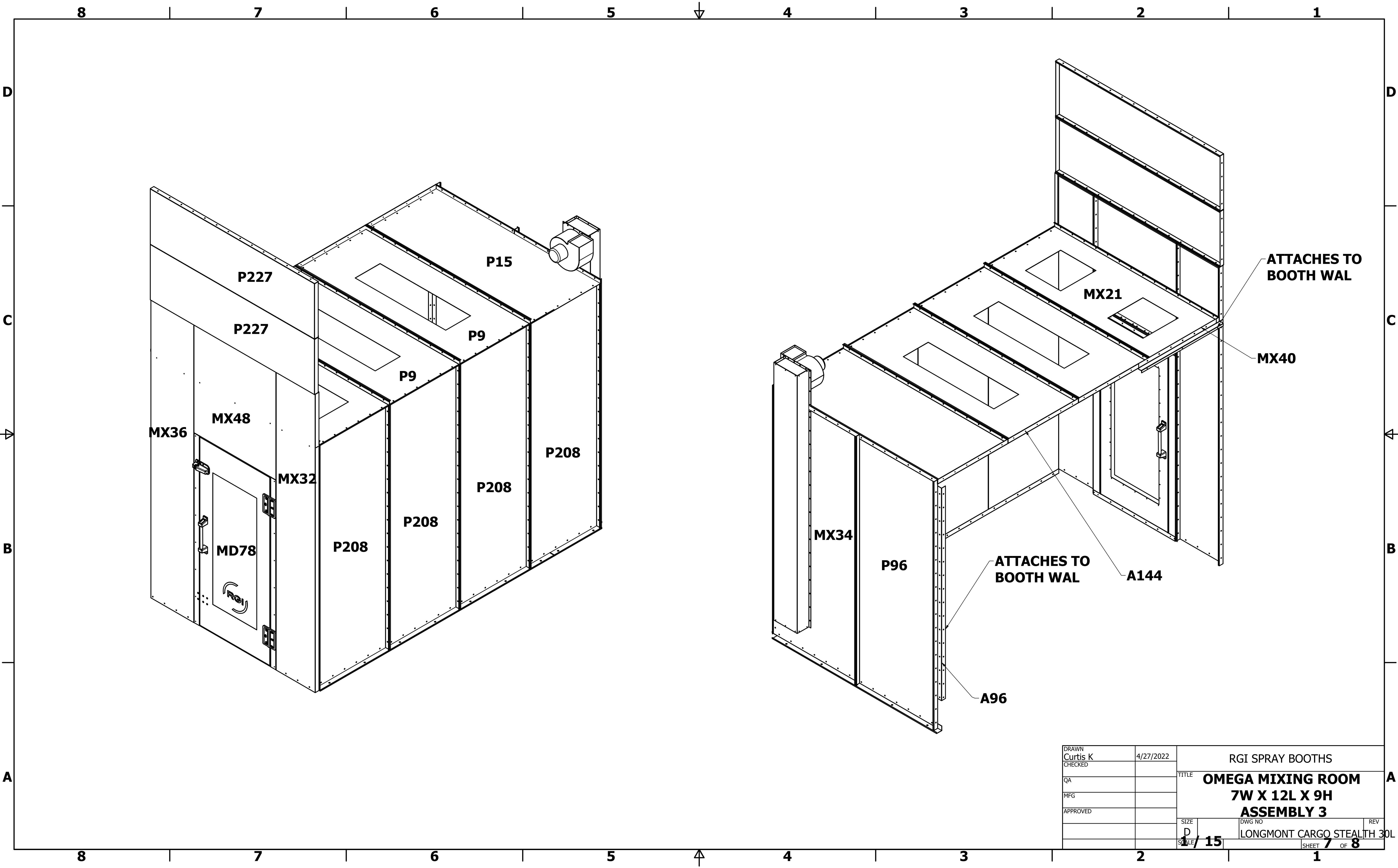
DRAWN Curtis K	4/27/2022	RGJ SPRAY BOOTHS	
CHECKED		TITLE OMEGA STEALTH 30L X 14W X 12H PARTS LIST	
QA		SIZE D	DWG NO
MFG		SCALE 1/30	REV
APPROVED		LONGMONT CARGO STEALTH 30L X 14W X 12H	
		SHEET 4 OF 8	



DRAWN Curtis K	4/27/2022	RGI SPRAY BOOTHS	
CHECKED		TITLE OMEGA STEALTH 30L X 14W X 12H ASSEMBLY	
QA		SIZE D	DWG NO
MFG		SCALE 1/20	REV
APPROVED		LONGMONT CARGO STEALTH 30L X 14W X 12H	
		SHEET 5	OF 8



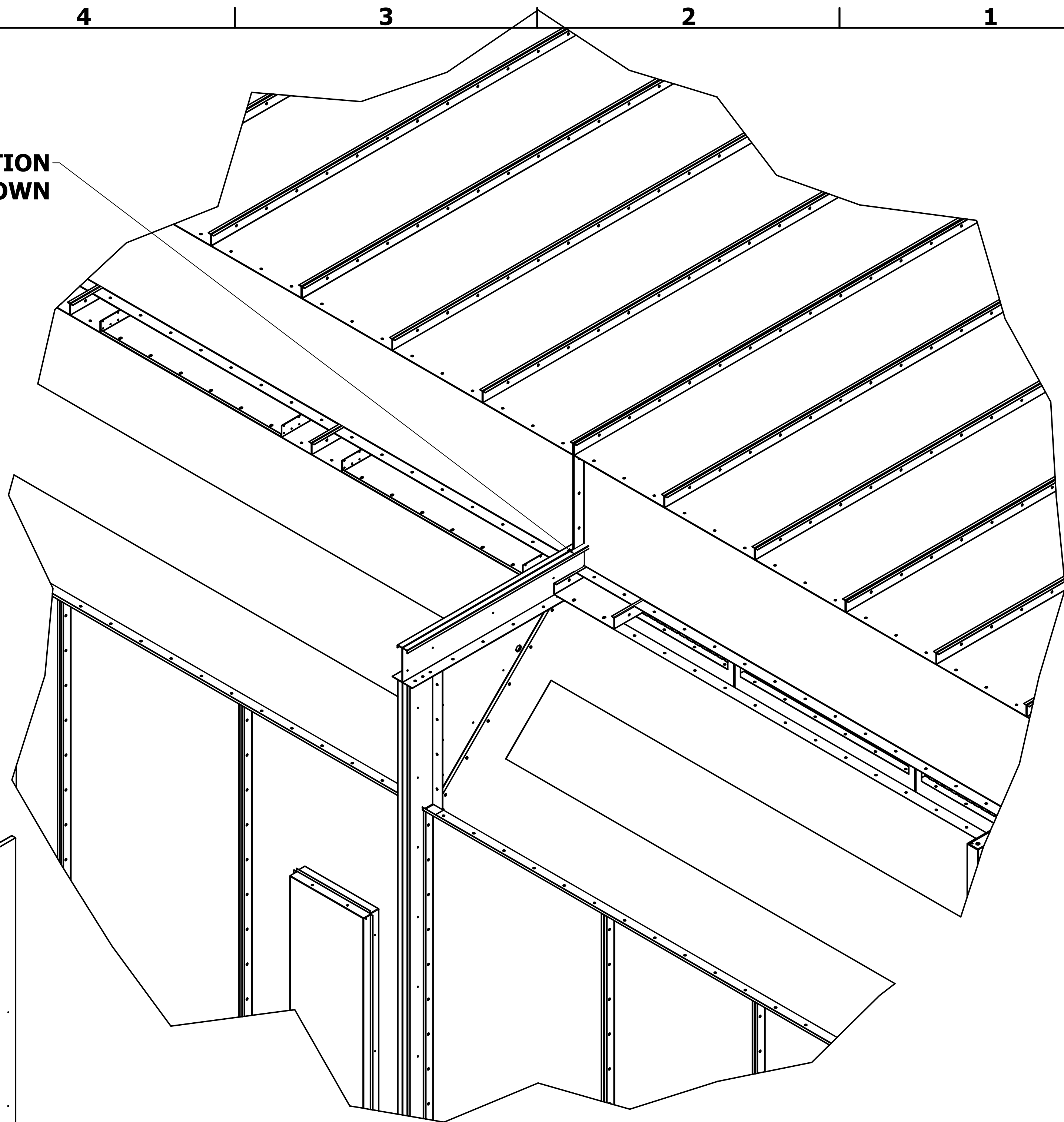
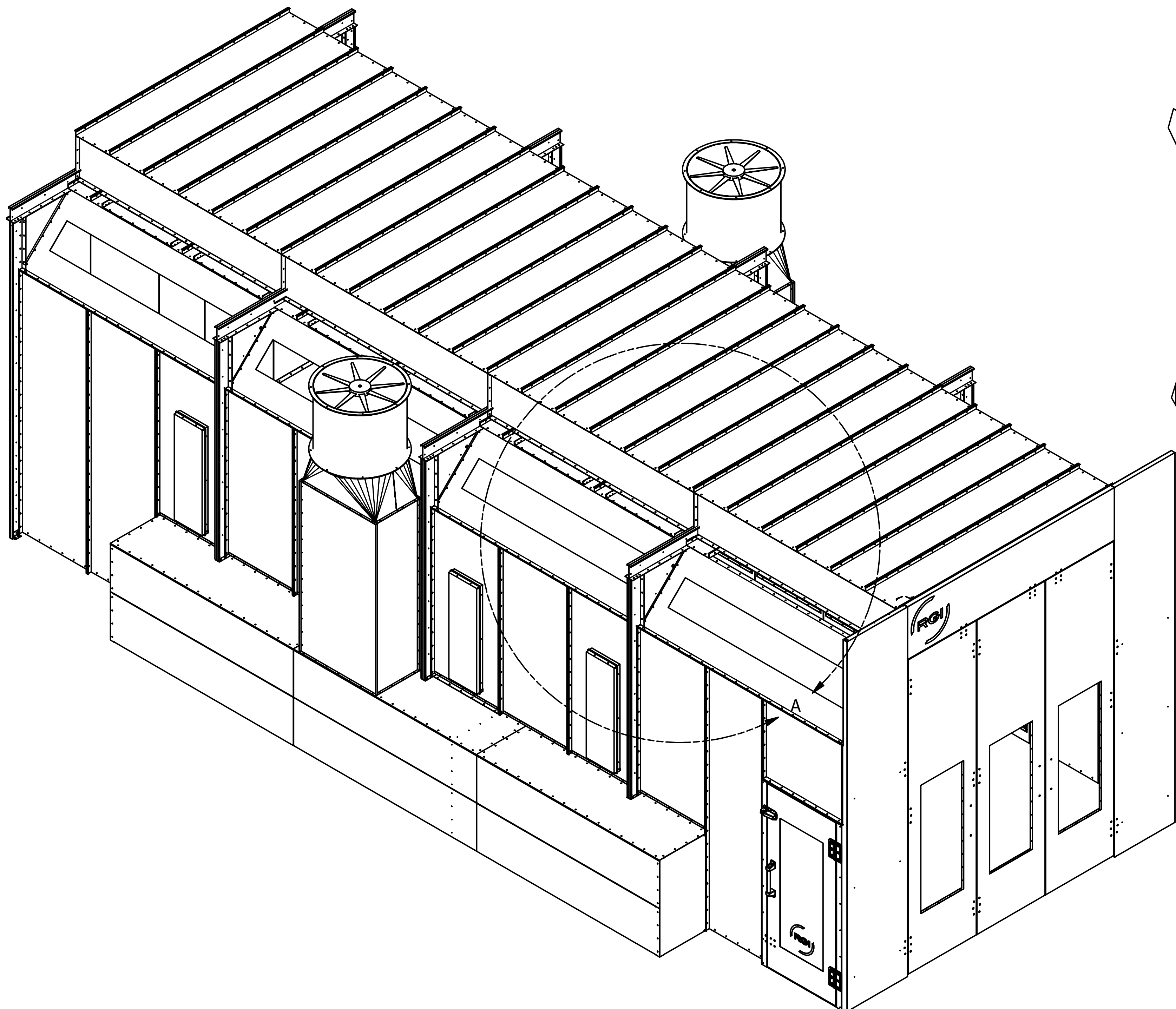
DRAWN Curtis K	4/27/2022	RGI SPRAY BOOTHS	
CHECKED		TITLE	
QA		OMEGA STEALTH	
MFG		30L X 14W X 12H	
APPROVED		ASSEMBLY 2	
		SIZE D	DWG NO
		SCALE 1 / 22	LONGMONT CARGO STEALTH 30L X 14W X 12H
		SHEET 6 OF 8	REV



DRAWN Curtis K	4/27/2022	RGI SPRAY BOOTHS	
CHECKED		TITLE OMEGA MIXING ROOM	
QA		7W X 12L X 9H	
MFG		ASSEMBLY 3	
APPROVED		SIZE D	DWG NO
		SCALE 1/15	REV
		LONGMONT CARGO STEALTH 30L X	
		SHEET 7 OF 8	

8 7 6 5 4 3 2 1

I-BEAMS WILL NOT HAVE TOP CONNECTION
AND WILL BE ASSEMBLED AS SHOWN



DETAIL A
SCALE 1/25

DRAWN	4/27/2022
CHECKED	
QA	
MFG	
APPROVED	
SIZE	
D	
SCALE	1/25

TITLE	
RGI SPRAY BOOTHS	
OMEGA STEALTH	
30L X 14W X 12H	
I-BEAM	
DWG NO	REV
LONGMONT CARGO STEALTH 30L X	
SHEET 8	OF 8

8 7 6 5 4 3 2 1