



KAR 82 - 6 "Equilibrium"





KAR 82 Control Cabinet





KAR 82 Patented Volumetric Hydraulic/Mechanical Control





KAR 82 Expandable Radius Plate Pockets



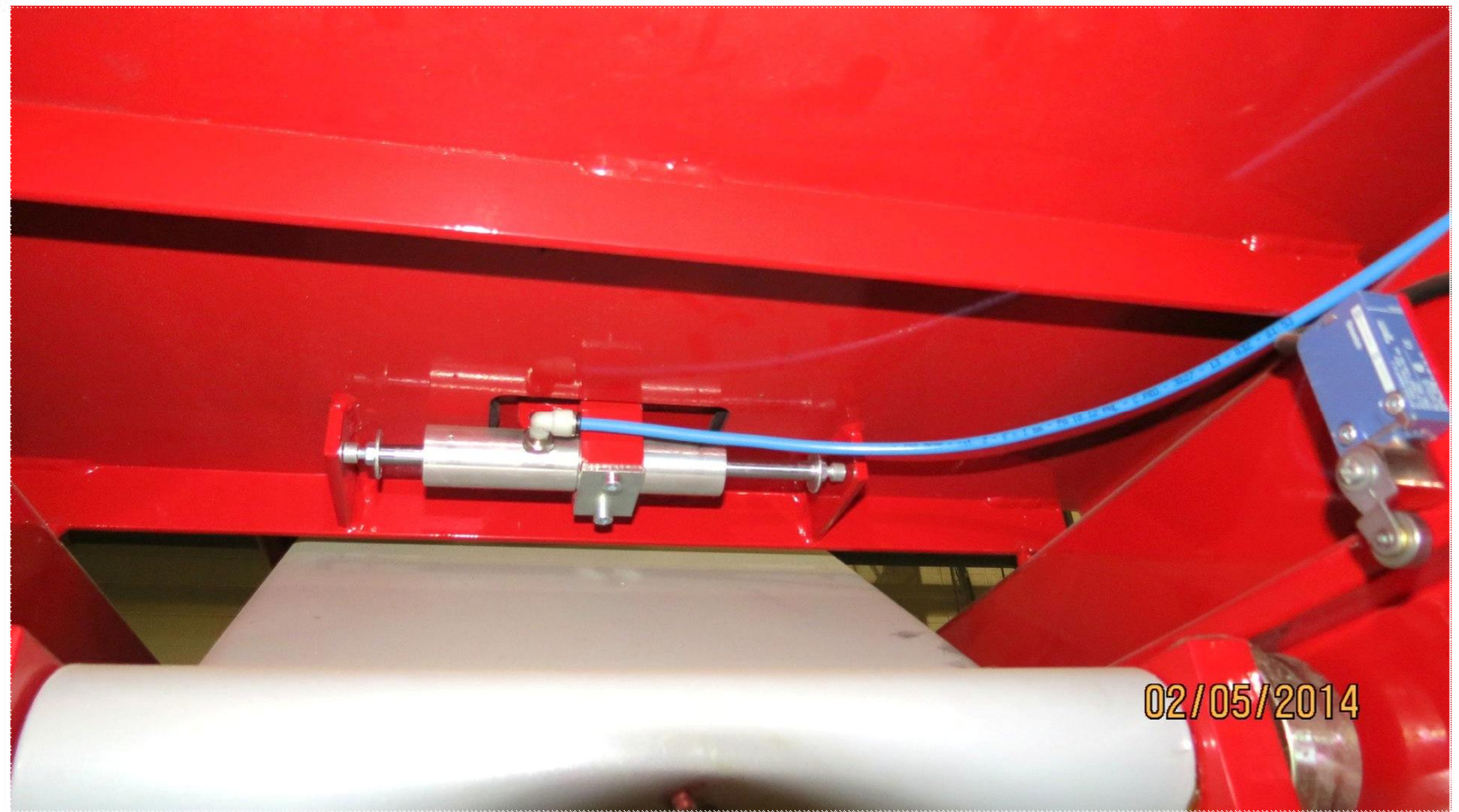


KAR 82 Pneumatic Locking Rear Slip Plates





KAR 82 – Rear Slip Plate Locking Cylinder





KAR 82 - Photo Electric Eye





KAR 82 – Runway Integrated Lifting Tables





KAR 82 - Jacking Beam Track Standard



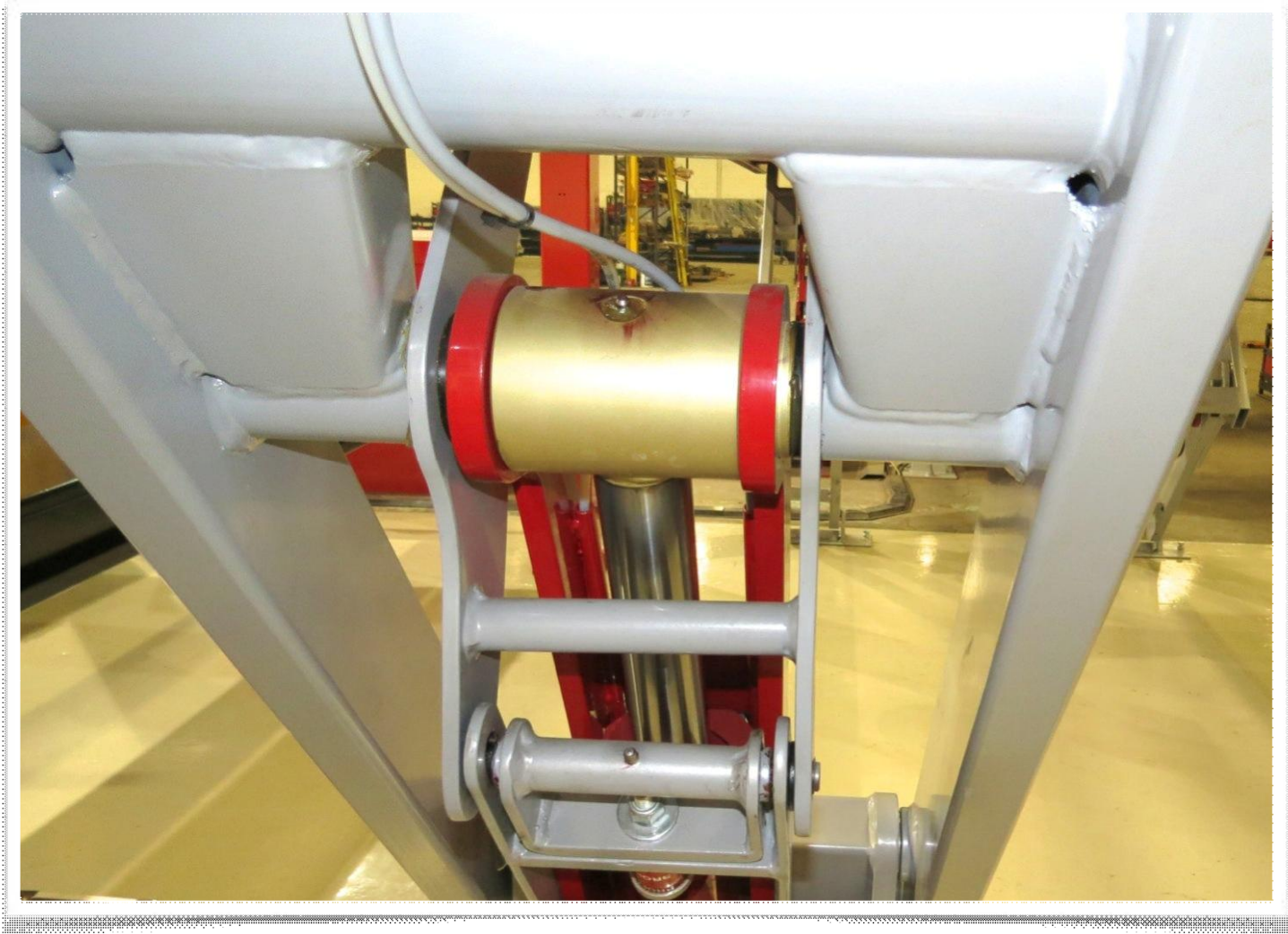


KAR 82 - Lifting Table Truck Arm Extensions





KAR 82 - Zirk Style Grease Fittings at all Hinge Points





KAR 82 – Chrome Plated Hydraulic Plunger Rod





KAR 82 – Patented AOS Runway Torque Energy Absorbing System



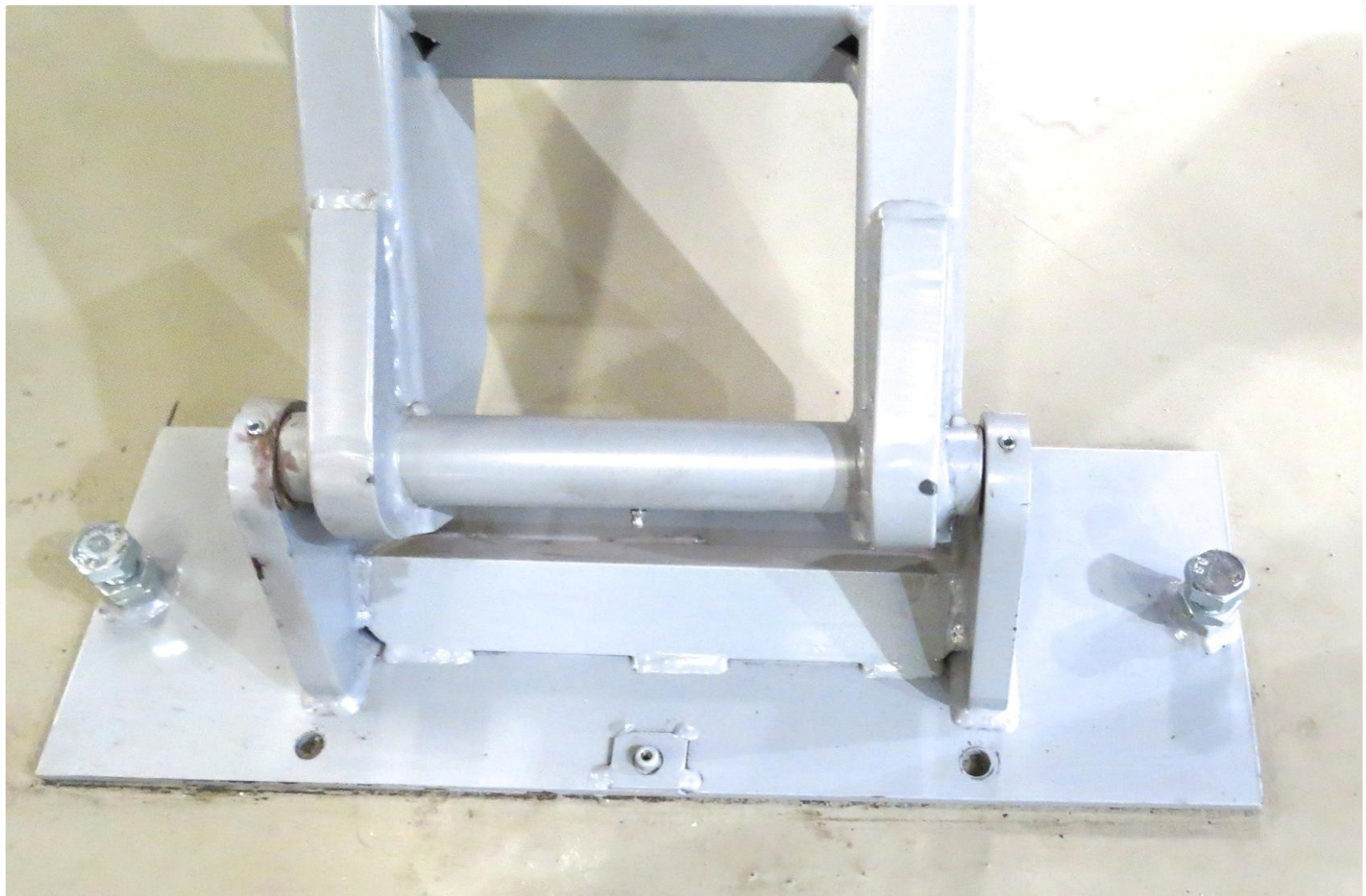


KAR 82 -Cantilever Style Lifting Table





KAR 82 - Base Plate Levelling Bolts





KAR 82 – 16 Point Mechanical Locks with Pneumatic Locks





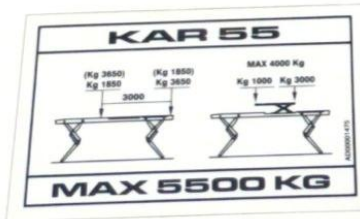
KAR 82 - User Friendly Control with Key Lock



**ATTENZIONE
CAUTION
ACHTUNG
ATTENTION
ATENCIÓN**

⚡

(I) TOGLIERE LA TENSIONE PRIMA DI APRIRE IL QUADRO ELETTRICO.
TURN-OFF THE POWER BEFORE OPENING THE ELECTRIC BOX.
(GB)
(D) DIE SPANNUNG AUSSCHALTEN BEVOR DEN SCHALTAFEL ZU ÖFFNEN.
(F) ENLEVER LA TENSION AVANT D'OUVRIR LE TABLEAU ELECTRIQUE.
(E) QUITAR LA CORRIENTE ANTES DE ABRIR EL CUADRO ELECTRICO.



SAFETY RULES

- THE LIFT MAY BE OPERATED BY ANY PERSON.
- READ THE INSTRUCTION MANUAL CAREFULLY.
- THE LIFT SHOULD BE POSITIONED ON A LEVEL SURFACE.
- BEFORE OPERATING THE LIFT, CHECK THAT THE SAFETY DEVICES ARE WORKING CORRECTLY.
- BEFORE LIFTING THE VEHICLE, CHECK THAT IT IS SLIGHTLY RAISED BY SLIGHTLY PULLING THE LIFT UP.
- WHILE THE LIFT IS IN MOTION, KEEP UNDER OBSERVATION.
- KEEP OUT OF RANGE OF THE LIFT.

02/05/19

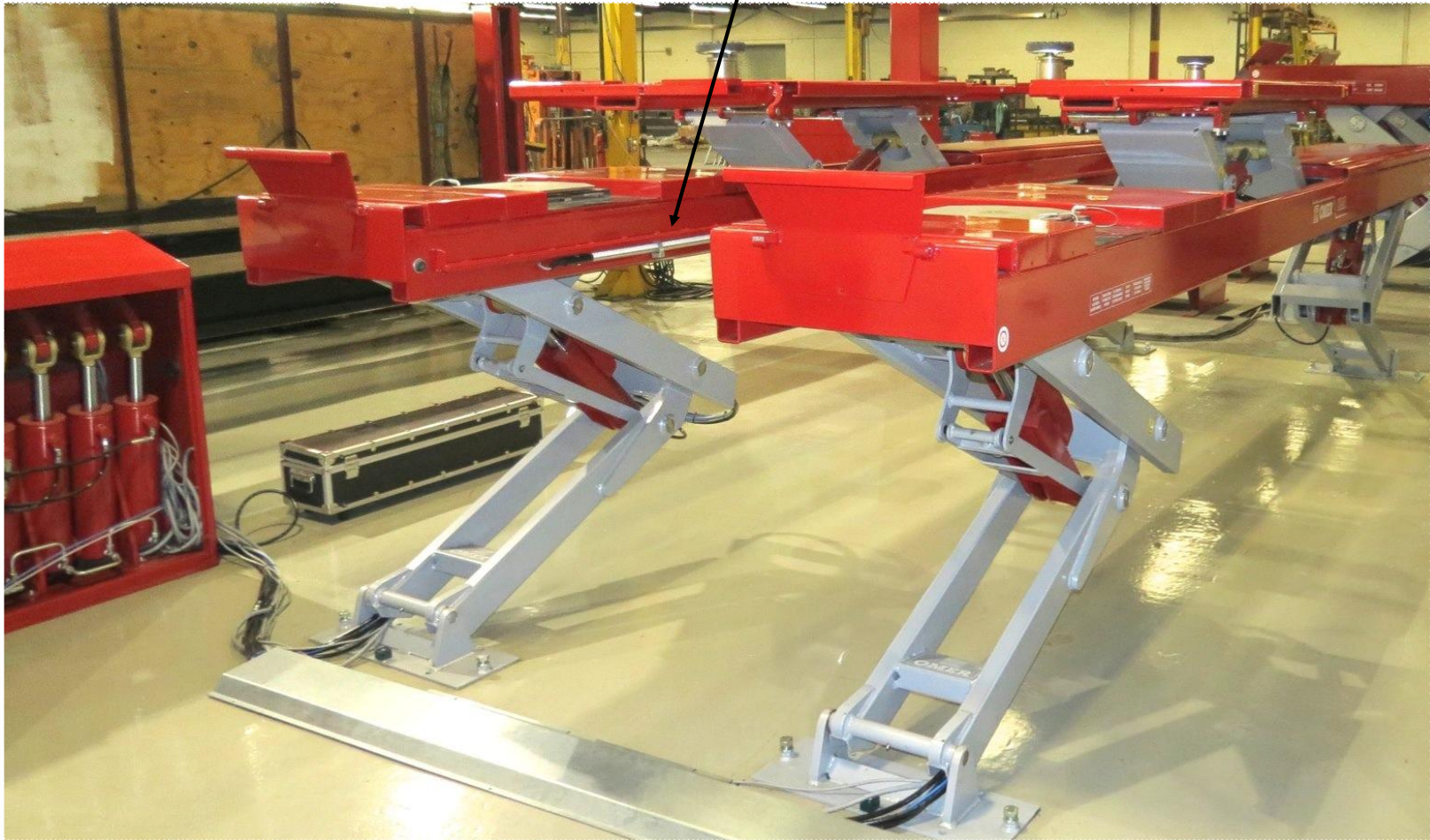


KAR 82 – 81.5" Lifting Height





KAR 82 - 24v LED Lighting





KAR 82 - Steel Pellet Blasted Steel Structure with Baked on Powder Coat

