



CEMB[®] **USA**
WHEEL SERVICE EQUIPMENT

ER71

A space saving motorized wheel balancer with high-end performance and time saving, advanced features. Extremely accurate with simple to use interface with multi-function LED display.



- Automatic Approach**
- LED Display**
- 2D Automatic Gauge**
- Ergonomic Design**
- Laser Line**
- Manual Locking**
- Virtual Sonar**
- Electromagnetic Brake**

STANDARD MANUAL ACCESSORIES

Rim Width Gauge
46FC77653



Weight Hammer
301400425



Manual Locking Kit
41FF83146



Cones
40FF88351



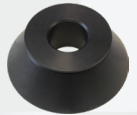
40FF43715



40FF43716



40FF61043



PROKIT ACCESSORIES

Accessory Rack
41FF03151



Pin Plate Adaptor
41FFA6478



2-Piece Truck Cone Kit
41FF86174



Pneumatic Wheel Lift
46FL85170



DIMENSIONS

Power Supply: 110V, 1ph
Wheel Clamping Type: Manual
Max. Rim Diameter: 30" (765 mm)
Max. Rim Width: 20" (510 mm)
Max. Tire Diameter: 40" (1016 mm)
Max. Wheel Weight: 165 lbs. (75 kg)
Shipping Weight: 260 lbs. (118 kg)



CEMB[®] **USA**
WHEEL SERVICE EQUIPMENT

678-717-1050

www.cemb-usa.com