



CEMB[®] U S A
WHEEL SERVICE EQUIPMENT

SM1100

Combines the best of multiple tire changer technologies; offering speed and efficiency throughout a wide range of applications. Easily adapts to ultra-low-profile, run-flat tires, special custom rims, every day wheels and even commercial light truck and industrial wheels.

- Center-Post Wheel Lift**
- Bead Pressing System**
- Leverless System**
- Side Shovel**
- Bead Roller System**



STANDARD MANUAL ACCESSORIES

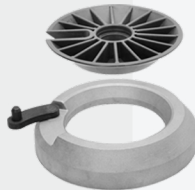
Universal Locking Flange



Plastic Lever



VR Fixing Accessory Kit



Hands Free Clamp



Leverless Head Front Insert



Leverless Head Rear Insert



Lock Handle Protection



Cone Protection



Cone D.58



Cone D.145



Cone D.75



Cone D.120



DIMENSIONS

Power Supply:	220V, 1ph
Air Pressure:	1 15-145 psi
Max. Rim Diameter:	30" (765 mm)
Max. Rim Width:	15" (380 mm)
Max. Tire Diameter:	40" (914 mm)
Turn Table Speed:	8-15 rpm
Shipping Weight:	1125 lbs. (510 kg)



CEMB[®] U S A
WHEEL SERVICE EQUIPMENT

678-717-1050

www.cemb-usa.com