

WHEEL BALANCER ACCESSORY CATALOG



TABLE OF CONTENTS

AUTOMOTIVE

WHEEL BALANCER

ACCESSORIES AND KITS

- » Precision Tooling Kits **3-5**
- » Collets & Cone Kits **6**
- » Additional Accessories **7**

MOTORCYCLE

WHEEL BALANCER

ACCESSORIES AND KITS

- » Motorcycle Accessories **8-9**

HEAVY-DUTY

WHEEL BALANCER

ACCESSORIES AND KITS

- » Heavy-Duty Accessories **10-11**

FLANGE PLATE KIT WITH COLLETS

EAK0309J32B

**241E801-409
FLANGE PLATE #1**

» 4x 95.25, 98, 100, 101.6, 108, 114.3, 170mm | 3.75", 4", 4.5"
» 7x 150mm

**251E801-409
FLANGE PLATE #2**

» 5x 98, 105, 108, 110, 115, 120.65, 135, 154.95mm | 4.75"

**251E901-409
FLANGE PLATE #3**

» 5x 100, 108, 112, 114.3, 120, 127, 130, 139.7, 150, 165.1mm | 4.5", 5", 5.5", 6.5"

**231E111-409
FLANGE PLATE #4**

» 3x 198, 112, 114.3, 115, 120, 127, 130, 132mm | 4.5", 5"
» 4x 165.1mm | 6.5"
» 6x 135, 139.7mm | 5.5"

**271-904-119
ROUNDED PIN (5)**

» Head Ø 24.5mm
» Length 90mm

**271-804-118
SHORT TAPERED PIN (6)**

» Head Ø 34.5mm
» Length 80mm

**271-994-121
LONG TAPERED PIN (7)**

» Head Ø 22.5mm
» Length 100mm

**490-008-000
MEASURING TOOL**

**EAK0309J67A
STORAGE STAND**

**VID-20X-001
APPLICATION GUIDE**

**ERM0192G23A
COLLET #1**

» 48.3-61mm | 2.29-2.40"

**ERM0192G24A
COLLET #2**

» 55.9-68.6mm | 2.20-2.70"

**ERM0192G25A
COLLET #3**

» 63.50-76.2mm | 2.50-3.00"

**ERM0192G26A
COLLET #4**

» 71.1-83.8mm | 2.79-3.29"

**ERM0192G27A
COLLET #5**

» 78.7-91.4mm | 3.09-3.59"

**ERM0192G28A
COLLET #6**

» 86.4-99.1mm | 3.40-3.90"

**ERM0192G29A
COLLET #7**

» 94-106.7mm | 3.70-4.20"

**ERM0192G30A
COLLET #8**

» 101.6-114.3mm | 4.00-4.50"

**ERM0192G31A
COLLET #9**

» 109.2-121.9mm | 4.29-4.79"

**EAK0309J54A
SPACER KIT**



FLANGE PLATE SET

200-008-402

**241E801-409
FLANGE PLATE #1**

» 4x 95.25, 98, 100, 101.6, 108, 114.3, 170mm | 3.75", 4", 4.5"
» 7x 150mm

**251E801-409
FLANGE PLATE #2**

» 5x 98, 105, 108, 110, 115, 120.65, 135, 154.95mm | 4.75"

**251E901-409
FLANGE PLATE #3**

» 5x 100, 108, 112, 114.3, 120, 127, 130, 139.7, 150, 165.1mm | 4.5", 5", 5.5", 6.5"

**231E111-409
FLANGE PLATE #4**

» 3x 198, 112, 114.3, 115, 120, 127, 130, 132mm | 4.5", 5"
» 4x 165.1mm | 6.5"
» 6x 135, 139.7mm | 5.5"

**271-904-119
ROUNDED PIN (5)**

» Head Ø 24.5mm
» Length 90mm

**271-804-118
SHORT TAPERED PIN (6)**

» Head Ø 34.5mm
» Length 80mm

**271-994-121
LONG TAPERED PIN (7)**

» Head Ø 22.5mm
» Length 100mm

**490-008-000
MEASURING TOOL**



POWER CLAMP™ SPEED PLATE KIT WITH COLLETS

EAK0309J33C

**1-55284A
POWER CLAMP SPEED PLATE
4 & 8-LUG**

» PCD Range: 92.25-180mm

**1-55384A
POWER CLAMP SPEED PLATE
5-LUG**

» PCD Range: 92.25-180mm

**1-55484A
POWER CLAMP SPEED PLATE
6-LUG**

» PCD Range: 92.25-180mm

**1-49784A
SHORT CONE SEAT STUD (6)**

» Head Ø 28mm
» Body Length 25mm
» Overall Length 80mm

**1-49884A
BALL SEAT STUD (6)**

» Head Ø 22.5mm
» Body Length 40mm
» Overall Length 95mm

**1-49984A
NARROW CONE SEAT STUD (6)**

» Head Ø 19mm
» Body Length 40mm
» Overall Length 95mm

**1-50084A
LONG BALL SEAT STUD (6)**

» Head Ø 22.5mm
» Body Length 65mm
» Overall Length 120mm

**EAK0309J67A
STORAGE STAND**

**ERM0192G23A
COLLET #1**

» 48.3-61mm | 2.29-2.40"

**ERM0192G24A
COLLET #2**

» 55.9-68.6mm | 2.20-2.70"

**ERM0192G25A
COLLET #3**

» 63.50-76.2mm | 2.50-3.00"

**ERM0192G26A
COLLET #4**

» 71.1-83.8mm | 2.79-3.29"

**ERM0192G27A
COLLET #5**

» 78.7-91.4mm | 3.09-3.59"

**ERM0192G28A
COLLET #6**

» 86.4-99.1mm | 3.40-3.90"

**ERM0192G29A
COLLET #7**

» 94-106.7mm | 3.70-4.20"

**ERM0192G30A
COLLET #8**

» 101.6-114.3mm | 4.00-4.50"

**ERM0192G31A
COLLET #9**

» 109.2-121.9mm | 4.29-4.79"

**EAK0309J54A
SPACER KIT**



EAKO390G25A



1-55284A
POWER CLAMP SPEED PLATE
4 & 8-LUG
» PCD Range: 92.25-180mm

1-55384A
POWER CLAMP SPEED PLATE
5-LUG
» PCD Range: 92.25-180mm

POWER CLAMP™ SPEED PLATE KIT

1-55484A
POWER CLAMP SPEED PLATE
6-LUG
» PCD Range: 92.25-180mm

1-49784A
SHORT CONE SEAT STUD (6)
» Head Ø 28mm
» Body Length 25mm
» Overall Length 80mm

1-49884A
BALL SEAT STUD (6)
» Head Ø 22.5mm
» Body Length 40mm
» Overall Length 95mm

1-49984A
NARROW CONE SEAT STUD (6)
» Head Ø 19mm
» Body Length 40mm
» Overall Length 95mm

1-50084A
LONG BALL SEAT STUD (6)
» Head Ø 22.5mm
» Body Length 65mm
» Overall Length 120mm

EAKO390G24A



1-54784A
SPEED PLATE 4 & 8-LUG
» PCD Range: 92.25-180mm

1-54884A
SPEED PLATE 5-LUG
» PCD Range: 92.25-180mm

1-54984A
SPEED PLATE 6-LUG
» PCD Range: 92.25-180mm

1-49784A
SHORT CONE SEAT STUD (6)
» Head Ø 28mm
» Body Length 25mm
» Overall Length 80mm

1-49884A
BALL SEAT STUD (6)
» Head Ø 22.5mm
» Body Length 40mm
» Overall Length 95mm

1-49984A
NARROW CONE SEAT STUD (6)
» Head Ø 19mm
» Body Length 40mm
» Overall Length 95mm

1-50084A
LONG BALL SEAT STUD (6)
» Head Ø 22.5mm
» Body Length 65mm
» Overall Length 120mm

SPEED PLATE SPARE PARTS



1-54784A
SPEED PLATE 4 & 8-LUG
» PCD Range: 92.25-180mm

1-54884A
SPEED PLATE 5-LUG
» PCD Range: 92.25-180mm

1-54984A
SPEED PLATE 6-LUG
» PCD Range: 92.25-180mm

1-49784A
SHORT CONE SEAT STUD (6)
» Head Ø 28mm
» Body Length 25mm
» Overall Length 80mm

1-49884A
BALL SEAT STUD (6)
» Head Ø 22.5mm
» Body Length 40mm
» Overall Length 95mm

1-49984A
NARROW CONE SEAT STUD (6)
» Head Ø 19mm
» Body Length 40mm
» Overall Length 95mm

1-50084A
LONG BALL SEAT STUD (6)
» Head Ø 22.5mm
» Body Length 65mm
» Overall Length 120mm

1-55684A
AUTO CLAMP HANDLE
» For Power Clamp™ shaft

E490-000-10
GEAR ASSEMBLY
» For speed plate 1-49384a,
1-49484a, 1-49584a

1-55784A
GEAR ASSEMBLY
» For speed plate 1-54784a,
1-54884a, 1-54984a

EAKO309J31B



EAKO309J67A
STORAGE STAND

ERM0192G23A
COLLET #1
» 48.3-61mm | 2.29-2.40"

ERM0192G24A
COLLET #2
» 55.9-68.6mm | 2.20-2.70"

ERM0192G25A
COLLET #3
» 63.50-76.2mm | 2.50-3.00"

ERM0192G26A
COLLET #4
» 71.1-83.8mm | 2.79-3.29"

ERM0192G27A
COLLET #5
» 78.7-91.4mm | 3.09-3.59"

ERM0192G28A
COLLET #6
» 86.4-99.1mm | 3.40-3.90"

ERM0192G29A
COLLET #7
» 94-106.7mm | 3.70-4.20"

ERM0192G30A
COLLET #8
» 101.6-114.3mm | 4.00-4.50"

ERM0192G31A
COLLET #9
» 109.2-121.9mm | 4.29-4.79"

ERKO309J54A
SPACER KIT

ERAO307G82A
CLAMPING PLATE

POWER CLAMP™ MEDIUM DUTY KIT SPARE PARTS

700-816-034
PIN PLATE
 » 4x 165.1, 170, 180, 200, 210,
 225mm | 6.6"
 » 5x 184.15, 225mm | 7.25"

700-008-035
66MM CONICAL HEAD PINS (5)
 » Head Ø 24.5mm
 » Length 66mm



MEDIUM DUTY KIT SPARE PARTS

700-400-034
PIN PLATE
 » 4x 165.1, 170, 180, 200, 210,
 225mm | 6.6"
 » 5x 184.15, 225mm | 7.25"

700-008-035
66MM CONICAL HEAD PINS (5)
 » Head Ø 24.5mm
 » Length 66mm



SPARE PINS

700-008-035
SHORT SPARE PIN 66MM
 » Conical Head Ø 24.5mm
 » Length 66mm

700-008-036
LONG SPARE PIN 90MM
 » Conical Head Ø 24.5mm
 » Length 90mm



GMC SIERRA CENTERING KIT

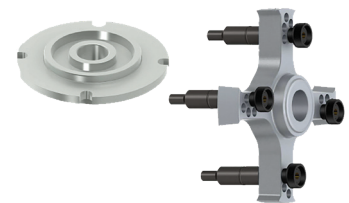
280 400 113

160-400-067
CENTERING DISK
 » Hub pilot disk, double-sided
 » Ø 154mm / Ø 124mm

700E 400 019
4-ARM LUG ADAPTER
 » Ø 170/180/200/210/225

700 008 028
CENTERING BOLT

400E 008 027
KNURLED NUT M10



LIGHT TRUCK ADAPTER KIT

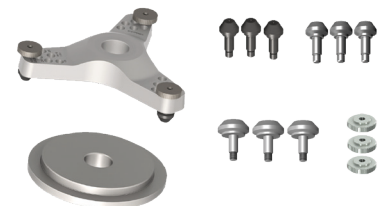
280 400 075

160-400-056
CENTERING DISK
 » Ø 161mm

700E 400 018
3-ARM STAR
700E 008 025
DODGE/SPRINTER STUDS (3)

700E 008 013
FAR EAST STUDS (3)
700E 008 018
EUROPE STUDS (3)

840E 100 001
KNURLED NUT (3)



EAK0375G07A

NINE COLLET SET



ERM0192G23A
COLLET #1

» 48.3-61mm | 2.29-2.40"

ERM0192G24A
COLLET #2

» 55.9-68.6mm | 2.20-2.70"

ERM0192G25A
COLLET #3

» 63.50-76.2mm | 2.50-3.00"

ERM0192G26A
COLLET #4

» 71.1-83.8mm | 2.79-3.29"

ERM0192G27A
COLLET #5

» 78.7-91.4mm | 3.09-3.59"

ERM0192G28A
COLLET #6

» 86.4-99.1mm | 3.40-3.90"

ERM0192G29A
COLLET #7

» 94-106.7mm | 3.70-4.20"

ERM0192G30A
COLLET #8

» 101.6-114.3mm | 4.00-4.50"

ERM0192G31A
COLLET #9

» 109.2-121.9mm | 4.29-4.79"

ERM0209G06A

#10 COLLET



ERM0209G06A
COLLET #10

» 120-126.5mm | 4.72-4.98"

must be used with
EAA0277D59A large spacer disc
and/or **EAC0058D68A** spacer ring

8100068

BASIC LIGHT TRUCK CONE KIT



ERM0050J23A
LIGHT TRUCK CONE

» 107.19-174mm | 4.25"-6.85"

EAA0277D59A
LARGE SPACER DISK

EAC0058D68A
SPACER RING

QUICK NUT PRESSURE CUPS



EAC0058D07A
PRESSURE CUP
» For use w/Quick Nut (standard)
EAA0263G66A

EAC0058D15A
PROTECTIVE RING
» For use w/Quick Nut (standard)
EAA0263G66A

8-02040R2
PRESSURE CUP
For use w/Quick Nut (HD)
140-405-012

001 1041 0000
PROTECTIVE RING
For use w/Quick Nut (HD)
140-405-012

EAA0307G82A
CLAMPING PLATE
For use w/Quick Nut (HD)
140-405-412

QUICK NUT (STANDARD)



EAA0263G66A
QUICK NUT HANDLE (STANDARD)
» 40mm shaft

For use w/passenger cars only

EAC0058D08A
PRESSURE RING
» For use w/Quick Nut (standard)
EAA0263G66A

ST0027008
REPLACEMENT HANDLE
» For use w/Quick Nut (standard)
EAA0263G66A

124-405-006

QUICK NUT (HD) KIT



140-405-012
QUICK NUT HANDLE (HD)
» 40mm shaft

For use w/passenger cars and Heavy-Duty truck wheels

8-02040R2
PRESSURE CUP
8-02040R1
PRESSURE RING

001 1041 0000
PROTECTIVE RING

140E-405-310

QUICK NUT (HD) REPAIR KIT



140E-405-310
QUICK NUT (HD) REPAIR KIT

For use w/Quick Nut (HD)
140-405-012

» Cover
» Torsion Spring

» Control Disk
» Threaded Jaw

» Screws
» Dowels

ADDITIONAL ACCESSORIES

**EAK0306G66A
UNIVERSAL WHEEL LIFT**

For use w/passenger cars only

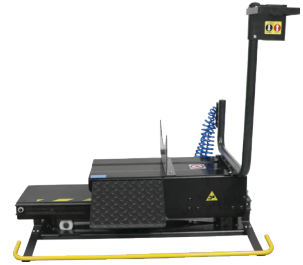
- » Pneumatic actuator
- » Foot-pedal control
- » Max weight: 153 lbs.
- » Max lift: 20"
- » WxDxH: 49x25x38"



**8-03191A
BW2015 WHEEL LIFT**

- For use w/L-cabinet balancers
- » Compatible with: geodyna 9000P, 8200P, 7800P, 6300
 - » Pneumatic actuator
 - » Hand-operated
 - » Max weight: 153 lbs.
 - » WxDxH: 37x24x36"

Max wheel diameter drops to 36" due to lift platform height



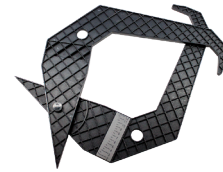
**EAK0309J67A
STORAGE STAND**

- » Mobile storage stand for wheel balancing accessories



**EAA0247G21A
RIM WIDTH CALIPER**

- » Manual measurement tool



**000 5883 9000
WEIGHT PLIERS**

- » Wheel weight remover
- » Hammer tool



**EAK0341G70A
RETROFIT KIT FOR PINS**

- » 18 bolts
- » 18 nuts



**EAM0005D40A
SELF-CALIBRATION WEIGHT**



EAA0260D80A



EAA0260D80A
BASIC ADAPTER
EAA0227D29A
14MM ADAPTER SHAFT
EAM0005D62A
GAUGE EXTENSION
EAM0005D82A
CENTERING CONE (2 PCS)
EAM0005D76A
BMW CONE (2 PCS)

MOTORCYCLE ADAPTER KIT

8-01550A
ARBOR WRENCH
EAM0005D79A
KNURLED NUT M14
EAM0005D63A
FASTENING NUT M6 (4 PCS)
1-01805A
ALLEN SCREWS (2 PCS)

EAM0005D83A
BUSHING
 » 25x14x40mm
EAM0005D80A
BMW BUSHING
 » 15x17x25mm

EAM0005D77A
BUSHING
 » 20x14x40mm
EAM0005D78A
BUSHING
 » 17x14x40mm

EAA0277D03A



EAA0277D03A
10MM SHAFT ADAPTER
 » Shaft Length: 205mm
 » For use with EAA0260D80A

10MM SHAFT ADAPTER

EAA0277D29A



EAA0277D29A
EXTENDED SHAFT ADAPTER
 » Shaft Length: 284.5mm
 » Shaft Diameter: 14mm
 » For use with EAA0260D80A

EXTENDED SHAFT ADAPTER

EAA0277D22A



EAA0277D22A
3/4" HARLEY DAVIDSON SHAFT ADAPTER
 » 3/4" Harley Davidson shaft adapter w/1" bushing
 » Shaft Length: 210mm
 » For use with EAA0260D80A

3/4" HARLEY DAVIDSON SHAFT ADAPTER

2005540



2005540
HARLEY DAVIDSON SHAFT ADAPTER
 » Bushing Diameter: 25mm
 » Shaft Length: 404mm
 » Shaft Diameter: 19mm
 » For use with EAA0260D80A

HARLEY DAVIDSON SHAFT ADAPTER

SUZUKI, NTV & MOTO GUZZI V11

EAA0277D07A

EAA0277D07A

CONE SET

- » For use with 14mm shaft
- » For use with EAA0260D80A



APRILLA REAR MONO-LEVER

EAA0277D11A

EAA0277D11A

MONO-LEVER

- » For use with EAA0260D80A



BMW MONO-LEVER

EAA026016A

EAA026016A

MONO-LEVER

- » For use with EAA0260D80A



HONDA OR YAMAHA MONO-LEVER

EAA0277D09A

EAA0277D09A

MONO-LEVER

- » For use with EAA0260D80A



DUCATI OR TRIUMPH MONO-LEVER ADAPTER

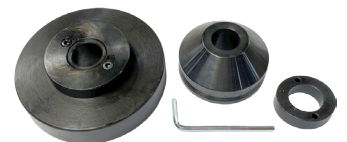
EAA0277D20A

EAA0277D20A

DUCATI/TRIUMPH MONO-LEVER ADAPTER

- » For use with EAA0260D80A

Must use with 3/4" shaft adapter EAA0277D22A



EAA0346J58A

HEAVY-DUTY WHEEL LIFT



EAA0346J58A HEAVY-DUTY WHEEL LIFT

For heavy-duty balancers only

- » Pneumatic actuator
- » Hand-operated control

- » Max weight 551 lbs.
- » Max lift 18"

» WxDxH: 41x 23x 21"

EAA0307G80A

CENTERING ARMS



EAA0307G80A PROFESSIONAL 4-STAR CENTERING ARM

- » Fits 4x 275/285mm

PROFESSIONAL 5-STAR CENTERING ARM

- » Fits 10x 335mm
- » 10x 285.75mm
- » 10x 225.25mm

REPLACEMENT TRUCK STUDS



1921003 REPLACEMENT TRUCK STUD

- » Fits professional 4 & 5-star centering arms
- » Includes knurled nut
- » Length: 55mm
- » Diameter: 17-33.5mm

00112105000 REPLACEMENT TRUCK STUD

- » Fits professional 4 & 5-star centering arms
- » Includes knurled
- » Length: 58mm
- » Diameter: 17-38mm

00112106000

REPLACEMENT KNURLED NUT



00112106000 REPLACEMENT KNURLED NUT

- » Fits truck stud 1921003
- » Fits truck stud 00112105000

EAK0237J23A

SPARE PIN AND NUT



EAK0237J23A SPARE PIN AND NUT

- » 700-008-034 pin
- » Wide conical head
- » Head Diameter: 40mm
- » Length: 33.5mm

140 404 119

WING NUT



140 404 119 WING NUT

- » For units assembled after 10/2021

PASSENGER CAR SPACER**190 988 004**

190 988 004
PASSENGER CAR SPACER
» For units assembled after
10/2021

**ADDITIONAL HEAVY-DUTY ACCESSORIES**

ERM0050J24R
CENTERING CONE
» For truck wheels



00112292000
CENTERING DISK
» For truck wheels



ERA0260032R
HEAVY-DUTY SPACER
» For truck wheels



8-00391A
RIM WIDTH CALIPER
» For truck wheels





hofmann-equipment.com