

Installation And Service Manual

SCISSORS LIFT

Model: AX-16A

Cargo Claims

If there is any missing or damaged product during transportation, the buyer must not sign on the shipping paperwork or refuse the shipment. NOTATE ALL DAMAGE OR REFUSE DAMAGED SHIPMENT!


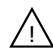

DANGER

Read the entire contents of this manual before using this product. Failure to follow instructions and safety precautions could result in serious injury or even death. Make sure all other operators also read this manual. Keep this manual near the machine so that it can be seen by all users. By proceeding with installation and operation, you agree that you are fully understand the contents of this manual and take full responsibility for the use of the product.

CONTENTS

PROFILE	1
IMPORTANT SAFETY INSTRUCTIONS	3
I. PRODUCT FEATURES AND SPECIFICATIONS	5
II. INSTALLATION REQUIREMENT	6
III. INSTALLATION STEPS	7
IV. EXPLODED VIEW	23
V. TEST RUN	30
VI. OPERATION INSTRUCTIONS	31
VII. MAINTENANCE SCHEDULE	32
VIII. TROUBLE SHOOTING	34
IX. CAR LIFT SAFETY TIPS	35
X. LIFT DISPOSAL	35

Explanation of the safety warning symbols used in this manual

-  DANGER Risk of death or injury
-  WARNING Dangerous or unsafe practices that may result in death or injury
-  CAUTION Dangerous or unsafe practices that may result in personal injury, product damage or property damage
- ATTENTION Conditions that may result in damage to products or property

PROFILE

This instruction manual is specially prepared for you. Your new lift is the product of over a decade of continuous research, testing and development and is the most technologically advanced lift on the market today.

Please make sure to read through this manual before operating the lift.

Record the information on the nameplate label here:

Model No.: _____

Serial No.: _____

Manufacturer date: _____

WARRANTY

The warranty period for the steel structure part of new car lift is 5 years, hydraulic components, bronze bushings, sliders and plastic parts are under warranty for 3 years, and electrical components and sync cable, lock release cable warranty for 2 year.

Rubber pads are without warranty. During the warranty period, the manufacturer will repair or replace the defective parts free of charge including shipping costs.

This warranty does not cover damage caused by normal wear and tear, improper use, damage in transit, or damage caused by lack of maintenance.

This warranty is unique and supersedes what is expressed and implied in all other warranties. The manufacturer shall not be liable for any particular, indirect or accidental damage resulting in breach of or delay in the execution of the warranty. The manufacturer reserves the right to design and improve the product and has no obligation to make notice of the changes in advance.

The product warranty based on the above clause is based on the model number and serial number of the equipment. This information must be provided in conjunction with all warranty information at the time of service and warranty.

SAFETY WARNING LABEL

⚠ WARNING ⚠

	
Please read the user manual before operation.	Please lock the safety device before repairing the vehicle.
	
Always wear protective shoes and mind your feet during lowering.	Please keep hands and feet away from "X" or connection points during operation.
	
Do not rock or shake raised vehicles	Unbalance lifting of vehicle is strictly forbidden.
	
The vehicle should be parallel with lift platforms.	Please run away quickly from any falling objects.

PLEASE READ THE PRECAUTIONS CAREFULLY

No.71030134


IMPORTANT SAFETY INSTRUCTIONS

In order to properly maintain your product and ensure operator safety, it is the responsibility of the product owner to read and follow these instructions!

1. Ensure product installation complies with all applicable local regulations and rules, such as Occupational Safety and Health Administration regulations and electrical codes.
2. Ensure that all operators are properly trained, know how to operate the unit safely, and are properly supervised.
3. Do not operate the lift until you are sure all parts are in place and operating correctly.
4. Keep your hands and feet away from the machine. Keep hands and feet away from any moving parts. Keep your feet away from the lift as it descends to avoid pressing on pointed objects.
5. Keep the work area clean. A cluttered workspace can lead to injuries.
6. The machine is only approved for indoor installation and use. Outdoor installation is prohibited.
7. Only trained operators are allowed to handle the lift machine. All untrained persons must stay away from the workplace. Never allow untrained persons to handle or operate the machine.
8. Use the lift properly. Use the lift in the correct way.
9. Warning! Keep persons and objects from the lift when lifting the a vehicle.
10. If the vehicle is at risk of falling, make sure no one is around the lift.
11. Before preparing to approach or service the vehicle, ensure that the safety device is in effect.
12. Dress appropriately when operating machines, and consider wearing non-slip steel-toe shoes for added safety..
13. Beware of electric shock. In order to protect the operator from electric shock, the lift in use must be grounded. Do not connect the green wire to the terminal. This is the ground wire.
14. Danger! The power supply used in this type of lift has high voltage. Please disconnect the power supply before any circuit repair. Unplug in case the power supply is accidentally switched on during maintenance.
15. Warning! There is a risk of explosion. There are parts in the equipment that produce arc light and spark. Do not operate near flammable gas. This machine should not be placed in the lounge or basement.
16. Maintain with care. Keep the machine clean for better and safer operation. Perform

proper lubrication and maintenance procedures according to the manual. Keep handles or buttons clean, dry, and free of oil.

17. Stay alert. Use common sense to observe what you are doing and stay alert.
18. Check for damaged parts. Check for adjustments to moving parts, damage to parts, or anything that may affect their operation. Do not use the machine if the parts are damaged.
19. Do not remove relevant safety parts from the machine. Do not use a lift if it is damaged or missing.
20. Only operate the lift at temperature between 5°C to 40°C(41°F to 104°F).

 **DANGER** Be very careful when installing, operating, maintaining or repairing this equipment. Failure to comply may result in property damage, product damage, injury or (in very rare cases) death. Ensure that only authorized personnel operate the equipment. All repairs must be carried out by an authorized technician. Do not modify the machine, this voids the warranty and increases the probability of personal injury or property damage. Ensure to read and follow this instructions on the label.

I. PRODUCT FEATURES AND SPECIFICATIONS (See Fig.2)

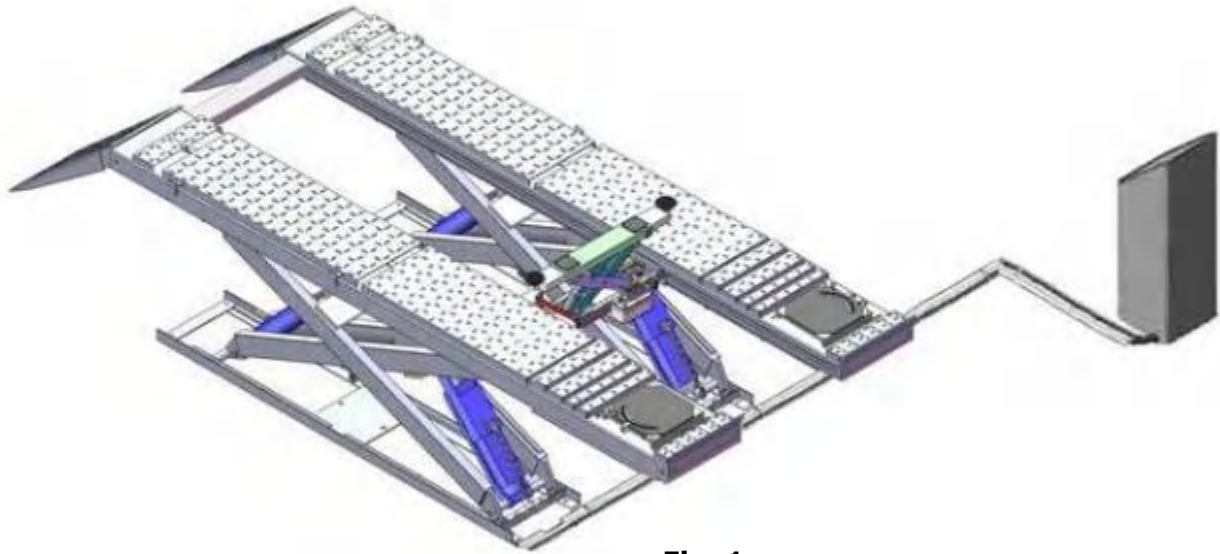


Fig .1

FEATURES OF MODEL AX-16A

- Electronic control operating system, easy to use.
- Dual teeth self-locking mechanism, pneumatic release, safe and reliable.
- 2 groups of dual cylinders are applied to assure the platforms synchronous.
- Super wide non-skid diamond platforms.
- Strengthened structure, is capable to service various vehicles from passenger cars to minibuses.
- Optional jack (with pneumatic pump)
- Optional turnplate

MODEL AX-16A SPECIFICATIONS

Model	Lifting Capacity	Lifting Time	Max Lifting Height	Max Locking Height	Overall Length	Overall Width	Min. Height	Runway Width	Distance Between Runway	Motor
AX-16A	16000lbs	110S	72 7/8"	71 1/16"	274 1/8"	94 1/8"	13"	24 5/8"	44 7/8"	2.0HP

⚠ CAUTION When driving the vehicle, stay in the middle between the platforms. If you hit any part of the lift, you could damage the car or lift.

II. INSTALLATION REQUIREMENT

A. TOOLS REQUIRED

- ✓ Rotary Hammer Drill
(Φ19、Φ10、Φ4)



- ✓ Hammer



- ✓ Level Bar



- ✓ Adjustable Spanner (12")



- ✓ Wrench set (8# 14# 15#
17#、19#)



- ✓ Grease gun



- ✓ Carpenter's Chalk



- ✓ Screw Sets



- ✓ Tape Measure (7.5m)



- ✓ Pliers



- ✓ Lock Wrench



- ✓ Ratchet Spanner with Socket



Fig. 2

B. Equipment storage and installation requirements.

The equipment should be stored or installed in a shady, normal temperature, ventilated and dry place.

C. SPECIFICATIONS OF CONCRETE

Specifications of concrete must be adhered to the specifications as following.

Failure to do so may result in lift and/or vehicle falling.

1. Concrete must be thickness 4" and without reinforcing steel bars, and must be dried completely before the installation.
2. Concrete must be in good condition and must be of test strength 3,000psi minimum.
3. Floors must be level and no cracks. The two pits should be at the same level for flush mount installation.

D. POWER SUPPLY

1. You are required to use a licensed and qualified electrician for the installation process.
2. The power supply capacity must be more than 3.0HP minimum, with a cord larger than 12AWG, and must be properly grounded.

III. INSTALLATION STEPS

A. Location of installation

Check and ensure the installation location (concrete, layout, space size etc.) is suitable for lift installation. Install according to Fig. 3 or Fig. 5 for on surface installation of flush mount installation.

1. On surface installation
 - 1.1 On surface installation foundation

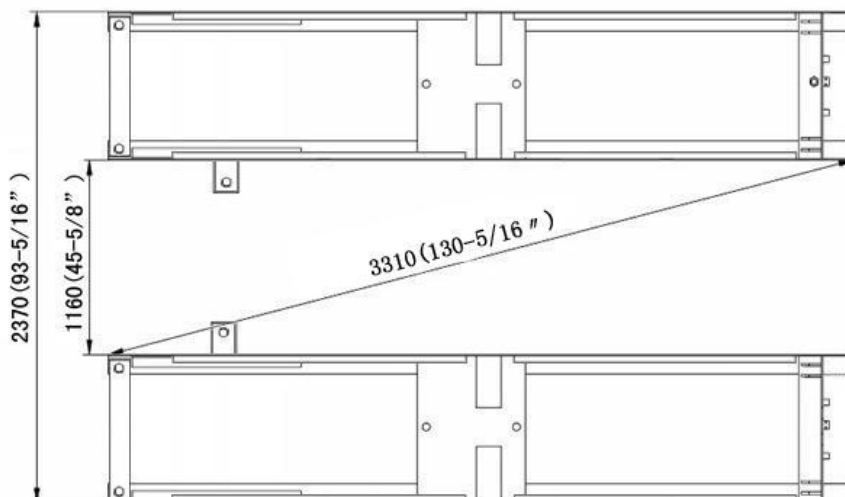


Fig. 3

1.2 Illustration for on surface installation.

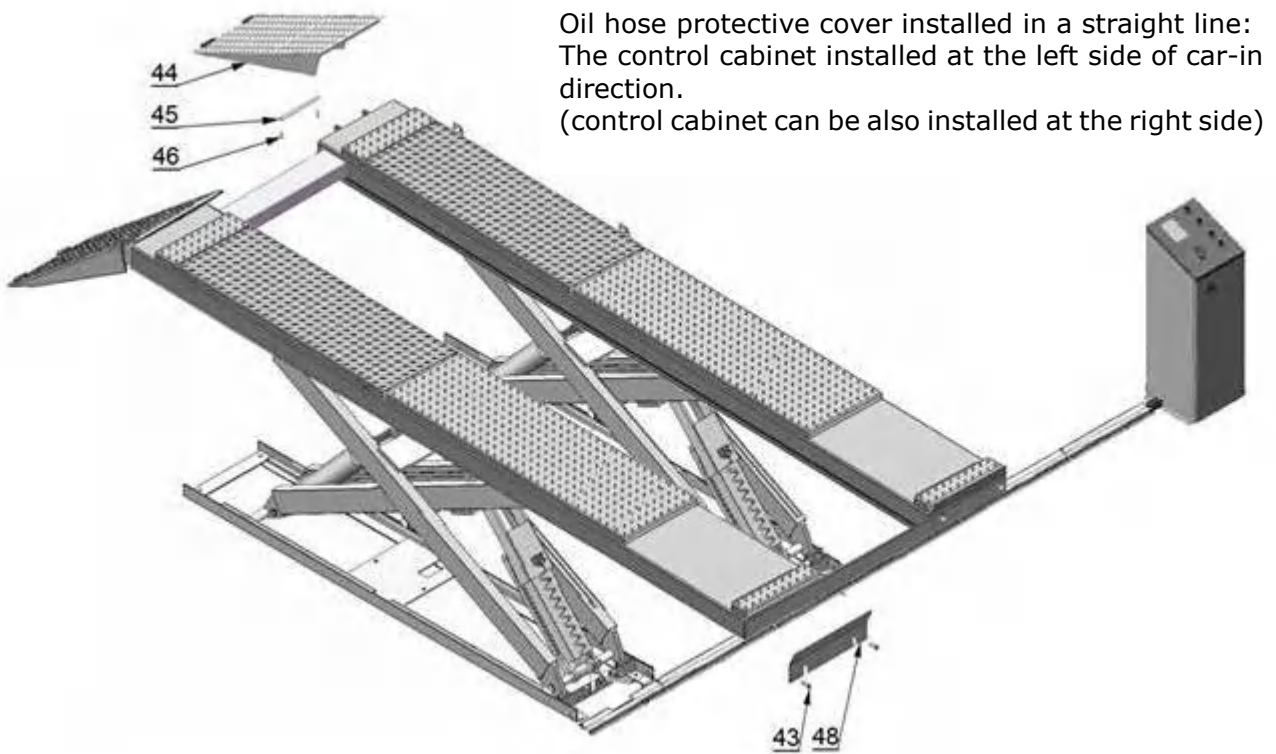
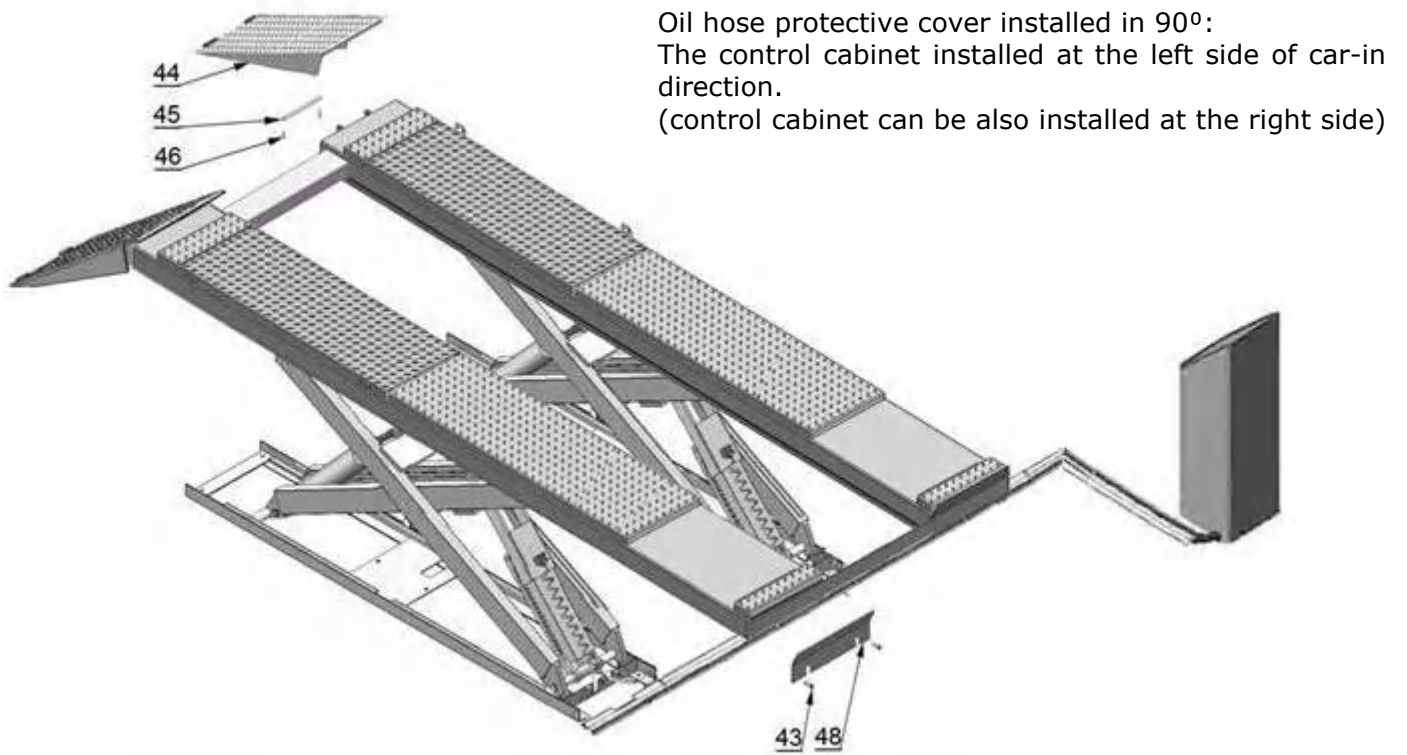
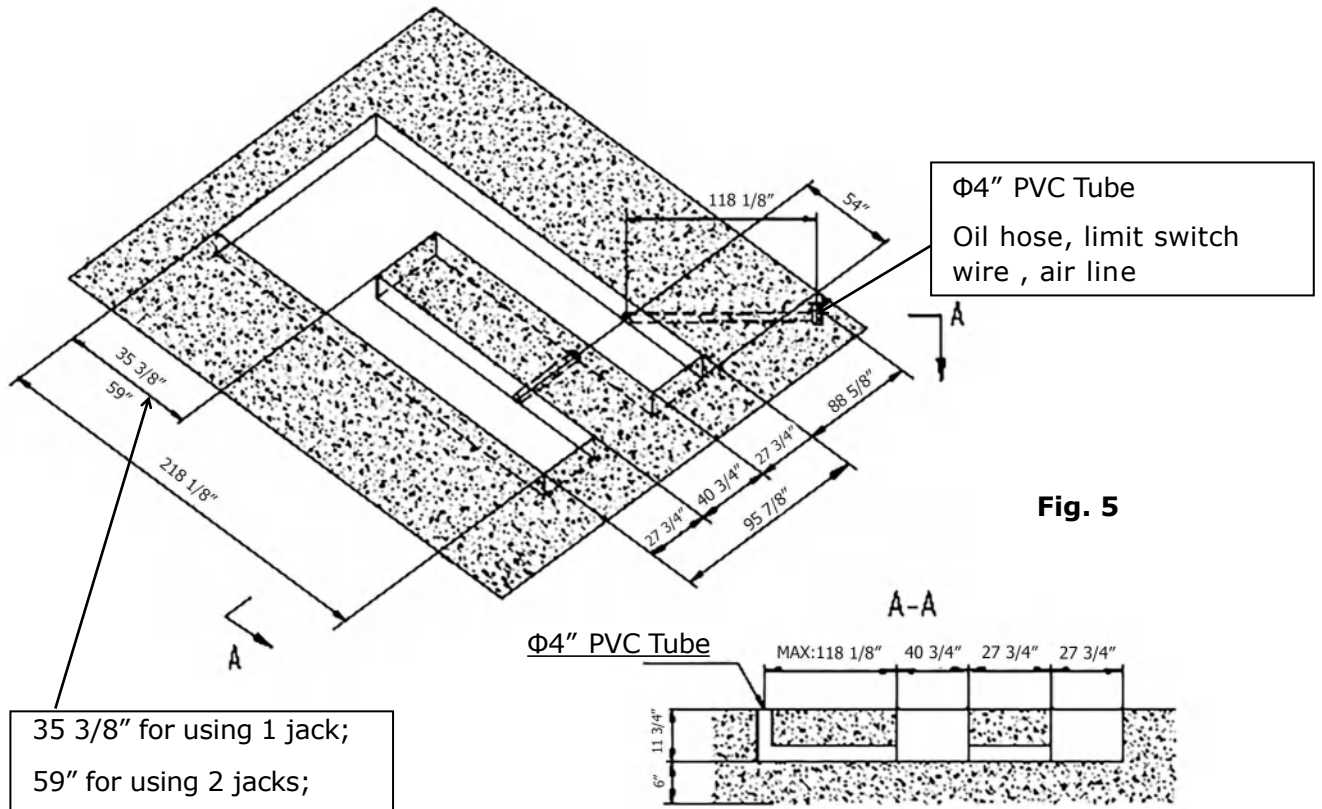


Fig. 4

2. Flush mount installation.

2.1 Flush mount installation foundation (Fig.5) .



2.2 Illustration for flush mount installation (Fig.6) .

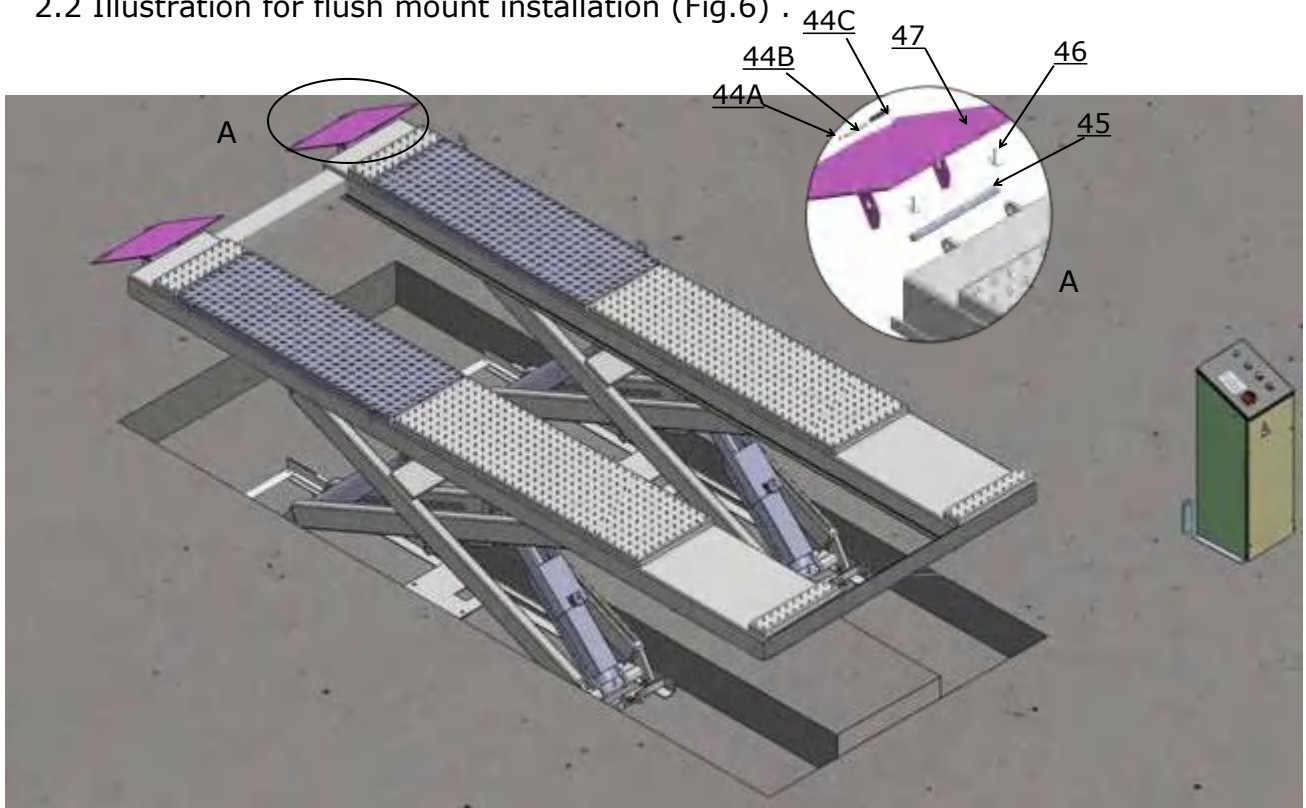


Fig. 6

B. Check the parts before assembly, make sure all the parts are well received.

1. Whole set of one unit (Packaged lift, parts box, control cabinet, drive-in ramps)
(See Fig.7)



Fig. 7

2. Take off the packing shelf, move all parts to installation site, open the packing and checked the parts according to the shipment parts list.

2.1, Parts for on surface installation (see Fig. 8)

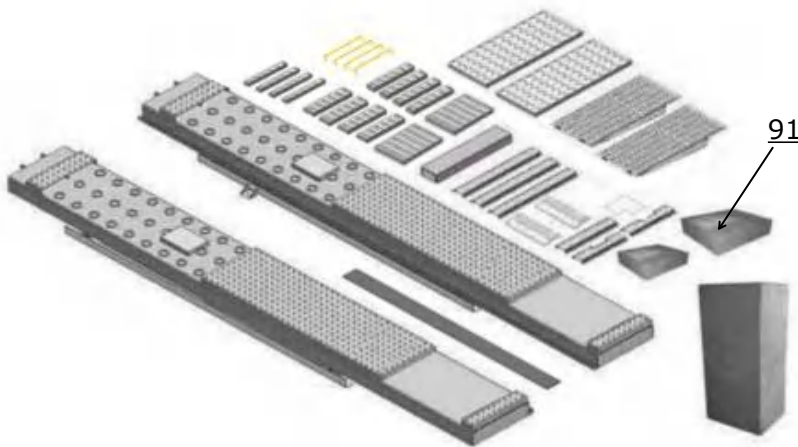


Fig. 8

2.2, Parts for flush mount installation (see Fig. 9)

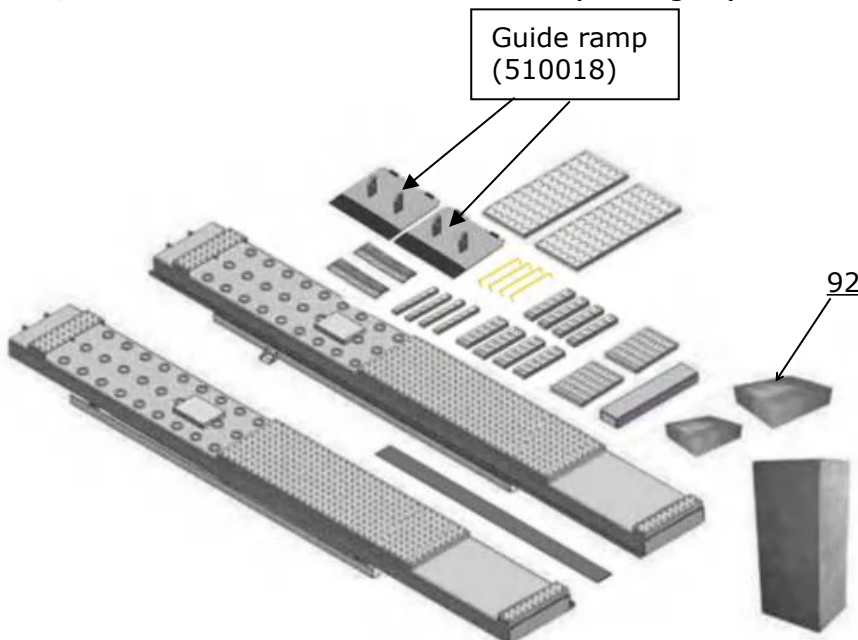


Fig. 9

3. Open the parts box, check the parts according to the part list. (See Fig. 10)



Fig.10

4. Check the parts of the parts bag according to the parts bag list.

4.1 Parts bag for on surface installation, see Fig 11

Fig.11



4.2 Parts bag for flush mount installation, see Fig 12

Fig.12



C. Place the lift and connect oil hose and air line system.

1. Place the lift to installation site as Step A. See fig 13

Note: the control cabinet can be installed at the left side or right side of the lift according to the installation site.



Fig.13

2. Connect oil hoses and air lines.

2.1 Connection diagram for control cabinet installed at the left side.see Fig.14

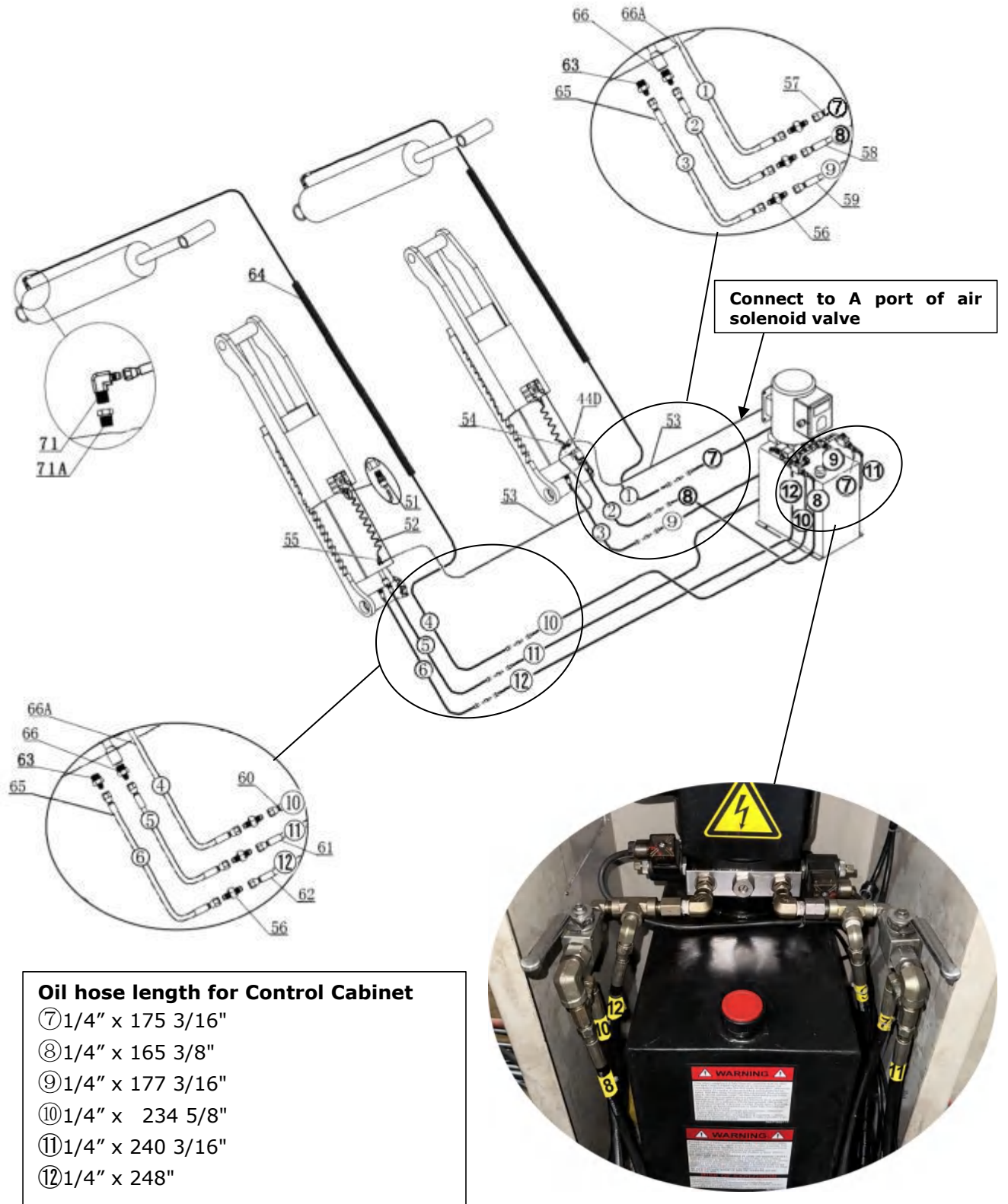


Fig.14

2.2 Connection diagram for control cabinet installed at the right side.see Fig.15

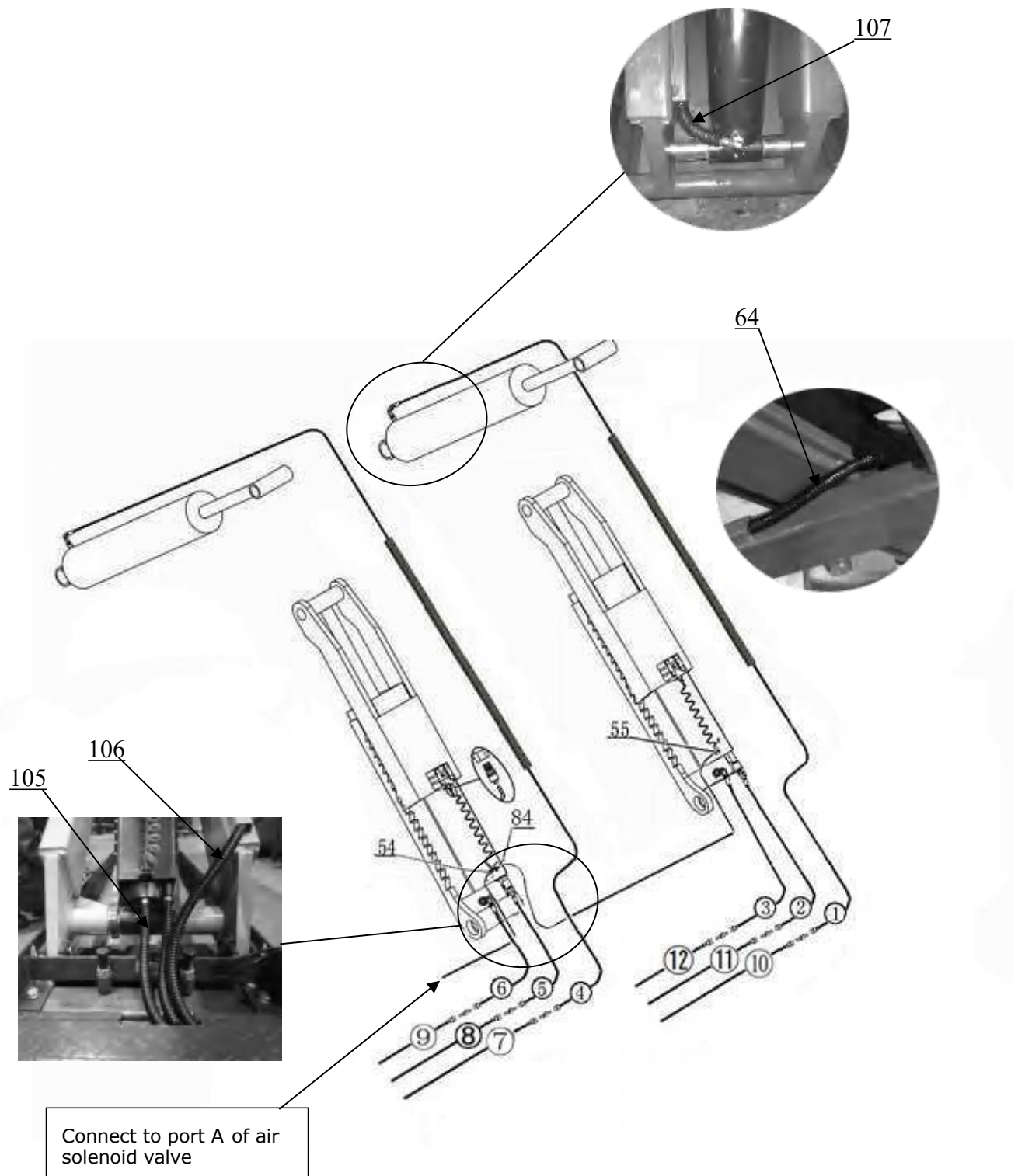


Fig.15

D. Install electric system

1. Wire connection for single phase power unit

1.1 Connect the wire of power source and limit switch according to the wiring diagram (See Fig. 16)

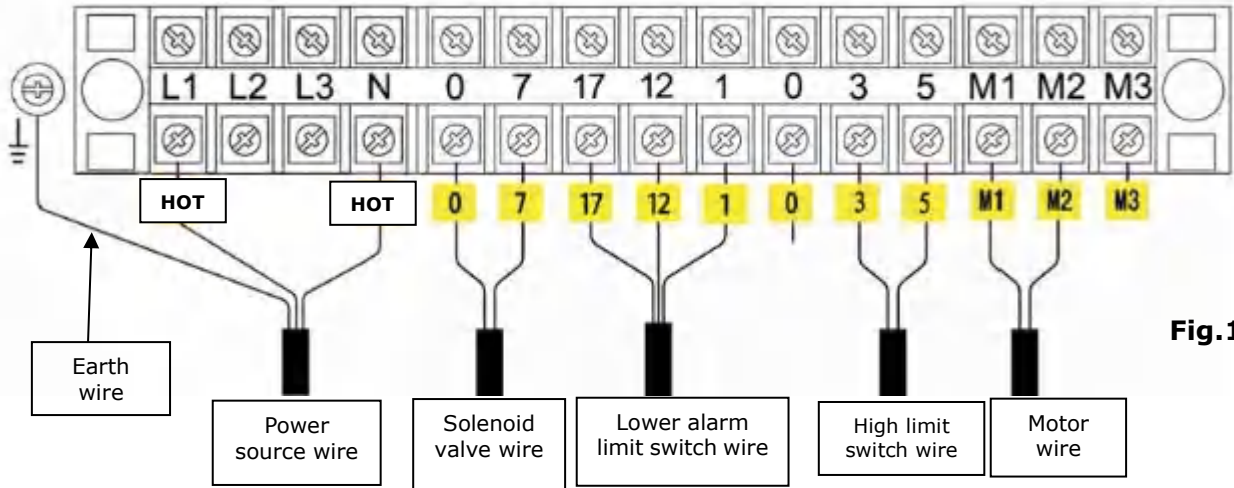


Fig.16

1.2 Single phase power unit circuit diagram (See Fig. 17)

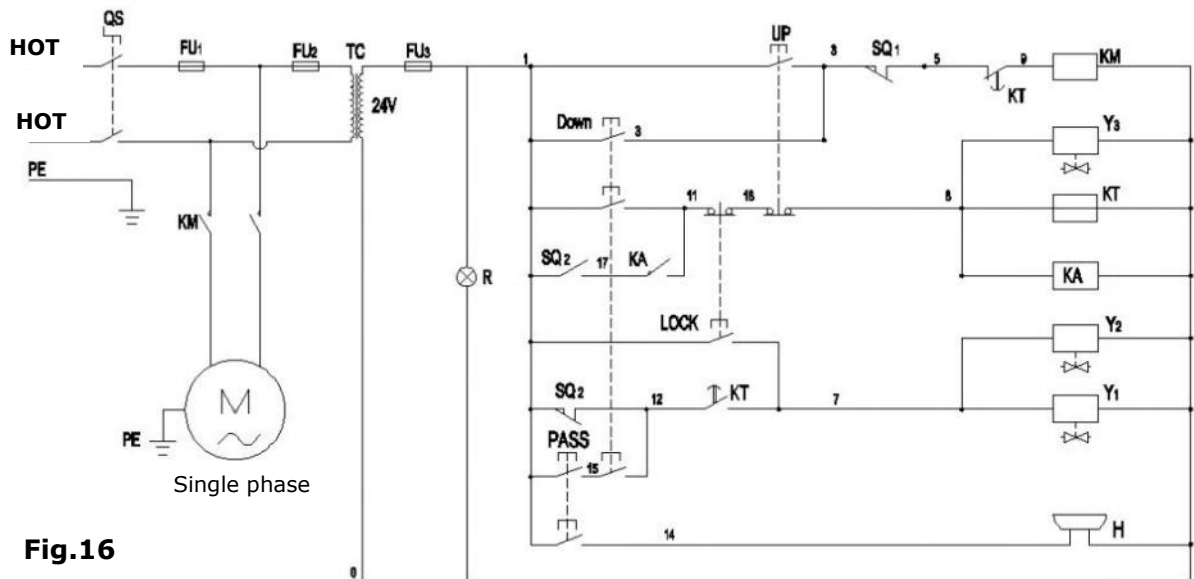


Fig.16

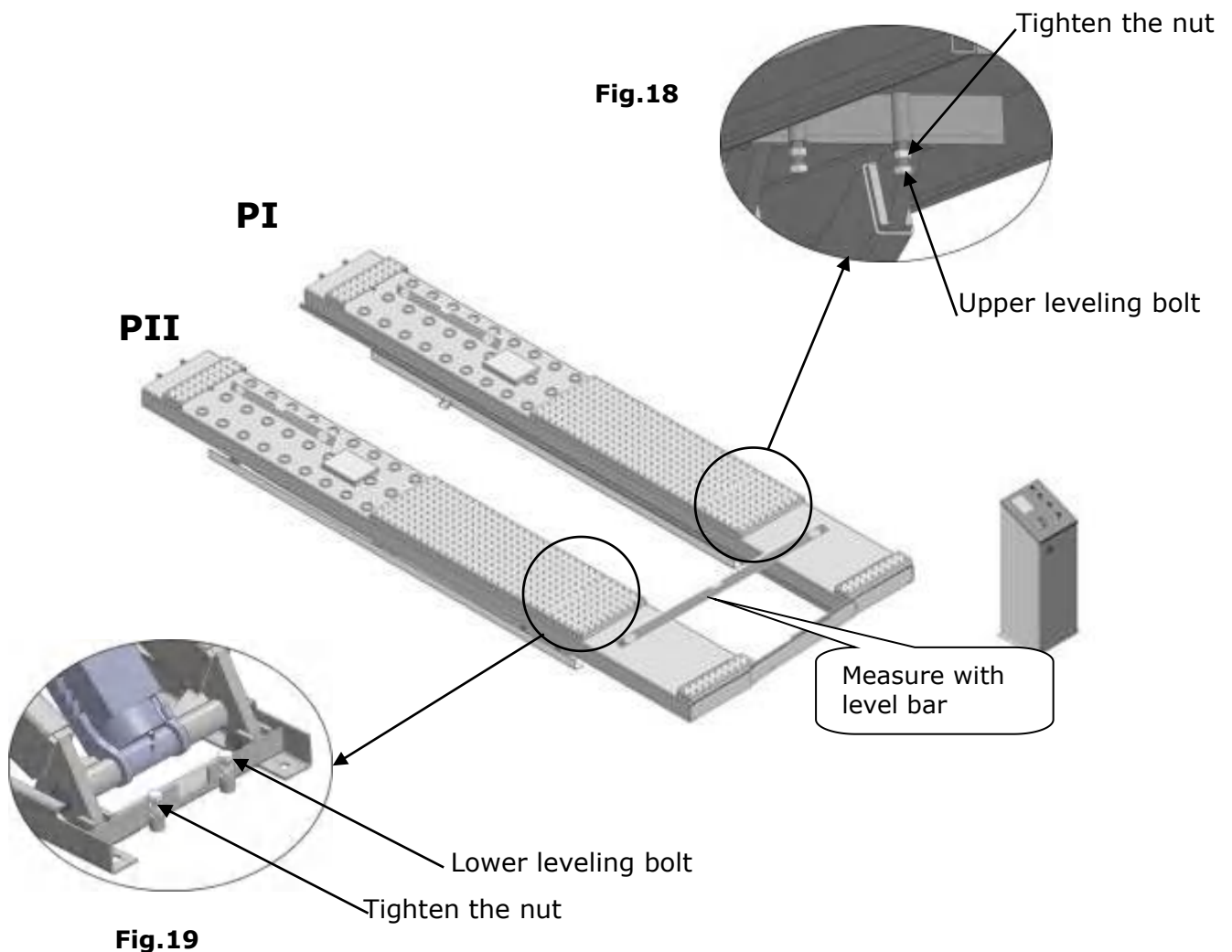
Electric Component of single phase

Item	Name	Code	Specification
1	Power switch	QS	220V AC
2	Breaker	FU ₁	2P
3	Breaker	FU ₂	1P
4	Breaker	FU ₃	1P
5	AC Contactor	KM	24V AC
6	Time relay	KT	24V AC
7	High limit switch	SQ1	10A

Item	Name	Code	Specification
8	Lower alarm limit switch	SQ2	10A
9	Hydraulic solenoid valve	Y1 Y2	24V AC
10	Air solenoid valve	Y3	24V AC
11	Push button	UP	Duplex
12	Push button	Lock	Duplex
13	Push button	Down	Triple
14	Lower alarm button	Pass	Duplex
16	Buzzer	H	24V AC
17	Transformer	TC	24V AC
18	Intermediate Relay	KA	24V AC
19	Power indicator	R	24V AC

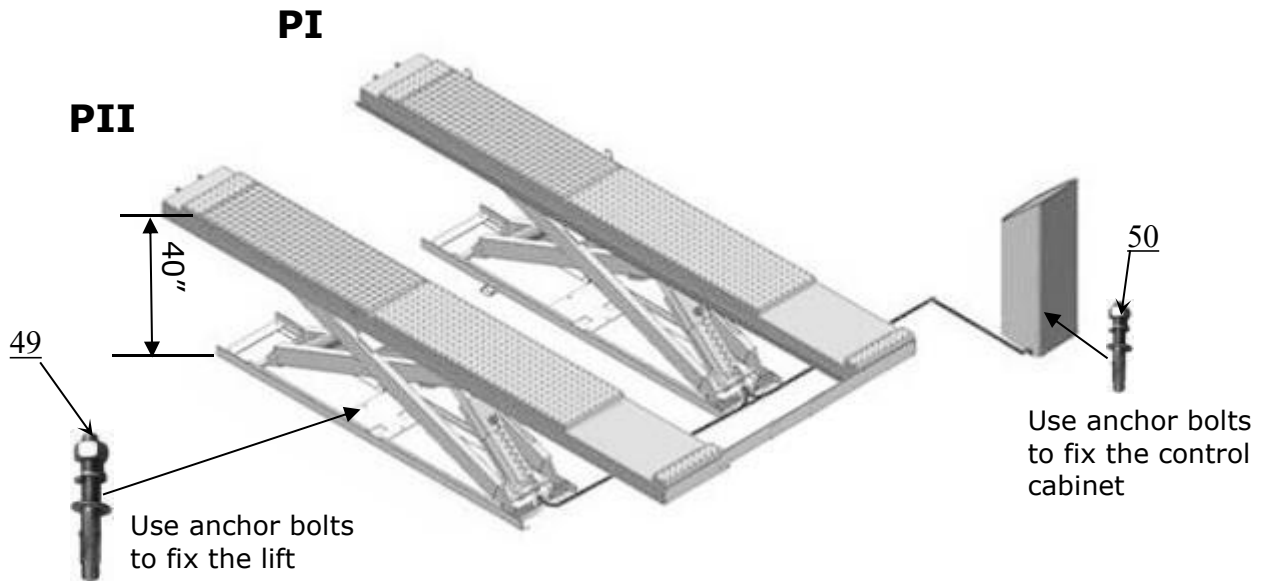
E. Platforms leveling adjustment and install anchor bolts.

1. Measure with level bar, adjust lower leveling bolt (see Fig 18) and use shims to level the platforms until the platforms are leveled front and rear. Then adjust the upper leveling bolt (see Fig 19), making it just in contact with the lower leveling bolt when the platforms are lowered to the lowest. Tighten the nuts.



2. Install anchor bolts.

2.1 Raise the lift to 40" height. (See Fig.20).



2.2 Drill the holes for the anchor bolt with the rotary hammer drill, type the anchor bolt into the ground, use shims to level the bolts and then fasten with ratchet spanner. See fig 21.

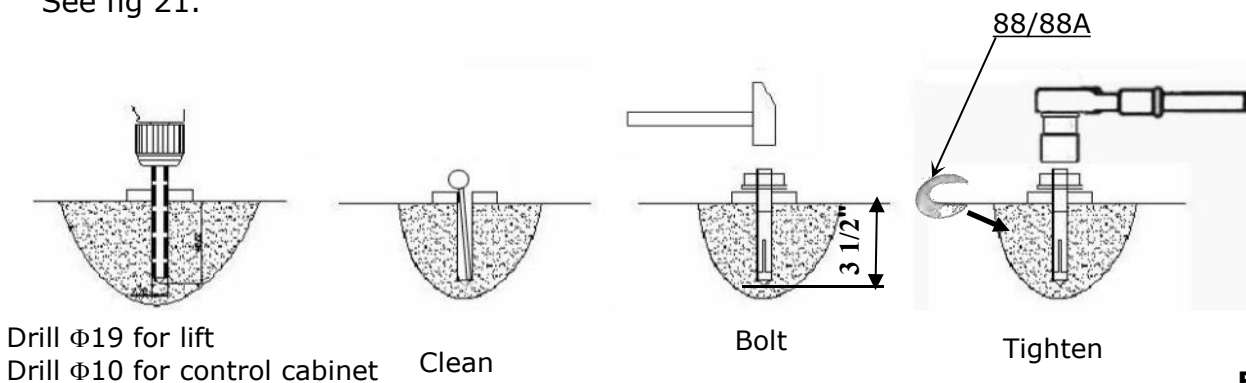


Fig.21

Note: The tightening torque for the anchor bolt is 1328lbf.in, anchor bolts driven into the ground at least 3 1/2".

CAUTION Concrete and anchor bolts must comply with above specifications. Install lifts only on concrete surfaces. If you are in asphalt or either any other surface on which the lift is mounted, or the concrete or anchor bolts do not meet these specifications, it may result in product damage, vehicle damage, personal injury, or even loss of life.

F. Install platform connecting bar, limit rod. See Fig 22.

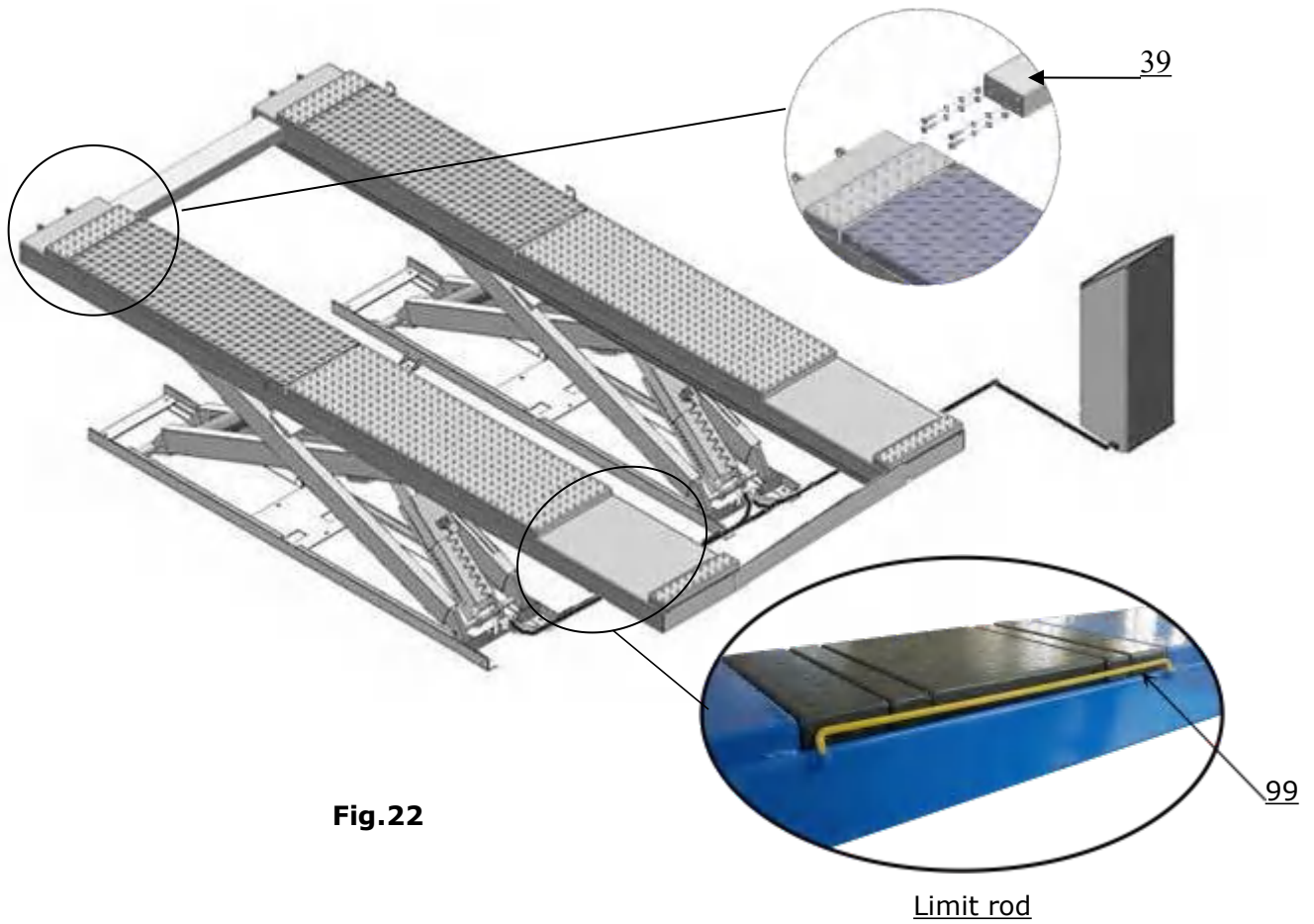


Fig.22

G. Install oil hose protective cover (only for on surface installation)

1. Arrange the oil hoses and air lines neatly, and cover with protective cover.
See Fig. 23.

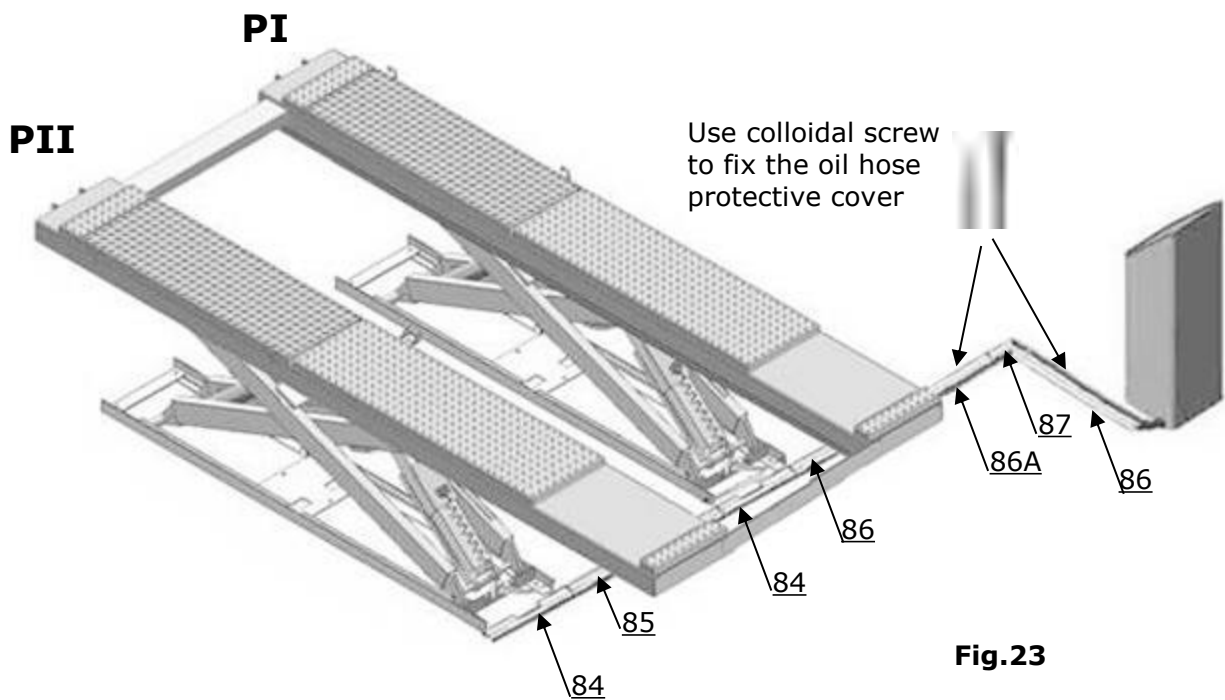


Fig.23

2. Install protective cover bolts. See fig 33.

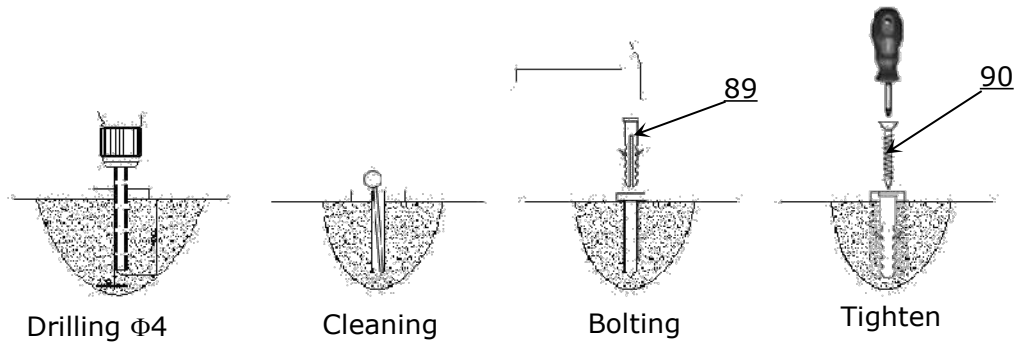


Fig.24

H. Installation of optional Air line kits (see fig. 25)

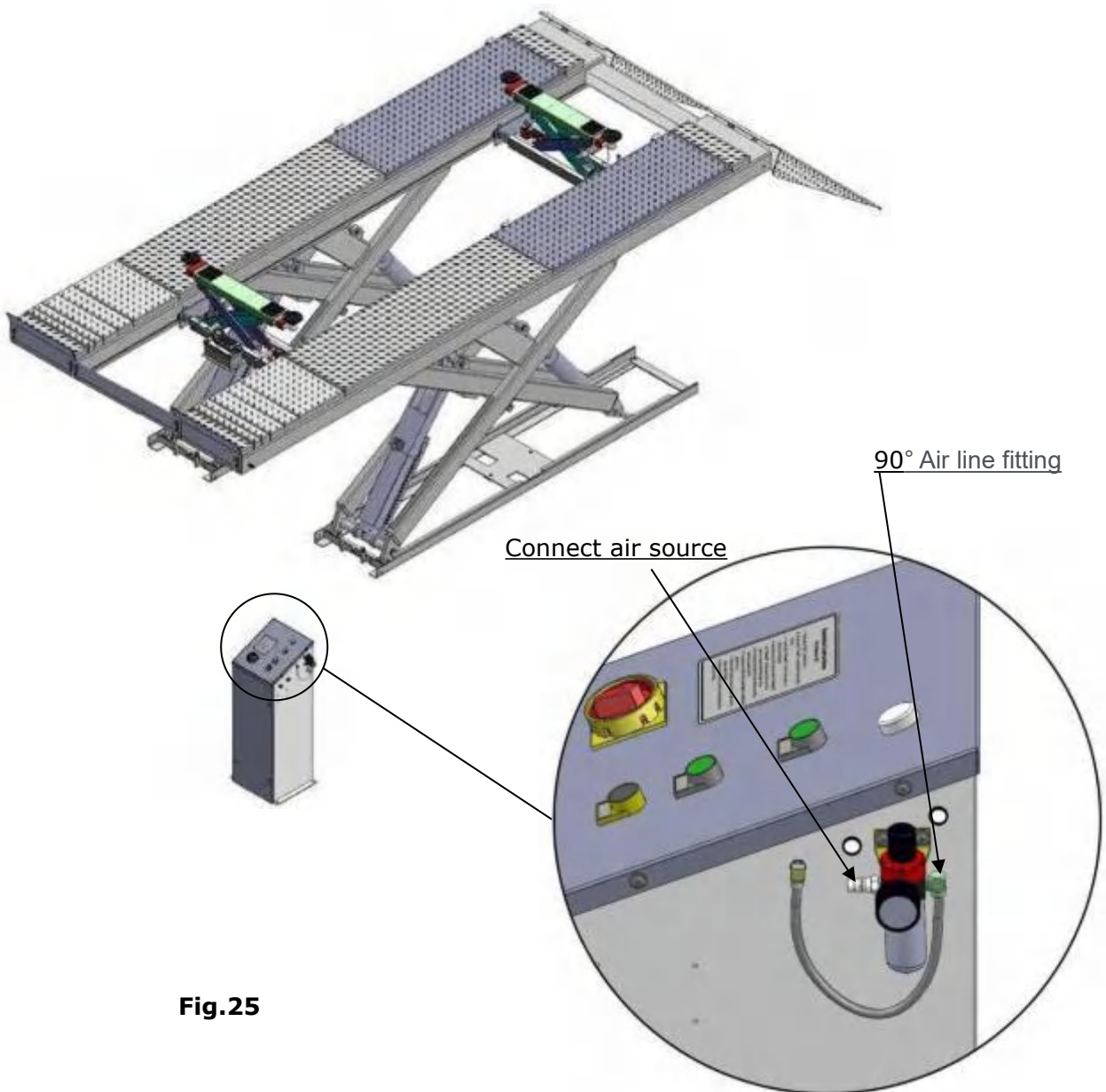


Fig.25

1. Install air line kit

- 1.1 Connect the air line fittings with $\phi 8 * \phi 6$ black air line shown as following.
The length of air line can be cut accordingly by the user.

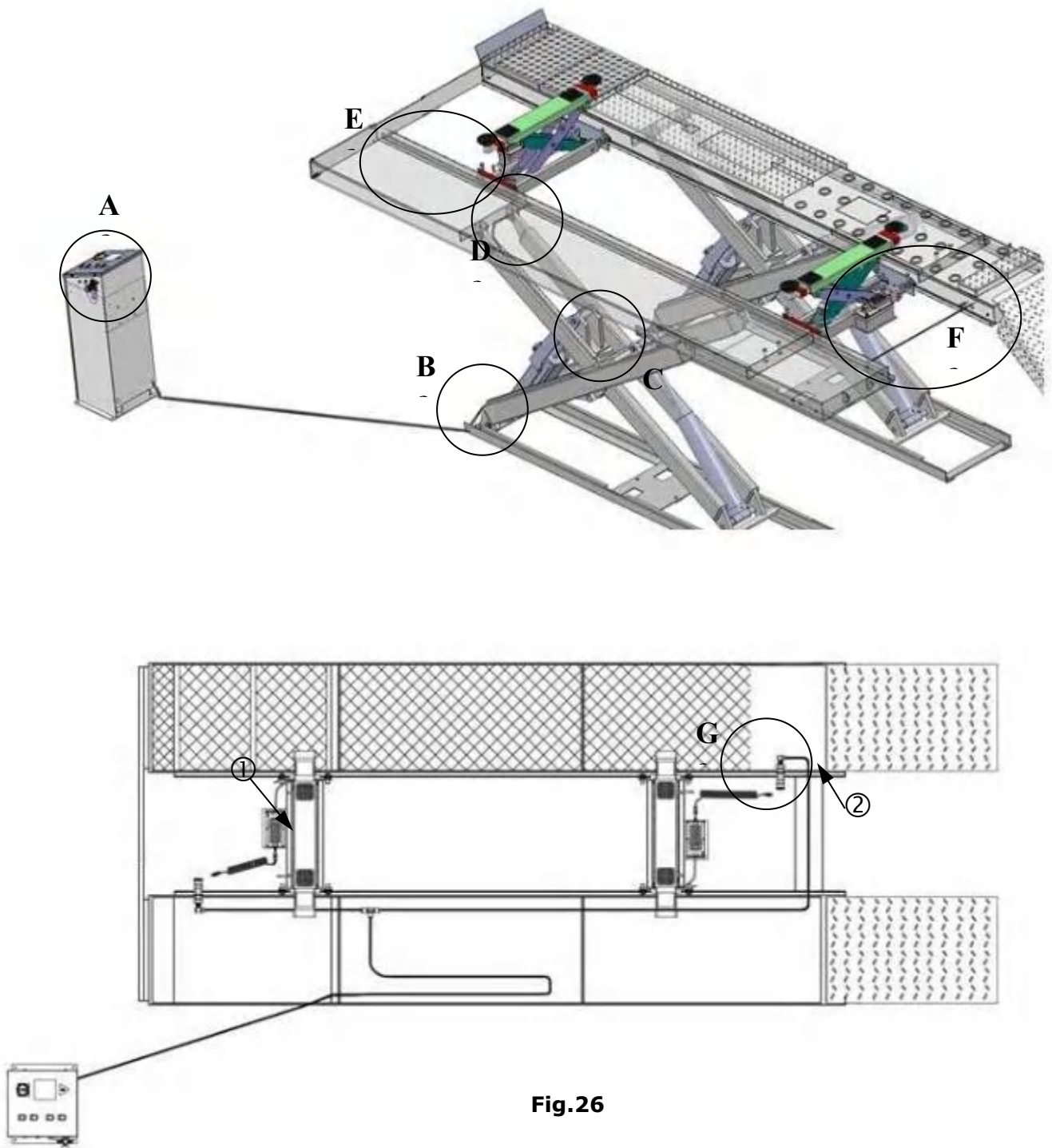
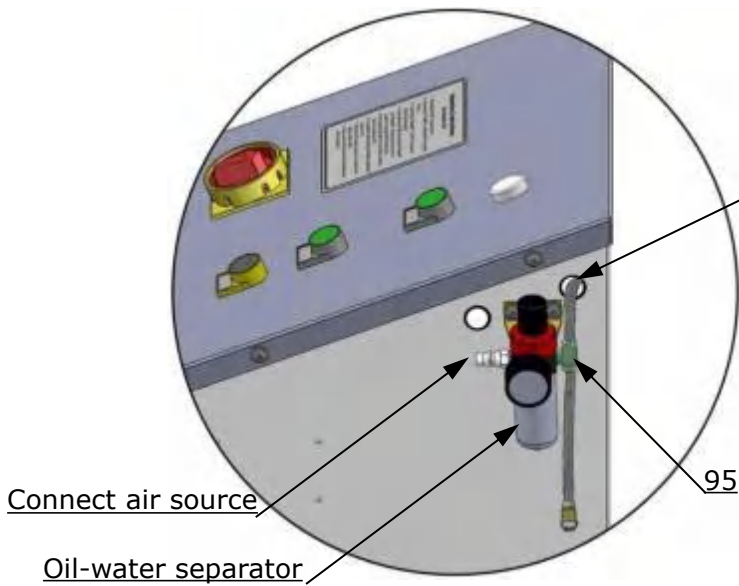


Fig.26



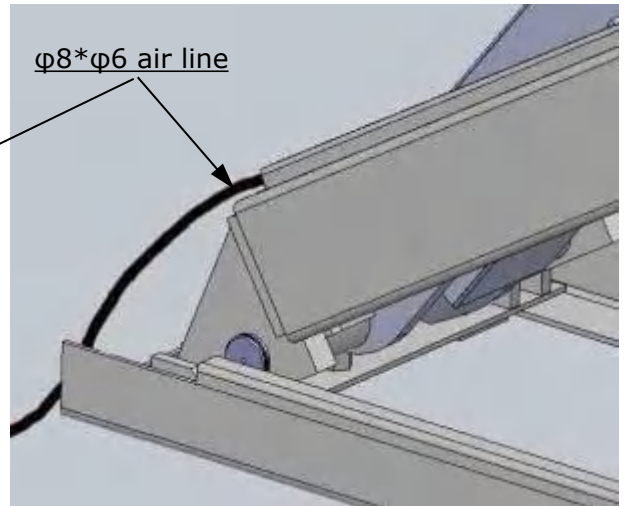
Connect air source

Oil-water separator

95

View A

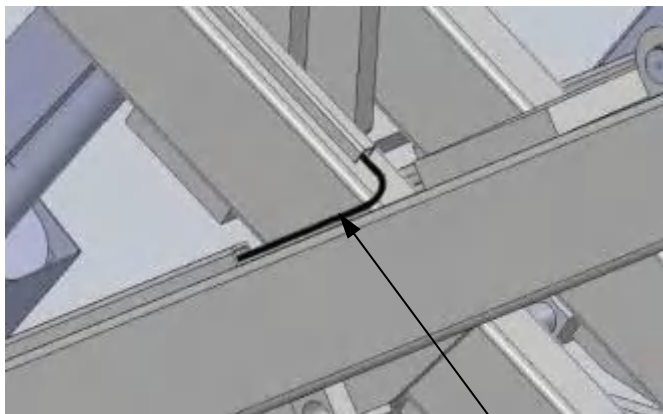
1.2 Replace 90° air line fitting with T fitting, then pass $\phi 8 \times \phi 6$ air line through control cabinet and connect to the fitting.



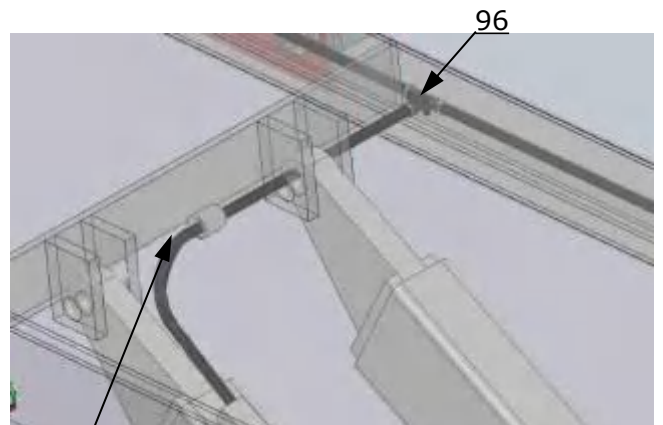
$\phi 8 \times \phi 6$ air line

View B

1.3 Pass $\phi 8 \times \phi 6$ air line through the base hole and oil hose fixing slot on outer scissor.



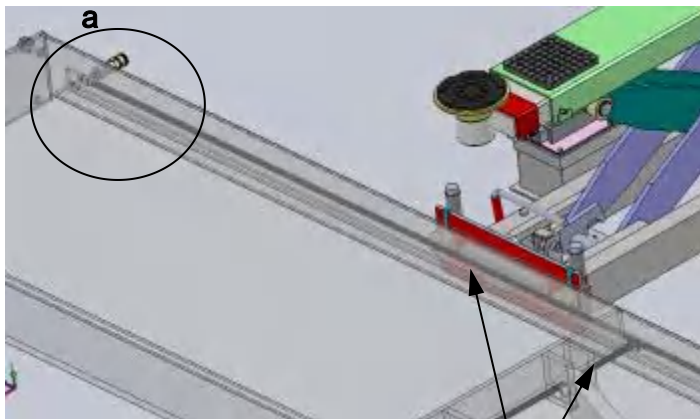
View C



96

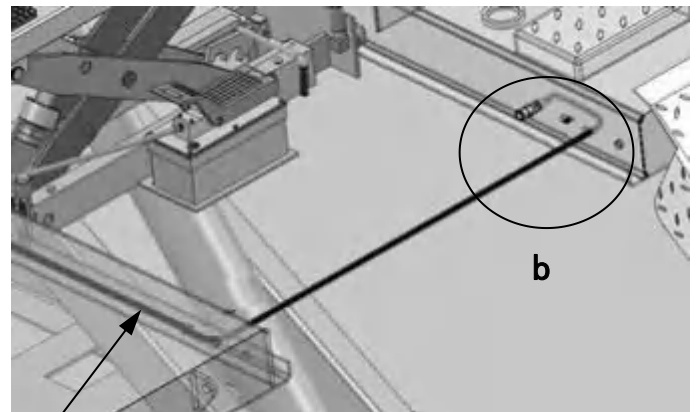
View D

$\phi 8 \times \phi 6$ air line



a

View E



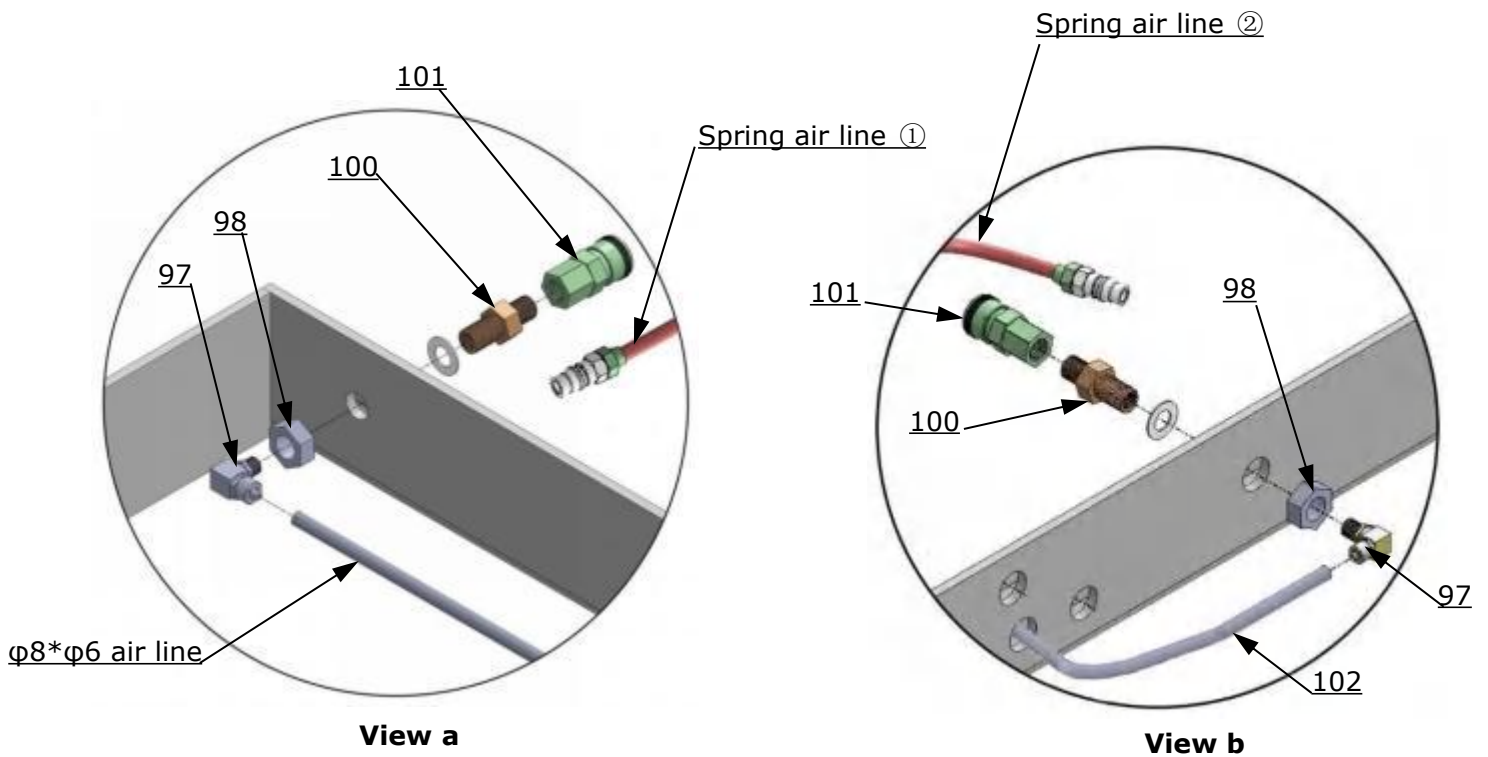
b

View F

$\phi 8 \times \phi 6$ air line

Fig.27

1.4 Use T quick fitting to divide the air into 2 ways to provide air source for 2 rolling jacks.



1.5 Install C type quick female fitting, then connect spring air line ① male end to the C type quick female fitting

1.6 Install C type quick female fitting, then connect spring air line ② male end to the C type quick female fitting

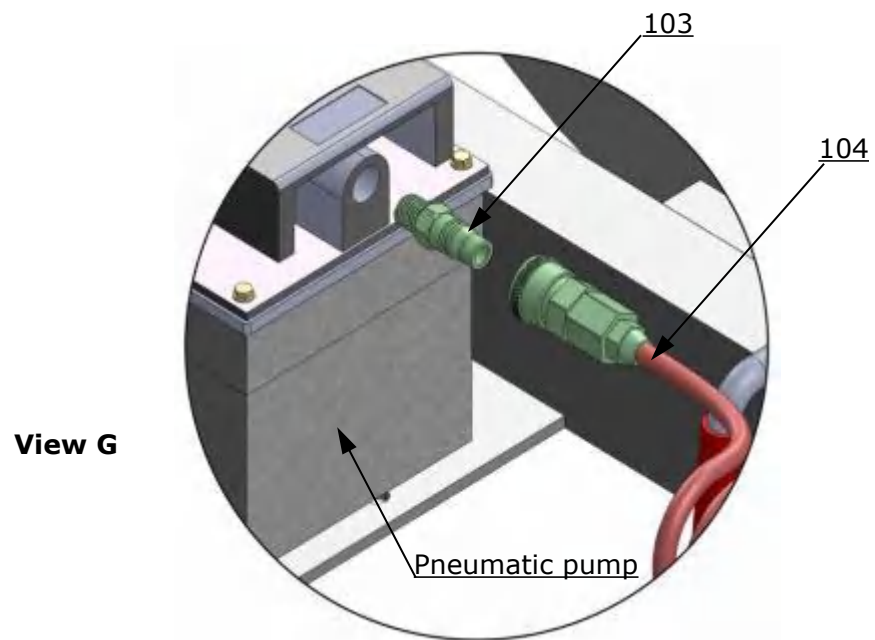


Fig.28

1.7: Connect the spring air lines female end separately to the rolling jack pneumatic pumps quick male fittings.

Part list for optional air line kits:

Item	Part #	Description	QTY
95	10420213	T fitting	1
96	10540007	T quick fitting	1
97	1061K094	90° fitting	2
98	1061K092	Hex nut M14	2
100	1061K091	Air line fitting	2
101	1004014003	C type Quick female fitting	2
102	10800025	φ8*φ6*12200mm Air line	1
103	1004334013	Quick male fitting	2
104	1004014004C	Spring air line (include 1 male fitting and 1 female fitting)	2

IV. EXPLODED VIEW

Model : AX-16A

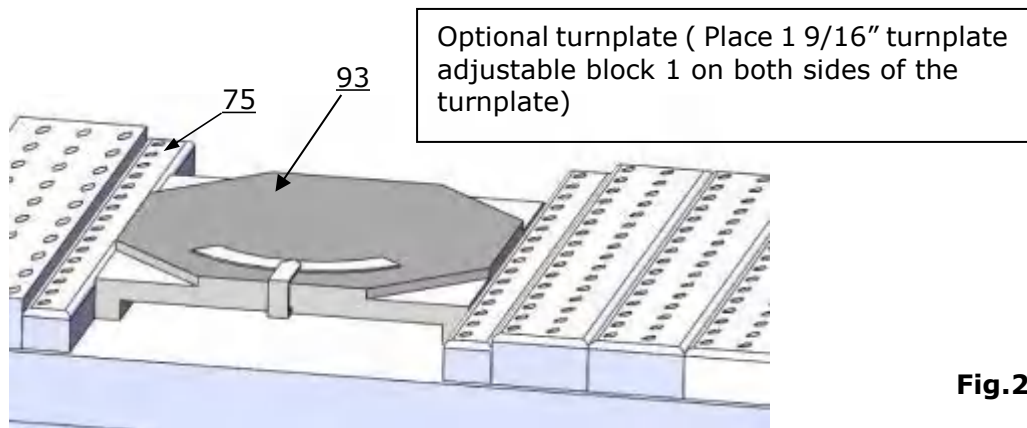
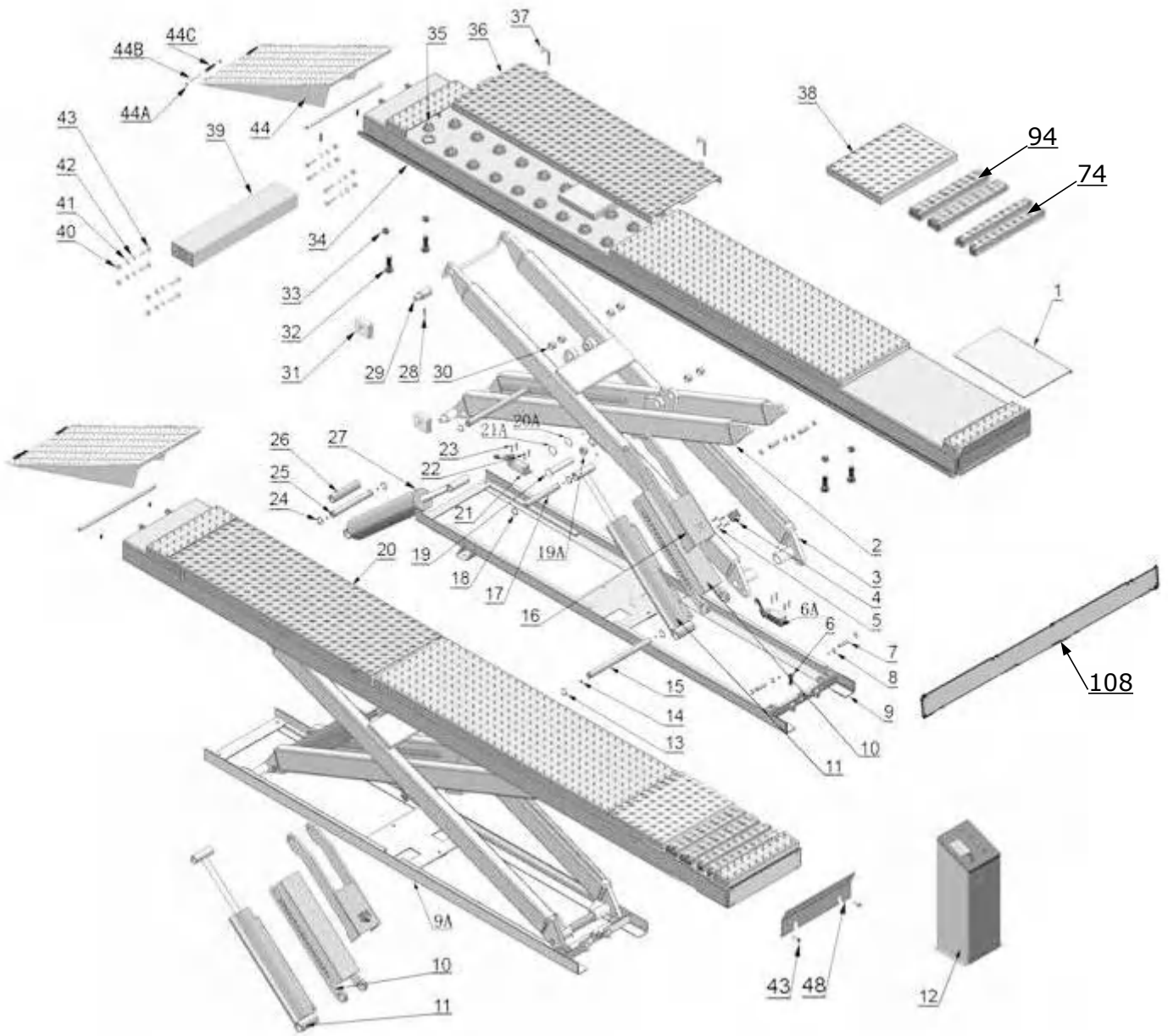


Fig.29

PARTS LIST For Model AX-16A

Item	Part #	Description	QTY
1	11520003	Shelf	2
2	11530002A	Inner scissor	2
3	11530003A	Outer scissor	2
4	10520011	Air cylinder	2
5	10420153	Round head bolt M6*20	8
6	10510012	Hex bolt M20*75	4
6A	10510040	Limit switch assy.	1
7	11520013A	Connecting pin	8
8	10206032	Clip ring φ25	16
9	11520015C	Base	1
9A	11520015D	Base	1
10	11520038B	Self-locking teeth plate	2
11	10520028B	Master cylinder	2
12	10570030	Control cabinet	1
13	10520020	Clip ring φ50	4
14	10620064	Grease fitting	24
15	11520018A	Connecting pin for master cylinder	2
16	11520021A	Self-locking support plate	2
17	11610005A	Connecting pin for cylinder	4
18	10610098	Clip ring φ35	8
19	11520024A	Connecting pin for scissors	4
19A	10610019	Nylok nut M30*3.5	4
20	11570002	Off side platform	1
20A	10610108	Flat washer φ44*φ30.5*2	4
21	10510041	Limit switch assy.	1
21A	10530023	Flat washer φ44*φ35.5*2	4
22	10620109	Round head bolt M4*18	4
23	10420164	Round head bolt M4*30	4
24	10520023	Clip ring φ38	4
25	11560026A	Connecting pin for slave cylinder	2
26	11560027	Pin bush	2
27	10520017B	Slave cylinder	2
28	10520108	Set screw M8*10	4
29	11520032A	Pin	4
30	10530042	Bronze bush φ41.3*φ35.1*28	8
31	10530012	Slide block	8
32	10510028	M20*110 hex bolt	8
33	10420175A	Hex nut M20	12
34	11570001	Power side platform	1
35	10420157	Ball seat	86
36	11570003	Slip plate	2
37	11520037	Pin for slip plate	4
38	11560003	Turnplate cover	2
39	11570004	Connecting bar	1
40	10206023B	Hex nut M12	8
41	10420026	Lock washer φ12	8
42	10206006	Flat washer φ12	8

Item	Part #	Description	QTY
43	10420136	Hex bolt M12*45	16
44	11520005A	Drive-in ramps (for on surface installation only)	2
44A	10206010	φ10 Clip pin	8
44B	11620043	Roller pin	4
44C	11610667	Roller	4
44D	10510039	Round head bolt M3*16	3
45	11510006	Pin	2
46	10201005	Cotter pin 4*50	4
47	11510018	Guide ramps (for flush mount installation only)	2
48	11520004A	Tire stop plate	2
49	10209059	Anchor bolt 3/4*5-1/2	14
50	10620071	Anchor bolM10*100	4
51	10420047	Air line inlet quick fitting	2
52	10520065	Spring air line	2
53	10570015	Air line φ6*φ4*8200mm	1
54	10420124	T fitting	1
55	10520069	90°pneumatic quick fitting	1
56	10620079	Straight fitting 1/4JIC(M) *1/4JIC(M)	6
57	10203119-01	⑦ Oil hose assy.	1
58	10540020-01	⑧ Oil hose assy.	1
59	10540019-01	⑨ Oil hose assy.	1
60	10570022-01	⑩ Oil hose assy.	1
61	10570023-01	⑪ Oil hose assy.	1
62	10570024-01	⑫ Oil hose assy.	1
63	10510023	Straight fitting G3/8-19(M)*1/4JIC(M)	2
64	1003245004	Metal bellow pipe φ25.5φ20*530	2
65	10540030-01	②③⑤⑥ oil hoses assy. 1/4" x 23 5/8"	4
66	10420119	Straight fitting 3/8NPT(M)*1/4JIC(M)	2
66A	10540021-01	①④ oil hose assy 1/4" x 141 3/4"	2
67	10420076	90° Air line fitting	1
68	10420145	Oil-water separator AFR-2000	1
69	10420146	Air line quick straight fitting	1
70	10680005	Round head bolt M6*10	4
71	10420097	90° fitting 1/4NPT(M)*1/4JIC(M)	4
71A	10510024	Straight fitting G3/8-19(M)*1/4NPT(F)	2
72	071204	Power unit	1
73	10440009	Straight fitting 3/8SEA ^{O/R} (M)*1/4NPT(M)	2
74	10540500A	Parts box (for on surface installation only)	1
75	10530500A	Parts box (for flush mount installation only)	0
76	10630103	Straight fitting J0020: 1/4NPT(M)*1/4NPT(F)	2
77	1061K050	Hex bolt M8*30	4
78	10209033	φ8 flat washer	12
79	10209005	Nylok nut M8	4
80	10209062	T fitting 1/4NPT(M)*1/4JIC(M)*1/4JIC(M)	2
81	1003105005	Two way valve KHB-1/4NPT	2
82	1052K027	90° fitting 1/4NPT(M)*1/4NPT(F)	2
82A	1061K107	T fitting 1/4NPT(F)*1/4NPT(F)*1/4NPT(F)	2
82B	10680072	90°fitting 1/4"NPT(M)*1/4"NPT(M)	2
83	10420018	M6 nylok nut	2
84	11570618	Oil hose protective cover (L=23 13/16")	2

Item	Part #	Description	QTY
85	11540028	Oil hose protective cover (L=45 11/16")	1
86	11540027	Oil hose protective cover (L=41 3/4")	2
86A	11540025	Oil hose protective cover (L=29 1/2")	1
87	11540029	Oil hose protective cover	1
88	10620065	Shim (2mm)	20
88A	10201090	Shim (1mm)	20
89	10620070	Plastic expansion anchor $\phi 6$	36
90	10620069	Wood screw M4*30	36
91	10570500	Parts box (for on surface installation only)	1
92	10570501	Parts box (for flush mount installation only)	1
93	10420158	Turnplate (optional)	2
94	11520116	Turnplate adjustable block 2 (605*145*50)	4
99	11440090	Limit rod	4
105	1003245002	Metal bellow pipe $\phi 25.5\phi 20*400$	4
106	1003245003	Metal bellow pipe $\phi 25.5\phi 20*600$	2
107	1003245001	Metal bellow pipe $\phi 25.5\phi 20*140$	2
108	11570027	Platform connecting bar L=94"	1
110	10209043	Hex bolt M8*20	4
111	10209034	Lock washer $\phi 8$	4

4.1 CYLINDERS EXPLODED VIEW(520028B/520017B)

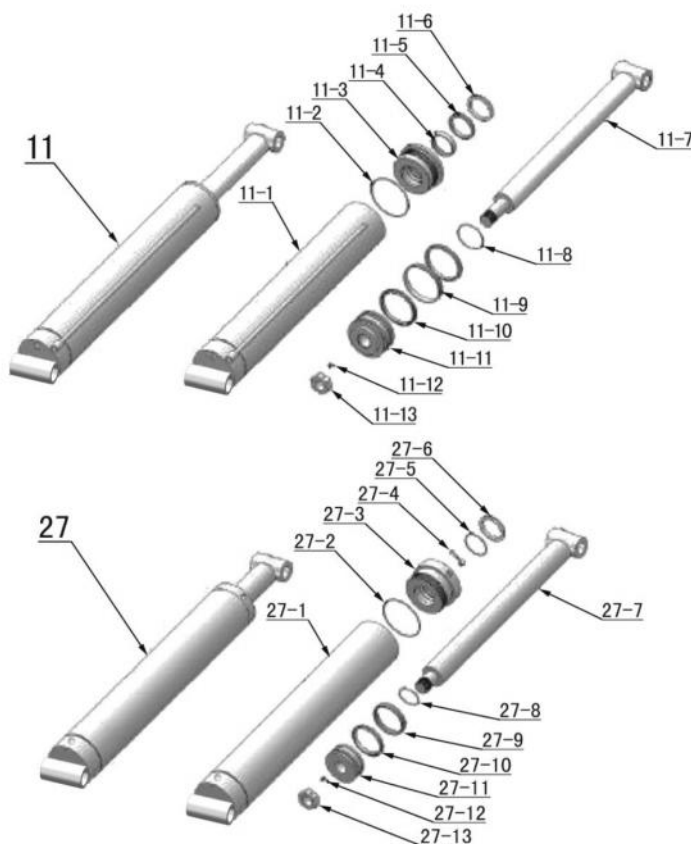


Fig. 30

Parts list for cylinders

Item	Part #	Description	QTY
11-1	10510008B	Master cylinder	1
11-2	10520053	O ring ($\phi 118*5.3$)	1
11-3	11520043	Head cap(master)	1
11-4	10520052	Support ring ($\phi 67*\phi 73*15$)	1
11-5	10520051	Y ring ISI($\phi 67*\phi 77*6$)	1
11-6	10520050	Dust ring ($\phi 67*\phi 75$)	1
11-7	11510009B	Piston rod (master)	1
11-8	10520054	O ring ($\phi 38*3.55$)	1
11-9	10520056	Support ring ($\phi 114*\phi 120*15$)	1
11-10	10520055	Y ring OSI ($\phi 105*\phi 120*9$)	2
11-11	11520045	Piston (master)	1
11-12	10520049	Set screw	1
11-13	10520047	Hex nut (master)	1
27-1	11510010B	Slave cylinder	1
27-2	10520060	O ring ($\phi 100*3.55$)	1
27-3	11520044	Head cap (slave)	1
27-4	10201034	Bleeding plug	2
27-5	10520058	O ring ($\phi 45*3.55$)	1
27-6	10217078	Dust ring ($\phi 45*\phi 53$)	1
27-7	11510011B	Piston rod (slave)	1
27-8	10520061	O ring ($\phi 28*3.55$)	1
27-9	10520062	Support ring ($\phi 94*\phi 100*15$)	1
27-10	10520063	Y ring OSI($\phi 85*\phi 100*9$)	1
27-11	11520046	Piston (slave)	1
27-12	10520049	Set screw	1
27-13	10520048	Hex nut (slave)	1

4.2 CONTROL CABINET EXPLODED VIEW

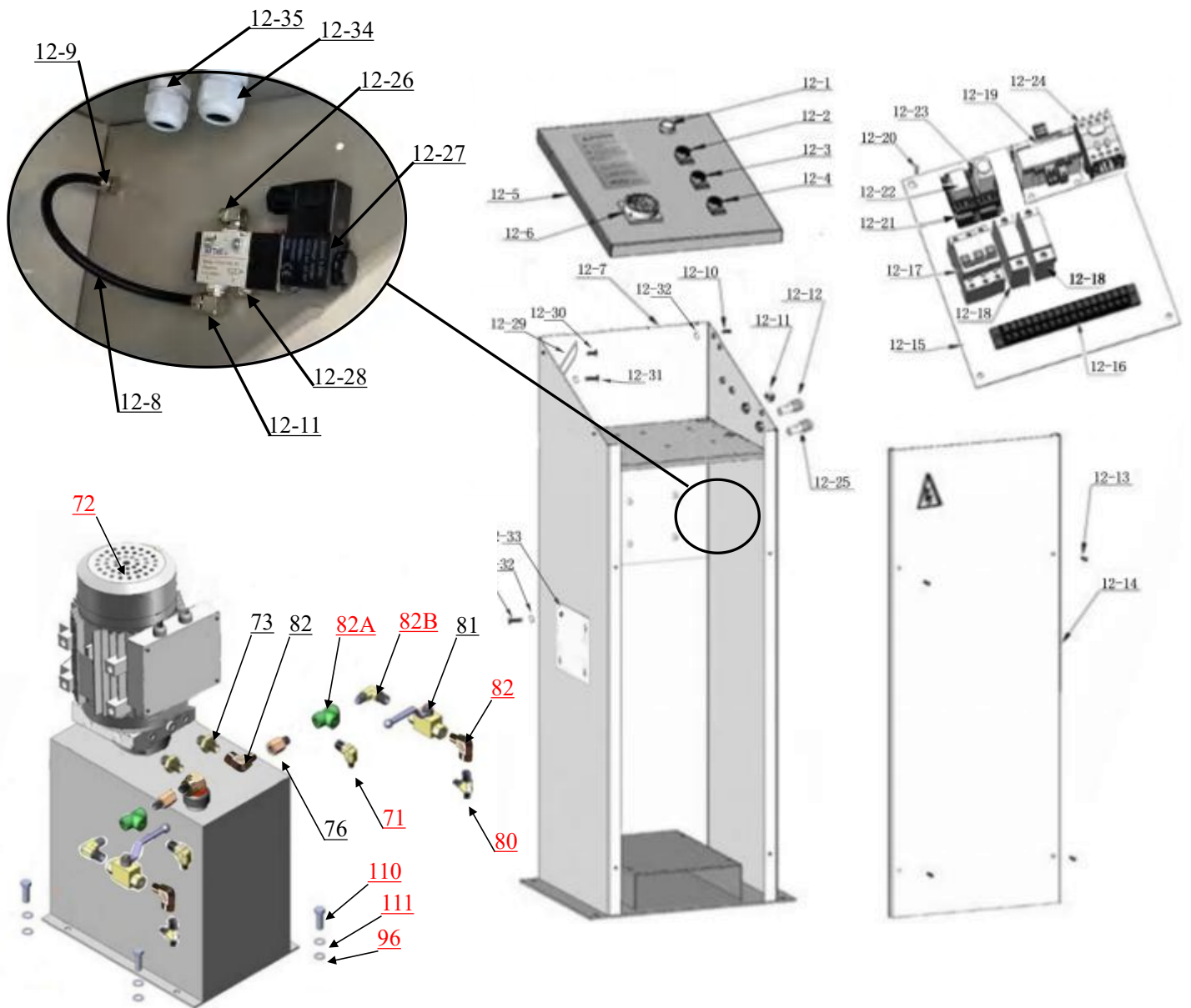


Fig. 31

Item	Part #	Description	QTY
12-1	10201094	Indicator	1
12-2	10420071	Push button UP	1
12-3	10420071	Push button Lock	1
12-4	10420072	Push button Down	1
12-5	11510724	Control panel	1
12-6	41010217	Power switch (QS)	1
12-7	11510701	Cabinet	1
12-8	10420167C	Air line $\phi 6 \times \phi 8 \times 200$ mm	2
12-9	1061K110	Straight fitting	1
12-10	10420153	Round head bolt M6*20	2
12-11	10420076	90° fitting	2
12-12	10420143	Buzzer (H)	1
12-13	10720038	Round head bolt M6*30	4
12-14	11510693	Cabinet panel	1
12-15	11510754	Electrical component mounting plate	1
12-16	10620082	Terminal	1
12-17	10202046	Breaker 2P	1
12-18	10202049	Breaker 1P	2
12-19	10580114	Transformer (TC)	1
12-20	1061K052	Round head bolt with washer M4*8	17
12-21	10420135	Time relay bracket	2
12-22	10420141	Intermediate relay (KA)	1
12-23	10420083	Time relay (KT)	1
12-24	10420084A	AC contactor(KM)	1
12-25	10420142	Lower alarm switch Pass	1
12-26	10420166	90° fitting	1
12-27	10420077	Air solenoid valve(Y2)	1
12-28	10201034	Bleed plug	1
12-29	11510691	Electrical component support plate	1
12-30	1061k108	Hex bolt M6*12	1
12-31	10217066	Hex bolt M6*15	1
12-32	10420018	Nylok nut M6	6
12-33	11510757	Cabinet cover	1
12-34	10720095	Wire connector M24*1.5	2
12-35	10420088	Wire connector M20*1.5	1

V. TEST RUN

A. Prepare for synchronization adjustment

1. Fill reservoir with Hydraulic Oil (**Note: In consideration of power unit's durability, please use Hydraulic Oil 46#**).
2. Turn on the power, push the button **UP**.

B. Synchronous adjustment

1. Lower both platforms to the lowest position.
(Note: synchronous operations must only be carried out at the lift's lowest position.)
2. Turn the Two-way valve to oil filling position (**See Fig.33**).
 - 2.1 Push button **UP** and fill oil to the slave cylinder until the platforms start to rise.
 - 2.2 Push button **LOCK** for 5 seconds to bleed the air, with buzzer sound and bleeding sound from oil tank.
 - 2.3 Repeat above 2.1 and 2.2 steps 2-3 times until no air in the hydraulic system .
 - 2.4 The lift is in its lowest state, click to press button **UP**, and then release when the platform is starting to rise.
3. Turn the Two-way valve to normal working position (**See Fig.34**), push button **UP** to rise the lift. Check if both platforms rise synchronously, if not, lower the lift to the lowest, and repeat step 2 until the two platforms can rise synchronously.



Fig. 32

Oil Filling Position



Fig. 33

Normal Working Position

4. After the two platforms run synchronously, test run without load for a full cycle.

C. Test with load.

Check and ensure the limit switches in good condition, check if the oil circuit and air circuit are leaking. Once all above are confirmed in good condition, conduct the test with load. The lift can be allowed to use only after the test is successful.

VI. OPERATION INSTRUCTIONS

To lift vehicle

1. Keep clear of site near the lift, and down the lift to the lowest position.
2. Drive vehicle to the platform and put on the brake.
3. Turn on the power and push the button **UP**, raise the lift to the working position.
Note: make sure the vehicle is steady when the lift is rising
4. Push button **LOCK** to lock the lift in the safety device. Make sure the safety is locked in the same height before working.

⚠️ WARNING It is unsafe to work under the lift without locking at the safety device after it has been lifted up, which may causes vehicle fall, damage, lift damage, human injury or even death.

To lower vehicle

1. Be sure clear of around and under the lift, only leaving operator in lift area.
2. Turn on the power switch, push the button **DOWN**, the lift is lowered continually and stopped at the height 24" from ground. Push button **DOWN** and the lower alarm button **PASS** at the same time , the lift will then lower to ground with alarm tone;
3. Drive away the vehicle when the lift is lowered to the lowest position.
4. Turn off the power, clean the lift's appearance, clean the work site.

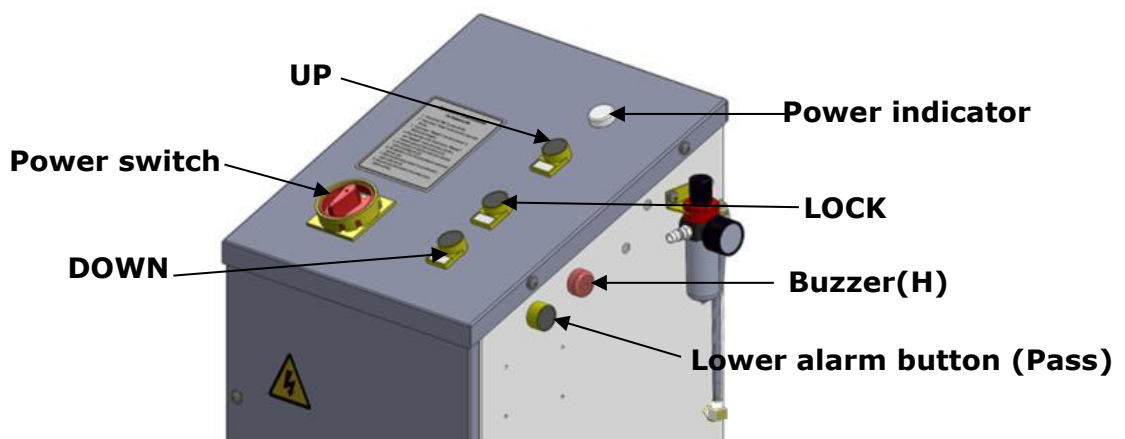


Fig.34

VII.MAINTENANCE SCHEDULE

Monthly:

1. Re-torque the anchor bolts to 150 Nm.
2. Check all fittings, anchor bolts, pins, ensure all are in good condition.

Note: All anchor bolts should take full torque. If any of the bolts does not function for any reason, **DO NOT** use the lift until the bolt has been replaced.

3. Make a visual inspection of all hydraulic hoses/lines for possible wear or leakage.
4. Adjust the synchronization of the platforms.
5. Lubricate all moving parts, see fig 35~38

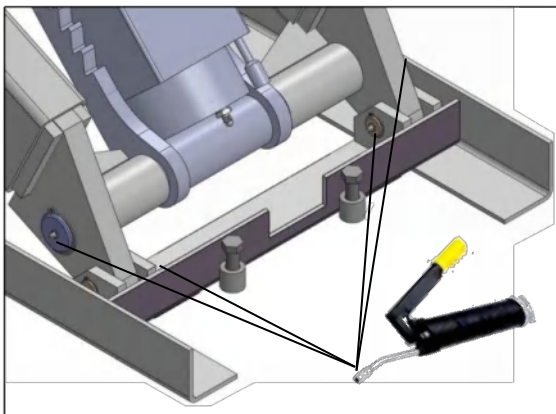


Fig.35

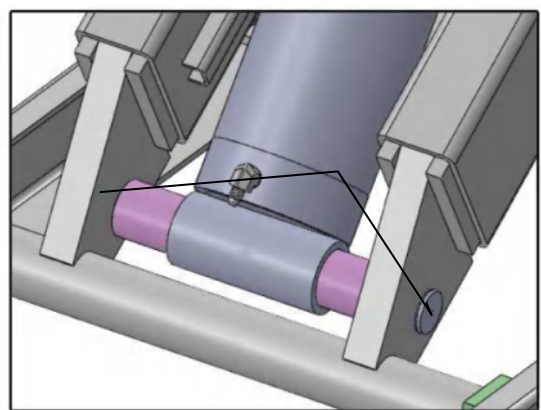


Fig.36

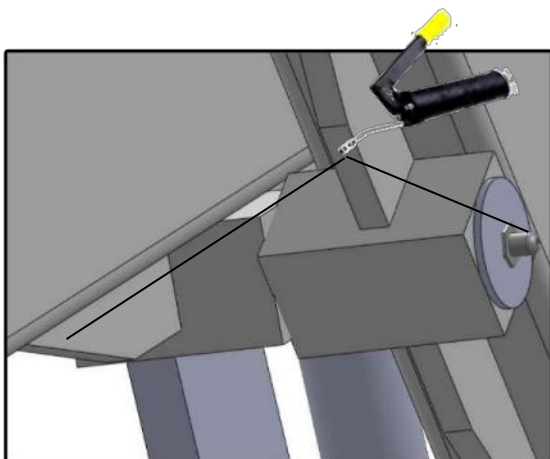


Fig.37

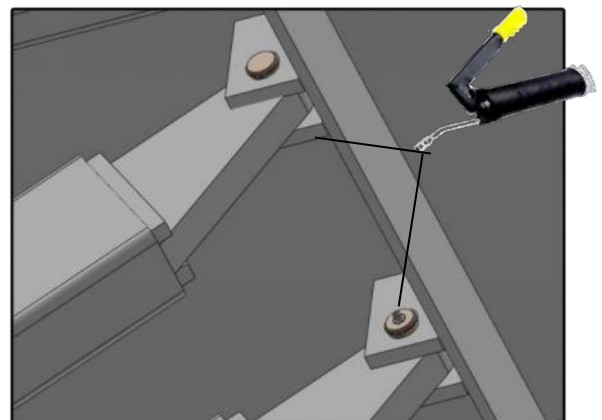


Fig.38

Every six months:

1. Make a visual inspection of all moving parts for possible wear, interference or damage.
2. Check and adjust the platform as necessary to insure level lifting.
3. Check all fastener and re-torque.

Oil cylinder maintenance:

In order to extend the service life of the oil cylinder, please operate according to the following requirements.

1. Recommend to use N46 anti-wear hydraulic oil.
2. The hydraulic oil of the lifts should be replaced regularly during using.
Replace the hydraulic oil 3 months after the first installation, Replace the hydraulic oil once a year afterwards.
3. Make at least one full trip raising and lowering per day. For exhausting the air from the system, which could effectively avoid the corrosion of the cylinder and damage to the seals caused by presence of air or water in the system.
4. Protect the outer surface of the oil cylinder's piston rod from bumping and scratching, and timely clean up the debris on the oil cylinder dust-ring and the piston rod.

VIII.TROUBLE SHOOTING

TROUBLE	CAUSE	REMEDY
Motor does not run	1.Button does not work 2.Wire connections not in good condition. 3. Motor burned out 4. AC contactor burned out	1. Replace button 2. Repair. 3.Repair or replace motor 4.Repair or replace.
Motor runs but the lift is not raised	1. Solenoid valve out of service 2. Gear pump in damage 3. Relief valve or check valve in damage. 4. Oil low level.	1. Repair or replace. 2. Repair or replace 3. Repair or replace 4.Fill tank
Rise and falls automatically	1. Solenoid valve out of service 2. Relief valve or check valve in damage. 3. Cylinder or fitting leaks.	1. Repair or replace. 2. Repair or replace. 3. Replace oil seal or fitting.
Lift rise slowly	1.Oil line is jammed 2. Gear pump leaks 3.Overload lifting 4.Power Voltage low 5.Oil mixed with air	1.Clean the oil line 2.Replace Pump 3.Check load 4.Check electrical system 5.Fill tank and bleeding air
Lift cannot lower	1. Air solenoid valve out of operation 2. Solenoid valve out of operation 3. Air cylinder in damage 4. Air line leaks.	1. Replace Air solenoid valve 2. Replace solenoid valve. 3. Replace air cylinder. 4. Check air line.

IX. CAR LIFT SAFETY TIPS

Put this safety tips in a place where you can always alert the operator. Please reference to the lift manufacturer's manual for specific information about the lift.

1. Check the lift daily. If the machine breaks down or has damaged parts, do not operate, and use original equipment parts to repair.
2. **Do not** overload . The rated weight of the manufacturer design is indicated on the label of the lift.
3. Position control of the vehicle and operation of the lift can only be done by a trained and authorized person.
4. **Do not** lift a car with occupants inside. Keep the customers or bystanders away from the lift.
5. Keep the area around the lift free of obstacles, lubricating oil, grease, garbage and other debris for a long time.
6. Carefully drive the vehicle onto the lift and lifting up to the required height for operation. **Noted:** lift it high enough if you are working underneath, and make sure the safety devices are locked.
7. **Noted:** removing(install) parts from(to) a vehicle would cause a sudden shift of gravity which may result in instability of the vehicle. Please refer to the vehicle manufacturer's service manual as a recommended procedure if you need remove/install parts from(to) the vehicle
8. Before lowering the lift , make sure all obstacles underneath, include tool tray, tool rack etc., are all removed.

X. LIFT DISPOSAL

When the car lift cannot meet the requirements for normal use and needs to be disposed, it should follow local laws and regulations.



Address:

SC Division: 1931 Joe Rogers Jr Blvd, Manning, SC 29102, USA

TX Division: 4310 Adler Dr., Suite #200, Dallas, TX 75211, USA

<http://www.amgohyd.com>

Manual No.: **72257406**
Revision Date: **2024/07**