



G1 Powered Mobile Workstation

Part # G1-AT

- ✓ PERFECT FOR:
 - BLUEPRINTING, PRODUCTION & DIAGNOSTICS

- ✓ INCREASED:
 - ACCURACY
 - EFFICIENCY
 - PRODUCTIVITY

- ✓ LOCKS FOR SECURING TECHNOLOGY

- ✓ 3-4 DAYS USE ON A SINGLE CHARGE

- ✓ RUGGED & DURABLE

- ✓ PROUDLY MADE IN USA 



- + DESK ON WHEELS
- + LOCKING UPPER BOX
- + DUAL MONITOR CAPABILITIES
- + ADJUSTABLE HEIGHT
- + SLIDE OUT PRINTER TRAY
- + 10" RUN FLAT CASTERS

866.694.2278



Power System
(Included with ALL Models)
 45 Amp / 3 Phase Charger
 DC to AC Inverter
 Fuses, Power Block, Kill Switch

Available Accessories:



SIDE SHELF
 Part # G1A-SS

Accessory Kit
 Part # G1A-ACC



SPECIFICATIONS

Dimensions (L x W x H)	27" x 21" x 69"
Weight	210 lbs
Color	Red
Assembly Type	Minor
Printer Compartment Dimensions	9.5" x 21.25" x 19"
Top Clamshell Dimensions	27" x 19.5" x 4.75"

* Batteries Not Included

Available Versions:

Part #**G1-A**: Base Model

Part #**G1-AT**: Fully Loaded
 (Laptop)


Part #**G1-ATT**: Touch Version
 (Tablet)

Solutions for Working Smarter™



GOLIATH
CARTS

TGO-DC2 "ADAS" Mobile Workstation

- ☐ TRI-SCREEN POWERED MOBILE WORKSTATION
- ☐ PERFECT FOR:
- "ADAS" CALIBRATION & SCANNING
- ☐ ALL NECESSARY EQUIPMENT CAN BE MOUNTED OR STORED FOR A TRULY MOBILE SOLUTION
- ☐ 4 DAYS OF USE ON A SINGLE CHARGE
- ☐ PROUDLY MADE IN USA 



- + STORES SCANNERS & POWER CONDITIONERS
- + LOCKABLE COMPARTMENTS
- + ADJUSTABLE SCANNER CUBBIES
- + STORAGE FOR CALIBRATION WEIGHTS
- + RUGGED 6" RUN FLAT TIRES
- + SLIDE OUT PRINTER TRAY

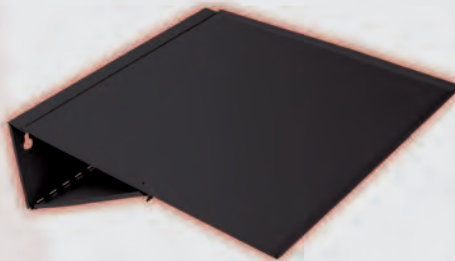
866.694.2278

Optional Accessories:

Battery Maintainer
75/100/120 Amp
3 Phase Charger
Sufficient, Consistent
Voltage for Scanning



Side Shelf
Part #TGO-DC2-SS



Included Accessories:

Power System
45 Amp / 3 Phase Charger
DC to AC Inverter
Fuses, Power Block, Kill Switch



Adjustable Cubby
Fits Most
Scan Tools
(Scanner Not Included)



SPECIFICATIONS

Dimensions (L x W x H)	21.25" x 48.5" x 69.75"
Weight	200 lbs
Color	Black
Assembly Type	Minor
Printer Compartment Dimensions	9.375" x 26.5" x 18.5"

*Batteries Not Included

Available Versions:

Part #TGO-DC2: Base Model

Part #TGO-DC2-L:
Laptop Version

Part #TGO-DC2-T:
Tablet Version

Solutions for Working Smarter™



L1 Laptop Locker

Part # L1-A
Wall Mounted Cabinet



Keyless Entry System

Part # L1-ASP
Mobile Workstation



- + ELECTRONIC KEYPAD LOCK
- + FITS TABLETS AND LAPTOPS 17" OR SMALLER
- + ELASTIC STRAPS SECURE LAPTOP IN PLACE
- + CUSHIONED PLATFORM WHERE LAPTOP SITS
- + TABLET ADAPTOR ACCESSORY AVAILABLE



Available Accessories:

Optional Printer Shelf



Tablet Adaptor:
Part # L1A-TA



Available Configurations:

- L1-AS:** L1-A with Stand
- L1-ASP:** L1-A with Stand and Printer Shelf



GOLIATH CARTS

CK Customer Check-In Kiosks



Perfect for CCC's New
Engage Module

Part # CK-100
Floor Stand

Kiosks

Part # CK-101
Counter Top



(Branding Not
Included)



Holes for
Securing to Counter

- + SECURITY BRACKET FITS MOST TABLETS
- + TABLET SECURITY - EASY TO LOCK & DEPLOY
- + BRANDED - ADD GRAPHICS FOR CUSTOMIZATION
- + BACK WHEELS FOR MOBILITY - (PART #CK-100)
- + DIMENSIONS: 48" x 16 1/4" x 14 11/32"
- Tablet and Branding not included

Solutions for Working Smarter™



GOLIATH CARTS

IC-LC2 Inventory Control Solutions

AUDIT CAPABLE LOCK



- } PERFECT FOR:
 - INVENTORY MANAGEMENT/CONTROL
- } INCREASED:
 - INVENTORY VISIBILITY
 - EMPLOYEE ACCOUNTABILITY
- } REDUCE SPEND & IMPROVE ACCOUNTING
- } FLEXIBLE: USE ANY DEVICE & ANY SOFTWARE
- } IMPROVE JOB COSTING
- } PROUDLY MADE IN USA 



- + EFFECTIVE LEAN INVENTORY MANAGEMENT
- + LOCK INTERFACES WITH ANY INVENTORY SYSTEM TO AUDIT CABINET ACCESS
- + INTEGRATED LED LIGHTING
- + DIMENSIONS: L24" x W36" x H78"
- Acro-Bins NOT Included



866.694.2278

7

GOLIATHCARTS.com



IC-MC2 Mobile Inventory Control

GOLIATH CARTS



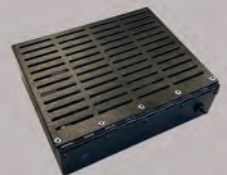
- + REDUCE WASTED MOVEMENT
- + INTEGRATE LOCK WITH ANY INVENTORY SYSTEM TO AUDIT CABINET ACCESS
- + MOBILIZE YOUR INVENTORY SYSTEM
- + DIMENSIONS: L24" x W36" x H42"
- Acro-Bins NOT Included

LC2 and MC2 Available Accessories:

USB & Bluetooth Box

Part # IC-BTB

Part # IC-USB



Optional Bluetooth or USB Controller and Cables/
Blocks for Lock Interface

Auxiliary Power Box

Part # IC-AUX



Optional: To Power Mobile Inventory
Control Cabinet



GOLIATH
CARTS

PR1 Parts Cart



- + CONTROL YOUR PARTS WORKFLOW
- + FOLDING SHELVES AND BUMPER STANDS
- + CARTS NEST FOR EASY STORAGE
- + FINE MESH KEEPS SMALL PARTS FROM DISAPPEARING
- + HIGH QUALITY POLYURETHANE WHEELS
- + ASSEMBLES IN LESS THAN 15 MINUTES
- + DIMENSIONS: 46" x 24" x 69"

866.694.2278



GOLIATH CARTS

PR1 "Fully Loaded" Parts Cart

- + ENHANCED PARTS MANAGEMENT
- + FULLY LOADED (PR1-XPC)
 - INCLUDES PANEL CART (FOR HEAVY HITS) AND RO HOLDER
- + MIX AND MATCH ACCESSORIES



Available Accessories:

RO Holder:

Part # PR1-RO
Whiteboard and RO
Sleeve. Hangs on Cart.



Panel Cart:

Part # PR1-PC
Attaches to Cart
Stores Large Panels



Solutions for Working Smarter™



P1 Painter's Prep Cart



Accessories Included:
Part #: P1-BP
Continuous Roll Dispenser

- PERFECT FOR:
 - MANAGING & CONTROLLING INVENTORY
 - POINT-OF-USE PREP CART SOLUTION

Part # P1-A

- LOCKING TOOL AND MATERIAL STORAGE

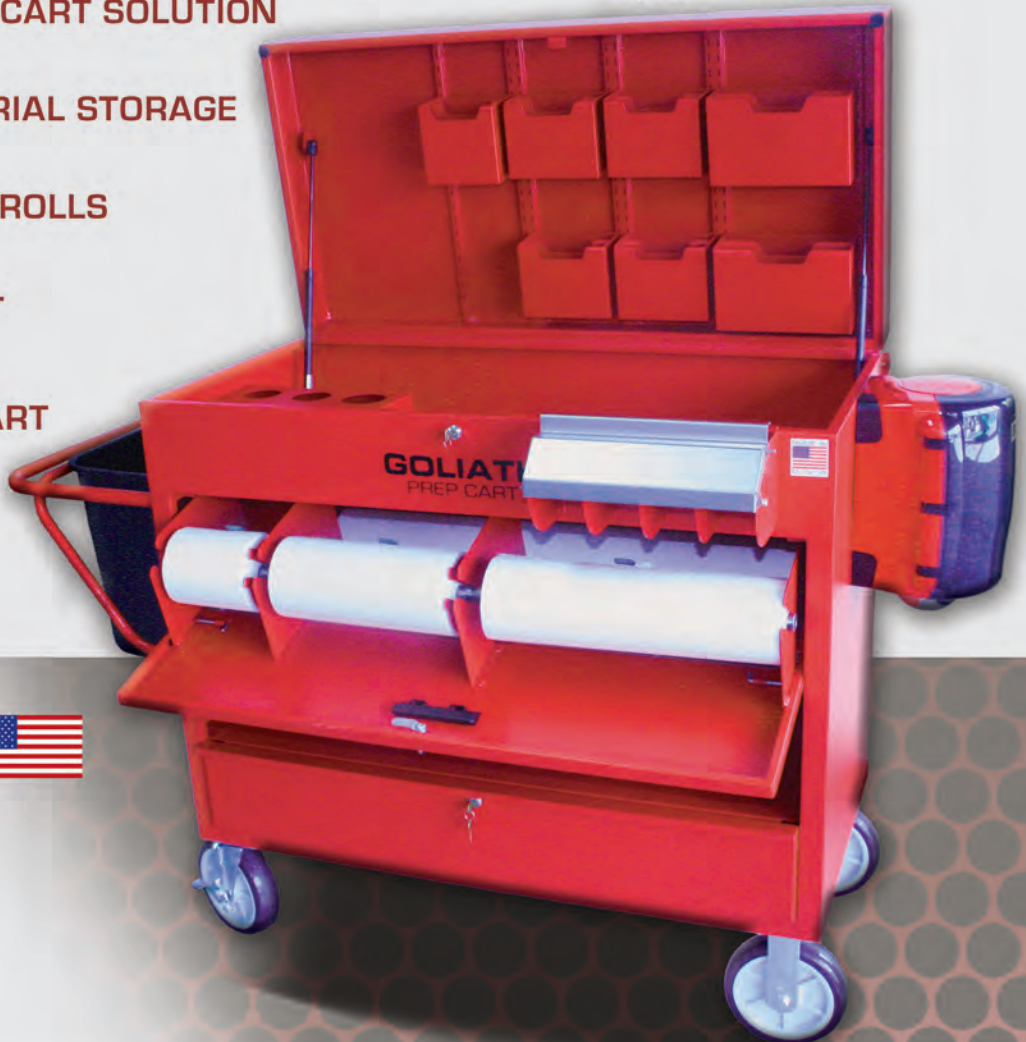
- HOLDS 6", 12", 18", & 36" ROLLS

- STORES AND SECURES ALL PAINT PREP MATERIALS

- PAPER TREE, MATERIAL CART & TOOL CART ALL IN ONE


- FRONT PANEL OPENS TO CHANGE PAPER. CLOSSES TO KEEP PAPER CLEAN

- PROUDLY MADE IN USA 





D1 Mobile Detailer Cart

- 🛡️ CONTROLS AND STREAMLINES THE DETAIL DEPARTMENT WORKFLOW
- 🛡️ LOCKING TOOL AND MATERIAL STORAGE
- 🛡️ MINIMIZES CROSS CONTAMINATION
- 🛡️ GIVES SHOP MOBILITY & CONTROL OF RESOURCES
- 🛡️ DIMENSIONS: 88" X 22" X 63"
- 🛡️ PROUDLY MADE IN USA 

Part # D1-A



STORES THE FOLLOWING:

- + INTERIOR/EXTERIOR PRODUCTS
- + LARGE FORMAT DETAILING MATERIALS
- + SEAT COVERS
- + BUFFER PADS
- + MICROFIBER CLOTHS
- + BUFFERS & TOOLS



**GOLIATH
CARTS**

UD Uni-Dolly - Car Dollies

Part # UD4800-A
4800 lb. Capacity



Part # UD9600-A
9600 lb. Capacity

* Consists of (2) UD4800 Dollies with
(1) Connection Kit

- + MOVE VEHICLES SAFELY AND EFFICIENTLY
 - EASILY MOVE UNDRIVEABLE VEHICLES
- + ADAPTORS PIVOT FOR FRAME RACKS & TOW TRUCKS
- + SAFER THAN FLOOR JACKS
- + HEAVY DUTY STEEL FRAME, DURABLE POWDER COAT FINISH
- + ADJUSTABLE HEIGHT (14"-21.5") AND WIDTH (30"-60")
- + PRECISION BEARING SWIVEL CASTERS

866.694.2278

Quick Release Adaptors:



Pinch Weld

Part #UD4800-PWA



Hub

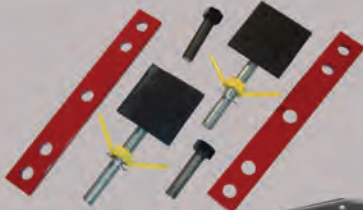
Part #UD4800-HA



Frame

Part #UD4800-FA

Connection Kit
Part #UD4800-CK
* Joins (2) Dollies
Together

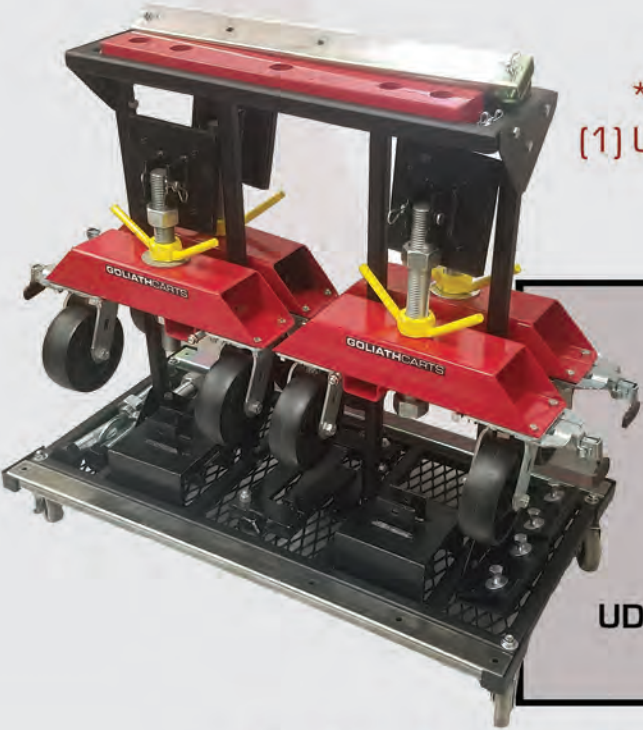


Engine Kit
Part #UD4800-EK

Dolly Stand

Part #UD-Stand

* Holds (2) UD4800 or
(1) UD9600 with Accessories



Available Packages:

UD-S-148: Stand with (1) UD4800 Dolly

UD-S-248: Stand with (2) UD4800 Dollies

UD-S-196: Stand with (1) 9600 Dolly

UD-S-196X: Stand with (1) UD9600 Dolly with Pinch Clamp,
Frame, and Hub Adaptors

Solutions for Working Smarter™



GOLIATH
CARTS



KEYLESS ENTRY WITH
KEY OVERRIDE

PG1 Paint Gun Locker

- KEYLESS ENTRY PAINT GUN LOCKER
- SAFELY STORES UP TO 24 PAINT GUNS
- STORAGE FOR PERSONAL ITEMS
- PADDED TO PROTECT EQUIPMENT
- MOUNTS ON WALL OR SIDE OF P1 PAINTER'S TOOLBOX
- DIMENSIONS: 33"H X 22"W X 15"D



Part # PG1-A





GOLIATH
CARTS

K1 Key Locker

Part # K1-A

- ☐ KEYLESS ENTRY - KEY STORAGE LOCKER
- ☐ STORE AND CONTROL CUSTOMER KEY ACCESS
- ☐ SAFELY STORES UP TO 120 CUSTOMER KEYS
- ☐ STORAGE FOR PERSONAL ITEMS
- ☐ WALL MOUNTABLE
- ☐ DIMENSIONS: 30"H X 20"W X 3"D



KEYLESS ENTRY WITH
KEY OVERRIDE

866.694.2278

16

GOLIATHCARTS.com



BP Bumper Stands

- + HOLDS (8) BUMPERS; MESH STORAGE SHELF
- + ARMS ADJUSTABLE IN 4" INCREMENTS
- + DIMENSIONS: 40"W X 84"H X 32"D
- + SWIVEL LOCKING CASTERS

Part # BP-Roll
Mobile Rolling



Part # BP-Wall
Wall Mounted



- + (4) UPRIGHTS AND (12) CUSHIONED ARMS
-HOLDS 6 BUMPERS
- + ARMS FOLD FOR EASY STORAGE
- + DIMENSIONS: 44"H X 26"D
- + BOLTS TO WALL (BOLTS NOT INCLUDED)

Solutions for Working Smarter™

866.694.2278

17

GOLIATHCARTS.com



GOLIATH CARTS

SANI-SAFE Hand Sanitizer Station



6
Colors
available



NEW
Adjustable Stand



- 🛡️ 2, 3 & 4 BOTTLE DISPENSERS
- 🛡️ ONE GALLON SIZE AVAILABLE
- 🛡️ MOUNT ON WALL OR COUNTER
- 🛡️ DURABLE METAL WITH SECURITY LOCK
- 🛡️ BULK REFILL TO REDUCE COST
- 🛡️ CUSTOM ENGRAVING AVAILABLE
- 🛡️ UNIVERSAL STAND - FITS ALL MODELS
- 🛡️ PROUDLY MADE IN USA 

* Sanitizer gel & bottles not included