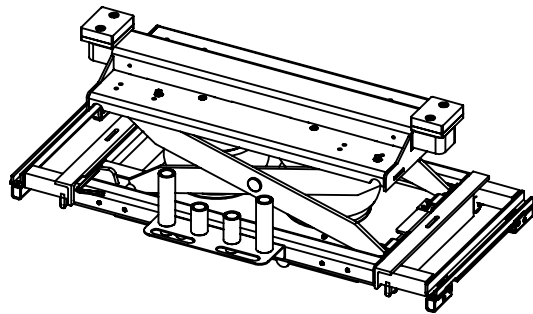


ITEM	PART NUMBER	DESCRIPTION	QTY
1	JW-8500-508	PAN ASSY BOTTOM	1
2	JW-8500-504	TOP PLATE-CHANNEL ASSY	1
3	JW-8500-208	MOTION LIMITER-BOTTOM	4
4	JW-8500-511	SLIDE BAR-WELDED	2
5	JW-8500-513	CONTROL BOX	1
6	JW-8500-515	JW-9000 OUT RIGGER ASSY	2
7	JW-8500-415	SAFETY CAM ASSY	1
8	JW-8500-416	INNER X WELDMENT	1
9	JW-8500-512	COVER-CONTROL BOX	1
10	JW-8500-520	POST 3 INCH	2
11	JW-8500-526	BRACKET EXTENSION POST	1
12	JW-8500-519	POST 6 INCH	2
13	QSP05M	PAD	.5
14	JW-8500-529	JW-9000 LOCK RELEASE HANDLE	1
15	203-208-3	SJ BLUE OUTRIGGER WHEEL	4
16	SB700004	MACHINED SJ WHEEL AXLE	4
17	H-JW9000	JW-9000 HARDWARE KIT	1
18	1345	BRASS BULKHEAD FITTING	1
19	108-60	CHECK VALVE 1/4 NPT	1
20	T-1/4 PU BLACK TUBE	T-1/4 PU BLACK TUBE	5
21	108-75	MJV-2 VALVE	2
22	108-76	MJV-3 VALVE	1

ITEM	PART NUMBER	DESCRIPTION	QTY
23	F-JW EXHAUST	DIRECTION CONTROL VALVE	1
24	PC-4M-BK	RAISE RELEASE, BLACK BUTTON	2
25	PC-4F-YL	YELLOW RELEASE BUTTON	1
26	F-3/8 X 1/4NPT L	3/8 PUSH X 1/4 NPT ELBOW	2
27	F-3/8 T	3/8 TUBE 3 WAY UNION T	1
28	F-3/8 X 3/8NPT STR	3/8 TUBE X 3/8 NPT STRT	1
29	F-1/4TX1/8NPT L	1/4 PUSH x 1/8 NPT ELBOW	3
30	F-1/4P STRAIGHT	1/4 PUSH X 1/8 NPT STRT	4
31	F-1/4 X 3/8NPT STR	3/8 NPT X 1/4 PUSH STRT	1
32	F-1/4 UT	1/4 TUBE 3 WAY UNION T	1
33	JW-8500-417	OUTER X WELDMENT	1
34	JW-8500-408	BUSHING-INNER	2
35	JW-8500-409	BUSHING OUTER	2
36	136-47-100	MINI REGULATOR - 100 PSI	1
37	H-1" ESR	1" EXTERNAL SNAP RING	2
38	JW-9000-10	JW-9000 DECAL KIT	1
39	JW-8500-207	MOTION LIMITER-BOTTOM	2
40	JW-8500-411	SHIM WASHER	2
41	JW-8500-530	HEADED PIN-X PIVOT	2
42	H-1/4-20 RIV-NUT	THREADED INSERT 1/4-20	4
43	JW-8500-523	LIFT PAD WELDMENT	2
44	T-3/8 PU BLACK TUBE	3/8 BLACK POLYURETHANE TUBE	.5
45	JW-9000-518	9000# AIR SPRING	2
46	JW-9000-922	TOP SIDE OUTRIGGER ASSEMBLY	2



REV.	DESCRIPTION	DATE
D	UPDATED TO INDICATE NEW HOLE PATTERN FOR CONTROL PANEL	01/10/24
C	UPDATED BOM TO MATCH ERP SYSTEM	01/11/21
B	ADDED HEADED PIN	-
A	ADDED ROD & SHEET 3	-
REV.	DESCRIPTION	DATE
REVISIONS		

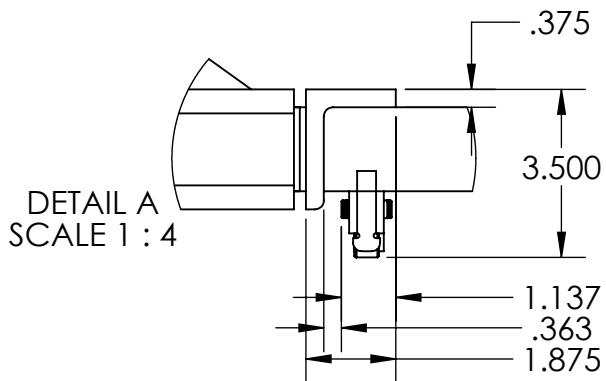
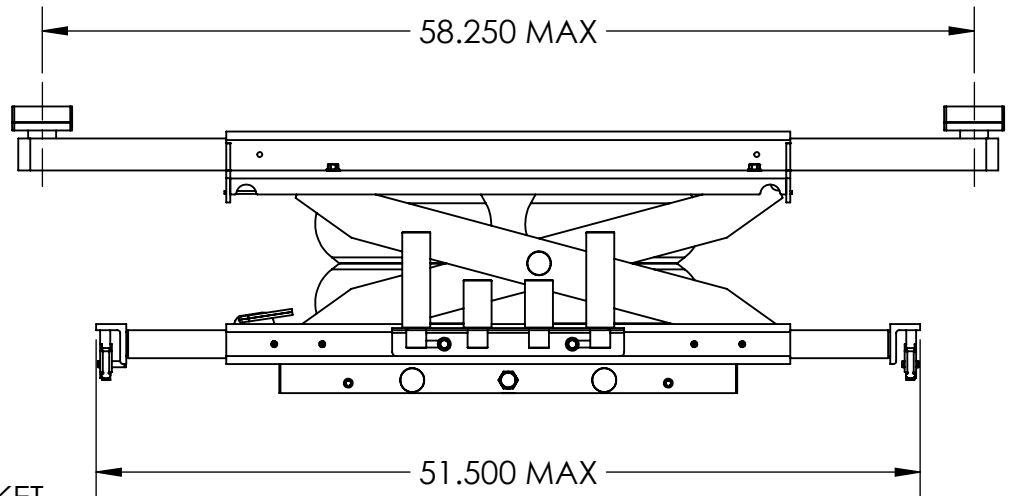
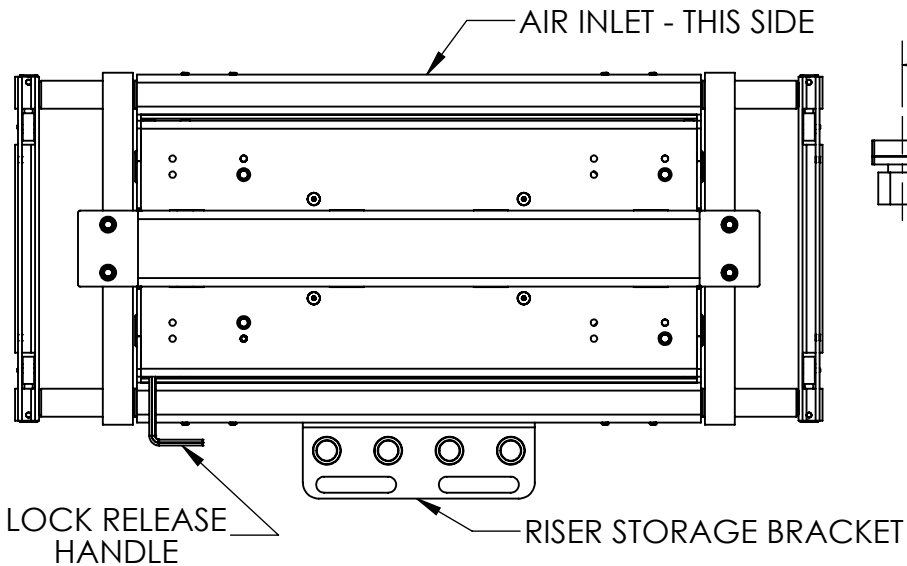
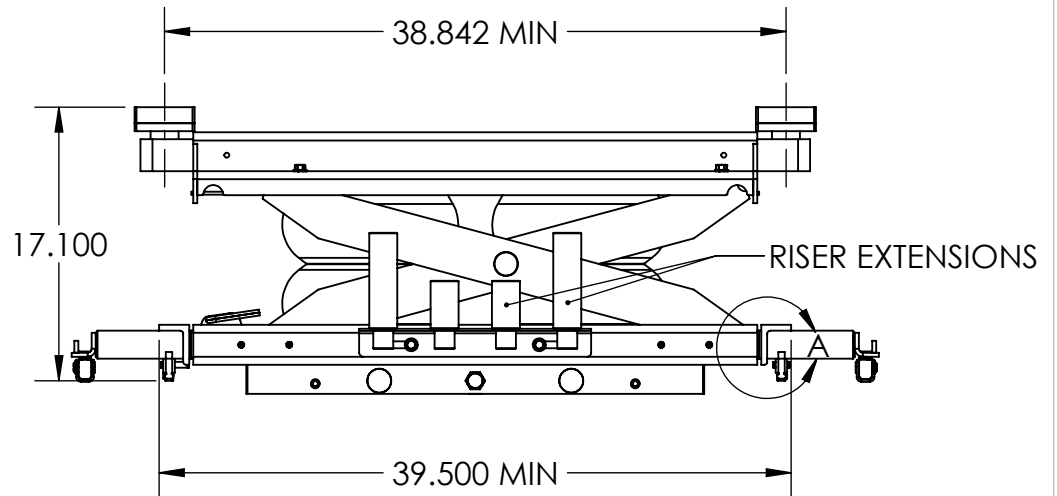
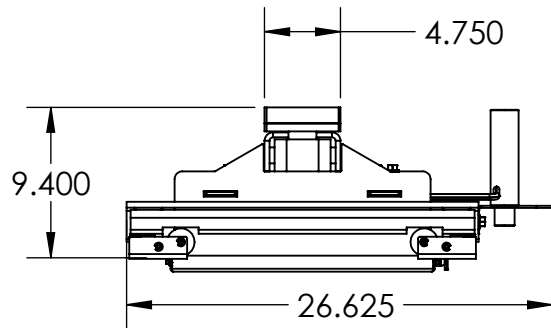
UNLESS OTHERWISE SPECIFIED:	
DIMENSIONS ARE IN INCHES TOLERANCES: FRACTIONAL ± 1/32" ANGLES: MACH ± .01° BEND ± 1° TWO PLACE DECIMAL ± .03 THREE PLACE DECIMAL ± .025	
INTERPRET GEOMETRIC TOLERANCING PER: ANSI Y14.5	
MATERIAL	ASSEMBLY
FINISH	-
DO NOT SCALE DRAWING	

	NAME	DATE
DRAWN	PJA	07/26/12
CHECKED		
ENG APPR.		
MFG APPR.		
Q.A.		
PROPRIETARY AND CONFIDENTIAL		
THE INFORMATION CONTAINED IN THIS DRAWING IS THE SOLE PROPERTY OF QSP. ANY REPRODUCTION IN PART OR AS A WHOLE WITHOUT THE WRITTEN PERMISSION OF QSP IS PROHIBITED.		



9000# ROLLING AIR BAG JACK

TITLE:		
SIZE	DWG. NO.	REV
A	JW-9000	D
SCALE: 1:20 WEIGHT: 550.369 SHEET 1 OF 6		



UNLESS OTHERWISE SPECIFIED:		NAME	DATE	
DIMENSIONS ARE IN INCHES TOLERANCES: FRACTIONAL ± 1/32" ANGLES: MACH ± .01° BEND ± 1° TWO PLACE DECIMAL ± .03 THREE PLACE DECIMAL ± .025		DRAWN	PJA	
INTERPRET GEOMETRIC TOLERANCING PER: ANSI Y14.5		CHECKED		
MATERIAL ASSEMBLY		ENG APPR.		
FINISH -		MFG APPR.		
DO NOT SCALE DRAWING		Q.A.		
		PROPRIETARY AND CONFIDENTIAL		
		THE INFORMATION CONTAINED IN THIS DRAWING IS THE SOLE PROPERTY OF QSP. ANY REPRODUCTION IN PART OR AS A WHOLE WITHOUT THE WRITTEN PERMISSION OF QSP IS PROHIBITED.		
		TITLE: 9000# ROLLING AIR BAG JACK		
SIZE A	DWG. NO. JW-9000	REV D		
SCALE: 1:12		WEIGHT: 550.369 SHEET 2 OF 6		

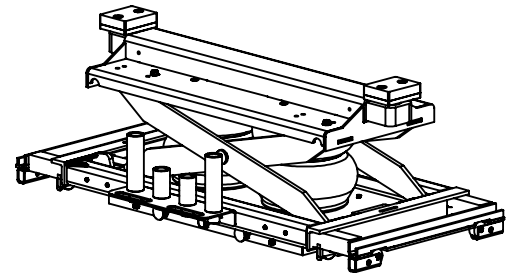
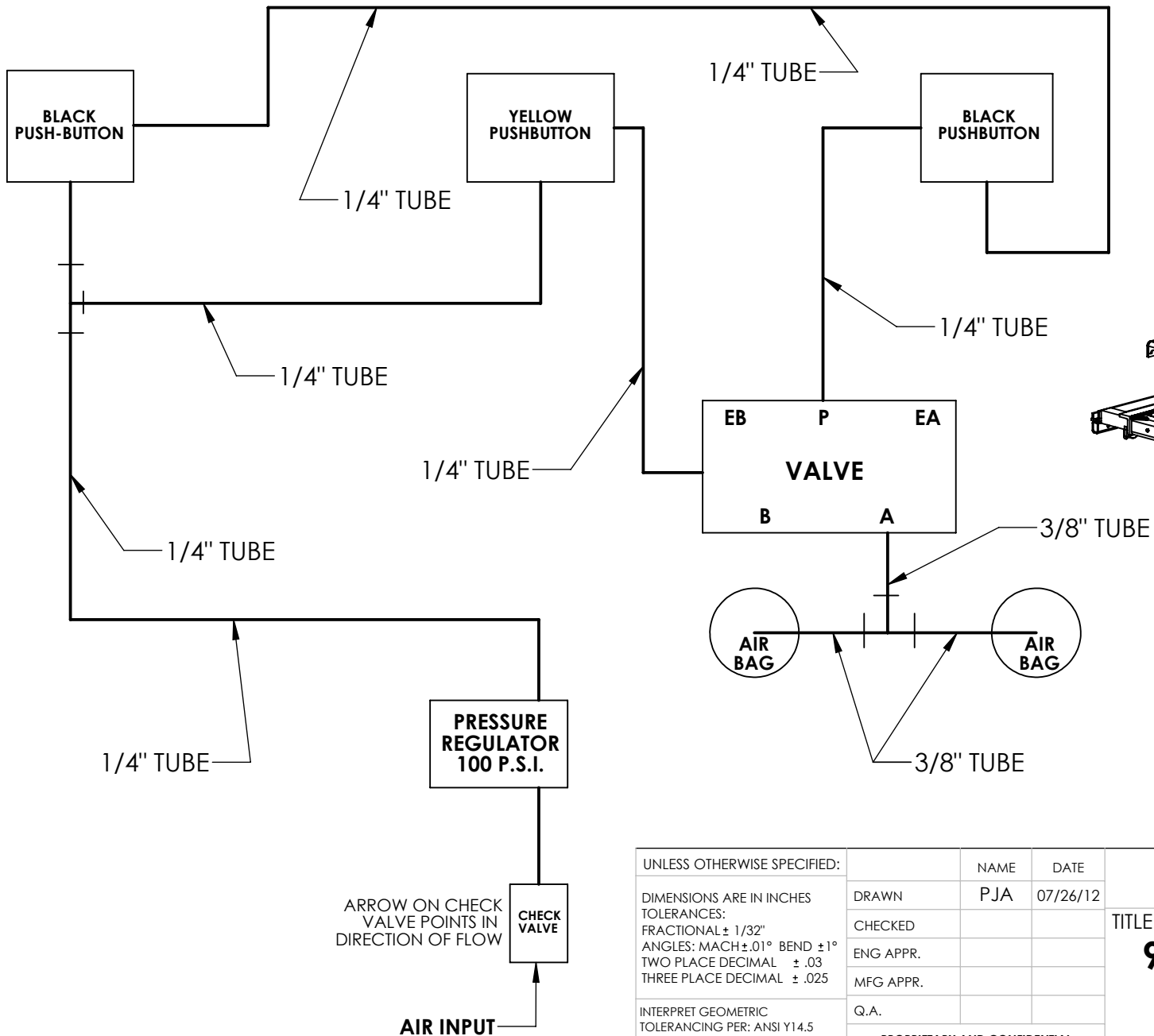
5

4

3

2

1



ARROW ON CHECK VALVE POINTS IN DIRECTION OF FLOW

UNLESS OTHERWISE SPECIFIED:	NAME	DATE
DIMENSIONS ARE IN INCHES	DRAWN	PJA 07/26/12
TOLERANCES:	CHECKED	
FRACTIONAL $\pm 1/32"$	ENG APPR.	
ANGLES: MACH $\pm .01^\circ$ BEND $\pm 1^\circ$	MFG APPR.	
TWO PLACE DECIMAL $\pm .03$	Q.A.	
THREE PLACE DECIMAL $\pm .025$	PROPRIETARY AND CONFIDENTIAL THE INFORMATION CONTAINED IN THIS DRAWING IS THE SOLE PROPERTY OF QSP. ANY REPRODUCTION IN PART OR AS A WHOLE WITHOUT THE WRITTEN PERMISSION OF QSP IS PROHIBITED.	
INTERPRET GEOMETRIC TOLERANCING PER: ANSI Y14.5		
MATERIAL		
ASSEMBLY	SIZE	DWG. NO.
FINISH	A	JW-9000
DO NOT SCALE DRAWING	REV	D

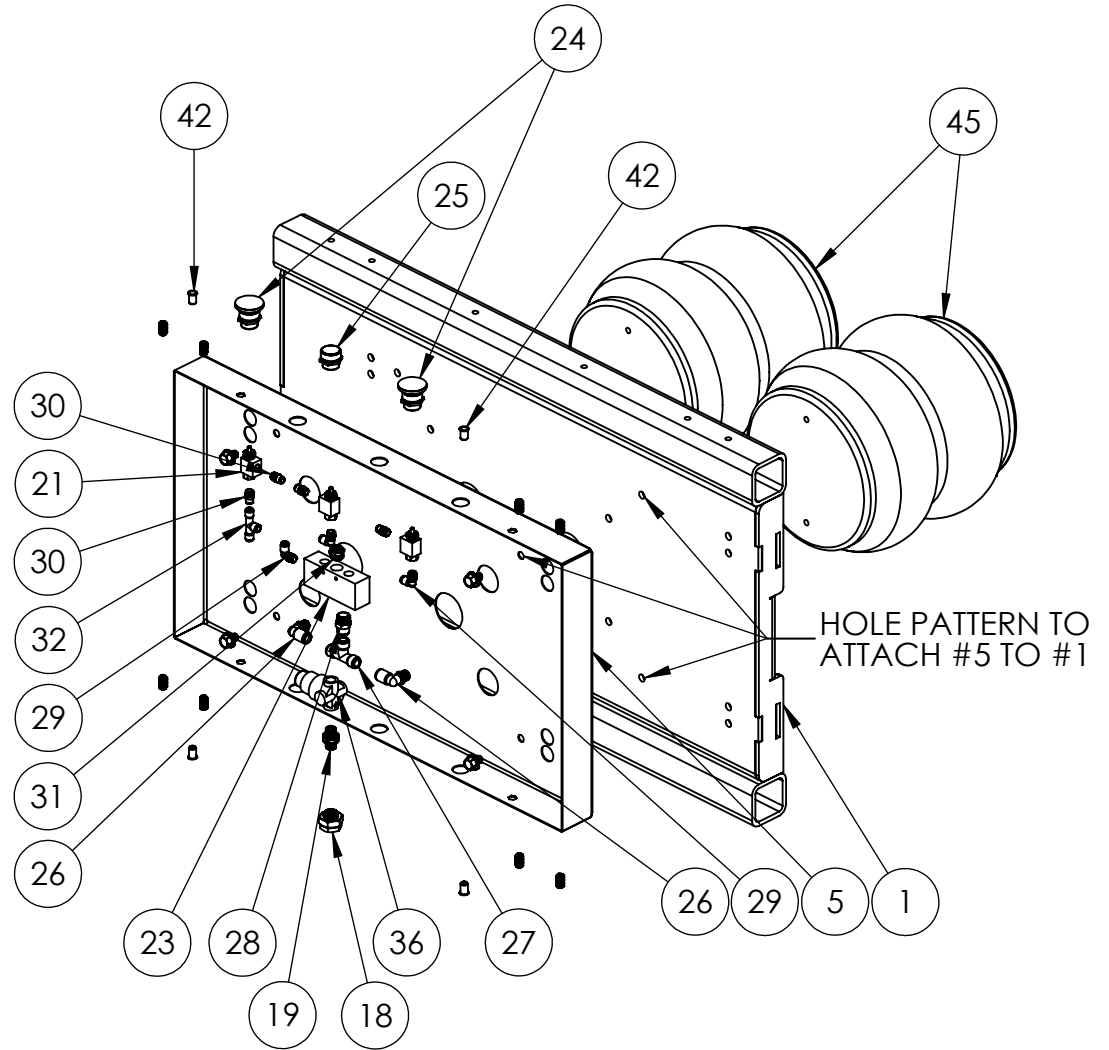
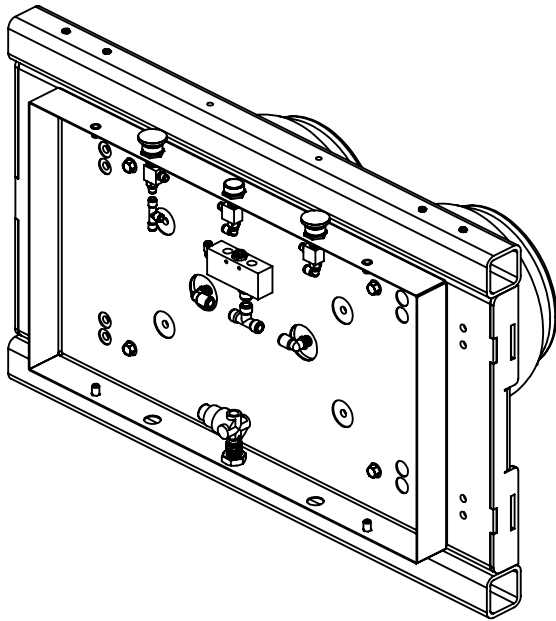


TITLE:
9000# ROLLING AIR BAG JACK


SCALE: 1:12 WEIGHT: 550.369 SHEET 3 OF 6

STEP 1

1. USING THE SCHEMATIC SHOWN ON PAGE 2, INSTALL ALL PNEUMATIC COMPONENTS INTO ITEM #5
2. USING (4) 3/8-16 X 1/2" HEX HEAD SCREWS, ATTACH PNEUMATIC CONTROL SECTION TO ASSEMBLY; ITEM #5 TO ITEM #1
3. USING (4) 3/8-16 X 1/2" HEX HEAD SCREWS, ATTACH AIR BAGS (ITEM #45) TO ASSEMBLY



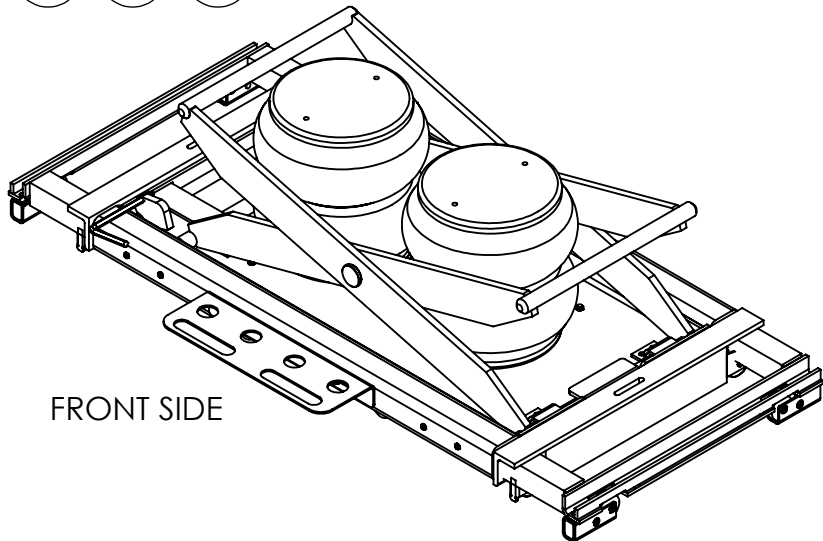
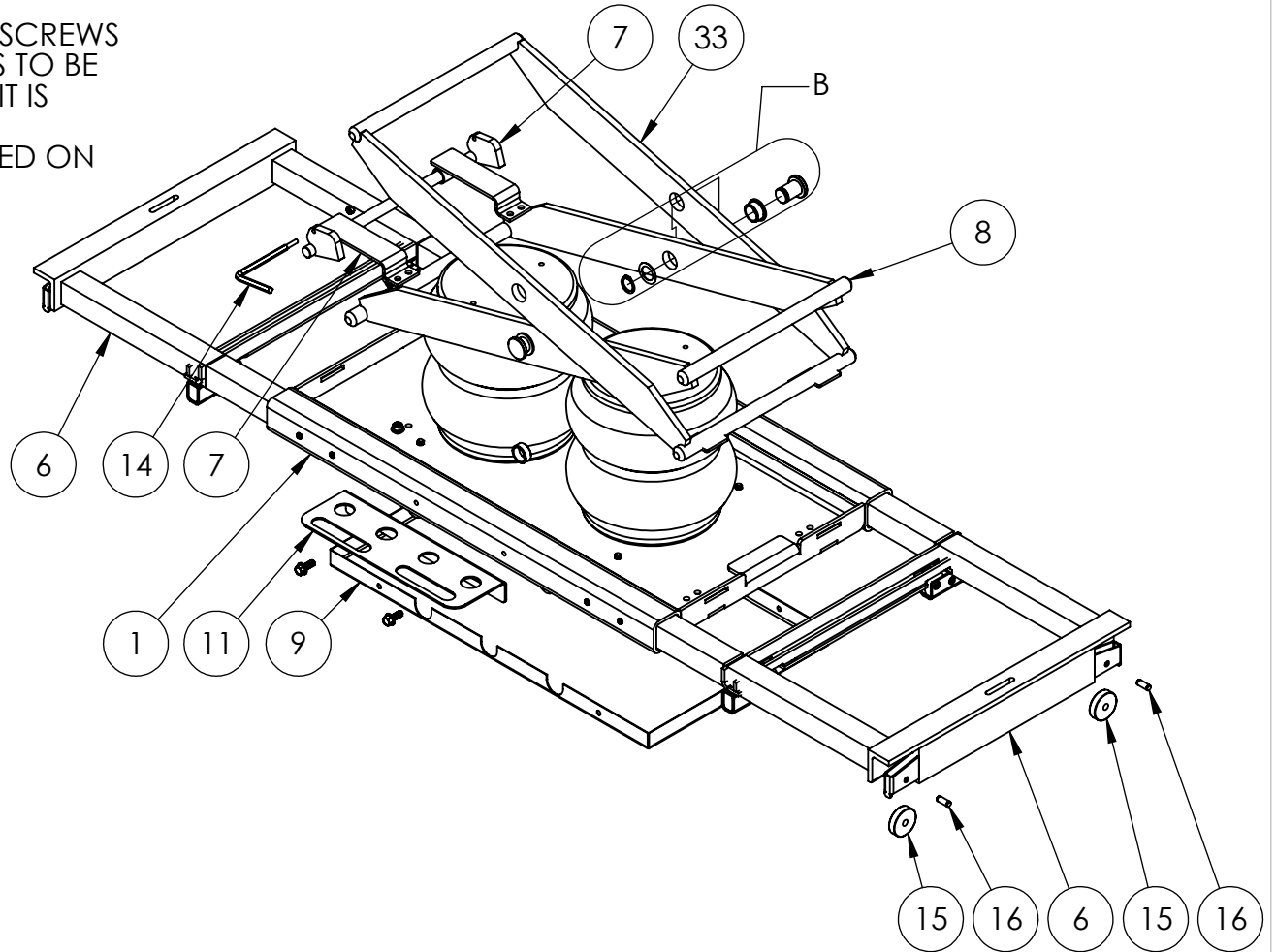
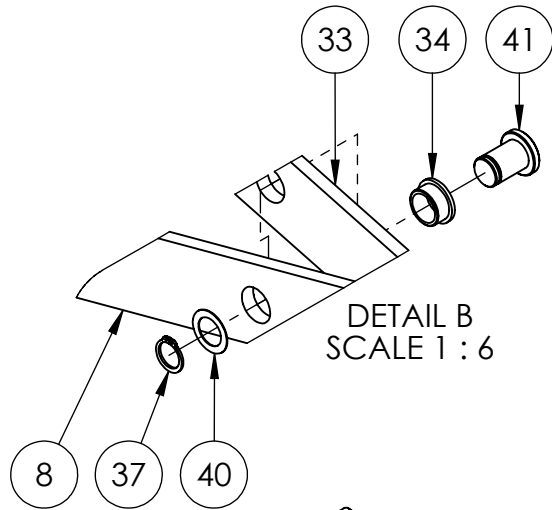
HOLE PATTERN TO ATTACH #5 TO #1

UNLESS OTHERWISE SPECIFIED:		NAME	DATE			
DIMENSIONS ARE IN INCHES TOLERANCES: FRACTIONAL $\pm 1/32"$ ANGLES: MACH $\pm .01^\circ$ BEND $\pm 1^\circ$ TWO PLACE DECIMAL $\pm .03$ THREE PLACE DECIMAL $\pm .025$		DRAWN	PJA 07/26/12			
INTERPRET GEOMETRIC TOLERANCING PER: ANSI Y14.5		CHECKED		TITLE:		
MATERIAL ASSEMBLY		ENG APPR.		9000# ROLLING AIR BAG JACK		
FINISH -		MFG APPR.				
DO NOT SCALE DRAWING		Q.A.		SIZE	DWG. NO.	REV
		PROPRIETARY AND CONFIDENTIAL THE INFORMATION CONTAINED IN THIS DRAWING IS THE SOLE PROPERTY OF QSP. ANY REPRODUCTION IN PART OR AS A WHOLE WITHOUT THE WRITTEN PERMISSION OF QSP IS PROHIBITED.		A	JW-9000	D
				SCALE: 1:10 WEIGHT: 550.369 SHEET 4 OF 6		

STEP 2

**X BRACE ASSEMBLY IS SYMMETRICAL FRONT TO BACK
OUTRIGGERS ARE SYMMETRICAL LEFT TO RIGHT**

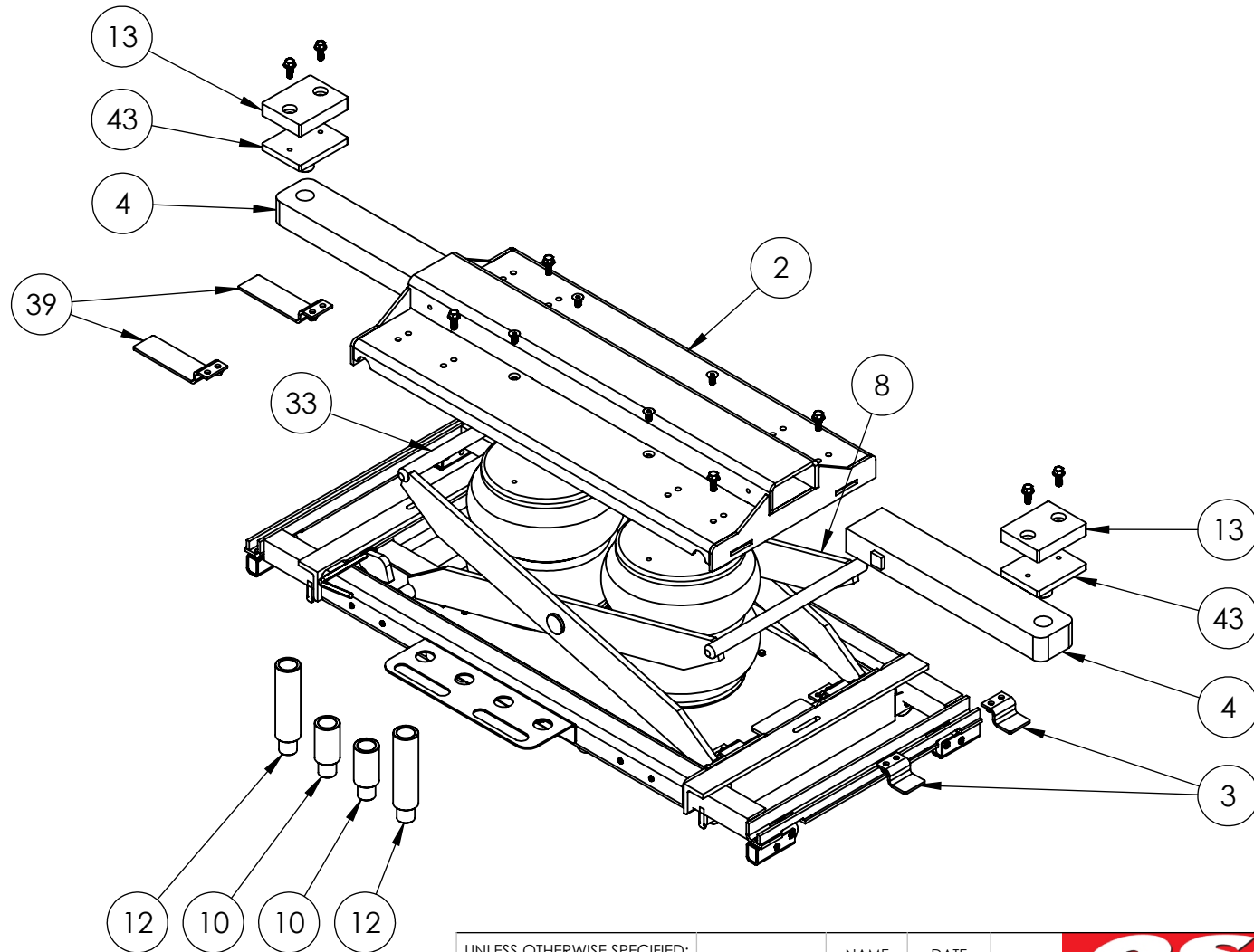
1. LOOSELY INSTALL (8) CUP POINT SET SCREWS INTO ITEM #1 AT ALL FOUR CORNERS TO BE TIGHTENED BY CUSTOMER ONCE UNIT IS INSTALLED ONTO RACK
2. ITEMS 34, 37, 40, & 41 ARE DUPLICATED ON FRONT AND BACK OF X BRACE




FRONT SIDE

UNLESS OTHERWISE SPECIFIED:		NAME	DATE	QSP QUALITY STAINLESS PRODUCTS
DIMENSIONS ARE IN INCHES TOLERANCES: FRACTIONAL $\pm 1/32"$ ANGLES: MACH $\pm .01^\circ$ BEND $\pm 1^\circ$ TWO PLACE DECIMAL $\pm .03$ THREE PLACE DECIMAL $\pm .025$		DRAWN	PJA 07/26/12	
INTERPRET GEOMETRIC TOLERANCING PER: ANSI Y14.5		CHECKED		TITLE:
MATERIAL ASSEMBLY		ENG APPR.		9000# ROLLING AIR BAG JACK
FINISH -		MFG APPR.		SIZE DWG. NO.
DO NOT SCALE DRAWING		Q.A.		A JW-9000
		PROPRIETARY AND CONFIDENTIAL		REV
		THE INFORMATION CONTAINED IN THIS DRAWING IS THE SOLE PROPERTY OF QSP. ANY REPRODUCTION IN PART OR AS A WHOLE WITHOUT THE WRITTEN PERMISSION OF QSP IS PROHIBITED.		D
		SCALE: 1:12 WEIGHT: 550.369 SHEET 5 OF 6		

STEP 3



1. ITEM #39 (2) CAPTURE THE TOP BAR OF ITEM #33
2. ITEM #3 (2) CAPTURE THE TOP BAR OF ITEM #8

UNLESS OTHERWISE SPECIFIED:		NAME	DATE			
DIMENSIONS ARE IN INCHES TOLERANCES: FRACTIONAL $\pm 1/32"$ ANGLES: MACH $\pm .01^\circ$ BEND $\pm 1^\circ$ TWO PLACE DECIMAL $\pm .03$ THREE PLACE DECIMAL $\pm .025$		DRAWN	PJA 07/26/12			TITLE:
INTERPRET GEOMETRIC TOLERANCING PER: ANSI Y14.5		CHECKED		<h2>9000# ROLLING AIR BAG JACK</h2>		
MATERIAL		ENG APPR.				SIZE
FINISH		MFG APPR.		A	JW-9000	REV
DO NOT SCALE DRAWING		Q.A.		SCALE: 1:12		WEIGHT: 550.369 SHEET 6 OF 6
		PROPRIETARY AND CONFIDENTIAL THE INFORMATION CONTAINED IN THIS DRAWING IS THE SOLE PROPERTY OF QSP. ANY REPRODUCTION IN PART OR AS A WHOLE WITHOUT THE WRITTEN PERMISSION OF QSP IS PROHIBITED.				D