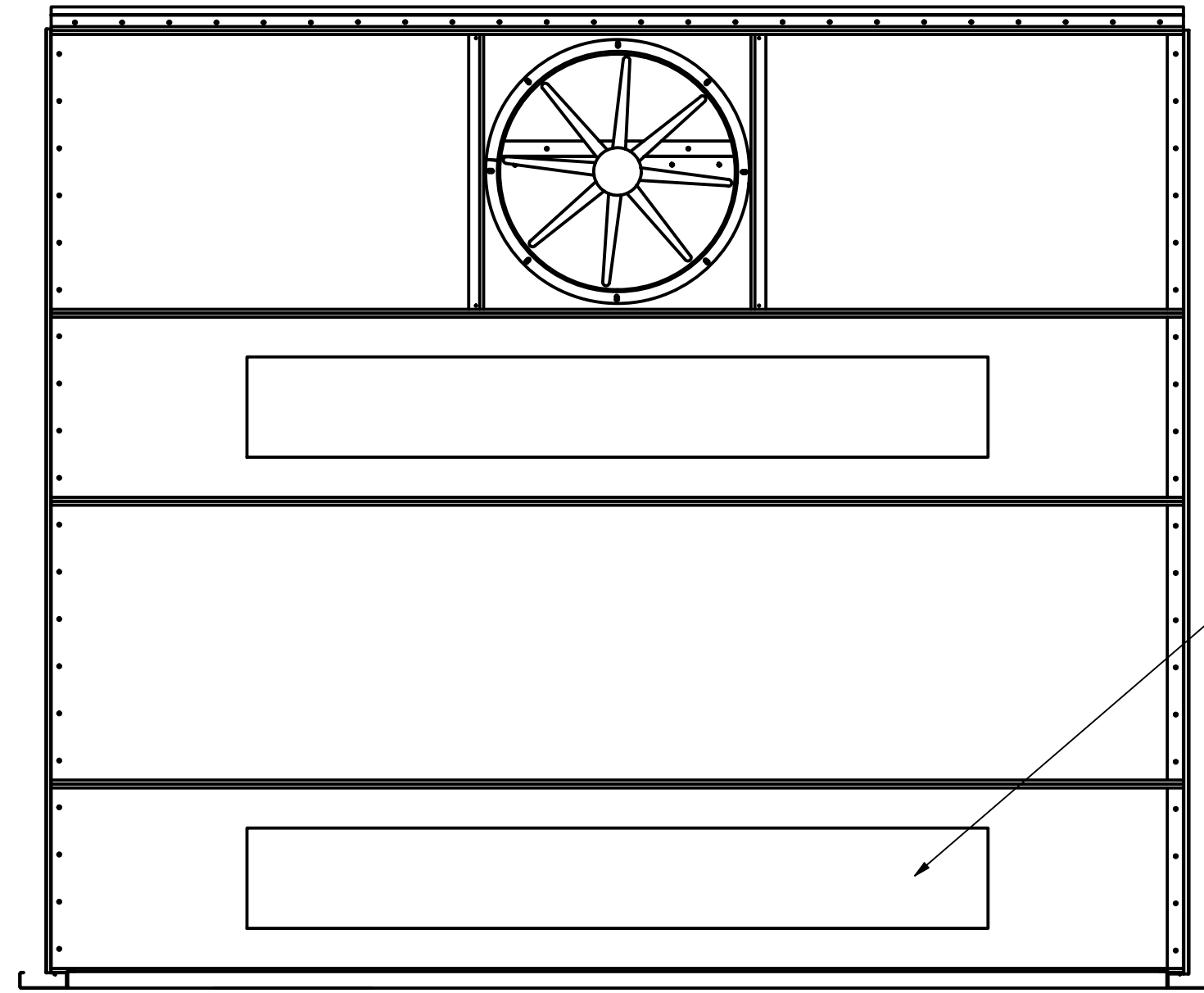


**THIS DOCUMENT CONTAINS CONFIDENTIAL AND PROPRIETARY INFORMATION THAT CANNOT BE REPRODUCED OR DIVULGED, IN WHOLE OR IN PART, WITHOUT WRITTEN AUTHORIZATION FROM RGI REFINISHING GROUP INC**

DRAWN	david	6/2/2021	<b>RGI SPRAY BOOTHS</b>	
CHECKED			TITLE	
QA			<b>OPEN FACE</b>	
MFG			<b>12W X 9H X 10DP 30" FAN</b>	
APPROVED			<b>VECTOR EXHAUST PLENUM</b>	
MATERIAL			SIZE	DWG NO
			D	OPEN FACE 12W X 9H X 10DP 30" FAN
			SCALE	1 / 18
				SHEET 1 OF 1

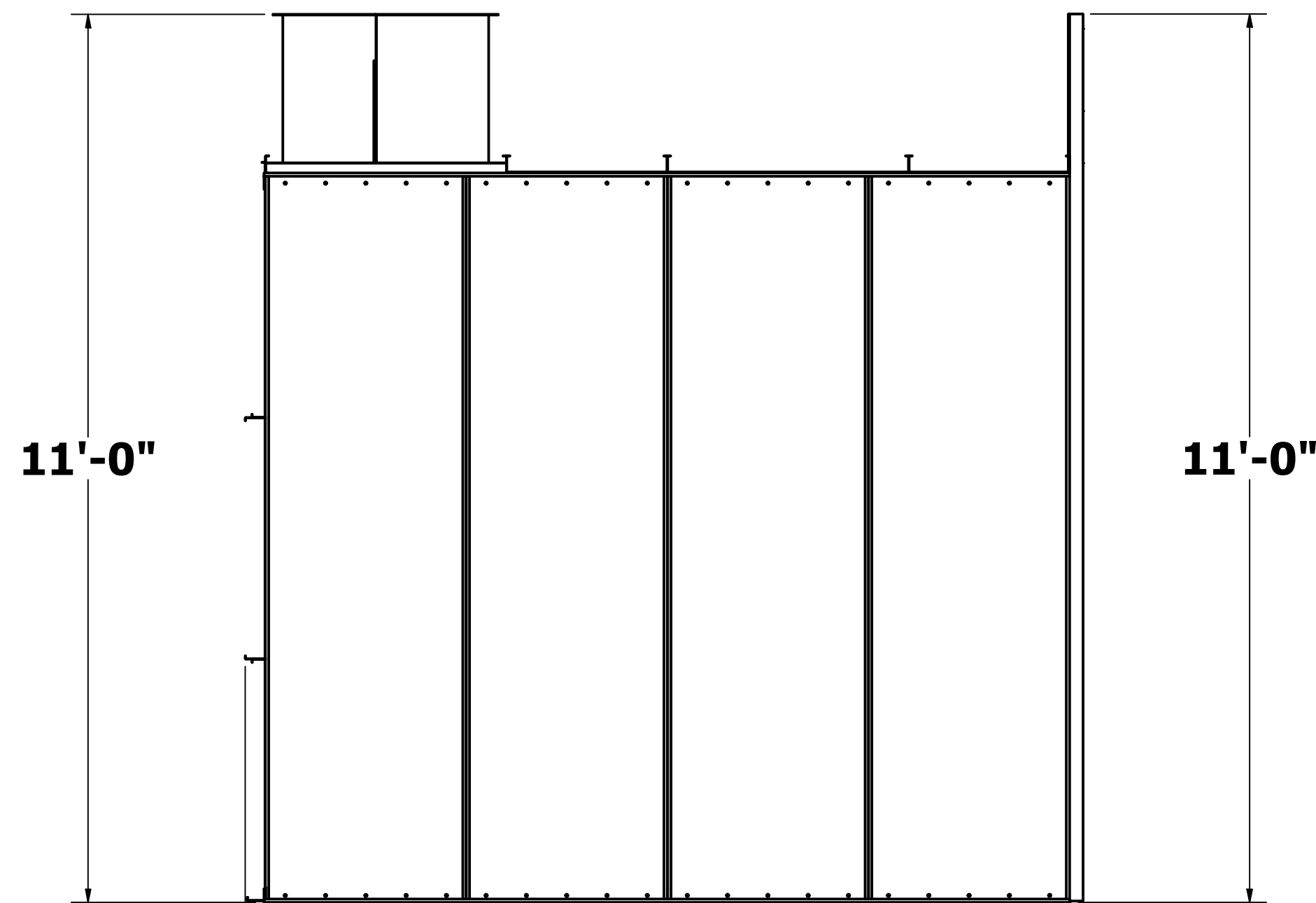
THIS DOCUMENT CONTAINS CONFIDENTIAL AND PROPRIETARY INFORMATION THAT CANNOT BE REPRODUCED OR DIVULGED, IN WHOLE OR IN PART, WITHOUT WRITTEN AUTHORIZATION FROM RGI REFINISHING GROUP INC



(2) 8' RGI LED LIGHTS - 8 - 4' TUBES EACH

(16) 20" X 20" EXHAUST FILTERS

30" TUBEAXIAL FAN 3HP



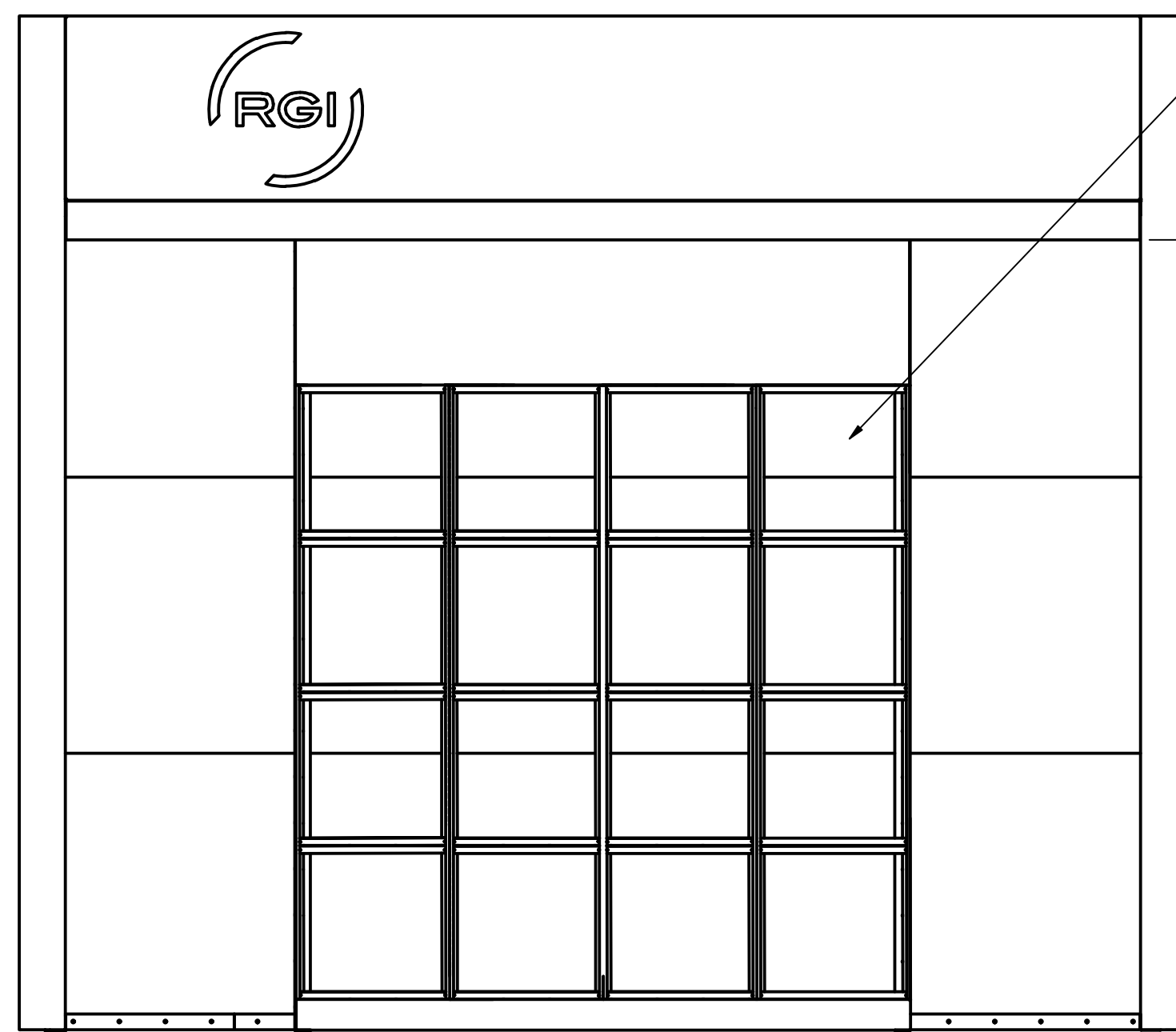
11'-0"

11'-0"

8'-8"  
WORK AREA

10'-2"  
INSIDE

10'-4"  
OUTSIDE



8'-6"

FLASH  
ARREST  
SHIELD

11'-8"  
INSIDE

12'-0"  
OUTSIDE

12'-8"  
OVERALL

9'-0"

CEILING

DRAWN	david	6/2/2021	<b>RGI SPRAY BOOTHS</b>	
CHECKED			TITLE	
QA			<b>OPEN FACE</b>	
MFG			<b>12W X 9H X 10DP 30" FAN</b>	
APPROVED			<b>VECTOR EXHAUST PLENUM</b>	
MATERIAL			SIZE	DWG NO
			D	OPEN FACE 12W X 9H X 10DP 30" F
			SCALE	REV
			1/20	
			SHEET 1 OF 1	

8

7

6

5

4

3

2

1

8

7

6

5

4

3

2

1

D

D

C

C

B

B

A

A