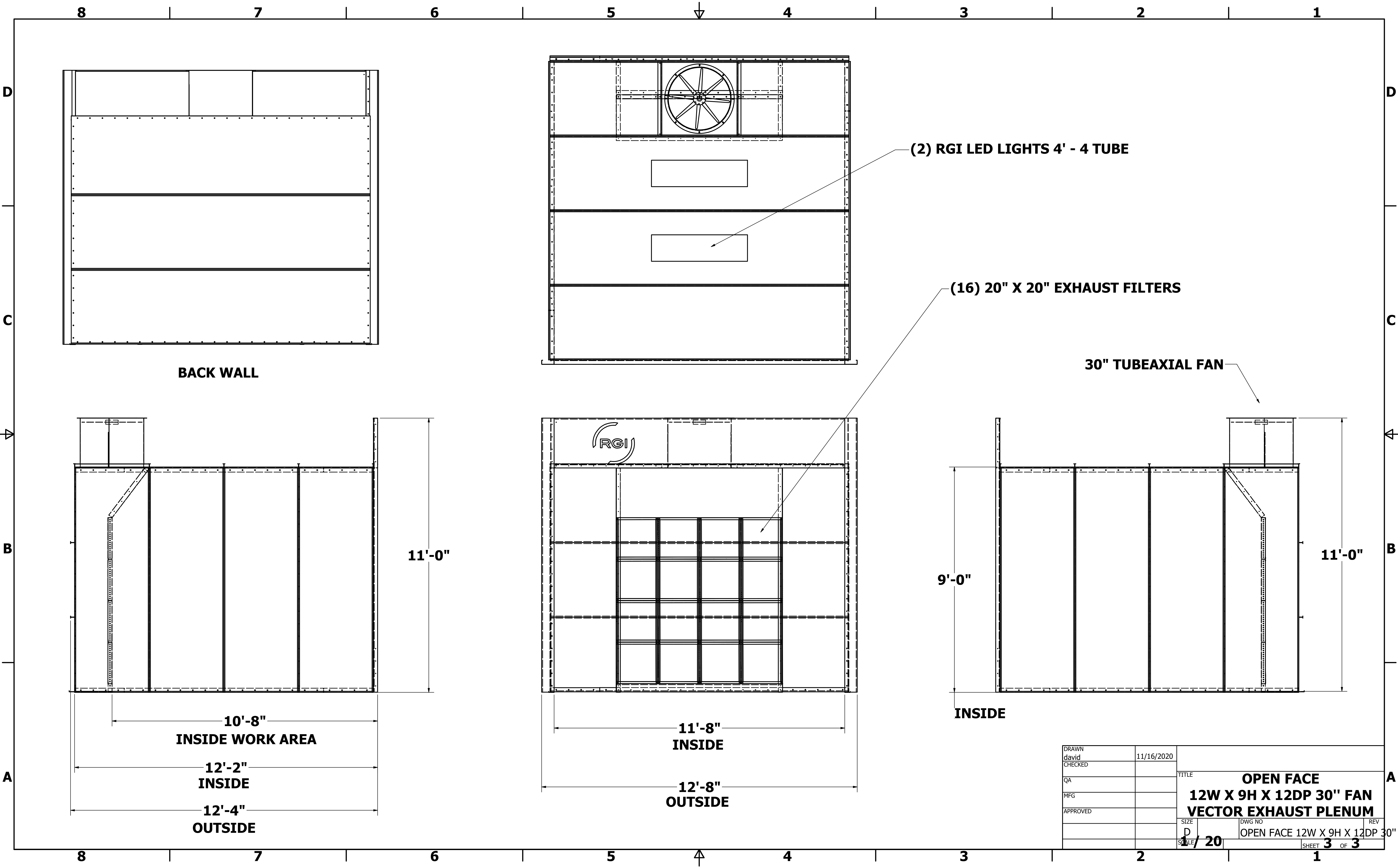


THIS DOCUMENT CONTAINS CONFIDENTIAL AND PROPRIETARY INFORMATION THAT CANNOT BE REPRODUCED OR DIVULGED, IN WHOLE OR IN PART, WITHOUT WRITTEN AUTHORIZATION FROM RGI REFINISHING GROUP INC

DRAWN	david	11/16/2020	RGI SPRAY BOOTHS	
CHECKED			TITLE	
QA			OPEN FACE	
MFG			12W X 9H X 12DP 30" FAN	
APPROVED			VECTOR EXHAUST PLENUM	
MATERIAL			SIZE	DWG NO
			D	OPEN FACE 12W X 9H X 12DP 30" FAN
			SCALE	1 / 18
				SHEET 1 OF 1



BACK WALL

(2) RGI LED LIGHTS 4' - 4 TUBE

(16) 20" X 20" EXHAUST FILTERS

30" TUBEAXIAL FAN

**10'-8"
INSIDE WORK AREA**

**12'-2"
INSIDE**

**12'-4"
OUTSIDE**

11'-0"

**11'-8"
INSIDE**

**12'-8"
OUTSIDE**

9'-0"

11'-0"

INSIDE

DRAWN	david	11/16/2020	TITLE	OPEN FACE 12W X 9H X 12DP 30" FAN VECTOR EXHAUST PLENUM	
CHECKED			SIZE	D	REV
QA			DWG NO		
MFG			SCALE	1/20	
APPROVED			SHEET	3	OF 3