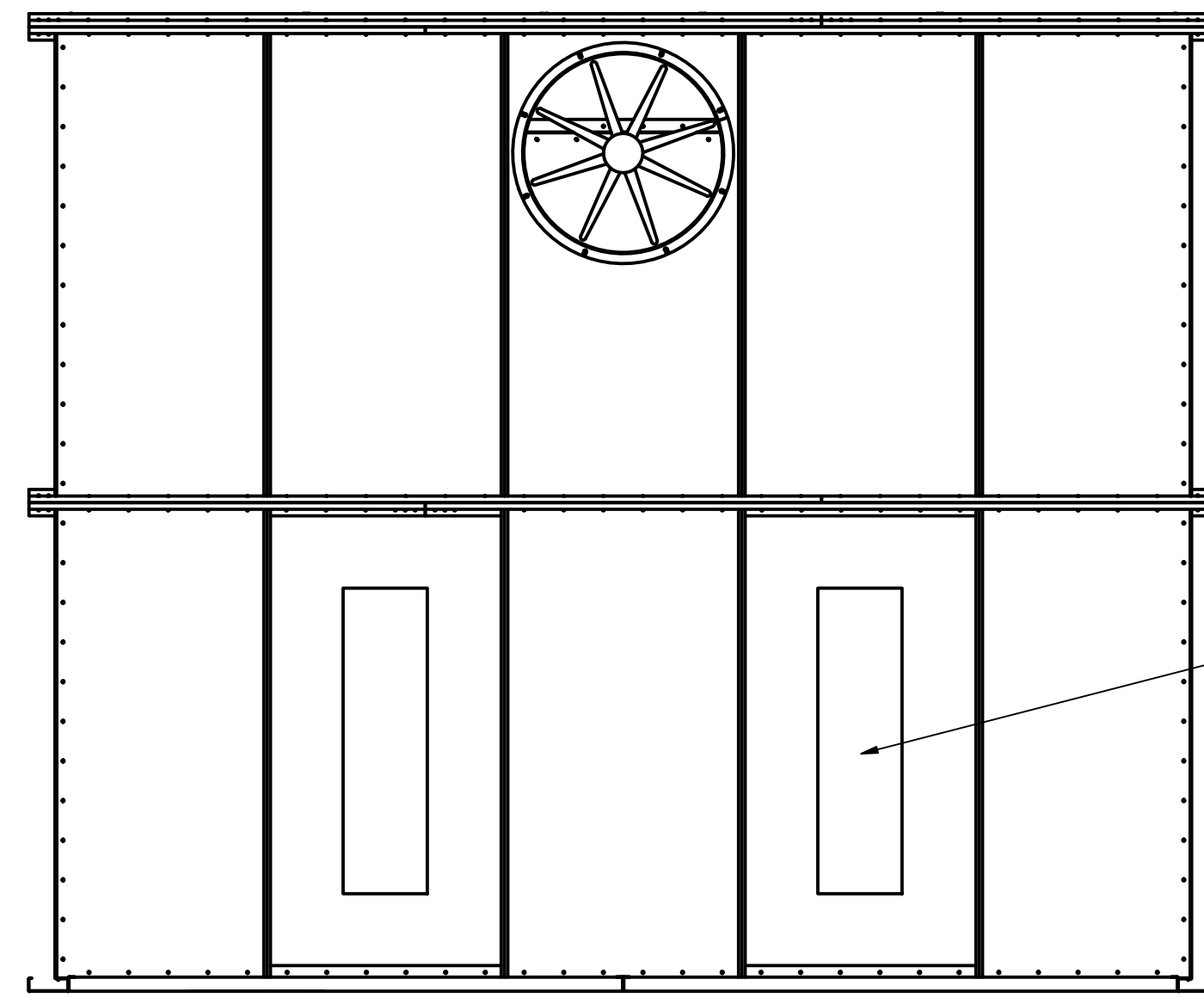


THIS DOCUMENT CONTAINS CONFIDENTIAL AND PROPRIETARY INFORMATION THAT CANNOT BE REPRODUCED OR DIVULGED, IN WHOLE OR IN PART, WITHOUT WRITTEN AUTHORIZATION FROM RGI REFINISHING GROUP INC

DRAWN	david	6/4/2021	RGI SPRAY BOOTHS	
CHECKED			TITLE	
QA			OPEN FACE	
MFG			14W X 9H X 12DP 30" FAN	
APPROVED			VECTOR EXHAUST PLENUM	
MATERIAL			SIZE	DWG NO
			D	OPEN FACE 14W X 9H X 12DP 30" F
			SCALE	1 / 18
				SHEET 1 OF 1

THIS DOCUMENT CONTAINS CONFIDENTIAL AND PROPRIETARY INFORMATION THAT CANNOT BE REPRODUCED OR DIVULGED, IN WHOLE OR IN PART, WITHOUT WRITTEN AUTHORIZATION FROM RGI REFINISHING GROUP INC

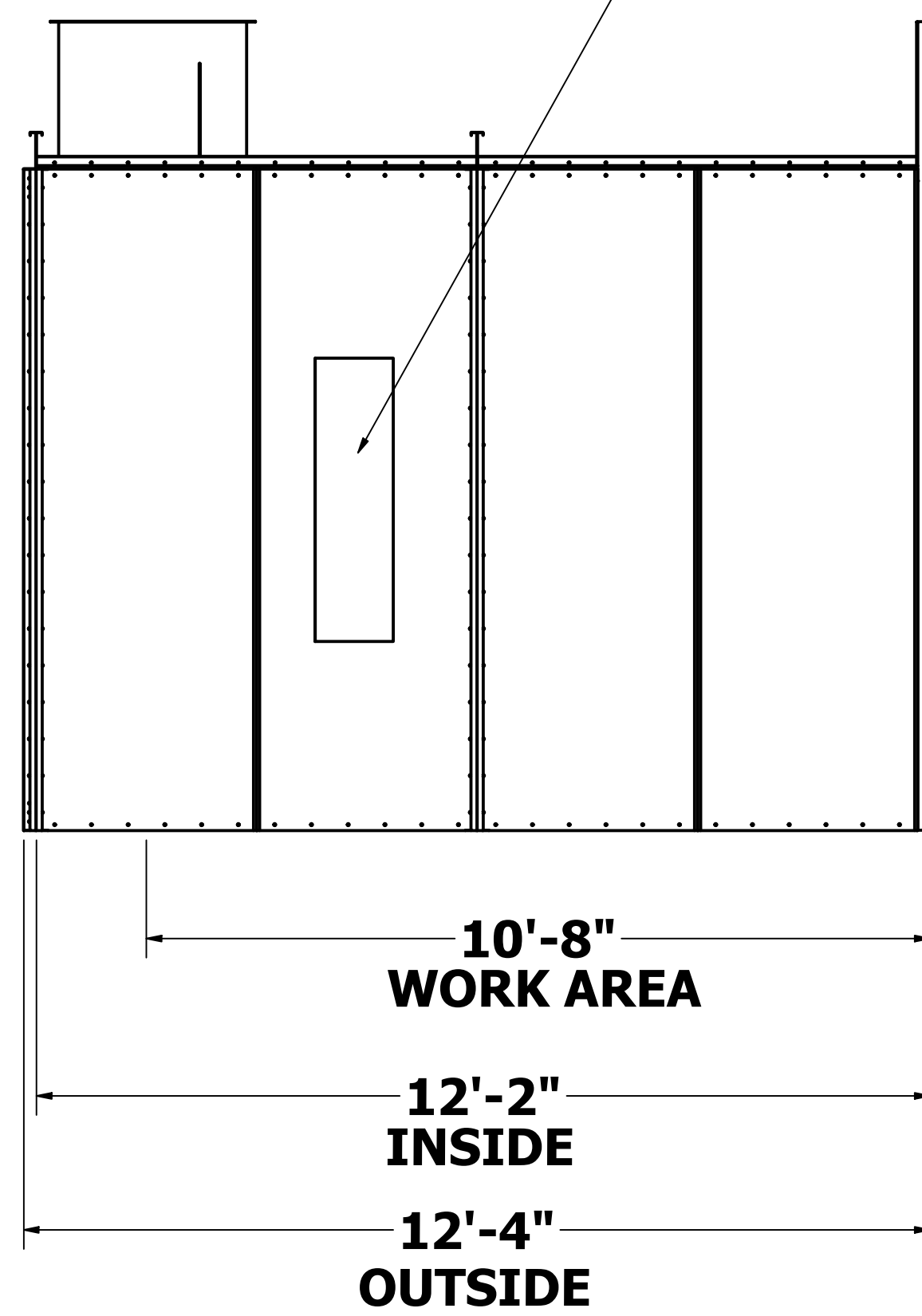


**(2) CEILING LIGHTS - RGI LED LIGHTS
4' - 4 LED TUBES EACH**

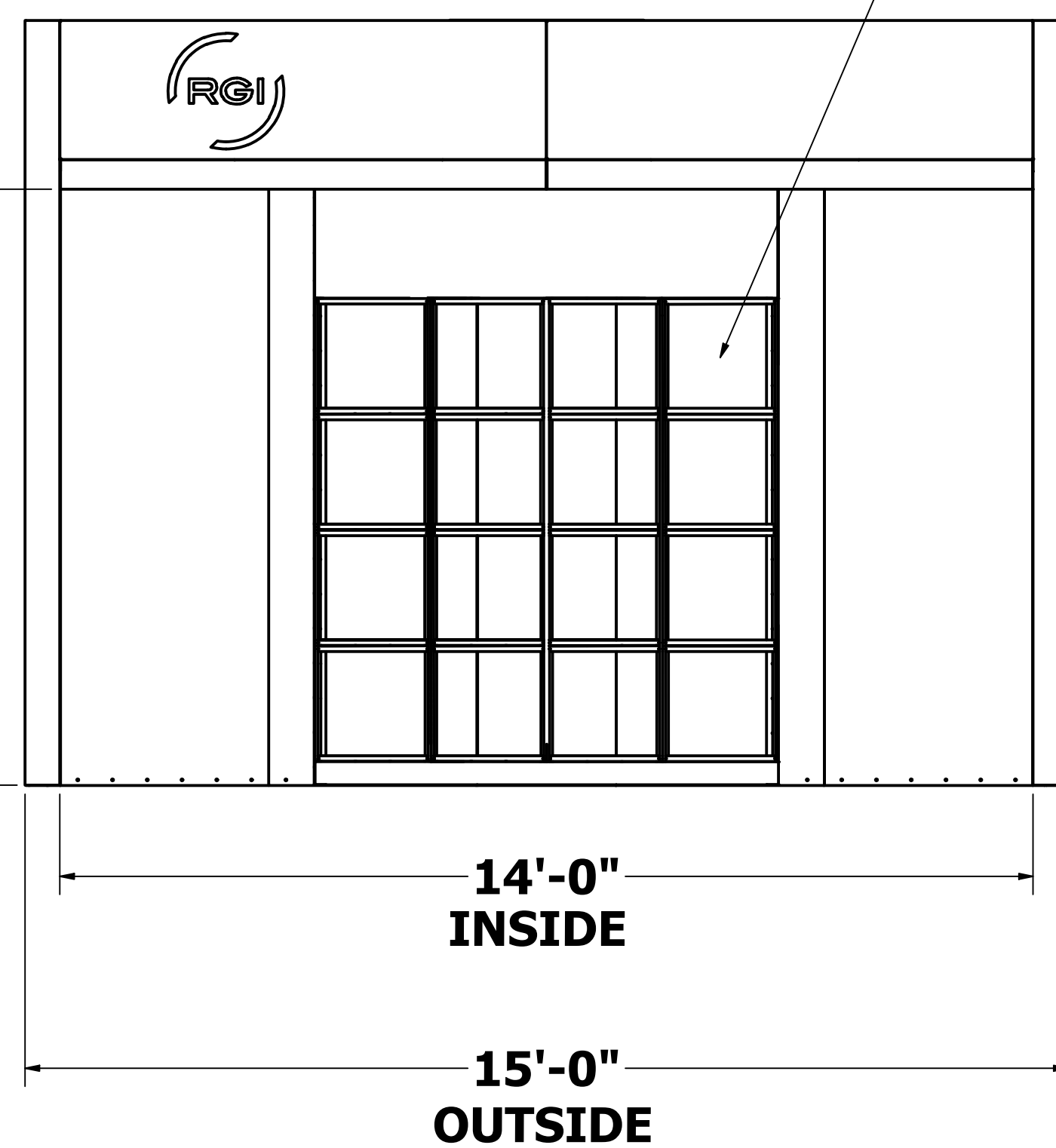
30" TUBEAXIAL EXHAUST FAN 3 HP

**(2) WALL LIGHTS - RGI LED LIGHTS
4' - 4 LED TUBES EACH**

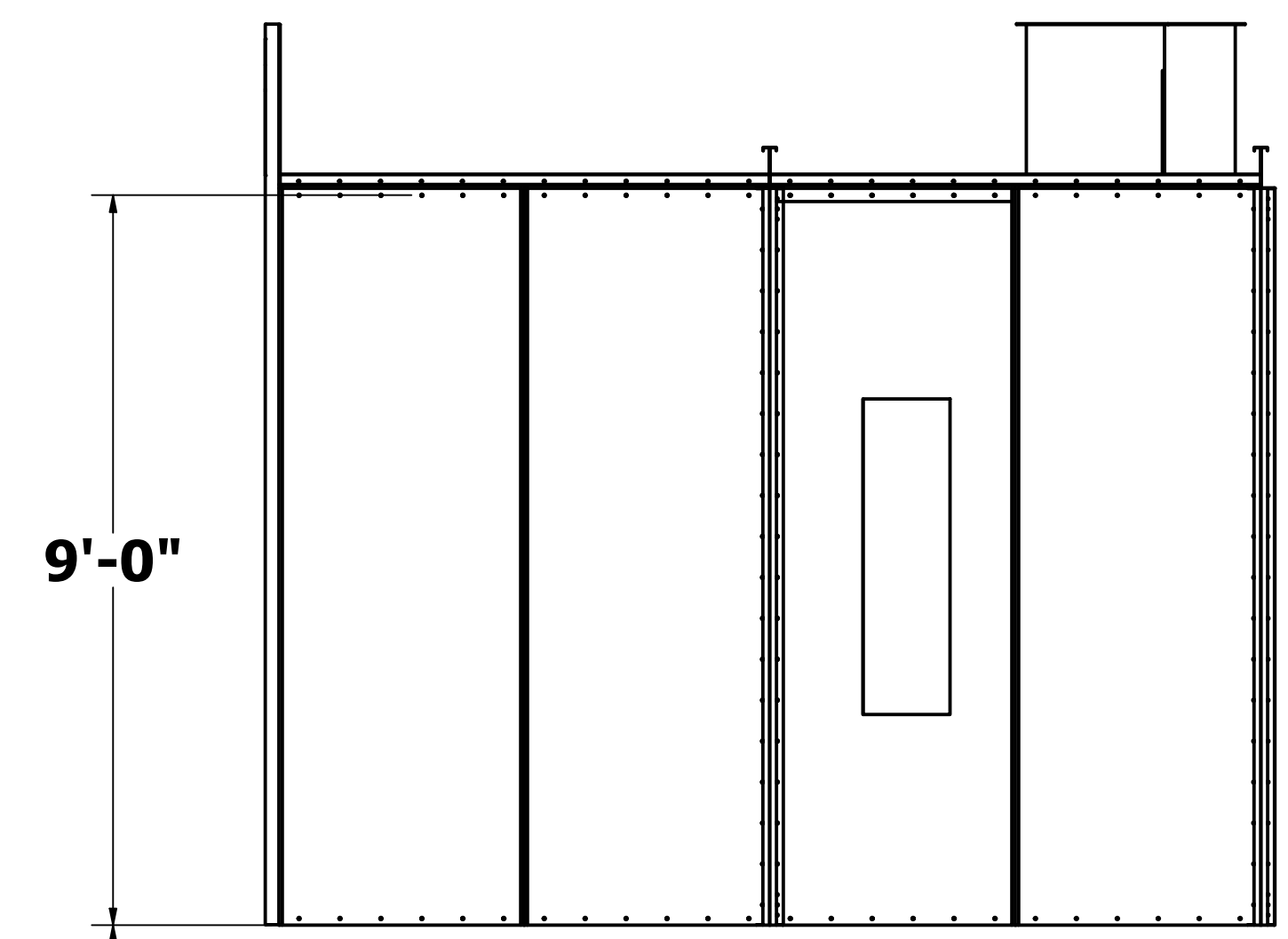
(16) 20" X 20" EXHAUST FILTERS



FLASH ARREST SHIELD



CEILING



DRAWN	david	6/4/2021	RGI SPRAY BOOTHS	
CHECKED			TITLE	
QA			OPEN FACE	
MFG			14W X 9H X 12DP 30" FAN	
APPROVED			VECTOR EXHAUST PLENUM	
MATERIAL			SIZE	DWG NO
			D	OPEN FACE 14W X 9H X 12DP 30" FAN
			SCALE	REV
			1/25	1
				SHEET 1 OF 1