

8 7 6 5 4 3 2 1

D

D

C

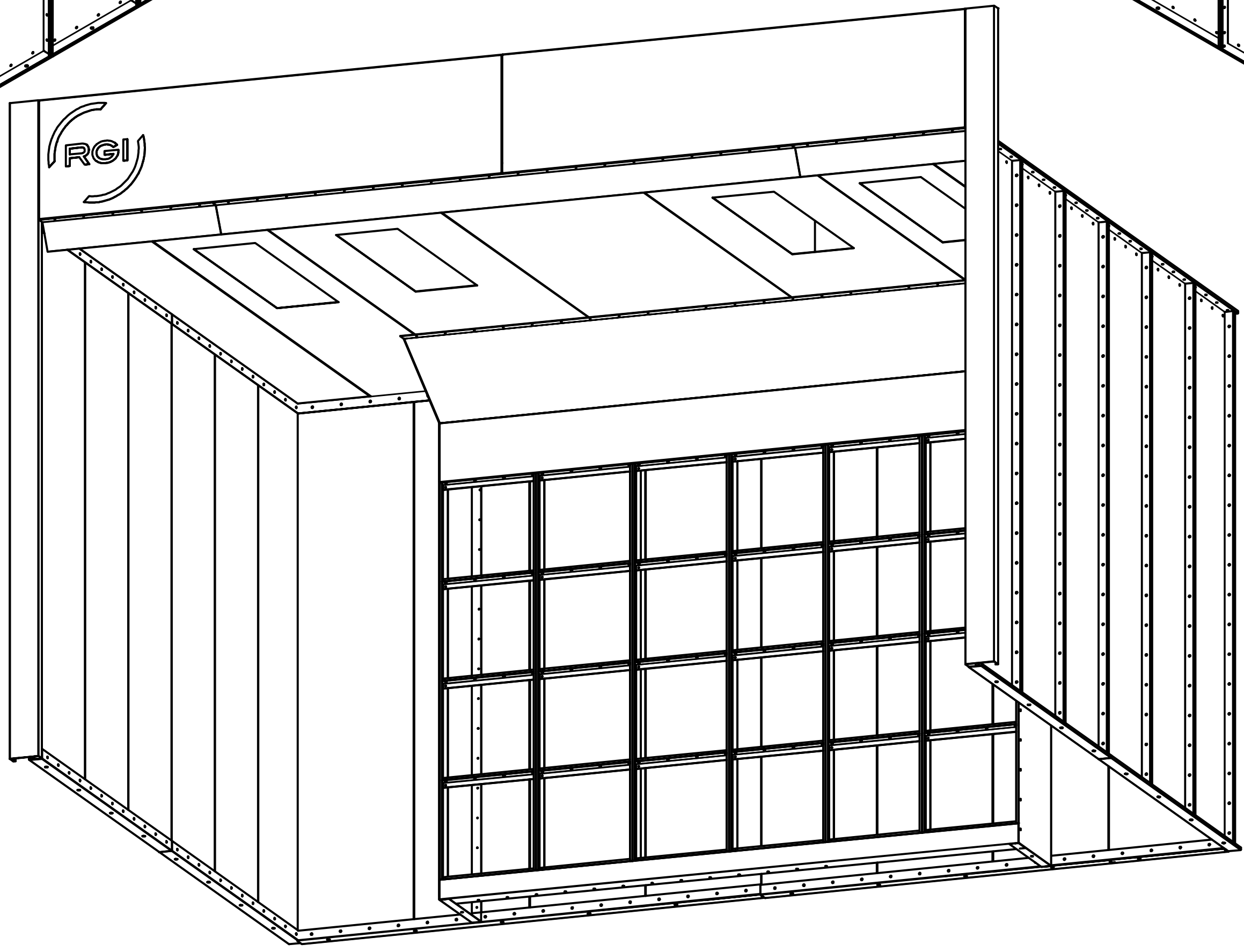
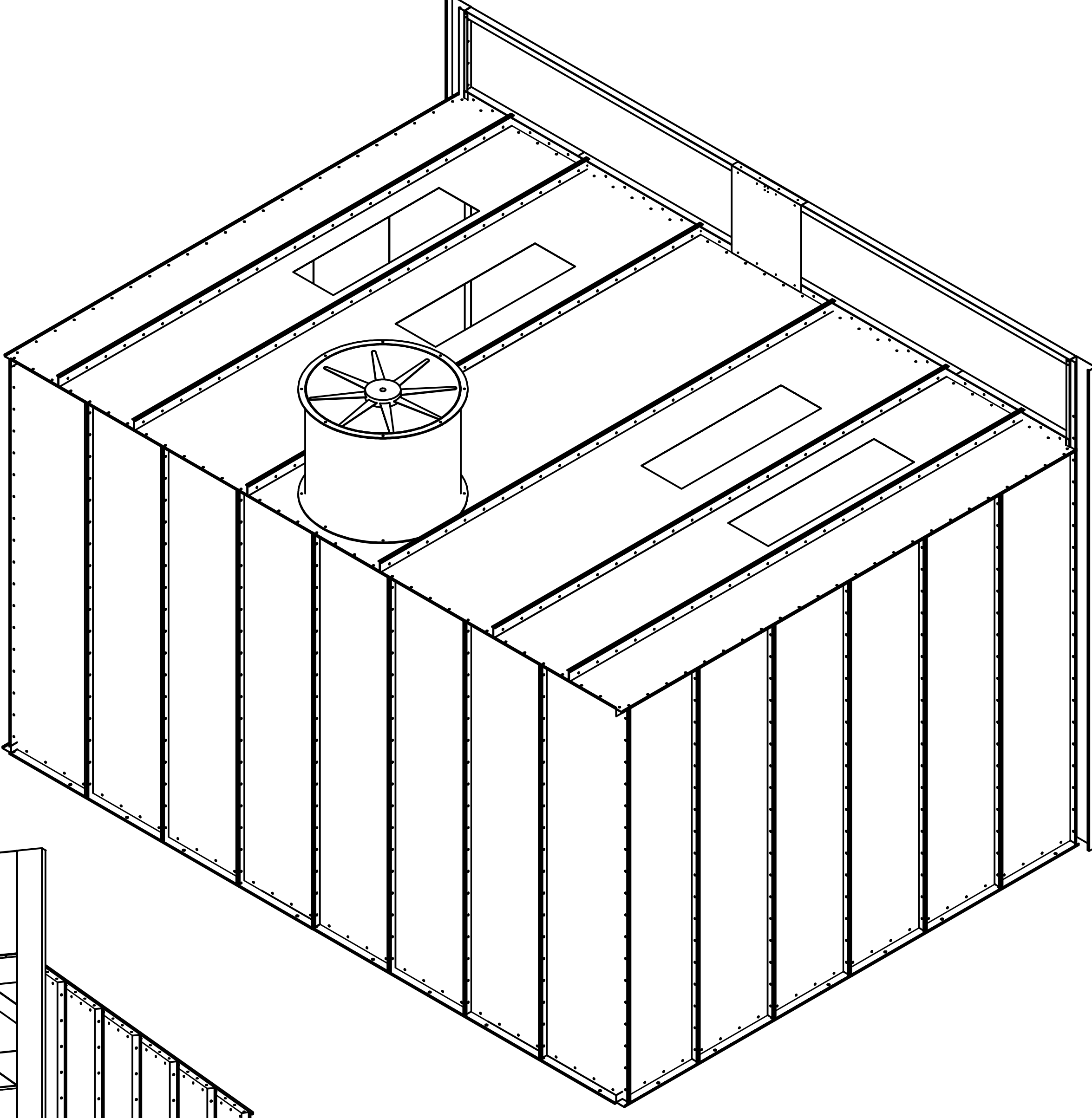
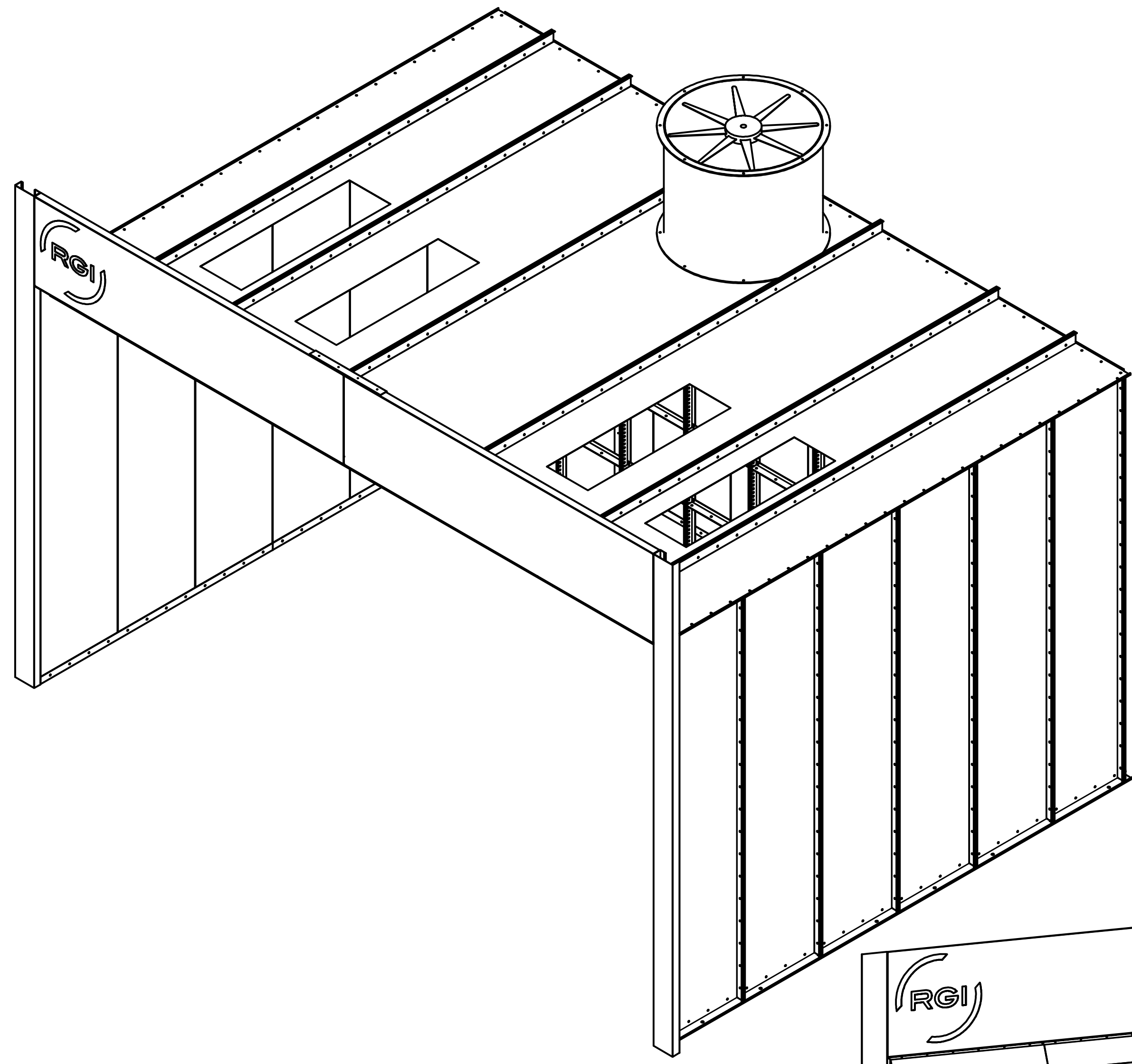
C

B

B

A

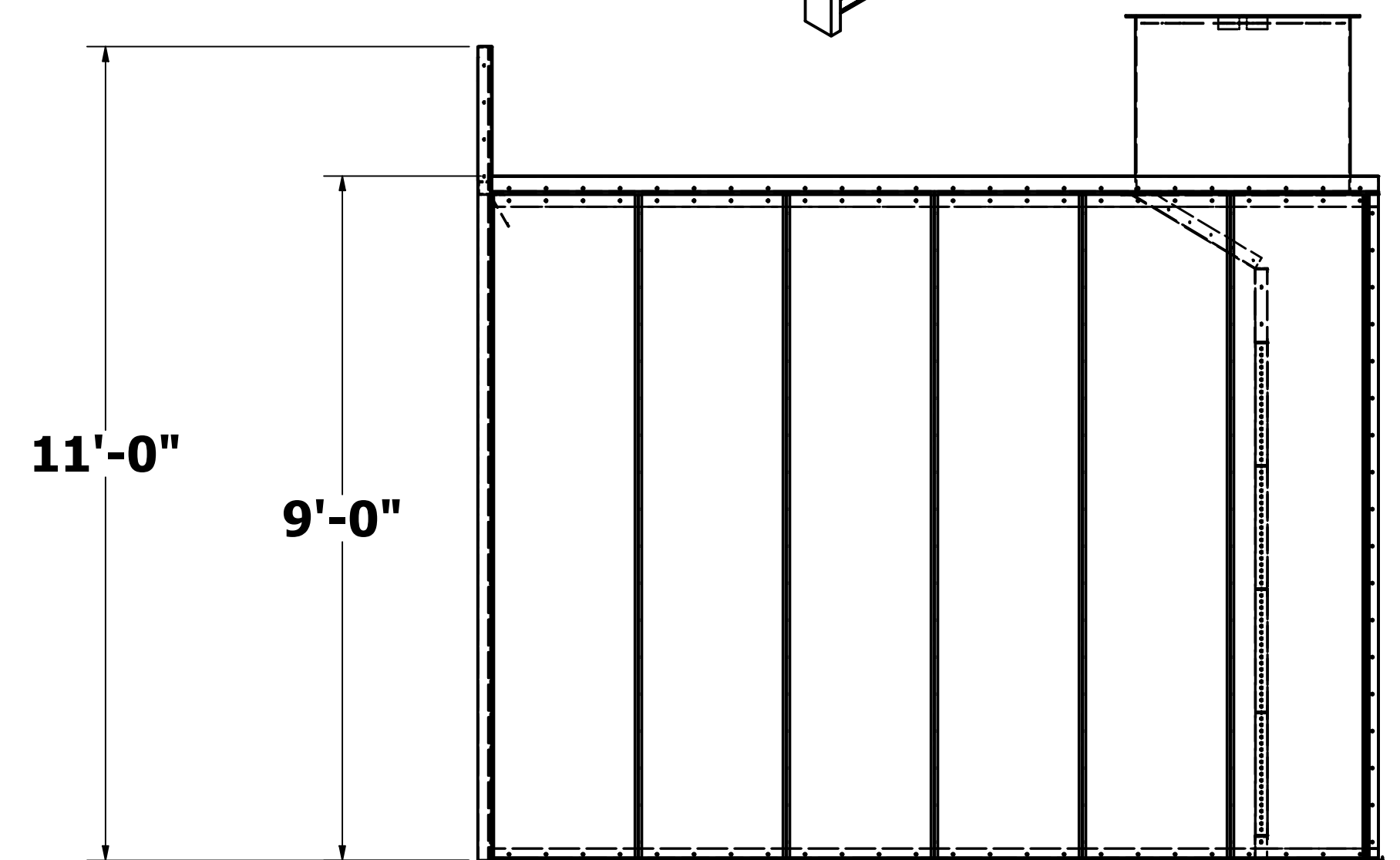
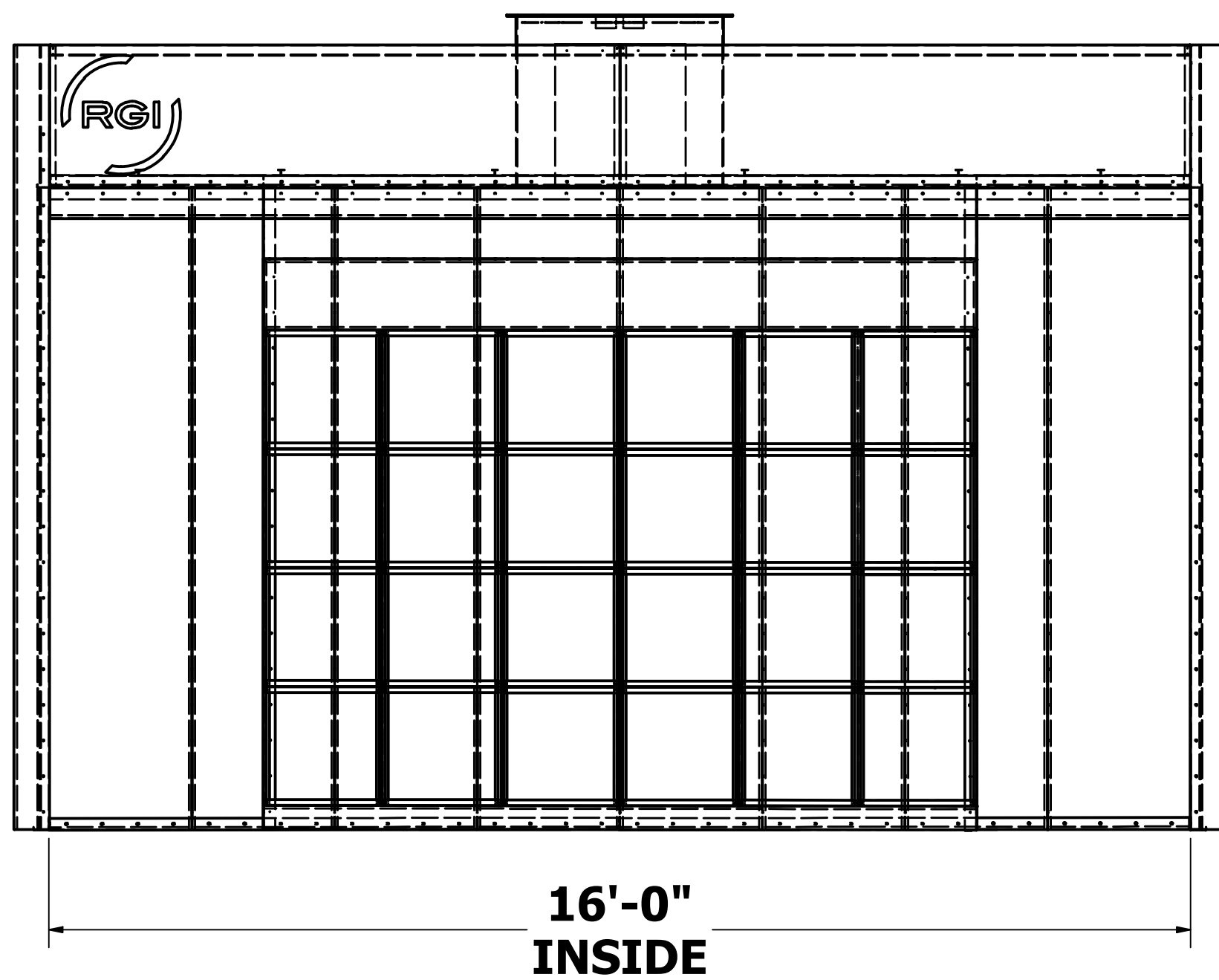
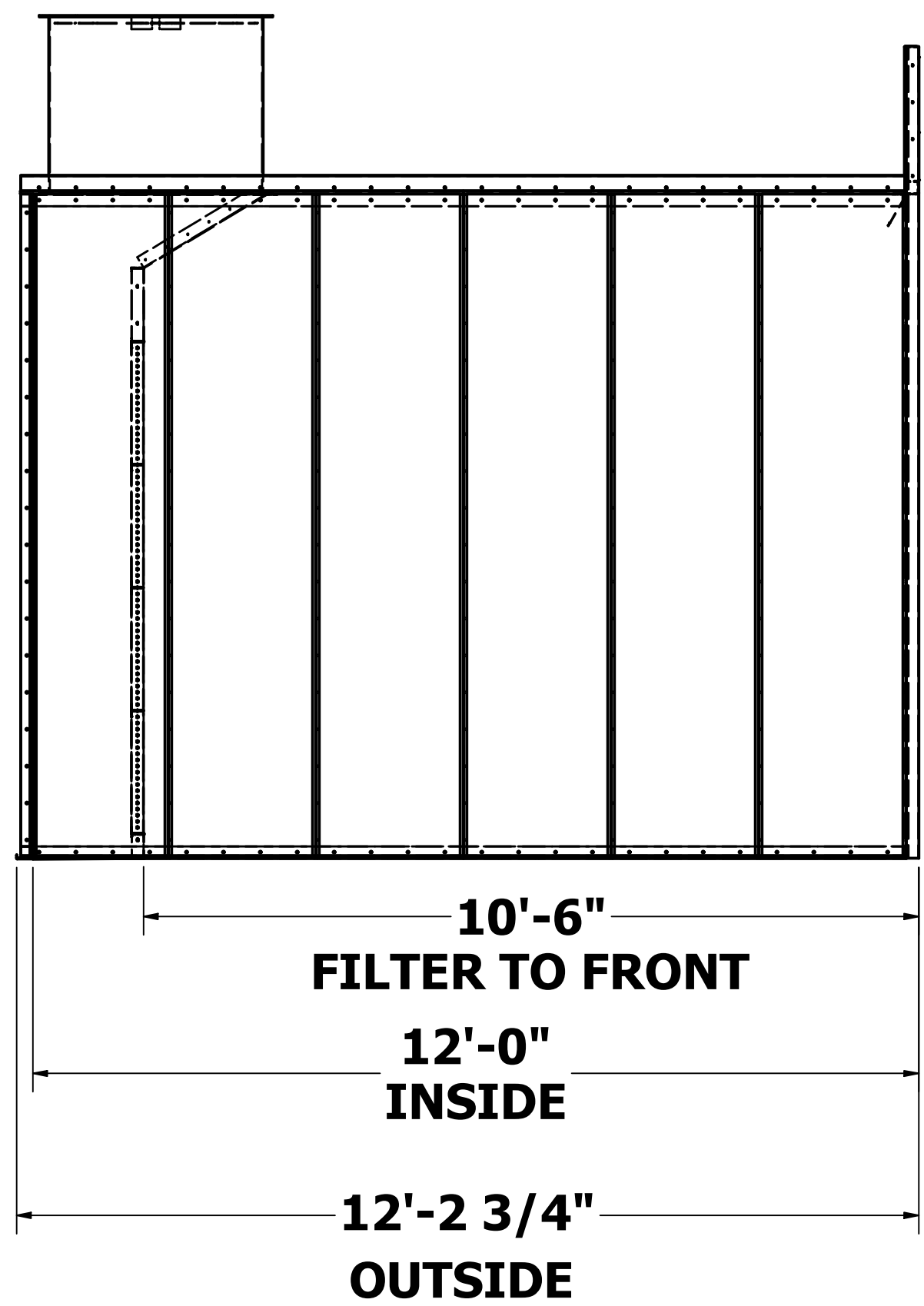
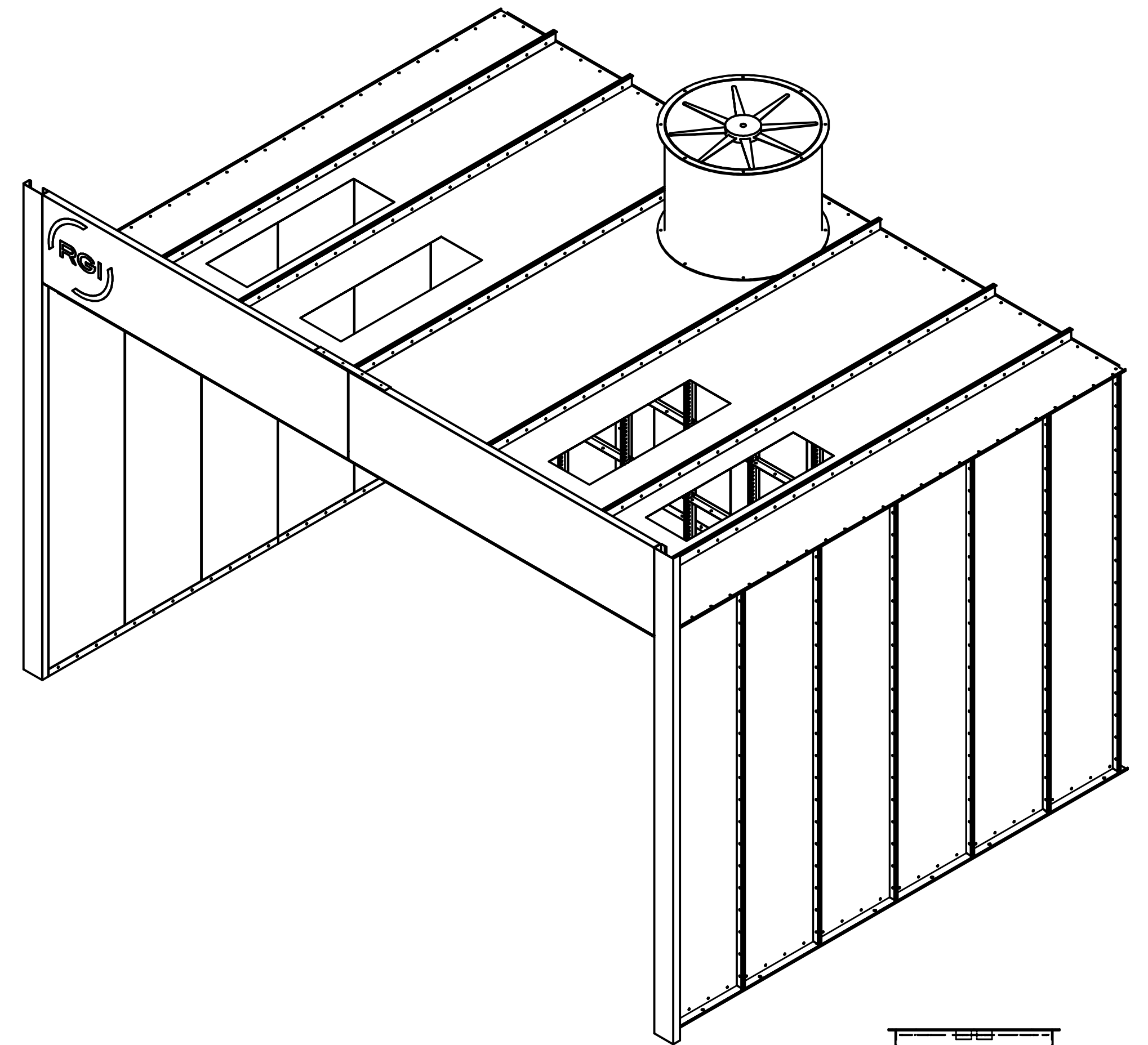
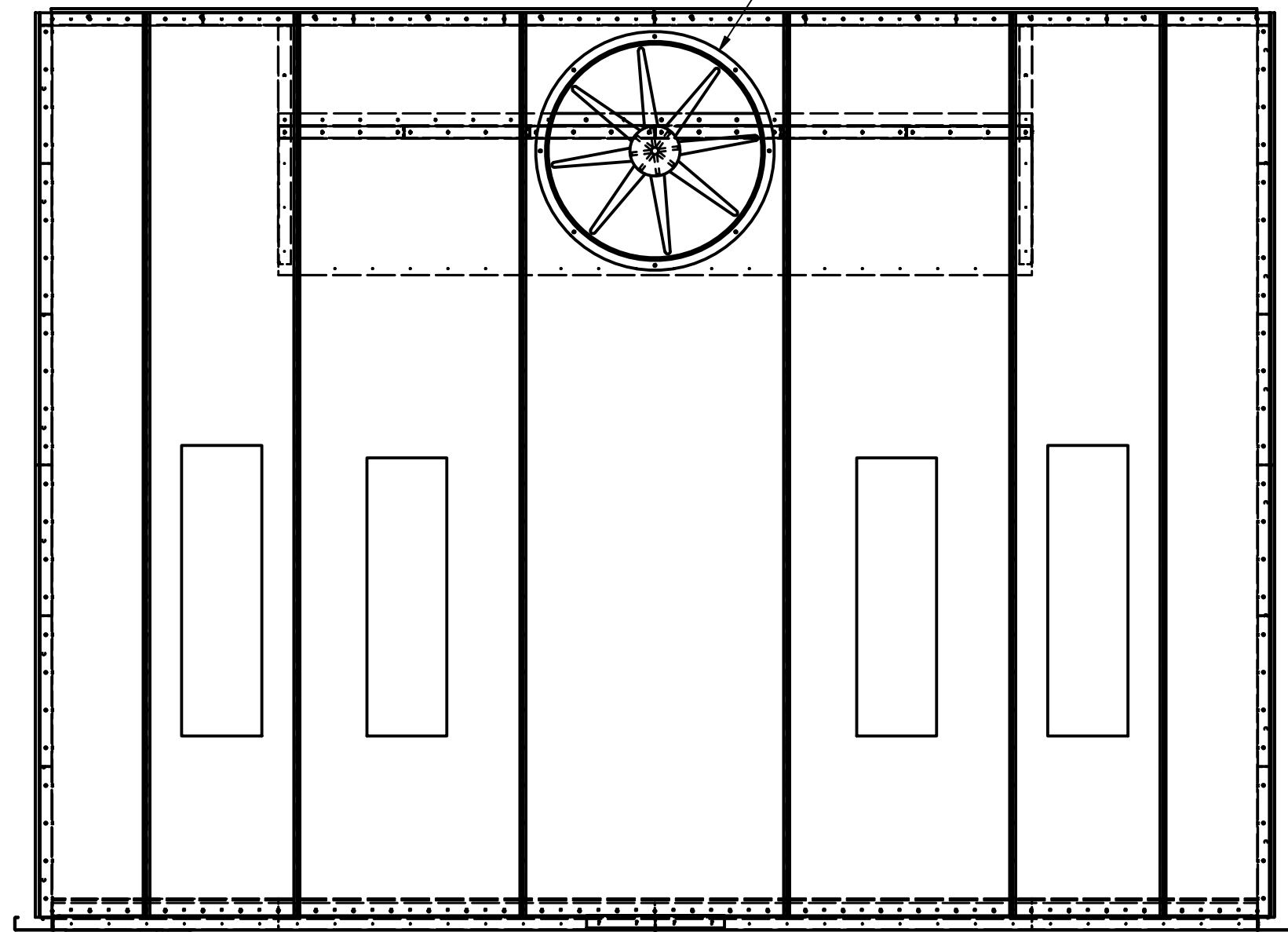
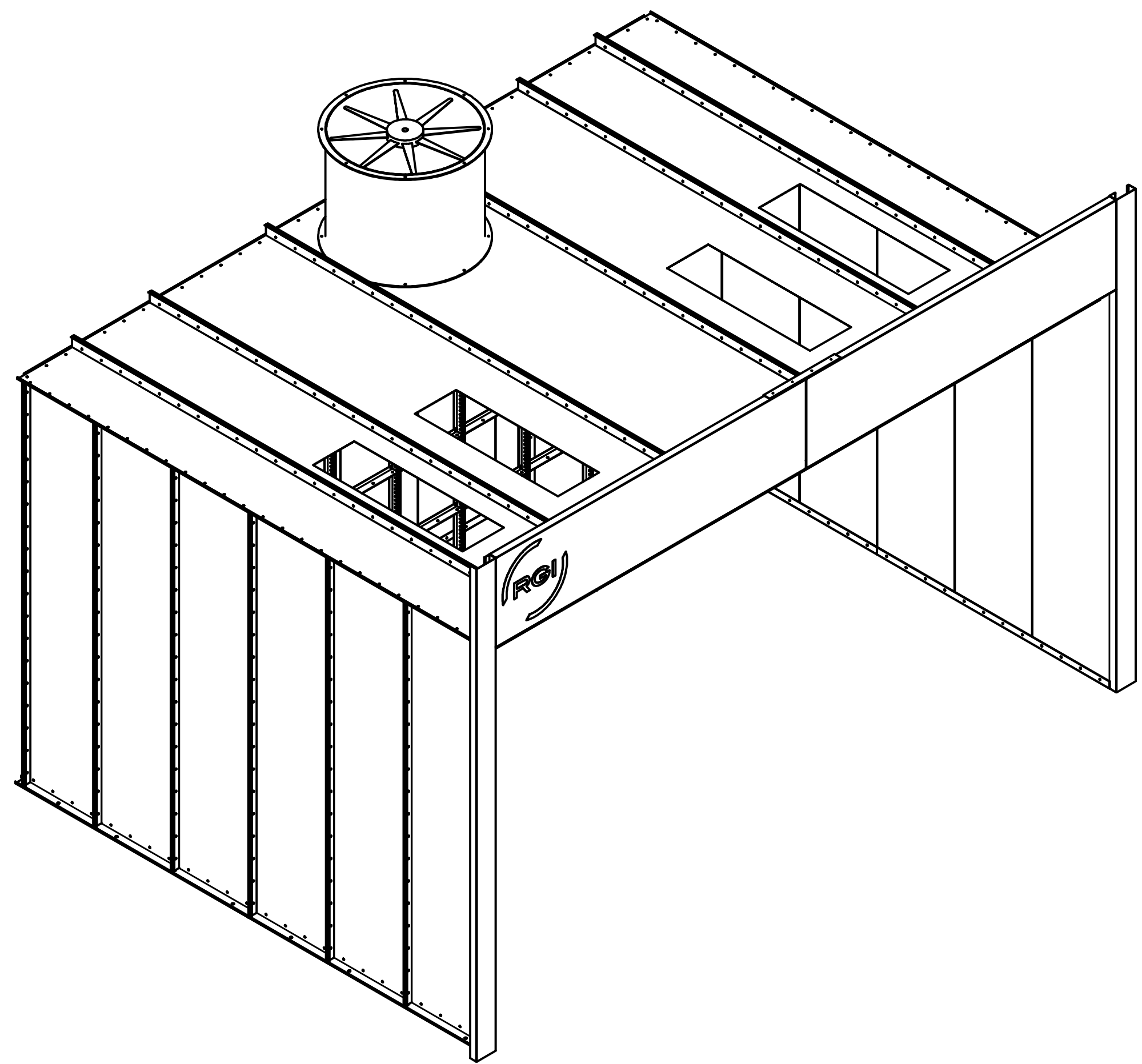
A



IN COLLABORATION WITH  Guffey Systems

DRAWN Emmanuel H	6/2/2022	RGI SPRAY BOOTHS	
CHECKED		TITLE	
QA		<b>OPEN FACE</b>	
MFG		<b>16'W X 12'L X 9'H</b>	
APPROVED		SIZE	DWG NO
		D	OPEN FACE 16'W X 12'L X 9'H
		SCALE	REV
		0.05	1 OF 6
			SHEET 1 OF 6

8 7 6 5 4 3 2 1



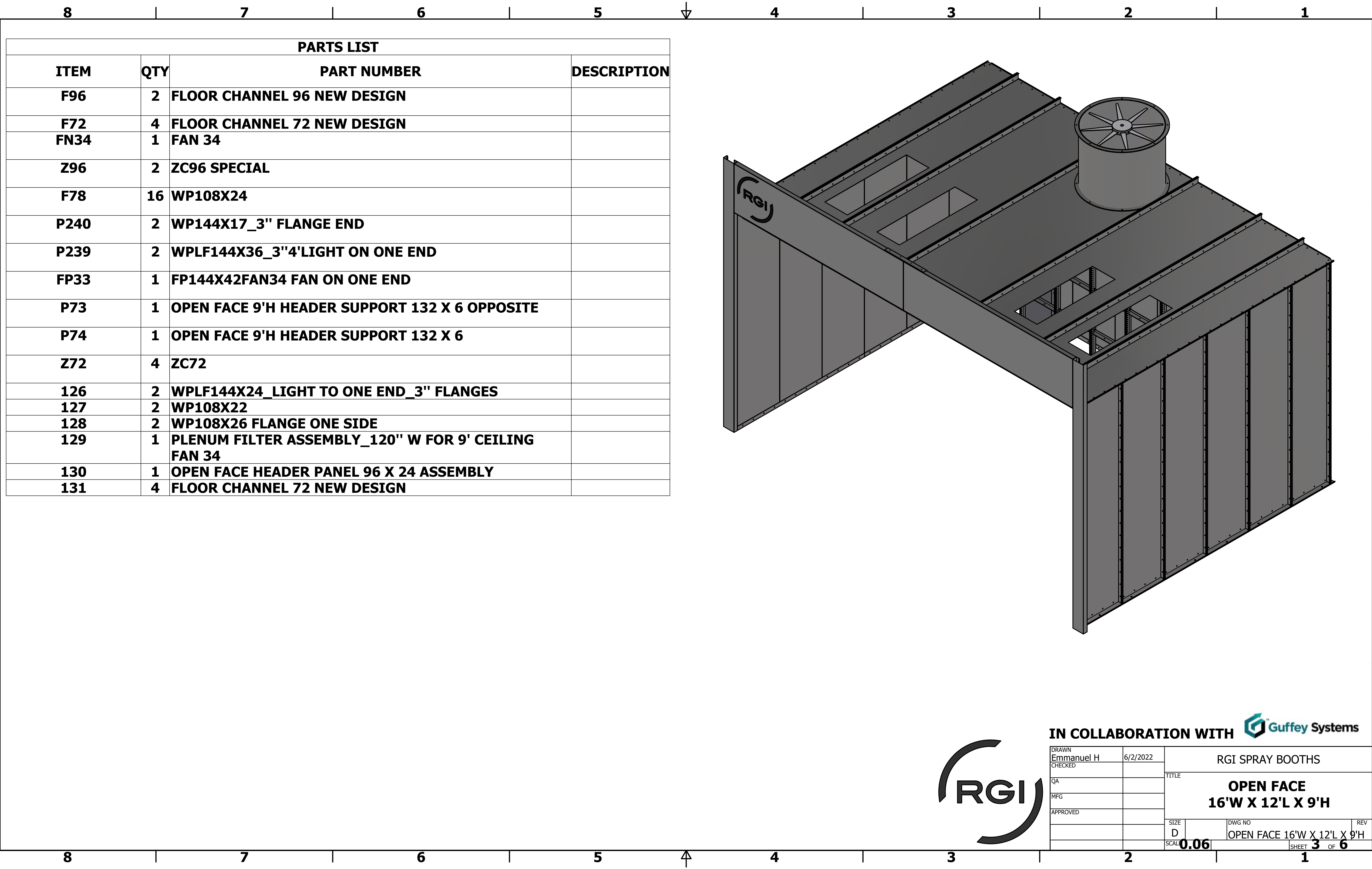
THIS DOCUMENT CONTAINS CONFIDENTIAL AND PROPRIETARY INFORMATION THAT CANNOT BE REPRODUCED OR DIVULGED, IN WHOLE OR IN PART, WITHOUT WRITTEN AUTHORIZATION FROM RGI SPRAY BOOTHS



IN COLLABORATION WITH  Guffey Systems

DRAWN Emmanuel H	6/2/2022	RGI SPRAY BOOTHS	
CHECKED		TITLE	
QA		<b>OPEN FACE</b> <b>16'W x 12'DP x 9'H</b>	
MFG			
APPROVED		SIZE D	DWG NO OPEN FACE 16'W X 12'L X 9'H
		SCALE 1/24	REV SHEET 2 OF 6





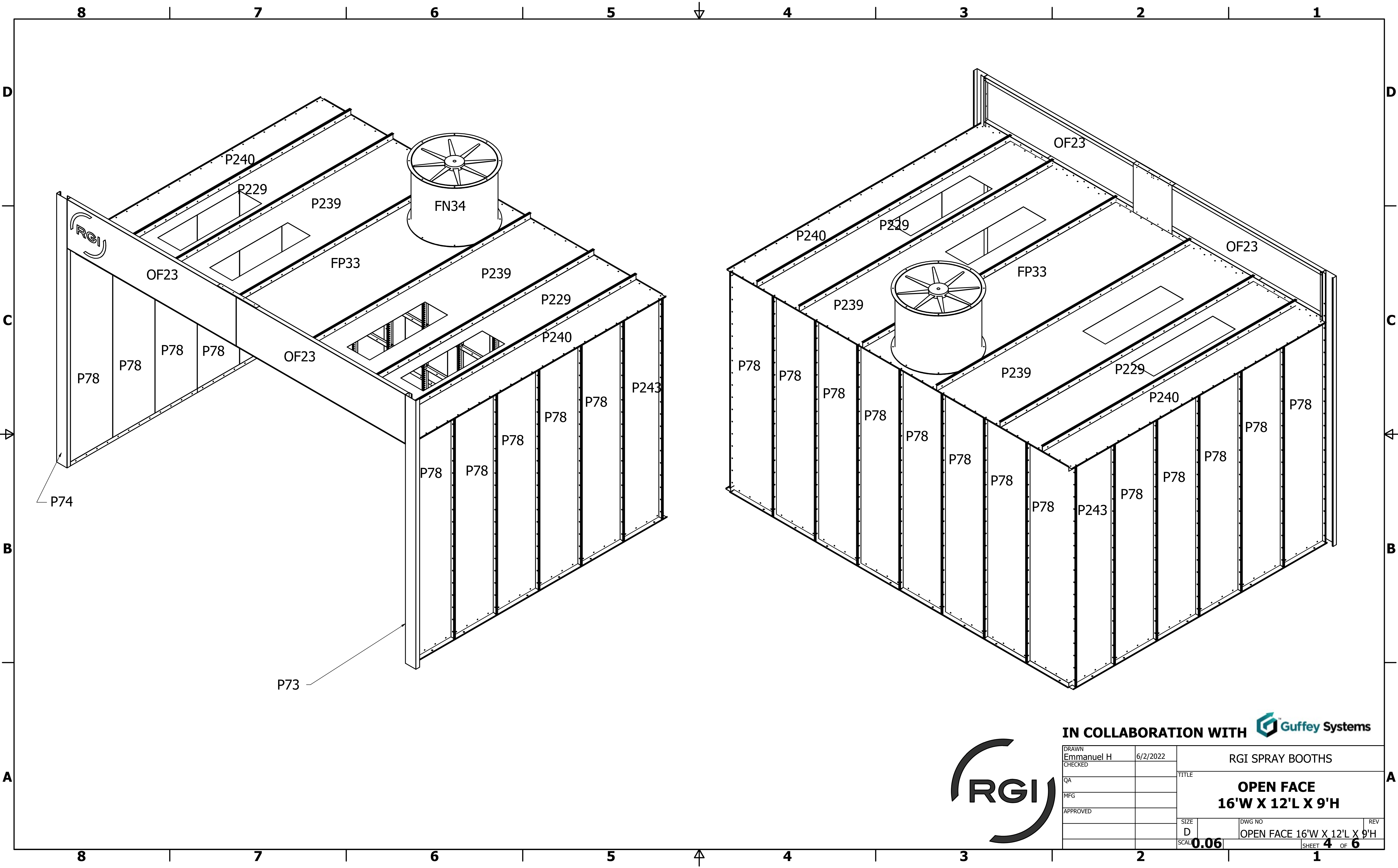
**PARTS LIST**

ITEM	QTY	PART NUMBER	DESCRIPTION
F96	2	FLOOR CHANNEL 96 NEW DESIGN	
F72	4	FLOOR CHANNEL 72 NEW DESIGN	
FN34	1	FAN 34	
Z96	2	ZC96 SPECIAL	
F78	16	WP108X24	
P240	2	WP144X17_3" FLANGE END	
P239	2	WPLF144X36_3"4'LIGHT ON ONE END	
FP33	1	FP144X42FAN34 FAN ON ONE END	
P73	1	OPEN FACE 9'H HEADER SUPPORT 132 X 6 OPPOSITE	
P74	1	OPEN FACE 9'H HEADER SUPPORT 132 X 6	
Z72	4	ZC72	
126	2	WPLF144X24_LIGHT TO ONE END_3" FLANGES	
127	2	WP108X22	
128	2	WP108X26 FLANGE ONE SIDE	
129	1	PLENUM FILTER ASSEMBLY_120" W FOR 9' CEILING FAN 34	
130	1	OPEN FACE HEADER PANEL 96 X 24 ASSEMBLY	
131	4	FLOOR CHANNEL 72 NEW DESIGN	

IN COLLABORATION WITH 



DRAWN Emmanuel H	6/2/2022	RGI SPRAY BOOTHS	
CHECKED		TITLE	
QA		<b>OPEN FACE 16'W X 12'L X 9'H</b>	
MFG			
APPROVED		SIZE D	DWG NO
		SCALE 0.06	REV OPEN FACE 16'W X 12'L X 9'H
			SHEET 3 OF 6



IN COLLABORATION WITH  Guffey Systems



DRAWN Emmanuel H	6/2/2022	RGI SPRAY BOOTHS	
CHECKED		TITLE	
QA		<b>OPEN FACE 16'W X 12'L X 9'H</b>	
MFG			
APPROVED		SIZE D	DWG NO
		SCALE 0.06	REV
		SHEET 4 OF 6	



8 7 6 5 4 3 2 1

D

D

C

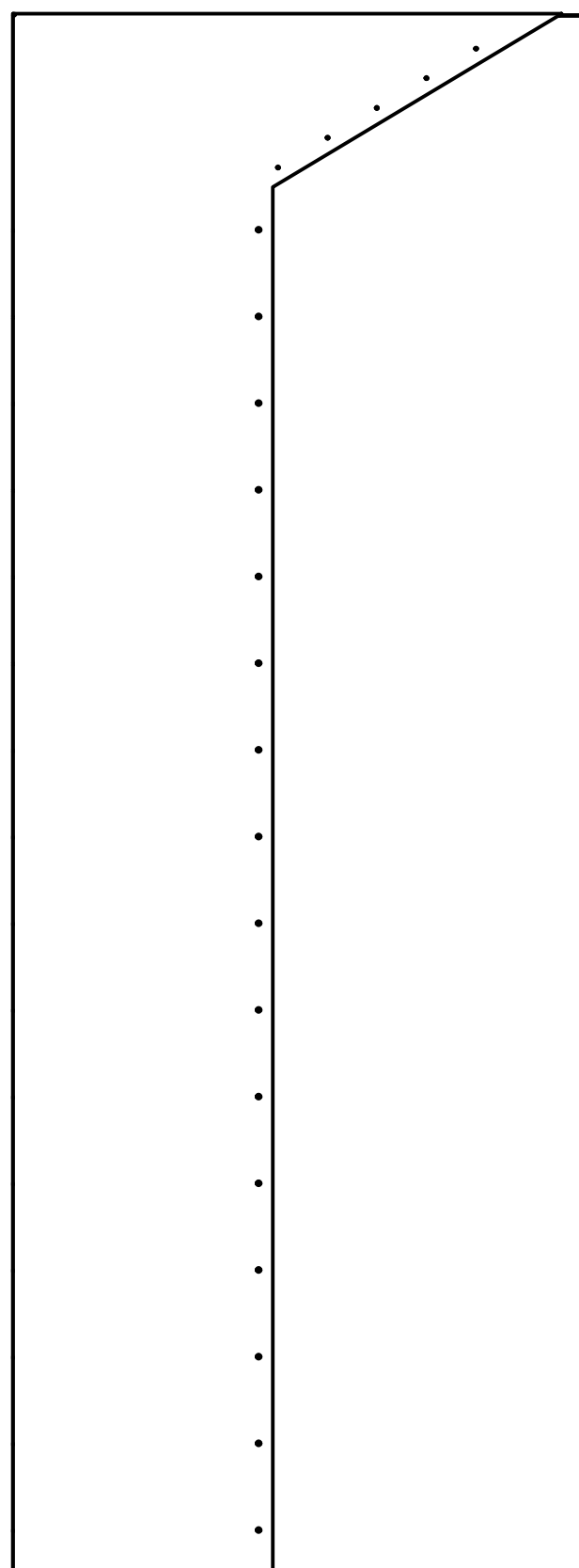
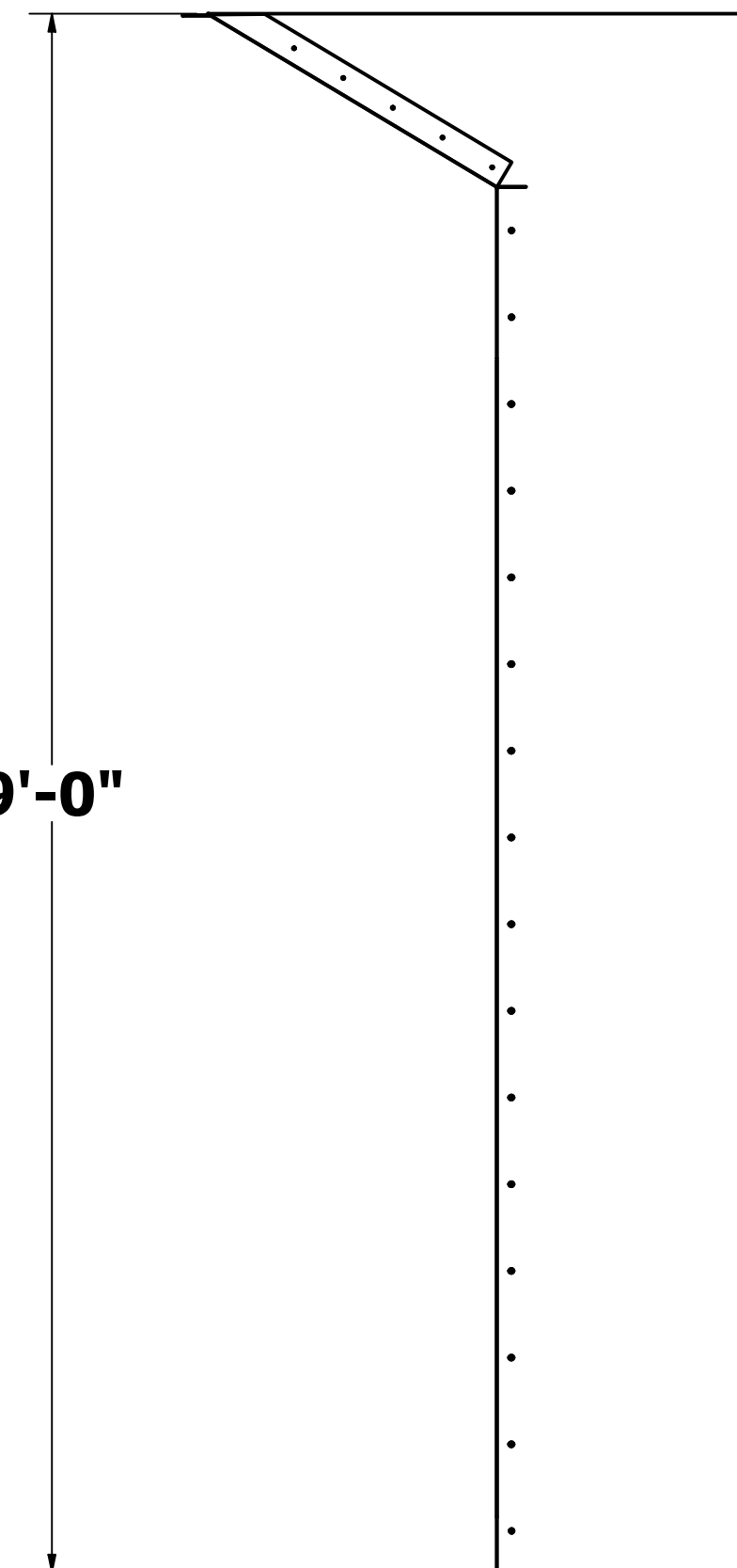
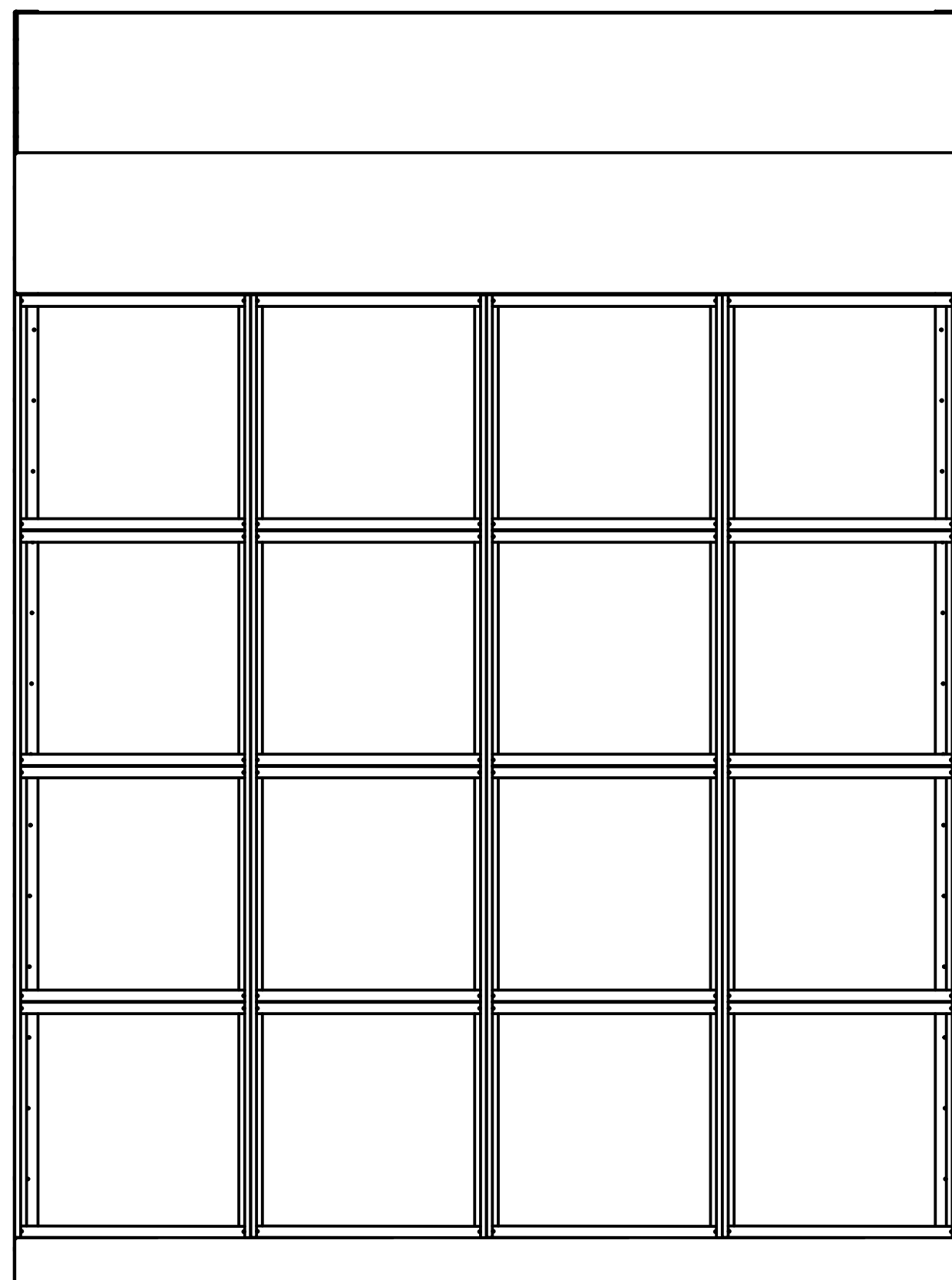
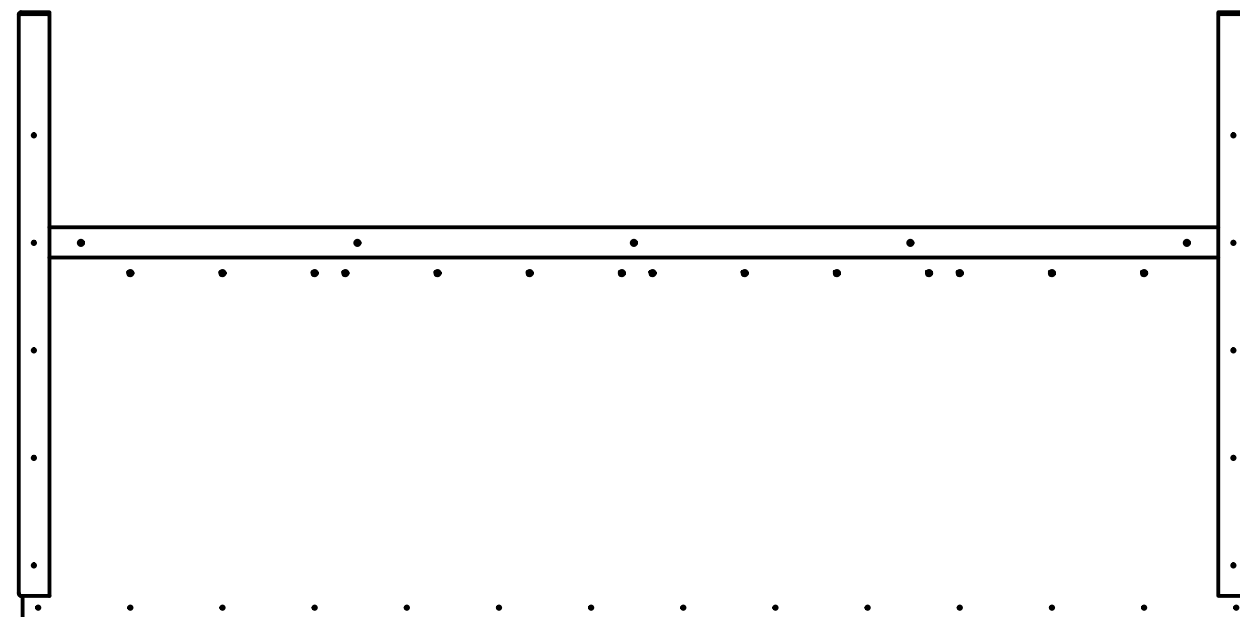
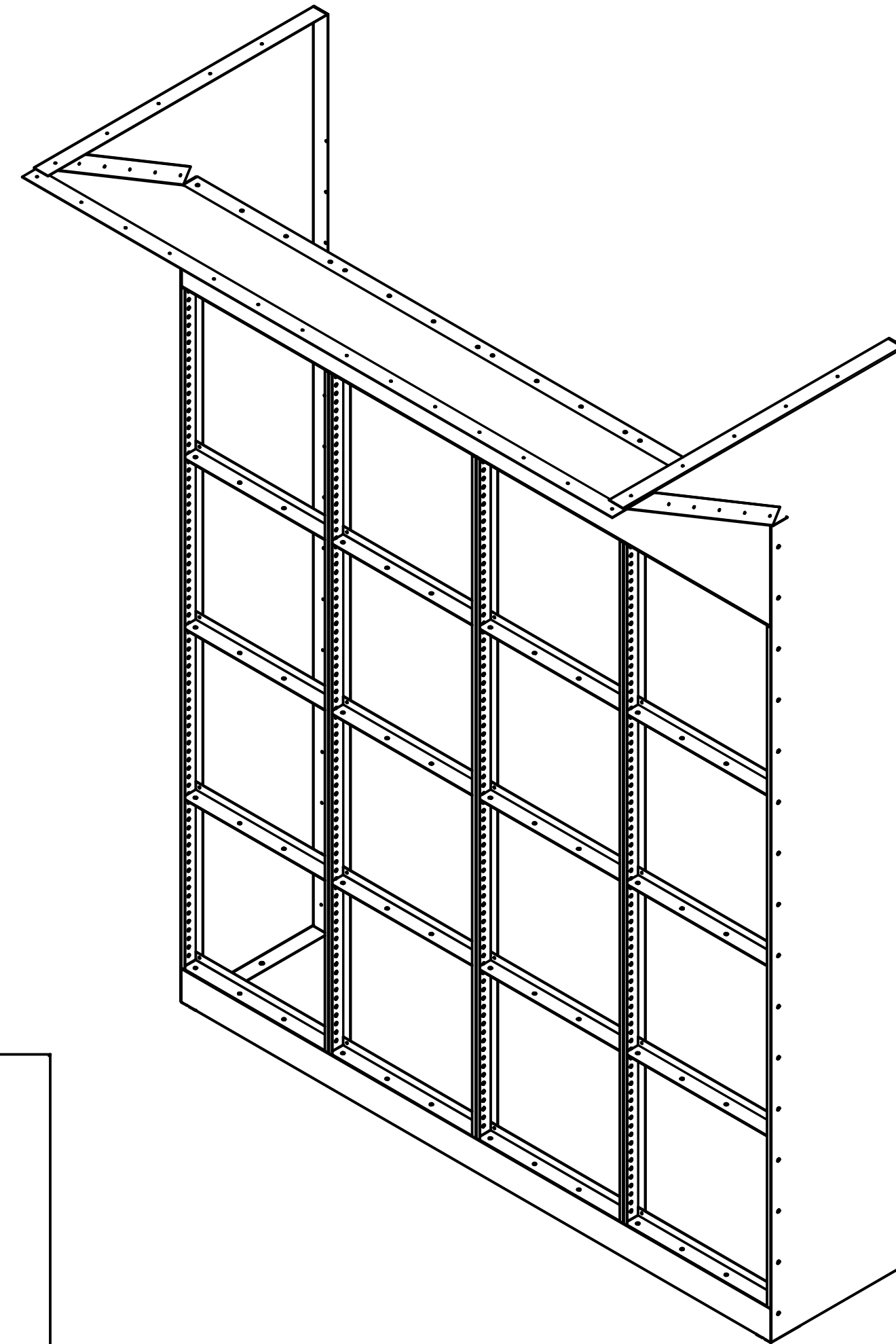
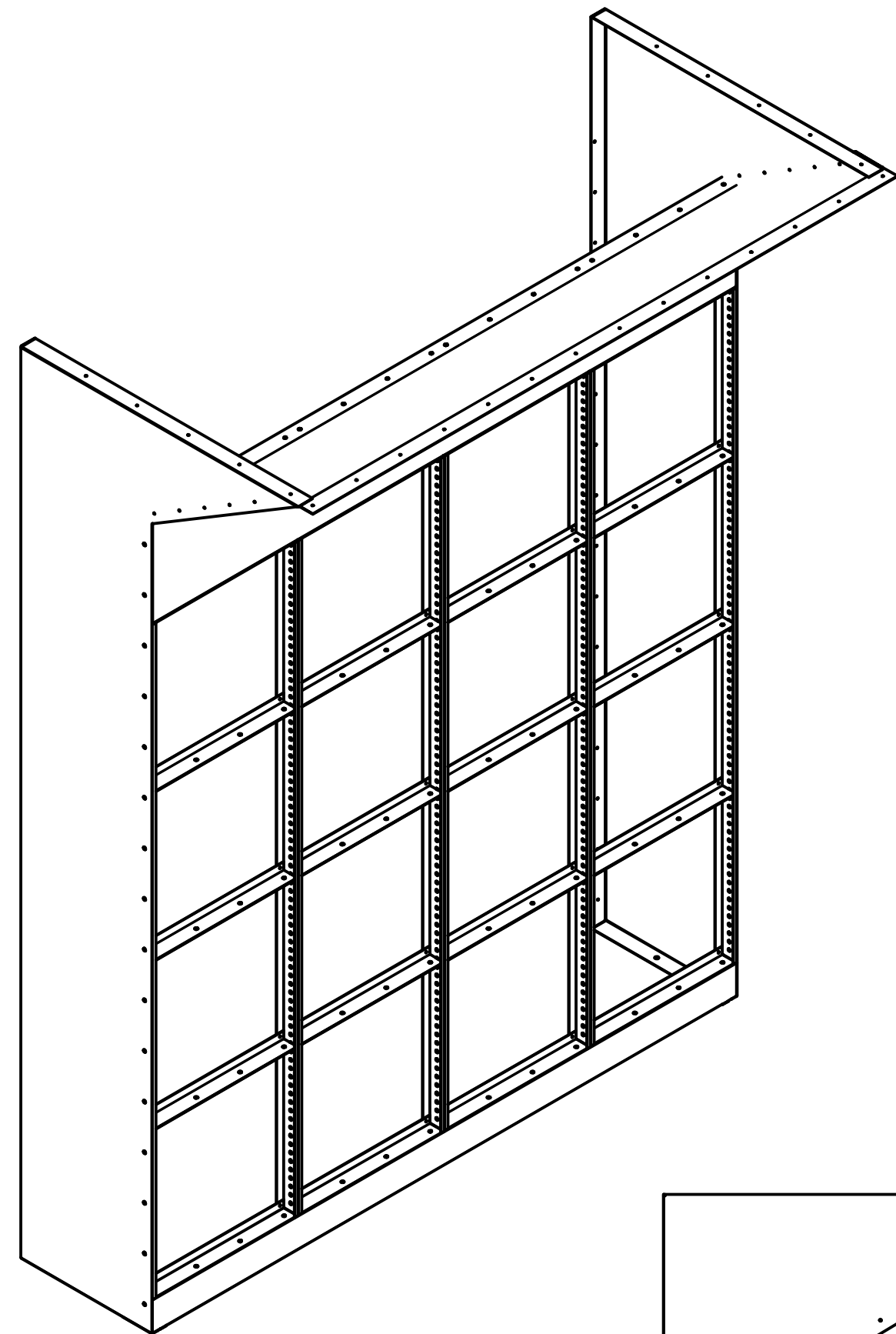
C

B

B

A

A



1'-6"

6'-8"

9'-0"

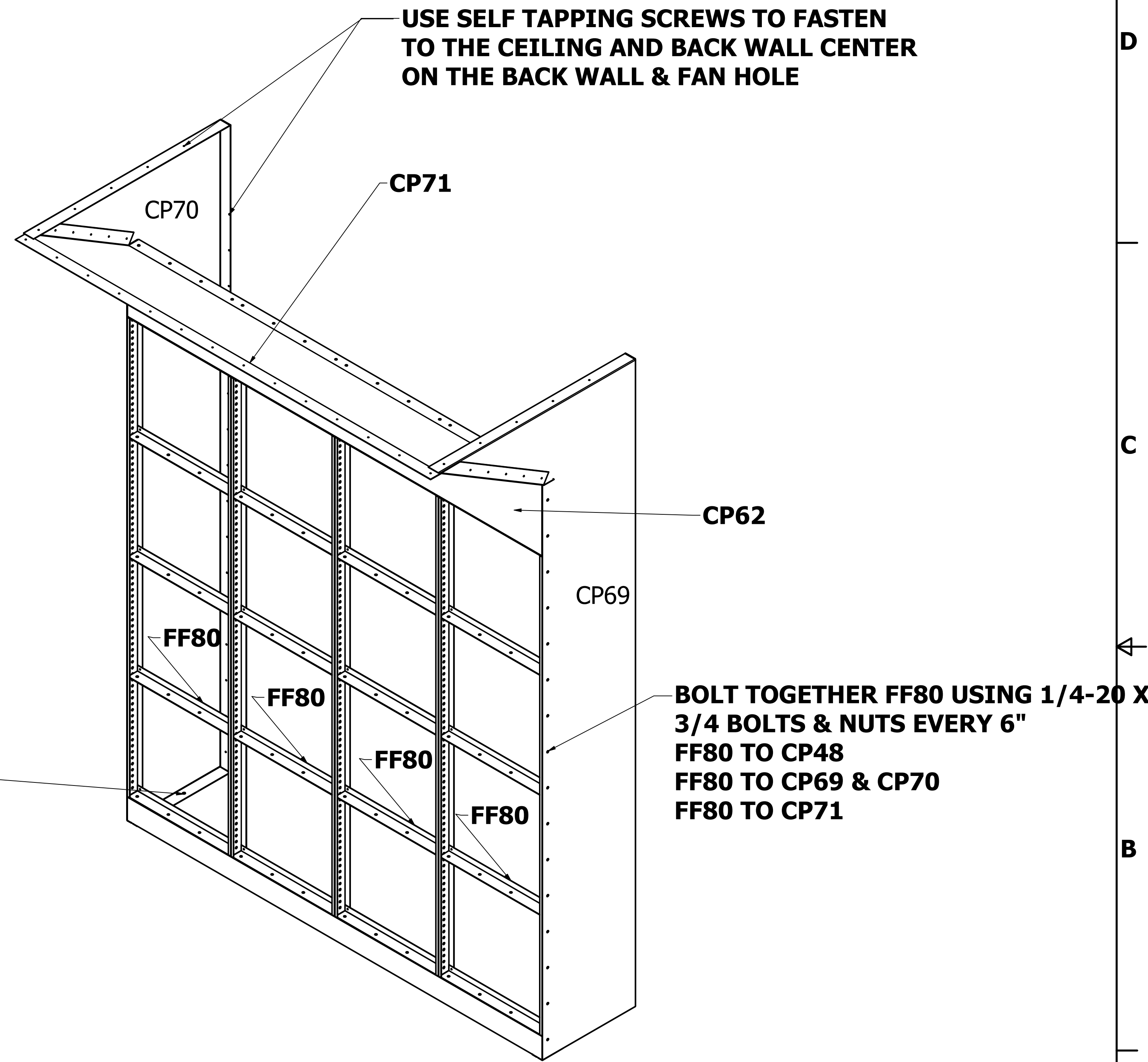


IN COLLABORATION WITH Guffey Systems

DRAWN Emmanuel H	6/2/2022	RGI SPRAY BOOTHS	
CHECKED		TITLE <b>EXHAUST PLENUM FILTER ASSEMBLY 9'H</b>	
QA		SIZE D	DWG NO
MFG		SCAL 0.08	REV
APPROVED		OPEN FACE 16'W X 12'L X 9'H	
		SHEET 5 OF 6	

8 7 6 5 4 3 2 1

PARTS LIST			
ITEM	QTY	PART NUMBER	DESCRIPTION
FF80	4	80 FILTER ASSEMBLY	
CP48	1	PLENUM FILTER FRAME BASE 80 X 4	#1749
CP71	1	PLENUM FILTER FACE PLATE - 80 X 20_FOR 34" FAN	
CP69	1	PLENUM FILTER FRAME SIDE 108 X 40	
CP70	1	PLENUM FILTER FRAME SIDE 108 X 40 LEFT	
CP62	1	FILTER FRAME BX80X12	



IN COLLABORATION WITH Guffey Systems

DRAWN Emmanuel H	6/2/2022	RGI SPRAY BOOTHS	
CHECKED		TITLE	
QA		<b>EXHAUST PLENUM FILTER ASSEMBLY 9'H</b>	
MFG		SIZE	DWG NO
APPROVED		D	OPEN FACE 16'W X 12'L X 9'H
		SCALE	REV
		0.10	
			SHEET 6 OF 6