

## Hand Crank / Spring Retractable Welding Cable Reels Series CEA / WC

- Designed to improve safety in the work area with an increase in efficiency and productivity
- Cable reels have a current path through a continuous 400 or 700 AMP, 90 V DC (maximum) rated enclosed slip ring
- Keeps work area and vehicles better organized, resulting in better space utilization
- Stores cable when not in use, eliminating tangled, kinked welding cables
- Welding cable reels store work lead or electrode lead, up to 4/0, safely and effectively when not in use. Each lead requires a separate reel. When welding also refer to ANSI/Asc Z 49.1
- Maintains proper bend radius of cables, providing longer cable life



WC7000

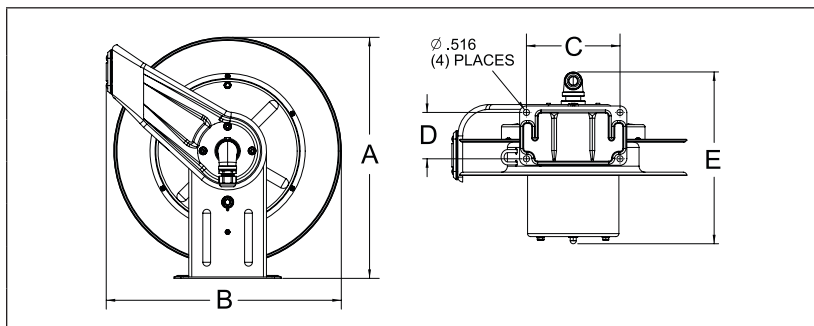


WC80001



**Interactive Reel Catalog**

Visit [reelcraft.com/catalog](http://reelcraft.com/catalog) for complete product specifications, parts, and accessories.



	Size Index					
	1		2		3	
	in	mm	in	mm	in	mm
<b>A</b>	20 <sup>1</sup> / <sub>4</sub>	514	20 <sup>1</sup> / <sub>4</sub>	514	25 <sup>3</sup> / <sub>8</sub>	645
<b>B</b>	19 <sup>3</sup> / <sub>4</sub>	502	19 <sup>3</sup> / <sub>4</sub>	502	24	610
<b>C</b>	7 <sup>7</sup> / <sub>8</sub>	200	7 <sup>7</sup> / <sub>8</sub>	200	10	254
<b>D</b>	3 <sup>7</sup> / <sub>8</sub>	98	3 <sup>7</sup> / <sub>8</sub>	98	6	152
<b>E</b>	13 <sup>1</sup> / <sub>4</sub>	337	14	356	15 <sup>5</sup> / <sub>8</sub>	397

Model without cable & bumper	Cable Size										Amps	Shipping Weight		Size Index #
	#1 (42mm <sup>2</sup> )		1/0 (54mm <sup>2</sup> )		2/0 (67mm <sup>2</sup> )		3/0 (85mm <sup>2</sup> )		4/0 (107mm <sup>2</sup> )			lbs	kg	
	ft	m	ft	m	ft	m	ft	m	ft	m				
<b>WC7000</b>	50	15	50	15	50	15	-----	-----	-----	-----	400	58	26	1
<b>WCH7000</b>	-----	-----	-----	-----	-----	-----	50	15	50	15	700	58	26	2
<b>WC80001</b>	75	23	75	23	75	23	-----	-----	-----	-----	400	102	46	3
<b>WC80002</b>	100	30	-----	-----	-----	-----	-----	-----	-----	-----	400	104	47	3
<b>WCH80001</b>	-----	-----	-----	-----	-----	-----	75	23	75	23	700	102	46	3

\*May exceed maximum cable length allowable for most welding applications. **NOTE:** Each cable requires separate reel.  
\*\*Hand crank reel

**Caution:** If cable reels are to be used for extended periods of time, unwind all cable from reel to prevent heat build-up. **For indoor non-weathertight applications only.**

Cable Size	Bumper
#1	<b>1-HR1004-3A</b>
1/0, 2/0, 3/0	<b>1-HR1004-3</b>
4/0	<b>2-HR1004-3</b>